

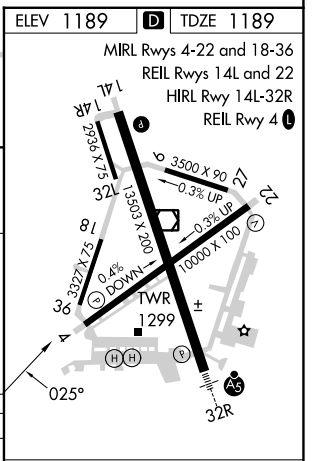
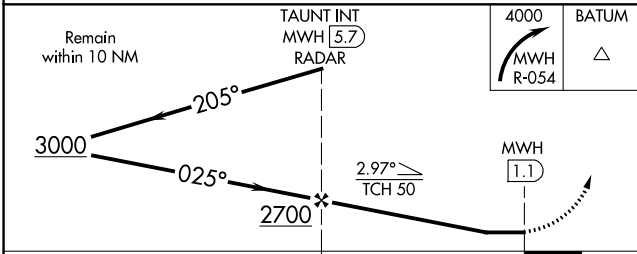
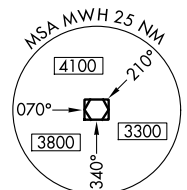
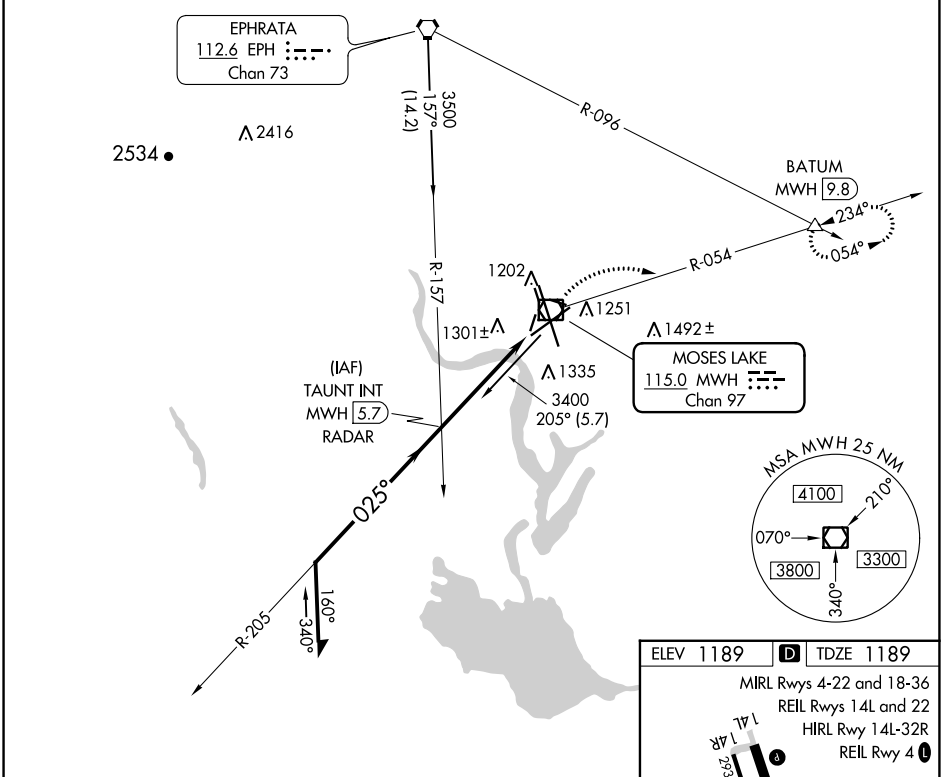
VOR/DME MWH <b>115.0</b> Chan <b>97</b>	APP CRS <b>025°</b>	Rwy ldg <b>10000</b> TDZE <b>1189</b> Apt Elev <b>1189</b>
---	------------------------	--

# VOR RWY 4

GRANT COUNTY INTL (MWH)

**MISSED APPROACH:** Climbing right turn to 4000 via MWH R-054 to BATUM INT/MWH 9.8 DME and hold.

ATIS <b>119.05</b>	GRANT COUNTY APP CON * <b>126.4 379.95</b>	GRANT COUNTY TOWER * <b>118.25 (CTAF) 257.8 (EAST)</b> <b>128.0 257.8 (WEST)</b>	GND CON <b>121.9</b>	UNICOM <b>122.95</b>
-----------------------	---	--	-------------------------	-------------------------



CATEGORY	A	B	C	D
S-4	1620-1 431 (500-1)	1620-1½ 431 (500-1¼)	1620-1½ 431 (500-1½)	1620-1½ 431 (500-1½)
CIRCLING	1680-1 491 (500-1)	1680-1½ 491 (500-1½)	1820-2 631 (700-2)	

FAF to MAP 4.6 NM					
Knots	60	90	120	150	180
Min:Sec	4:36	3:04	2:18	1:50	1:32

NW-1, 22 FEB 2024 to 21 MAR 2024

NW-1, 22 FEB 2024 to 21 MAR 2024