

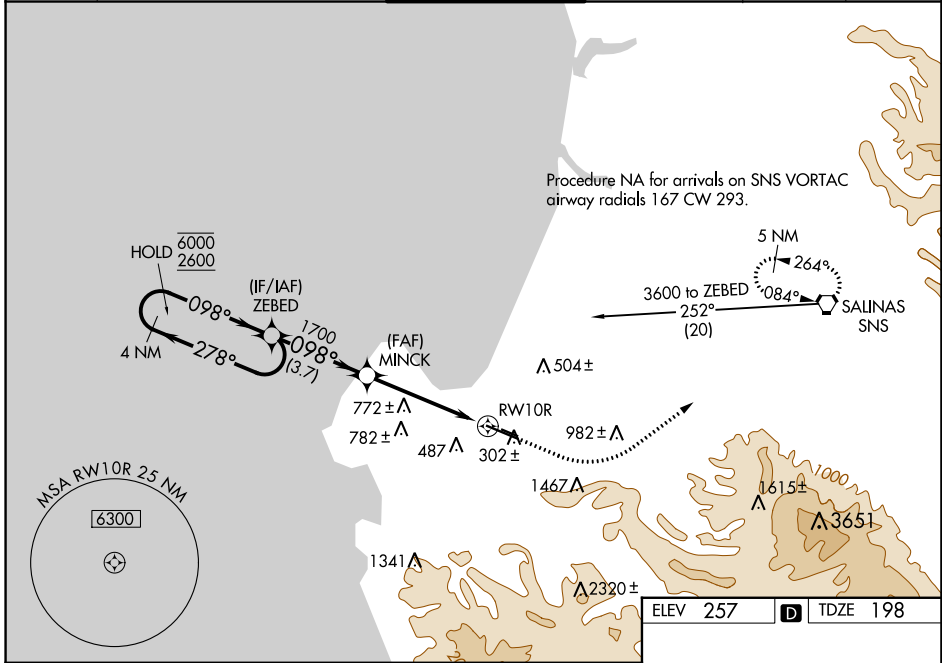
WAAS CH 69602 W10A	APP CRS 098°	Rwy Idg TDZE Apt Elev	7000 198 257
--	------------------------	-----------------------------	---

RNAV (GPS) RWY 10R

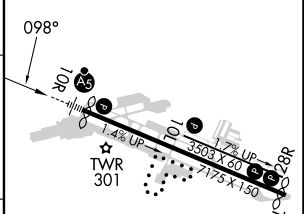
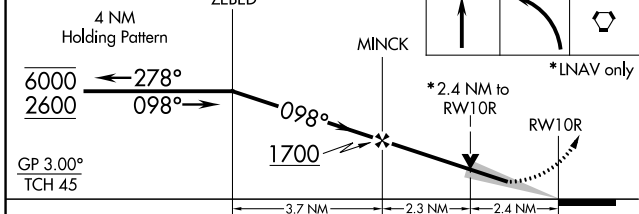
MONTEREY RGNL (MRY)

RNP APCH.	MALSR	MISSED APPROACH: Climb to 1000 then climbing left turn to 5000 direct SNS VORTAC and hold, continue climb-in-hold to 5000.
<p>⚠ Circling NA south of Rwy 10R and 28L. For uncompensated Baro-VNAV systems, LNAV/VNAV NA below 0°C or above 54°C. For inop ALS, increase LPV visibility all Cats to 1 7/8 SM, LNAV/VNAV visibility all Cats and LNAV Cat C/D to 2 1/2 SM.</p>		

ATIS 119.25	NORCAL APP CON 133.0 251.15 (001°-135°) 127.15 307.125 (136°-360°)	MONTEREY TOWER ★ 118.4 (CTAF) 257.8	GND CON 120.875 348.6	CLNC DEL 135.45	UNICOM 122.95
-----------------------	--	--	---------------------------------	---------------------------	-------------------------



ELEV 257	TDZE 198
----------	----------



CATEGORY	A	B	C	D
LPV DA		718-1 1/2	520 (500-1 1/2)	
LNAV/VNAV DA		789-1 3/4	591 (600-1 1/4)	
LNAV MDA	980/24 782 (800-1/2)	980/40 782 (800-3/4)	980-1 3/4	782 (800-1 1/4)
CIRCLING	980-1 723 (800-1)	980-1 1/4 723 (800-1 1/4)	1280-3 1023 (1100-3)	NA

MIRL Rwy 10L-28R

HIRL Rwy 10R-28L

REIL Rwy 28L

REIL Rwy 10L and 28R

SW-2, 22 FEB 2024 to 21 MAR 2024

SW-2, 22 FEB 2024 to 21 MAR 2024