

WAAS CH 48936 W31A	APP CRS 306°	Rwy Idg TDZE Apt Elev	5007 973 975
--	------------------------	-----------------------------	---

RNAV (GPS) RWY 31

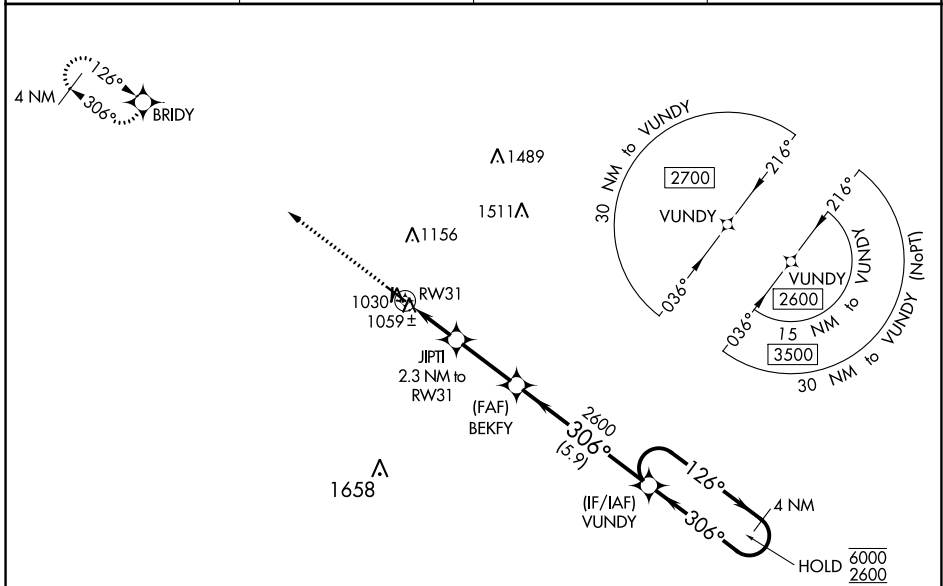
MARSHALLTOWN MUNI (MIW)

RNP APCH.

▼ Baro-VNAV and VDP NA when using Grinnell altimeter setting. Rwy 31 Helicopter visibility reduction below 3/4 SM NA. For uncompensated Baro-VNAV systems, LNAV/VNAV NA below -22°C or above 54°C. When local altimeter setting not received, use Grinnell altimeter setting and increase all DA 64 feet and all MDA 80 feet; increase LPV and LNAV/VNAV all Cats visibility 1/8 SM and LNAV Cats C/D and Circling Cat D visibility 1/4 SM. Circling Rwy 18, 36 NA at night.

▲ MISSED APPROACH: Climb to 2700 direct BRIDY and hold.

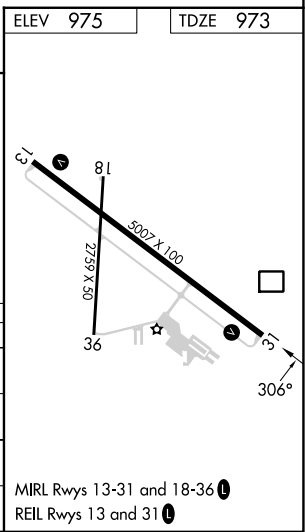
ASOS 128.325	WATERLOO APP CON * 120.9	CLNC DEL 120.9	UNICOM 122.8 (CTAF) 0
------------------------	------------------------------------	--------------------------	---------------------------------



NC-3, 22 FEB 2024 to 21 MAR 2024

NC-3, 22 FEB 2024 to 21 MAR 2024

ELEV 975	TDZE 973			
2700 BRIDY				
*LNAV only				
*1 NM to RW31				
JIPTI 2.3 NM to RW31				
BEKFY 2600	VUNDY 4 NM Holding Pattern			
1740*	6000 126°			
	2600 306°			
	GP 3.00° TCH 37			
	1 NM, 1.3 NM, 2.7 NM, 5.9 NM			
CATEGORY	A	B	C	D
LPV DA		1223-1	250 (300-1)	
LNAV/VNAV DA		1223-1	250 (300-1)	
LNAV MDA		1320-1	347 (400-1)	
CIRCLING	1400-1 425 (500-1)	1440-1 465 (500-1)	1460-1½ 485 (500-1½)	1840-2¾ 865 (900-2¾)



MIRL Rwy 13-31 and 18-36 0
REIL Rwy 13 and 31 0