

WAAS CH 63212 W18B	APP CRS 185°	Rwy Idg 12004 TDZE 94 Apt Elev 96
--	------------------------	--

RNAV (GPS) RWY 18R

ORLANDO INTL (MCO)

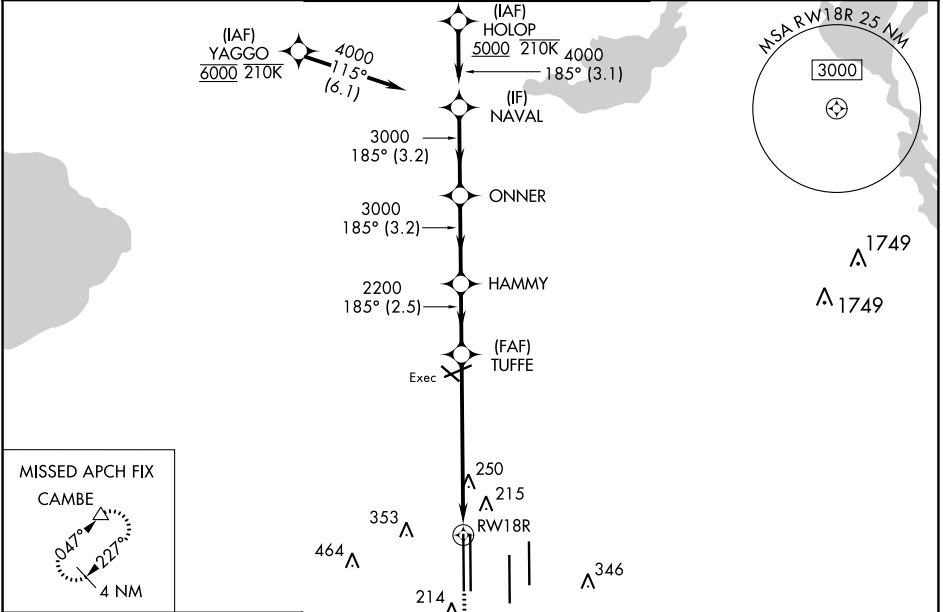
RNP APCH - GPS.

▼ LNAV procedure NA during simultaneous operations. Use of FD or AP required during simultaneous operations. Simultaneous approach authorized. For uncompensated Baro-VNAV systems, LNAV/VNAV NA below 1°C or above 54°C.

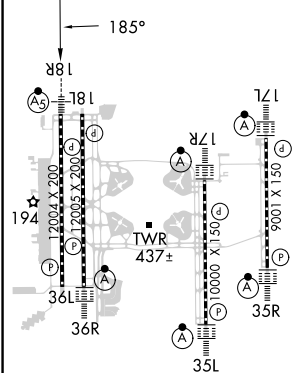


MISSED APPROACH: Climb to 500 then climbing right turn to 4000 direct CAMBE and hold, continue climb-in-hold to 4000.

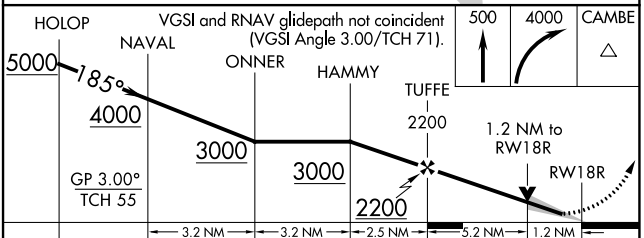
D-ATIS ARR 121.25 DEP 120.525	ORLANDO APP CON 124.8 307.0	ORLANDO TOWER 118.45 253.5 (Rwys 17L-35R, 17R-35L) 124.3 253.5 (Rwys 18L-36R, 18R-36L)	GND CON 126.4 (East) 121.8 (West)	CLNC DEL 134.7 341.7	CPDLC
---	---------------------------------------	--	---	--	-------



ELEV 96	D	TDZE 94
----------------	----------	----------------



HIRL all Rwys
REIL Rwy 36L
TDZ/CL Rwys 17L/R, 18R, 35L/R and 36R



CATEGORY	A	B	C	D
LPV DA	294/18		200 (200-½)	
LNAV/VNAV DA	390/24		296 (300-½)	
LNAV MDA	540/24 446 (500-½)		540/45 446 (500-¾)	
C CIRCLING	740-1 644 (700-1)		740-1¾ 644 (700-1¾) 740-2 644 (700-2)	

SE-3, 22 FEB 2024 to 21 MAR 2024

SE-3, 22 FEB 2024 to 21 MAR 2024