

SAGINAW, MICHIGAN

AL-648 (FAA)

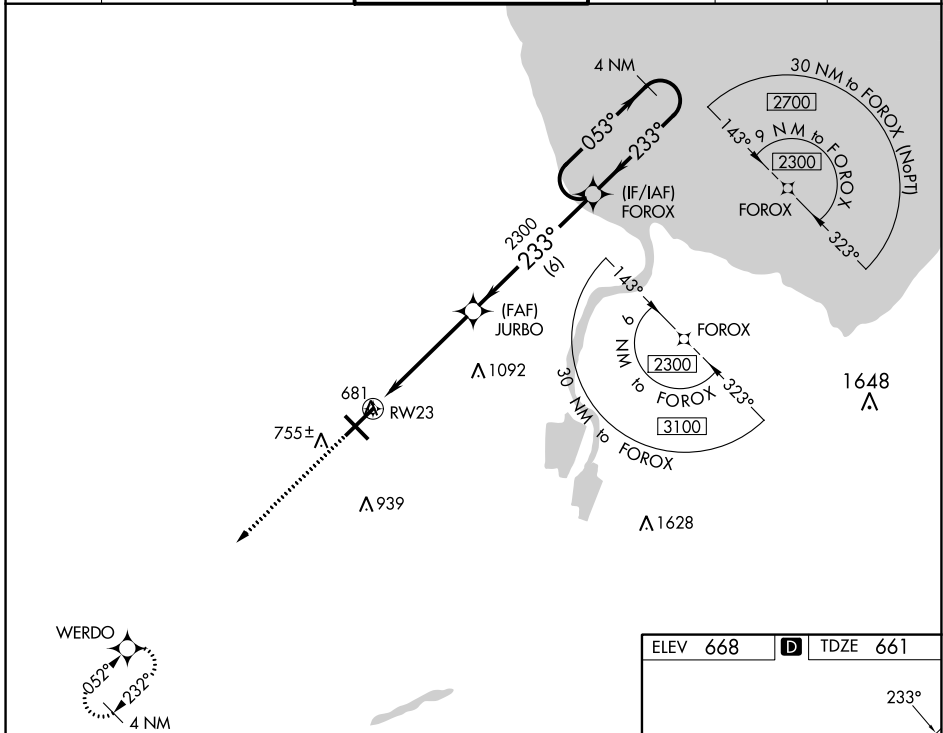
22363

| | | | |
|--|------------------------|-----------------------------|---|
| WAAS CH 49010 W23A | APP CRS 233° | Rwy Idg TDZE Apt Elev | 8002 661 668 |
|--|------------------------|-----------------------------|---|

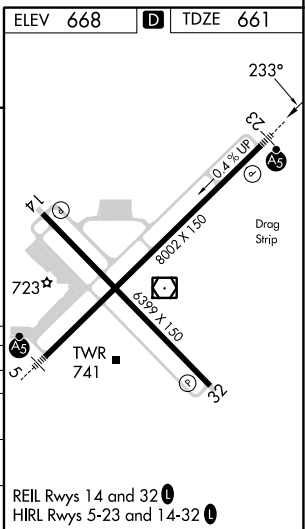
RNAV (GPS) RWY 23

MBS INTL (MBS)

| | | | | | |
|--|--|--|--|---------------------------|-------------------------|
| <p>▽ For uncompensated Baro-VNAV systems, LNAV/VNAV NA below -18°C (0°F) or above 54°C (130°F). DME/DME RNP-0.3 NA. For inoperative ALS, increase LNAV/VNAV all Cats visibility to RVR 4500. # RVR 1800 authorized with use of FD or AP or HUD to DA.</p> | | <p>MALSR AS</p> | <p>MISSED APPROACH: Climb to 2300 direct WERDO and hold.</p> | | |
| ATIS 125.925 | GREAT LAKES APP CON * 126.45 235.625 | SAGINAW TOWER * 120.1 (CTAF) 257.7 | GND CON 121.7 | CLNC DEL 121.85 | UNICOM 122.95 |



| | | | | |
|--------------|-----------------------|-----------------------|-------------------------|-----------------------|
| 2300 | WERDO | JURBO | FOROX | 4 NM Holding Pattern |
| *LNAV only | *1.1 NM to RW23 | 2300 | 233° | 053° → 2300 |
| | | | ← 233° | GP 3.00° TCH 54 |
| | 1.1 | 3.9 NM | 6 NM | |
| CATEGORY | A | B | C | D |
| LPV DA # | | 861/24 | 200 (200-½) | |
| LNAV/VNAV DA | | 940/24 | 279 (300-½) | |
| LNAV MDA | 1060/24 | 399 (400-½) | 1060/35 | 399 (400-¾) |
| CIRCLING | 1080-1 412 (500-1) | 1120-1 452 (500-1) | 1240-1½ 572 (600-1½) | 1240-2 572 (600-2) |



EC-1, 22 FEB 2024 to 21 MAR 2024

EC-1, 22 FEB 2024 to 21 MAR 2024

SAGINAW, MICHIGAN
Amdt 2 01FEB18

43°32'N - 84°05'W

RNAV (GPS) RWY 23

MBS INTL (MBS)