

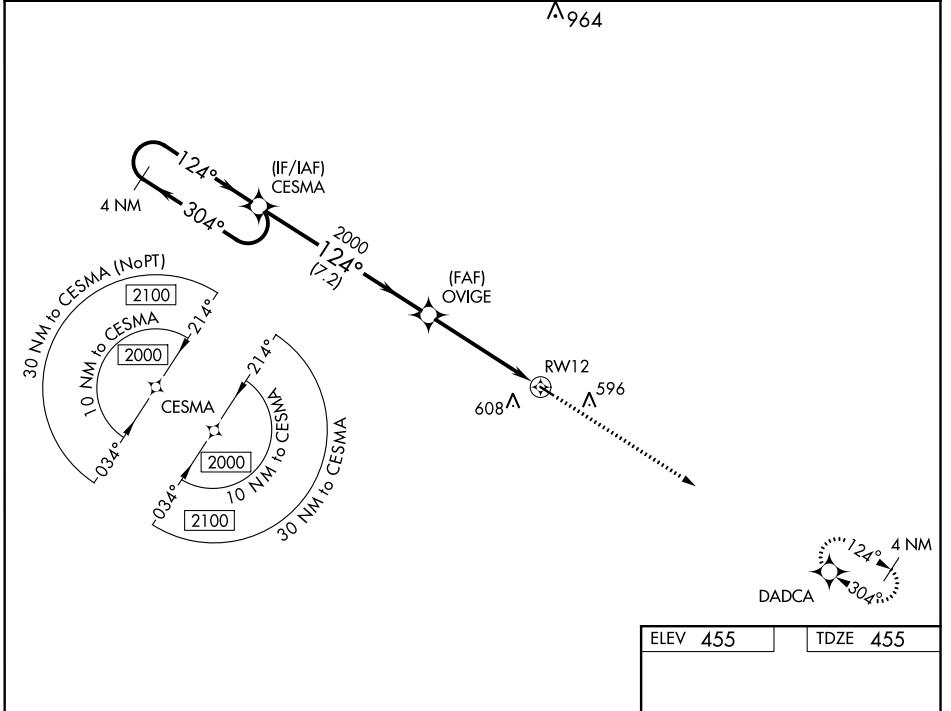
WAAS CH 90408 W12A	APP CRS 124°	Rwy Idg TDZE 455 Apt Elev 455
--	------------------------	---

RNAV (GPS) RWY 12

PRENTISS-JEFFERSON DAVIS COUNTY (M43)

RNP APCH.	<p>▼ Baro-VNAV NA. Use Brookhaven altimeter setting; when not received, use Hattiesburg/Laurel altimeter setting and increase all DA 27 feet and all MDA 40 feet and increase LPV and LNAV/VNAV all Cats visibility 1/8 mile. Rwy 12 helicopter visibility reduction below 3/4 SM NA.</p> <p>▲ NA</p>	<p>MISSED APPROACH: Climb to 2000 direct DADCA and hold.</p>
-----------	---	--

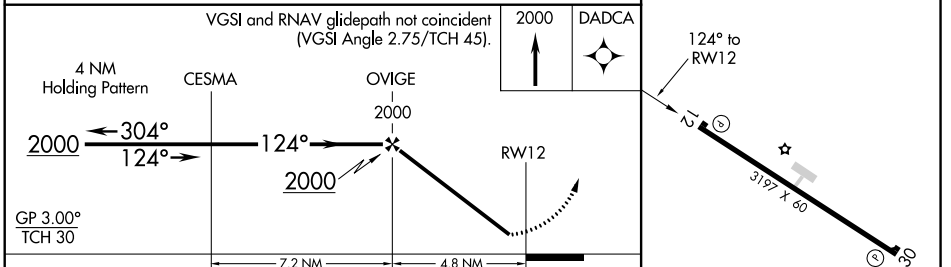
1R7 AWOS-3P 118.125	HOUSTON CENTER 126.8 327.8	UNICOM 122.8 (CTAF) 0
-------------------------------	--------------------------------------	---------------------------------



SC-4, 22 FEB 2024 to 21 MAR 2024

SC-4, 22 FEB 2024 to 21 MAR 2024

ELEV 455	TDZE 455
----------	----------



CATEGORY	A	B	C	D
LPV DA	770-1 1/8	315 (400-1 1/8)		NA
LNAV/VNAV DA	959-1 3/4	504 (600-1 3/4)		NA
LNAV MDA	1020-1	565 (600-1)		NA
CIRCLING	1080-1	625 (700-1)		NA

MIRL Rwy 12-30 0

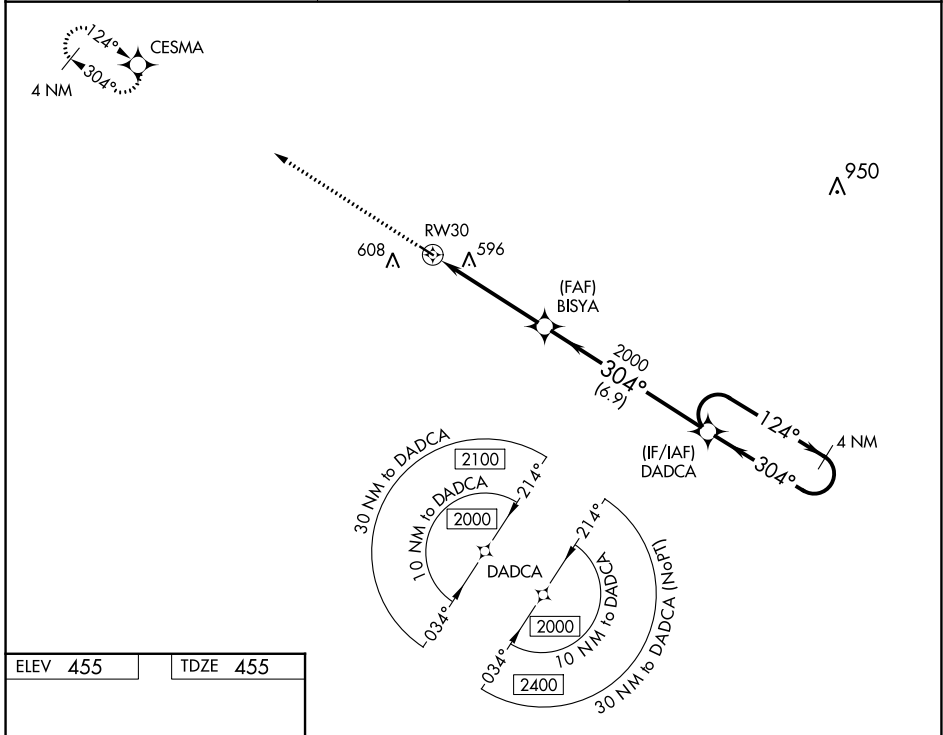
RNAV (GPS) RWY 12

WAAS CH 61208 W30A	APP CRS 304°	Rwy Idg 3197 TDZE 455 Apt Elev 455
--	------------------------	---

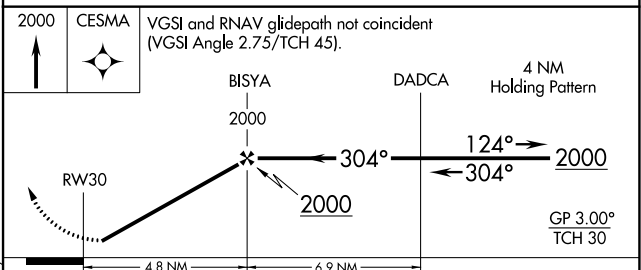
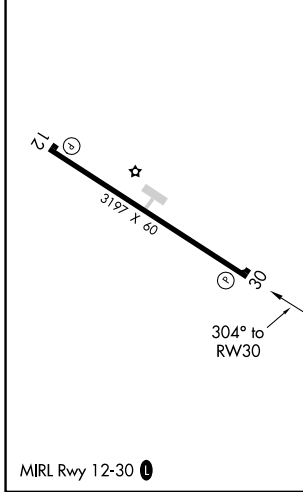
RNAV (GPS) RWY 30

PRENTISS-JEFFERSON DAVIS COUNTY (M43)

<p>▼ Baro-VNAV NA, DME/DME RNP-0.3 NA. Use Brookhaven altimeter setting; when not received, use Hattiesburg/Laurel altimeter setting and increase all DA 27 feet and all MDA 40 feet. Helicopter visibility reduction below $\frac{3}{4}$ SM NA.</p> <p>▲ NA</p>	<p>1R7 AWOS-3P 118.125</p>	<p>HOUSTON CENTER 126.8 327.8</p>	<p>UNICOM 122.8 (CTAF) 0</p>
---	---------------------------------------	--	---



ELEV 455	TDZE 455
-----------------	-----------------



CATEGORY	A	B	C	D
LPV DA	770-1 $\frac{1}{8}$	315 (400-1 $\frac{1}{8}$)		NA
LNNAV/VNAV DA	797-1 $\frac{1}{4}$	342 (400-1 $\frac{1}{4}$)		NA
LNNAV MDA	980-1	525 (600-1)		NA
☑ CIRCLING	1020-1 565 (600-1)	1080-1 625 (700-1)		NA

SC-4, 22 FEB 2024 to 21 MAR 2024

SC-4, 22 FEB 2024 to 21 MAR 2024