

WAAS CH 63238 W36A	APP CRS 001°	Rwy Idg 3202 TDZE 551 Apt Elev 551
--	------------------------	---

RNAV (GPS) RWY 36
HOLLY SPRINGS-MARSHALL COUNTY (M41)

RNP APCH-GPS.

▼ Baro-VNAV NA. Helicopter visibility reduction below 3/4 SM NA.
▲ NA Use Olive Branch altimeter setting; when not received, use Oxford altimeter setting and increase LPV DA to 873, LNAV/VNAV DA to 883 and all MDA 20 feet; increase LPV all Cats and LNAV Cat C visibility 1/8 mile.

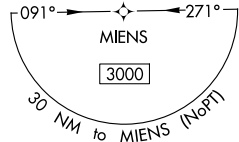
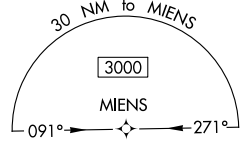
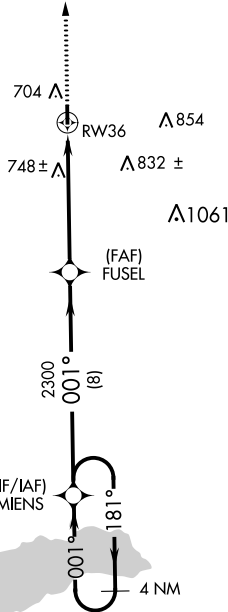
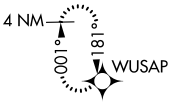
MISSED APPROACH: Climb to 3000 direct WUSAP and hold.

OLV AWOS-3
119.925

MEMPHIS APP CON
125.8 338.3

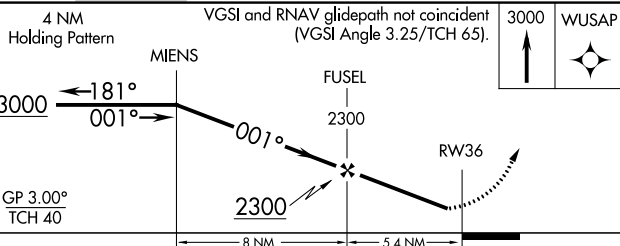
UNICOM
122.8 (CTAF)

MISSED APCH FIX



SC-4, 22 FEB 2024 to 21 MAR 2024

SC-4, 22 FEB 2024 to 21 MAR 2024



CATEGORY	A	B	C	D
LPV DA	861-1	310 (400-1)		NA
LNAV/VNAV DA	871-1 1/8	320 (400-1 1/8)		NA
LNAV MDA	1060-1	509 (600-1)	1060-1 3/8 509 (600-1 3/8)	NA
C CIRCLING	1080-1 529 (600-1)	1100-1 549 (600-1)	1260-2 709 (800-2)	NA

