

APP CRS	Rwy Idg	3000
180°	TDZE	137
	Apt Elev	137

RNAV (GPS) RWY 18

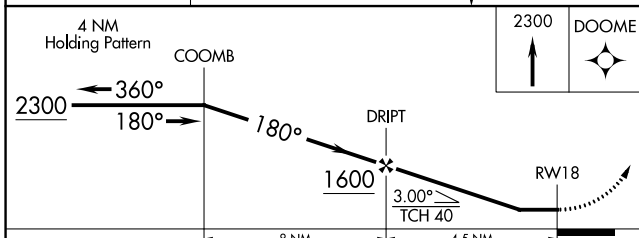
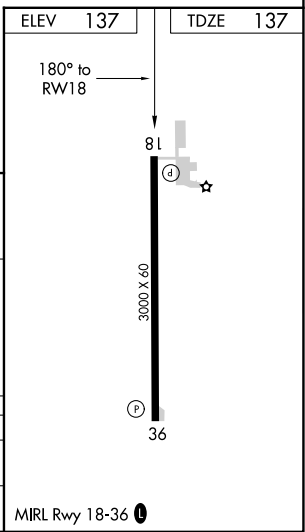
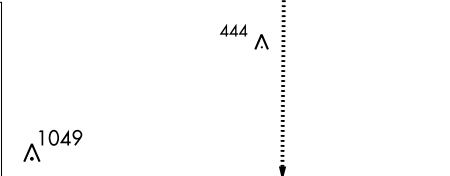
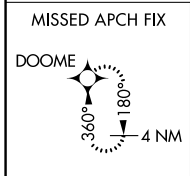
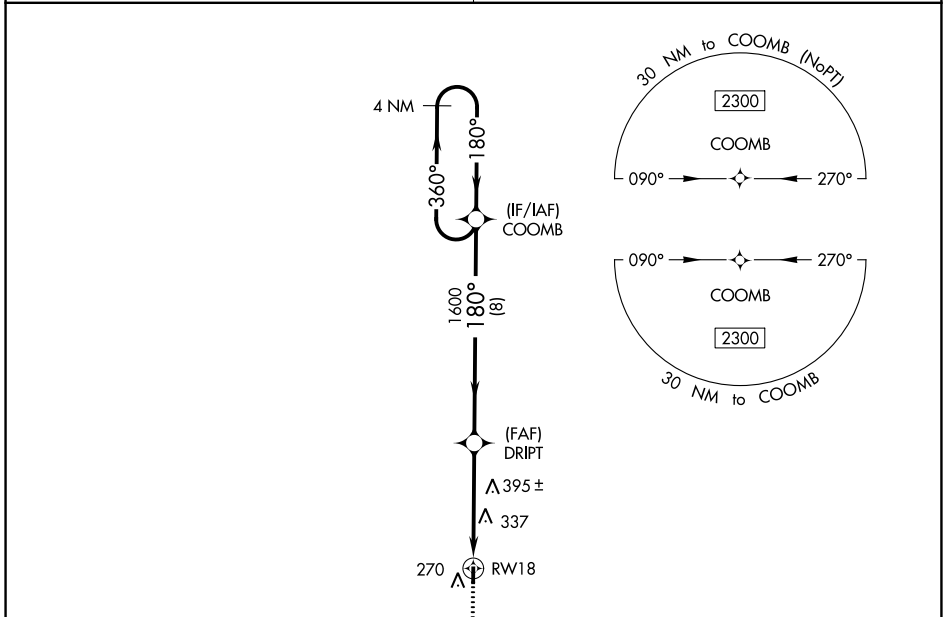
RULEVILLE-DREW (M37)

▽ DME/DME RNP-0.3 NA. Use Cleveland altimeter setting; when not received, use Greenwood altimeter setting and increase all MDA 40 feet and increase LNAV and Circling Cat C visibility ¼ mile. Procedure NA at night. Helicopter visibility reduction below 1 SM NA.

△ NA

MISSED APPROACH: Climb to 2300 direct DOOME and hold.

MEMPHIS CENTER 135.875 269.35	CTAF 122.9
---	----------------------



CATEGORY	A	B	C	D
LNAV MDA	680-1	543 (600-1)	680-1 3/8 543 (600-1 3/8)	NA
C CIRCLING	680-1 543 (600-1)	720-1 583 (600-1)	780-1 3/4 643 (700-1 3/4)	NA

SC-4, 22 FEB 2024 to 21 MAR 2024

SC-4, 22 FEB 2024 to 21 MAR 2024

APP CRS	Rwy Idg	3000
360°	TDZE	137
	Apt Elev	137

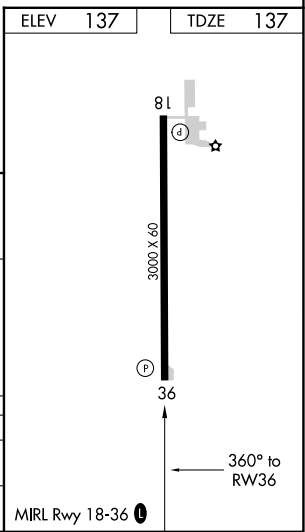
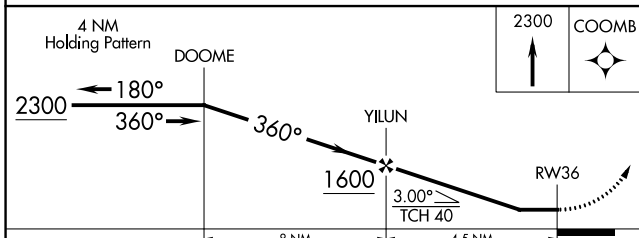
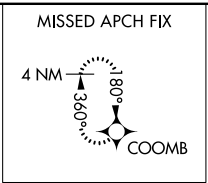
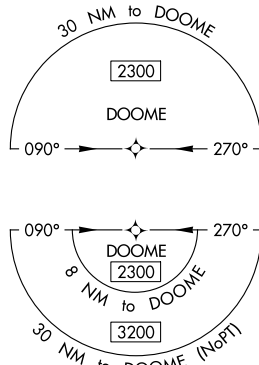
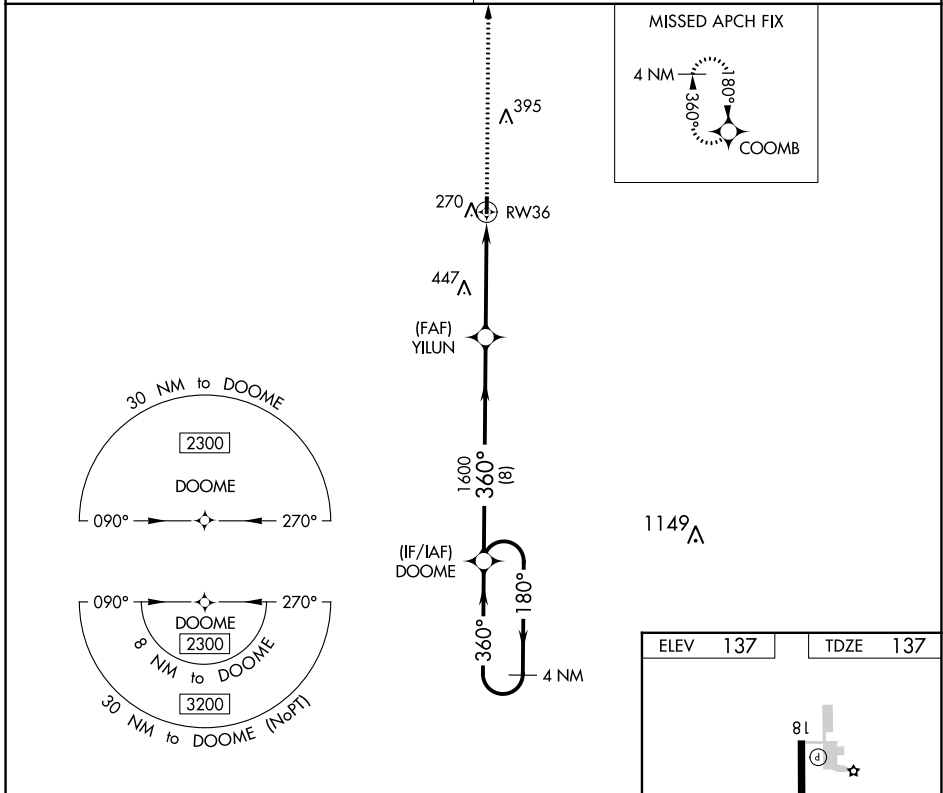
RNAV (GPS) RWY 36

RULEVILLE-DREW (M37)

NA DME/DME RNP-0.3 NA. Use Cleveland altimeter setting; when not received, use Greenwood altimeter setting and increase all MDA 40 feet; increase LNAV Cat C visibility 1/8 mile and Circling Cat C visibility 1/4 mile. Procedure NA at night. Helicopter visibility reduction below 1 SM NA.

MISSED APPROACH: Climb to 2300 direct COOMB and hold.

MEMPHIS CENTER **135.875 269.35** CTAF **122.9**



CATEGORY	A	B	C	D
LNAV MDA	620-1	483 (500-1)	620-1 3/8 483 (500-1 3/8)	NA
C CIRCLING	620-1 483 (500-1)	720-1 583 (600-1)	780-1 3/4 643 (700-1 3/4)	NA

SC-4, 22 FEB 2024 to 21 MAR 2024

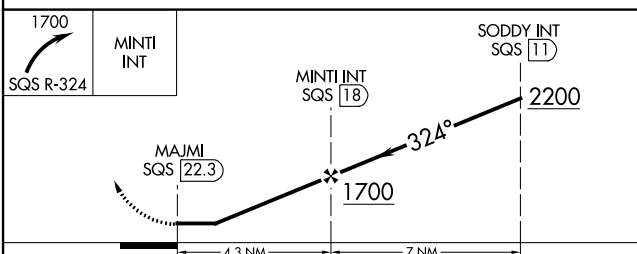
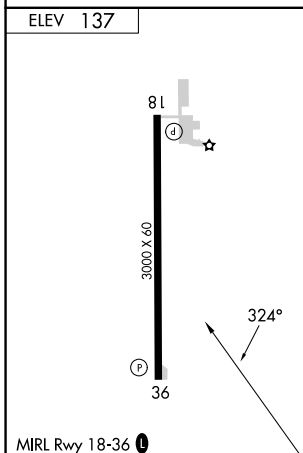
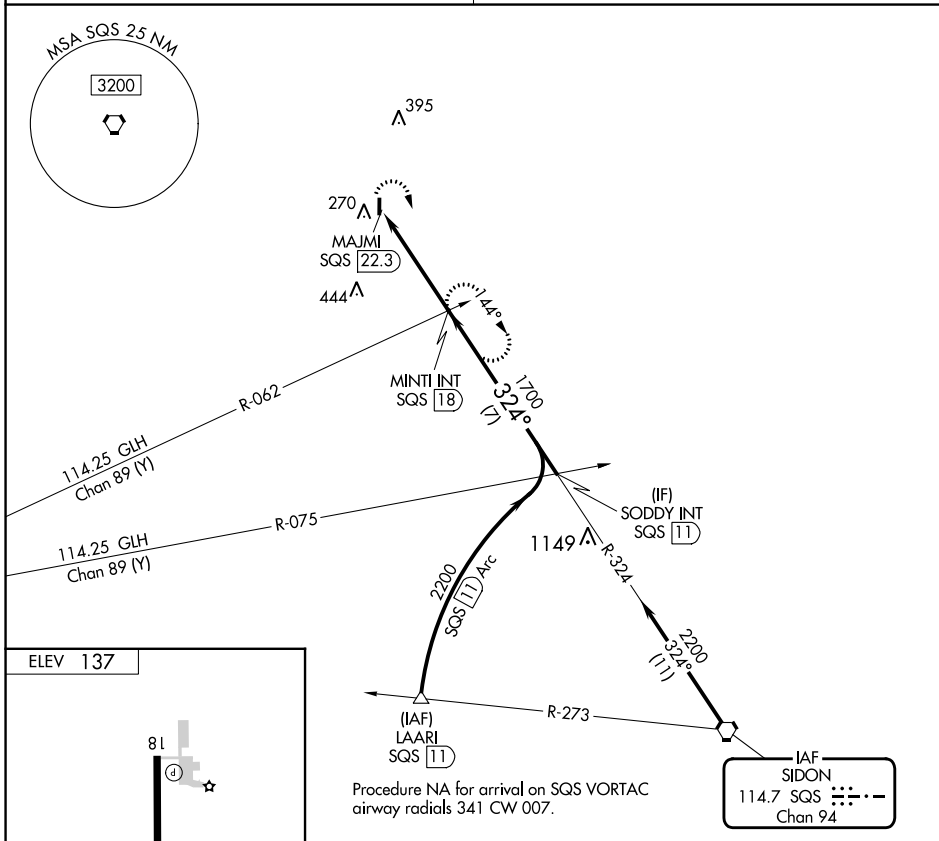
SC-4, 22 FEB 2024 to 21 MAR 2024

VORTAC SQS 114.7 Chan 94	APP CRS 324°	Rwy Idg TDZE Apt Elev	N/A N/A 137
--	------------------------	-----------------------------	--

VOR-A
RULEVILLE-DREW (M37)

▼ Rwy 18 and 36 helicopter visibility reduction below 1 SM NA. Use Cleveland altimeter setting; when not received, use Greenwood altimeter setting and increase all MDAs 40 feet, increase Cat C visibility 1/4 SM. Procedure NA at night.
▲ NA MISSED APPROACH: Climbing right turn to 1700 on SQS VORTAC R-324 to MINTI INT/SQS 18 DME and hold.

MEMPHIS CENTER 135.875 269.35	CTAF 122.9
---	----------------------



FAF to MAP 4.3 NM					
Knots	60	90	120	150	180
Min:Sec	4:18	2:52	2:09	1:43	1:26
☑ CIRCLING	A 620-1 483 (500-1)	B 720-1 583 (600-1)	C 780-1 ³ / ₄ 643 (700-1 ³ / ₄)	D NA	

SC-4, 22 FEB 2024 to 21 MAR 2024

SC-4, 22 FEB 2024 to 21 MAR 2024