

WAAS CH 69542 W02A	APP CRS 023°	Rwy Idg 3800 TDZE 770 Apt Elev 782
--	------------------------	---

RNAV (GPS) RWY 2

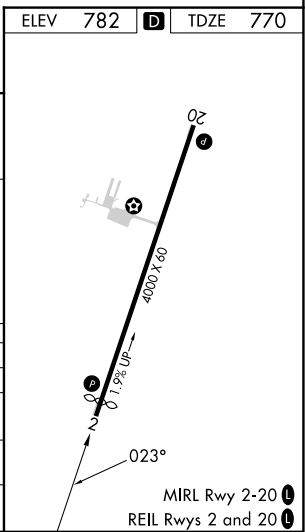
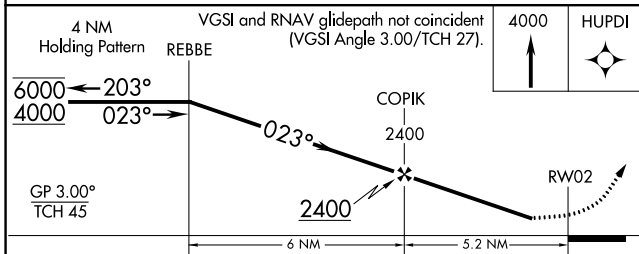
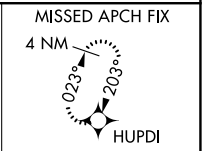
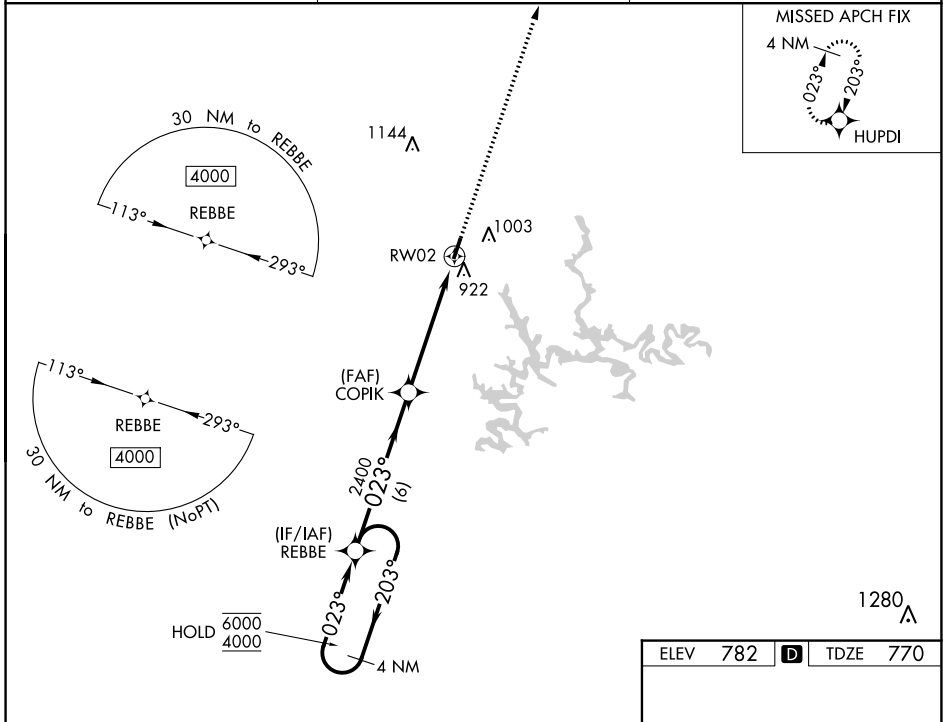
LEITCHFIELD-GRAYSON COUNTY (M20)

RNP APCH.

NA Circling Rwy 20 NA at night. Rwy 2 helicopter visibility reduction below 3/4 SM NA. Baro-VNAV NA. Use Elizabethtown altimeter setting.

MISSED APPROACH: Climb to 4000 direct HUPDI and hold, continue climb-in-hold to 4000.

EKW AWOS-3 121.025	INDIANAPOLIS CENTER 121.175 353.65	UNICOM 123.0 (CTAF) 0
------------------------------	--	---------------------------------



CATEGORY	A	B	C	D
LPV DA	1140-1	370 (400-1)		NA
LNAV/VNAV DA	1308-1½	538 (600-1½)		NA
LNAV MDA	1240-1	470 (500-1)	1240-1¾ 470 (500-1¾)	NA
C CIRCLING	1380-1	598 (600-1)	1380-1½ 598 (600-1½)	NA

SE-1, 22 FEB 2024 to 21 MAR 2024

SE-1, 22 FEB 2024 to 21 MAR 2024

WAAS CH 72942 W20A	APP CRS 203°	Rwy Idg 4000 TDZE 782 Apt Elev 782
--	------------------------	---

RNAV (GPS) RWY 20

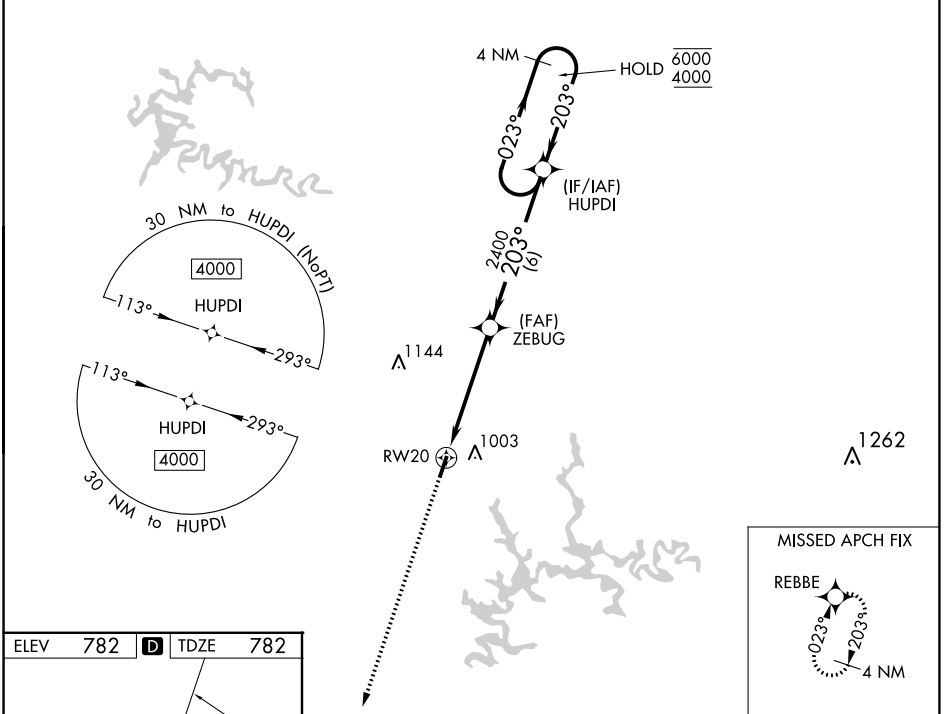
LEITCHFIELD-GRAYSON COUNTY (M20)

RNP APCH.

▼ Rwy 20 helicopter visibility reduction below 1 SM NA.
 ▲NA Baro-VNAV NA. Use Elizabethtown altimeter setting.
 Straight-in Rwy 20 NA at night, Circling Rwy 20 NA at night.

MISSED APPROACH: Climb to 4000 direct REBBE and hold, continue climb-in-hold to 4000.

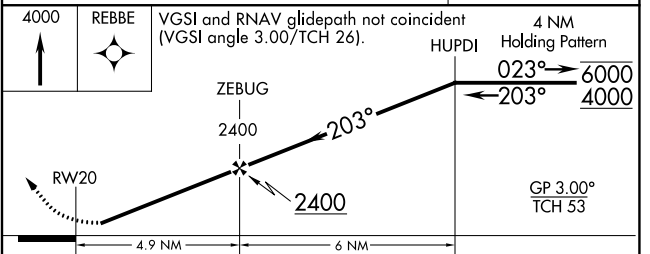
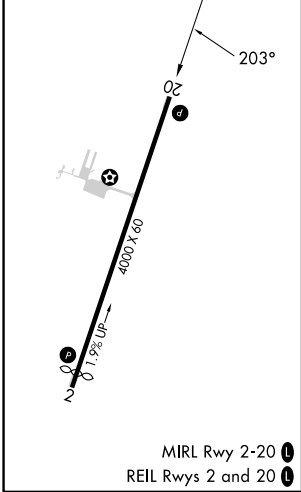
EKX AWOS-3 121.025	INDIANIAPOLIS CENTER 121.175 353.65	UNICOM 123.0 (CTAF) 1
------------------------------	---	---------------------------------



SE-1, 22 FEB 2024 to 21 MAR 2024

SE-1, 22 FEB 2024 to 21 MAR 2024

ELEV 782	D	TDZE 782
----------	----------	----------



CATEGORY	A	B	C	D
LPV DA	1088-1		306 (400-1)	NA
LNAV/VNAV DA	1145-1		363 (400-1)	NA
LNAV MDA	1320-1	538 (600-1)	1320-1½ 538 (600-1½)	NA
C CIRCLING	1380-1	598 (600-1)	1380-1½ 598 (600-1½)	NA