

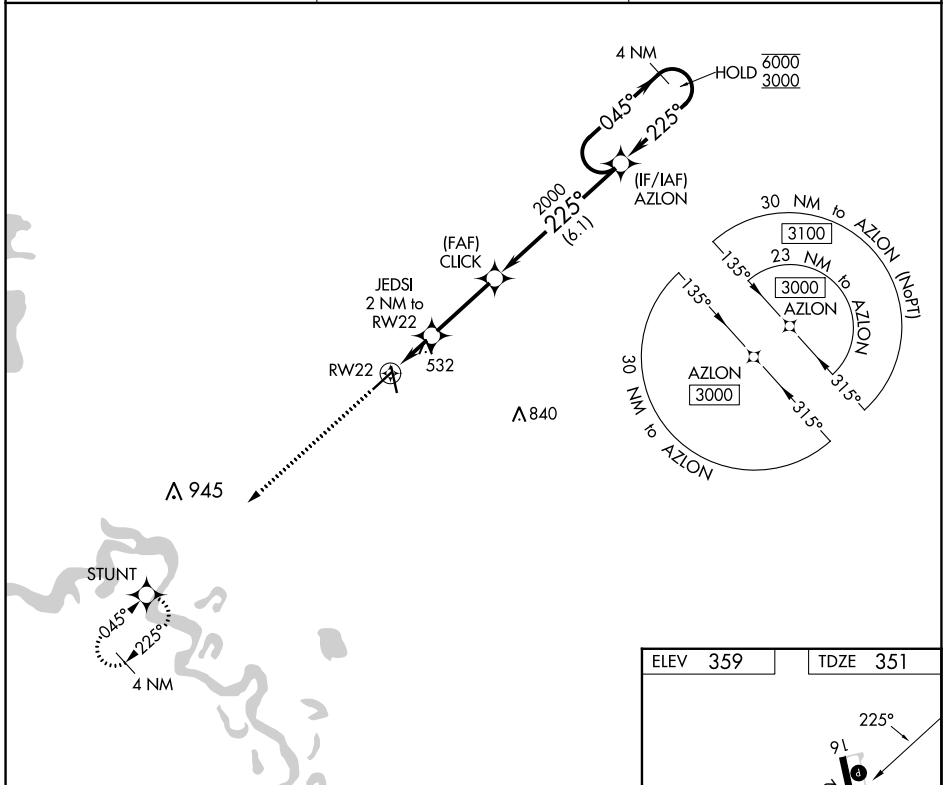
APP CRS	Rwy Idg	4957
225°	TDZE	351
	Apt Elev	359

RNAV (GPS) RWY 22

HOPE MUNI (M18)

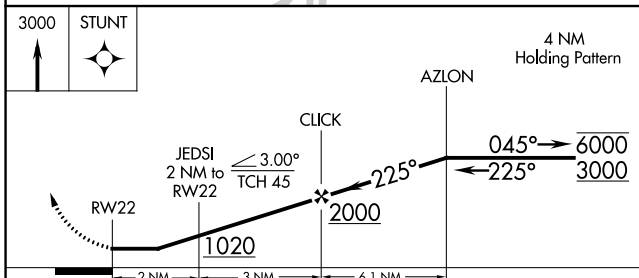
RNP APCH - GPS	Procedure NA at night. Rwy 22 helicopter visibility reduction below 1 SM NA. Use Texarkana altimeter setting.	MISSED APPROACH: Climb to 3000 direct STUNT and hold.
----------------	---	---

TXK ASOS 120.2	FORT WORTH CENTER 123.925 269.475	UNICOM 122.8 (CTAF) ①
--------------------------	---	---------------------------------



SC-1, 22 FEB 2024 to 21 MAR 2024

SC-1, 22 FEB 2024 to 21 MAR 2024



ELEV 359	TDZE 351
----------	----------

This diagram shows the 4 NM holding pattern at AZLON. The holding pattern is a racetrack with a 045° outbound and 225° inbound. The altitude is 3000 ft. The distance from the holding pattern to RWY 22 is 2 NM. The runway is 5301 x 100 ft with a 0.43% up-slope. A 3000 ft altitude is maintained until the 2 NM point, then a 3.00° descent to 1020 ft is required. The runway is 5301 x 100 ft with a 0.43% up-slope.

CATEGORY	A	B	C	D
LNAV MDA	900-1	549 (600-1)	900-1½	549 (600-1½)
C CIRCLING	900-1 541 (600-1)	940-1 581 (600-1)	940-1½ 581 (600-1½)	1100-2½ 741 (800-2½)

MIRL Rwy 16-34 ①
REIL Rwy 16 and 34