

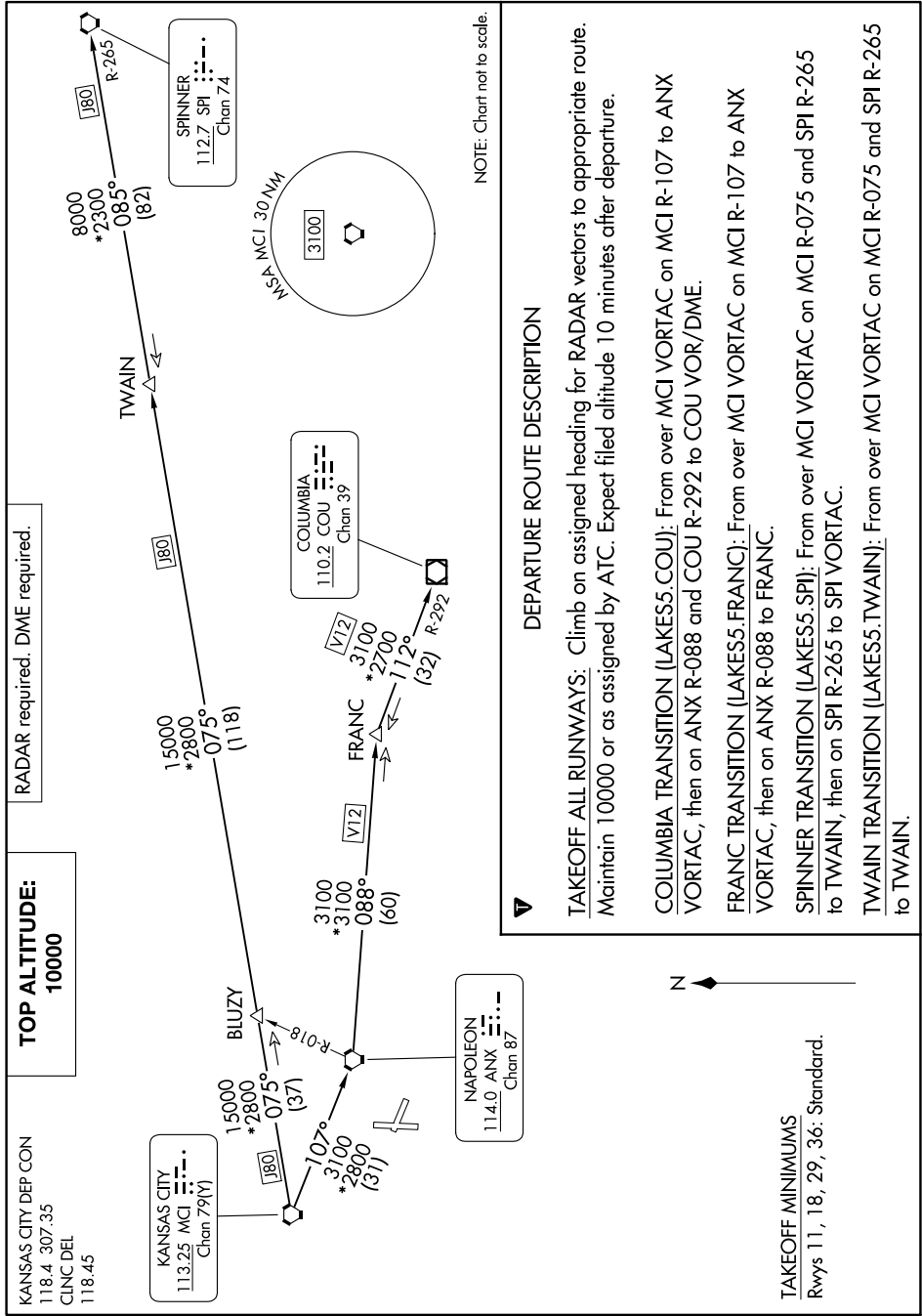
# LAKES FIVE DEPARTURE

AL-6104 (FAA)

LEE'S SUMMIT MUNI (LXT)

LEE'S SUMMIT, MISSOURI

NC-3, 22 FEB 2024 to 21 MAR 2024



## DEPARTURE ROUTE DESCRIPTION

**TAKEOFF ALL RUNWAYS:** Climb on assigned heading for RADAR vectors to appropriate route. Maintain 10000 or as assigned by ATC. Expect filed altitude 10 minutes after departure.

**COLUMBIA TRANSITION (LAKES5.COU):** From over MCI VORTAC on MCI R-107 to ANX VORTAC, then on ANX R-088 and COU R-292 to COU VOR/DME.

**FRANC TRANSITION (LAKES5.FRANC):** From over MCI VORTAC on MCI R-107 to ANX VORTAC, then on ANX R-088 to FRANC.

**SPINNER TRANSITION (LAKES5.SPI):** From over MCI VORTAC on MCI R-075 and SPI R-265 to TWAIN, then on SPI R-265 to SPI VORTAC.

**TWAIN TRANSITION (LAKES5.TWAIN):** From over MCI VORTAC on MCI R-075 and SPI R-265 to TWAIN.

## TAKEOFF MINIMUMS

Rwys 11, 18, 29, 36: Standard.

NC-3, 22 FEB 2024 to 21 MAR 2024

# LAKES FIVE DEPARTURE