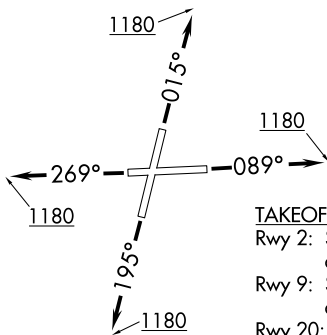


ADELL SIX DEPARTURE (RNAV)

D-ATIS
126.675
GND CON
120.425
LEWIS TOWER ★
134.8 (CTAF)
CHICAGO DEP CON
119.35 354.075

**TOP ALTITUDE:
3000**



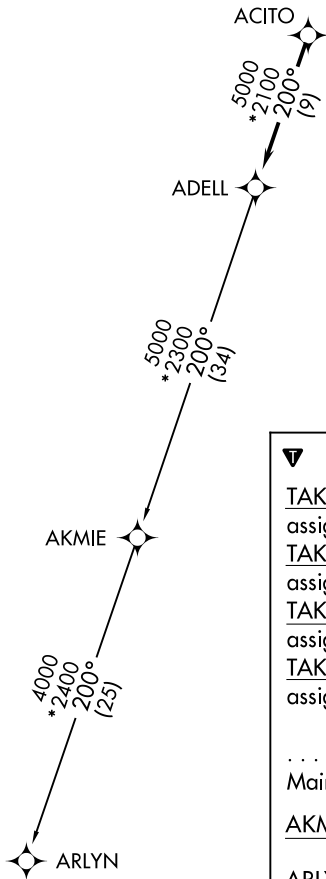
TAKEOFF MINIMUMS:

- Rwy 2: Standard with minimum climb of 420' per NM to 2700.
- Rwy 9: Standard with minimum climb of 310' per NM to 2700.
- Rwy 20: Standard with minimum climb of 370' per NM to 2700.
- Rwy 27: Standard with minimum climb of 340' per NM to 2700.

- NOTE: RADAR required.
- NOTE: DME/DME/IRU or GPS required.
- NOTE: RNAV 1.
- NOTE: Turbojet departures maintain 250K until advised by ATC.
- NOTE: AKMIE Transition: For aircraft inbound to BMI, SPI, PIA, or as assigned by ATC.

EC-3, 22 FEB 2024 to 21 MAR 2024

EC-3, 22 FEB 2024 to 21 MAR 2024



DEPARTURE ROUTE DESCRIPTION

TAKEOFF RUNWAY 2: Climb heading 015° to 1180, then as assigned by ATC, for vectors to ACITO. Thence. . .

TAKEOFF RUNWAY 9: Climb heading 089° to 1180, then as assigned by ATC, for vectors to ACITO. Thence. . .

TAKEOFF RUNWAY 20: Climb heading 195° to 1180, then as assigned by ATC, for vectors to ACITO. Thence. . .

TAKEOFF RUNWAY 27: Climb heading 269° to 1180, then as assigned by ATC, for vectors to ACITO. Thence. . .

. . . . on track 200° to ADELL, then on (transition).
Maintain 3000. Expect filed altitude 10 minutes after departure.

AKMIE TRANSITION (ADELL6.AKMIE):

ARLYN TRANSITION (ADELL6.ARLYN):

NOTE: Chart not to scale.