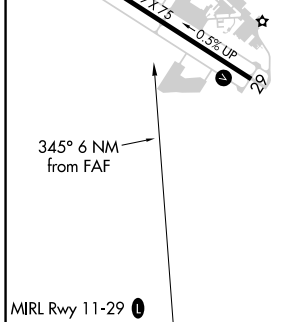
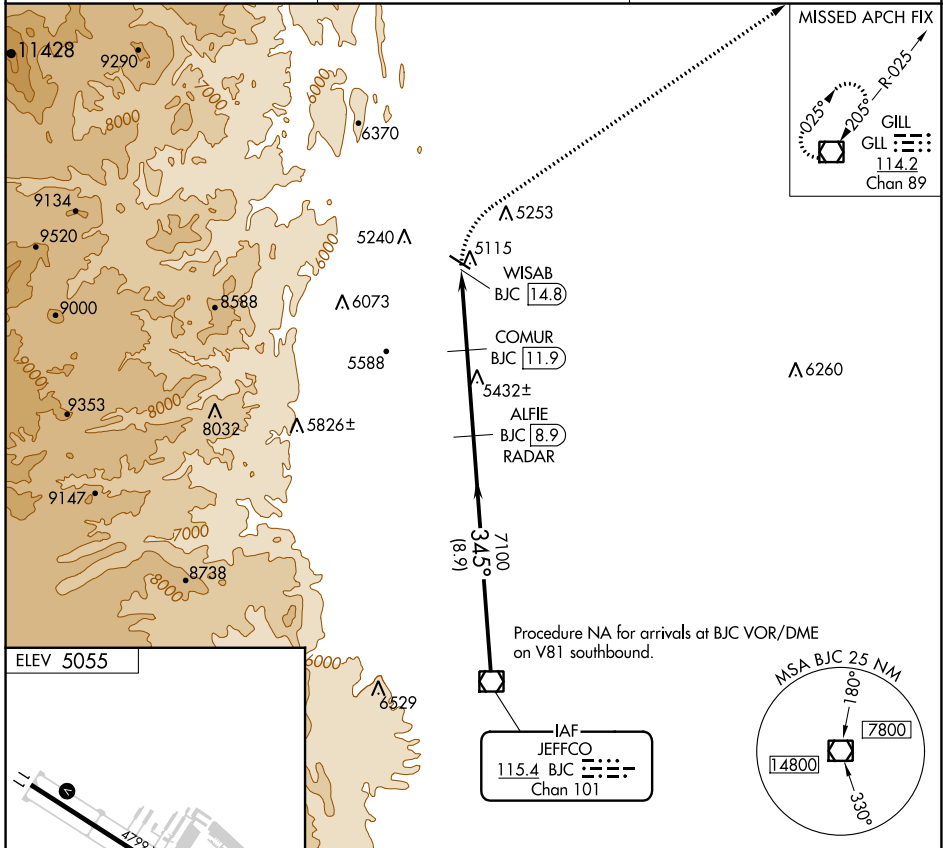


VOR/DME BJC <b>115.4</b> Chan <b>101</b>	APP CRS <b>345°</b>	Rwy Idg TDZE Apt Elev	<b>N/A</b> <b>N/A</b> <b>5055</b>
--	------------------------	-----------------------------	---

# VOR/DME-A

VANCE BRAND (LMO)

<p><b>⚠</b> When local altimeter setting not received, use Denver Intl altimeter setting and increase all MDA 120 feet; and increase Cat C visibility ½ mile and Cat D ¼ mile.</p>	<p>MISSED APPROACH: Climbing right turn to 7000 direct GLL VOR/DME and hold.</p>	
<p>AWOS-3 <b>120.0</b></p>	<p>DENVER APP CON <b>125.12 263.02</b></p>	<p>UNICOM <b>122.975</b> (CTAF) <b>0</b></p>



7000	GLL	ALFIE BJC [8.9] RADAR		BJC VOR/DME
		WISAB BJC [14.8]	COMUR BJC [11.9]	9200
		6020	7100	
		2.9 NM	3.1 NM	8.9 NM
CATEGORY	A	B	C	D
CIRCLING	5640-1	585 (600-1)	5880-2½ 825 (900-2½)	6500-3 1445 (1500-3)

SW-1, 22 FEB 2024 to 21 MAR 2024

SW-1, 22 FEB 2024 to 21 MAR 2024