

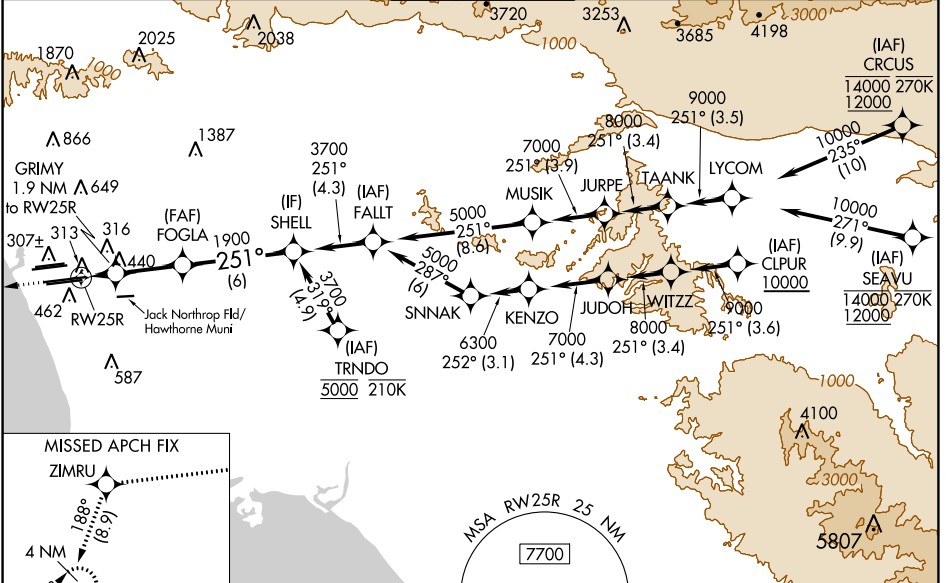
| | | |
|--|------------------------|--|
| WAAS CH 49007 W25B | APP CRS 251° | Rwy Idg 11134 TDZE 104 Apt Elev 128 |
|--|------------------------|--|

RNAV (GPS) Y RWY 25R

LOS ANGELES INTL (LAX)

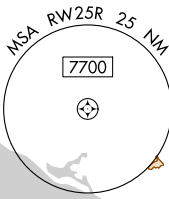
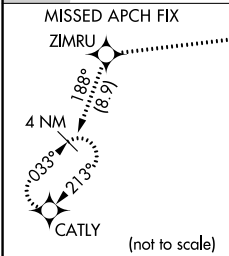
| | | |
|--|-------|--|
| RNP APCH. | MALSR | MISSED APPROACH: Climb to 2000 direct ZIMRU and track 188° to CATLY and hold. |
| <p>▼ For uncompensated Baro-VNAV systems, LNAV/VNAV NA below 5°C or above 54°C. Simultaneous approach authorized. Simultaneous approach authorized with HHR. LNAV procedure NA during simultaneous operations. Use of FD or AP required during simultaneous operations. # RVR 1800 authorized with use of FD or AP or HUD to DA.</p> | | |

| | | | | | | |
|---|--|--|--|---|---|-------|
| D-ATIS ARR 133.8 DEP 135.65 | SOCAL APP CON 124.3 363.2 (APCH FM WEST) 124.5 235.975 (225°-044°) | 124.9 269.0 (090°-224°) 128.5 360.7 (045°-089°) | LOS ANGELES TOWER N 133.9 239.3 S 120.95 379.1 | GND CON N 121.65 327.0 S 121.75 327.0 W 121.4 327.0 | CLNC DEL 120.35 327.0 | CPDLC |
|---|--|--|--|---|---|-------|

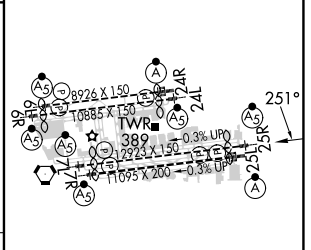
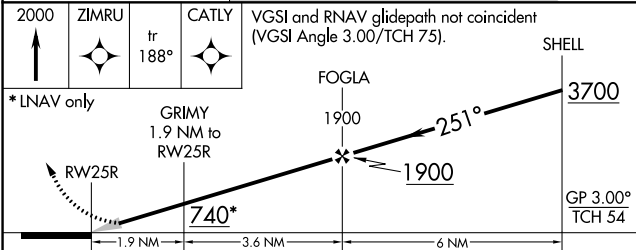


SW-3, 22 FEB 2024 to 21 MAR 2024

SW-3, 22 FEB 2024 to 21 MAR 2024



| | |
|----------|-------------------|
| ELEV 128 | D TDZE 104 |
|----------|-------------------|



| | | | | |
|--------------|--------|---------------|---------------|-------------|
| CATEGORY | A | B | C | D |
| LPV DA# | | 304/24 | 200 (200-1/2) | |
| LNAV/VNAV DA | | 578/60 | 474 (500-1/4) | |
| LNAV MDA | 640/24 | 536 (600-1/2) | 640/55 | 536 (600-1) |

TDZ/CL Rwy's 6R, 7L, 24R, and 25L
HIRL all Rwy's