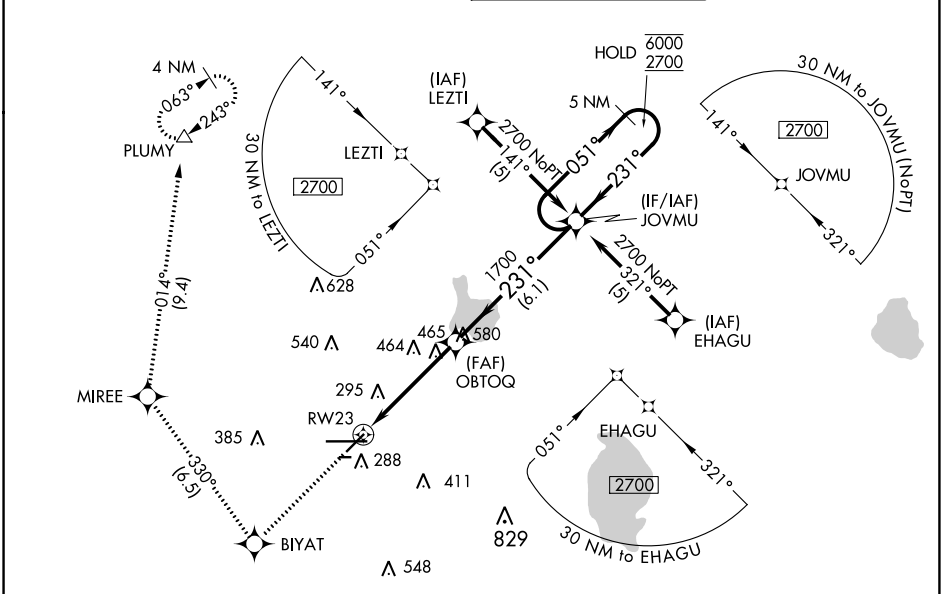


WAAS CH 77805 W23A	APP CRS 231°	Rwy Idg TDZE 141 Apt Elev 142
--	------------------------	---

RNAV (GPS) RWY 23

LAKELAND LINDER INTL (LAL)

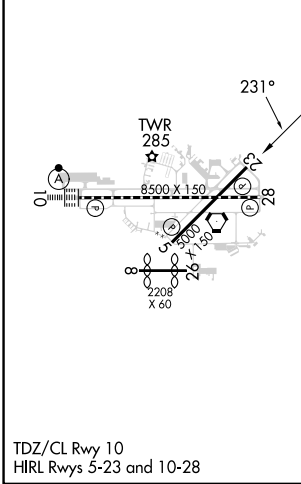
RNP APCH.		<p>▼ For uncompensated Baro-VNAV systems, LNAV/VNAV NA below -15°C or above 54°C. When local altimeter setting not received, use Plant City altimeter setting: increase LPV DA to 444 feet; increase LNAV/VNAV DA to 540 feet; increase all MDAs 20 feet and LNAV Cat C/D and Circling Cat C visibility 1/8 SM. Baro-VNAV and VDP NA when using Plant City altimeter setting. Rwy 23 helicopter visibility reduction below 3/4 SM NA. Circling NA to Rwy's 8 and 26.</p>		<p>MISSED APPROACH: Climb to 2000 direct BIYAT and right turn on track 330° to MIREE then on track 014° to PLUMY and hold.</p>	
ATIS 118.025	TAMPA APP CON 120.65 290.3	LAKELAND TOWER 124.5 236.775	GND CON 121.4		



SE-3, 22 FEB 2024 to 21 MAR 2024

SE-3, 22 FEB 2024 to 21 MAR 2024

ELEV 142	D	TDZE 141
----------	----------	----------



2000	BIYAT	MIREE	PLUMY	VGSI and RNAV glidepath not coincident (VGSI Angle 3.00/TCH 46).
↑	↻ tr 330°	↻ tr 014°	△	
	OBTOQ	JOVMU	5 NM Holding Pattern	
	1.7 NM to RWY 23	1700	6000	2700
		1700	051°	231°
	1.7 NM	3 NM	6.1 NM	
CATEGORY	A	B	C	D
LPV DA	426-1 285 (300-1)			
LNAV/VNAV DA	522-1¼ 381 (400-1¼)			
LNAV MDA	720-1	579 (600-1)	720-1½ 579 (600-1½)	720-1¾ 579 (600-1¾)
CIRCLING	720-1	578 (600-1)	720-1½ 578 (600-1½)	840-2¼ 698 (700-2¼)
TDZ/CL Rwy 10	HIRL Rwy's 5-23 and 10-28			