

APP CRS	Rwy Idg	<b>6027</b>
<b>227°</b>	TDZE	<b>2429</b>
	Apt Elev	<b>2454</b>

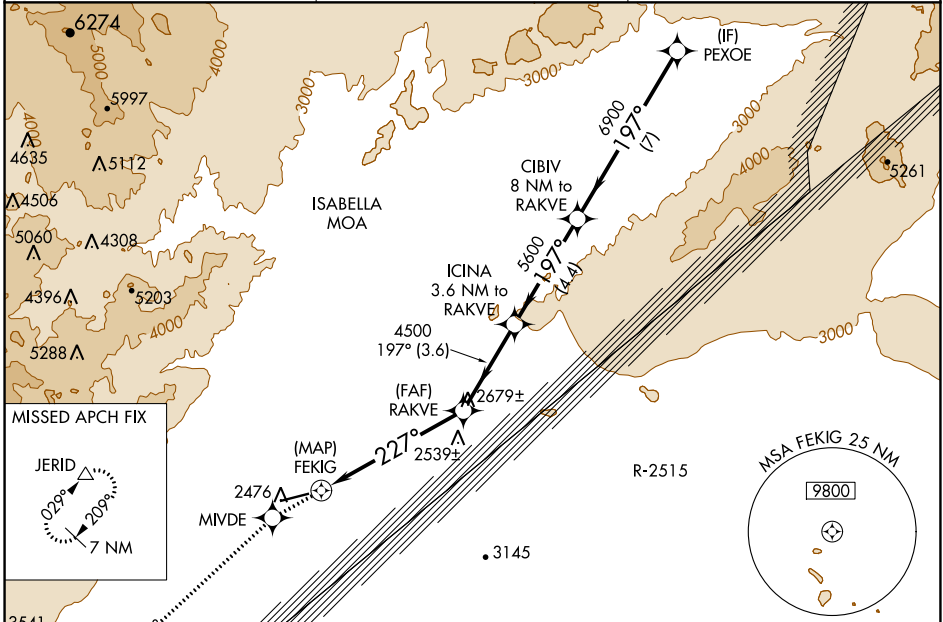
# RNAV (GPS) RWY 24

CALIFORNIA CITY MUNI (L71)

RNP APCH.  
 ▼ If local altimeter setting not received, use Edwards AFB altimeter setting and increase all MDAs 60 feet; if neither received, procedure not authorized.  
 ▲ NA

MISSED APPROACH: Climb to 9000 direct MIVDE and via 213° track to JERID and hold, continue climb-in-hold to 9000.

AWOS-1 <b>120.875</b>	JOSHUA APP CON <b>133.65 348.7</b>	UNICOM <b>122.7 (CTAF) ①</b>
--------------------------	---------------------------------------	---------------------------------



SW-3, 22 FEB 2024 to 21 MAR 2024

SW-3, 22 FEB 2024 to 21 MAR 2024

ELEV 2454 | TDZE 2429

**RADAR REQUIRED**

9000	MIVDE	JERID	VGSI and descent angles not coincident (VGSI Angle 3.00/TCH 40).	PEXOE
↑	213° tr	▲		
			ICINA 3.6 NM to RAKVE	CIBIV 8 NM to RAKVE
			RAKVE	9000
			FEKIG	6900
			≤ 3.05° TCH 50	Procedure Turn NA
			4500	5600
			227°	197°
			0.5	5.8 NM
			3.6 NM	4.4 NM
			7 NM	

ELEV 2454	TDZE 2429
-----------	-----------

MRL Rwy 6-24 ①  
REL Rwy 24 ①

CATEGORY	A	B	C	D
LNAV MDA	2820-1	391 (400-1)		NA
CIRCLING	2960-1	506 (600-1)	3080-1¾ 626 (700-1¾)	NA