

APP CRS
250°

Rwy Idg **5011**
 TDZE **520**
 Apt Elev **522**

RNAV (GPS) RWY 26

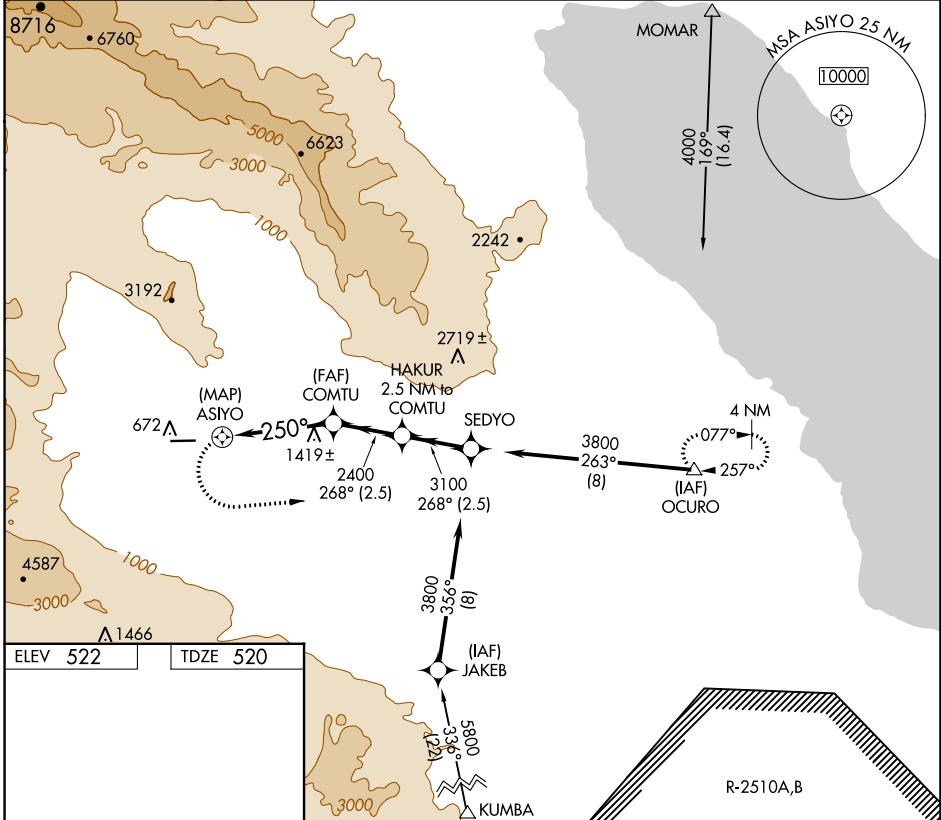
BORREGO VALLEY (L08)

RNP APCH-GPS

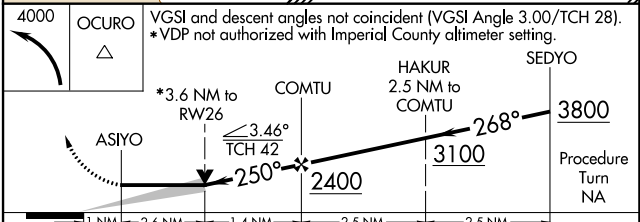
▼ If local altimeter setting not received, use Imperial County altimeter setting and increase all MDAs 580 feet. Circling not authorized south of Rwy 8-26.

▲ MISSED APPROACH: Climbing left turn to 4000 direct OCURO WP and hold.

AWOS-3P **126.575** LOS ANGELES CENTER **128.6 291.7** UNICOM **122.8 (CTAF) 0**



ELEV 522 TDZE 520



| CATEGORY | A | B | C | D |
|----------|---------------------------|---------------------------|-------------------------|---------------|
| LNAV MDA | 1720-1¼ 1200 (1200-1¼) | 1720-1½ 1200 (1200-1½) | 1720-3 | 1200 (1200-3) |
| CIRCLING | 1720-1¼ 1198 (1200-1¼) | 1720-1½ 1198 (1200-1½) | 1840-3 1318 (1400-3) | NA |

SW-3, 22 FEB 2024 to 21 MAR 2024

SW-3, 22 FEB 2024 to 21 MAR 2024