

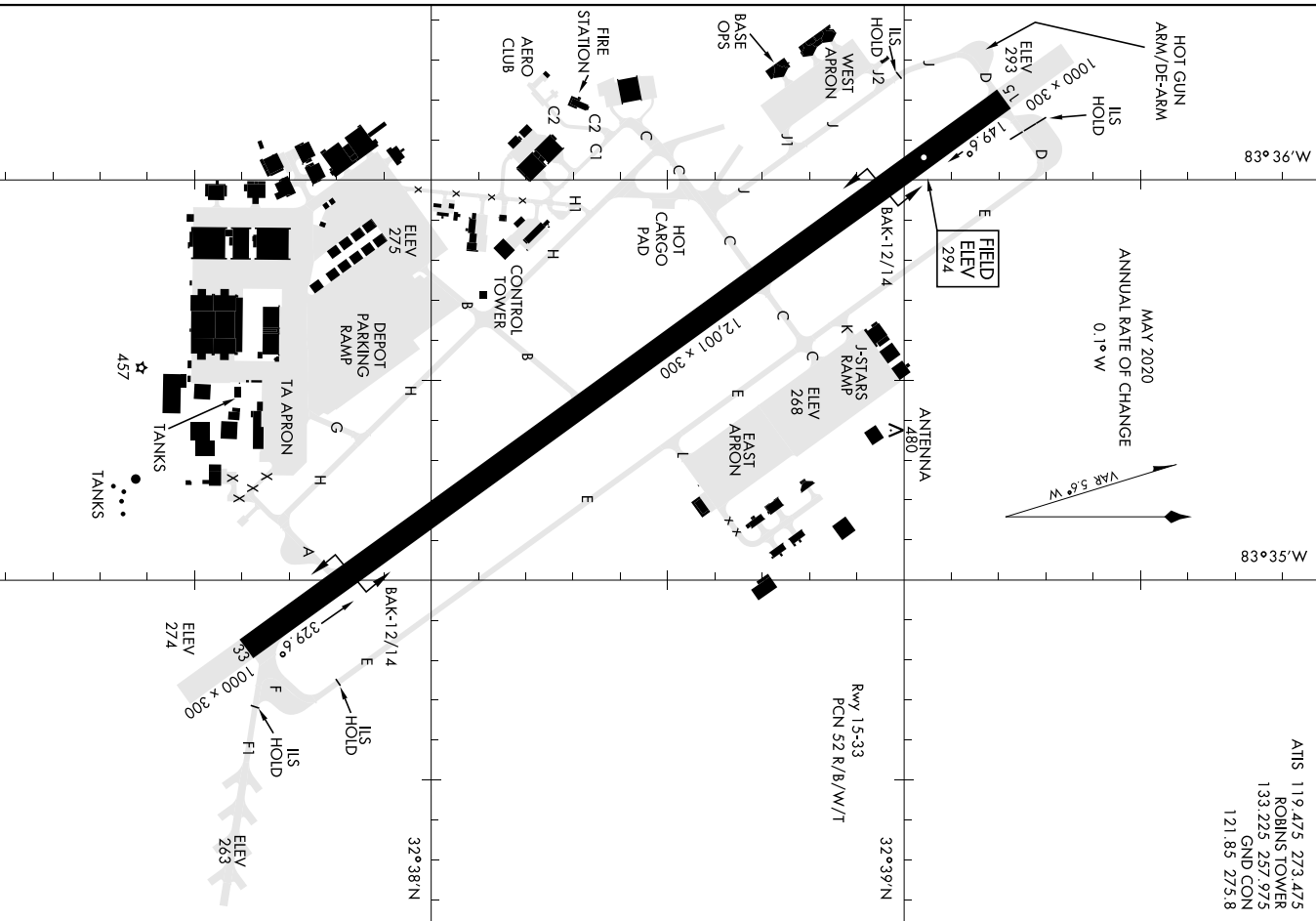
20142

AIRPORT DIAGRAM

AFD-442 [USAF]

ROBINS AFB (KWRB)
WARNER ROBINS, GEORGIA

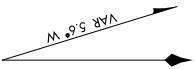
ATIS 119.475 273.475
ROBINS TOWER
133.225 257.975
GND CON
121.85 275.8



N. 93°36'88"

83°35'W

MAY 2020
ANNUAL RATE OF CHANGE
0.1°W



E FIELD
ELEV
294

32°39'N

Rwy 15-33
PCN 52 R/B/W/T

SE-4, 22 FEB 2024 to 21 MAR 2024

SE-4, 22 FEB 2024 to 21 MAR 2024

32°38'N

AIRPORT DIAGRAM

WARNER ROBINS, GEORGIA
ROBINS AFB (KWRB)

AL-442 [USAF]

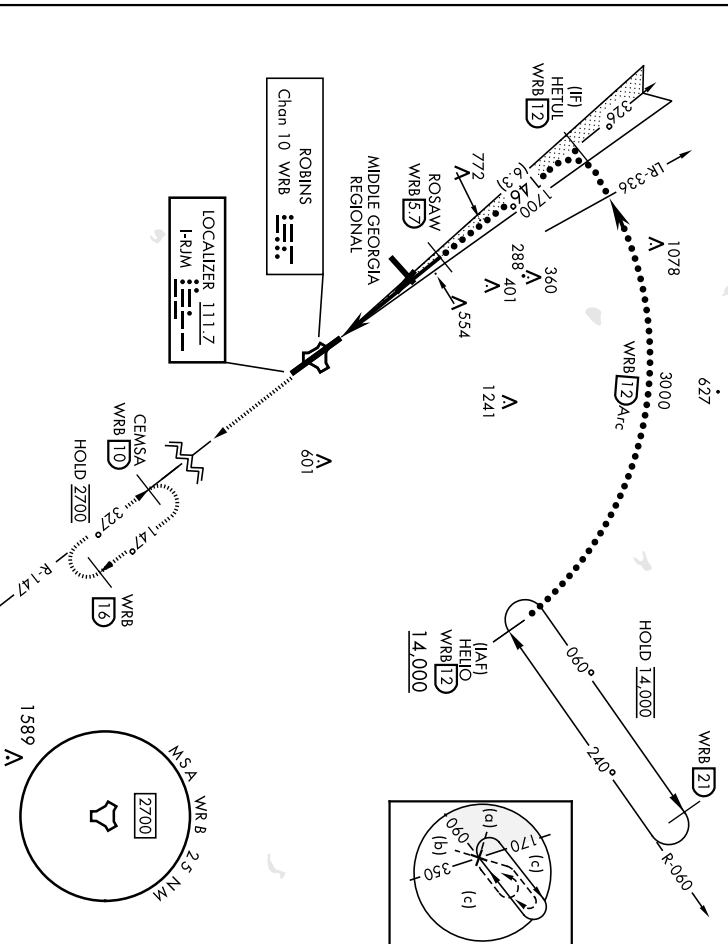
ROBINS AFB (KWRB)

LOC I-RUM 111.7	APCH CRS 146°	Fix/Idg TDZE Elev 294	294
--------------------	------------------	-----------------------------	-----

ALSF-1
A1

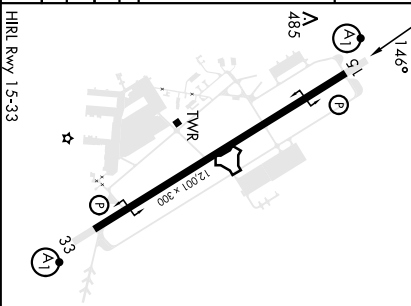
MISSED APPROACH: Climb To 2700 on WRB TACAN
R-147 to CEMSA and hold

ATIS 119.475 273.475	ATLANTA APP CON 124.2 279.6	TOWER 133.225 257.975	GND CON 121.85 275.8
-------------------------	--------------------------------	--------------------------	-------------------------



EMERG SAFE ALT 100 NM 3700

GS 2.70 ° TCH 54	3000' 146°	1700'	1200'
HELTUL [D2]	ROSAW [57]	TACAN [D1]	JEGMO [D1]
CATEGORY	C	D	E
SLIS 15*	494/224	200	(200-1/2)
S-LOC 15***	840/60	546	(600-1/8)
*** CIRCLING	586 (600-1/8)	666 (700-2)	746 (800-2/1)



WARNER ROBINS, GEORGIA
Archt 1 12AUG21
32°38'N-83°36'W
ROBINS AFB (KWRB)

HILLS or LOC Z Rwy 15

AL-442 [USAF]

ROBINS AFB (KW/RB)

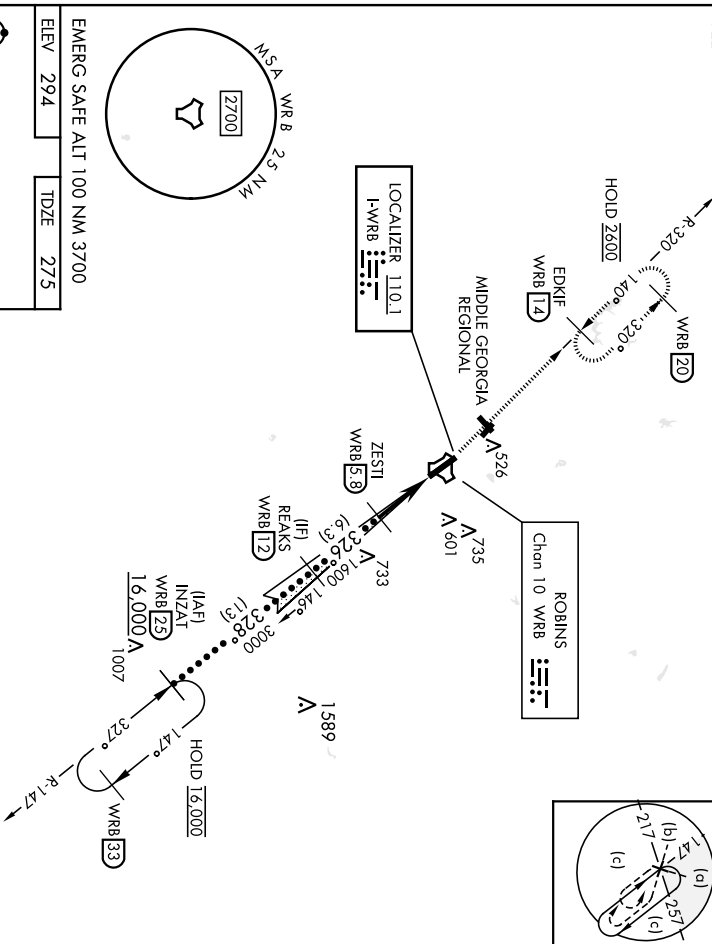
LOC I-WRB	APCH CRS	Req'd Idg	12,001
110-1	326°	TDZE Elev	275
		Appt Elev	294



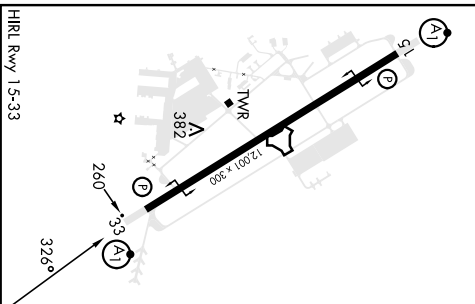
MISSED APPROACH: Climb To 2600 on WRB TACAN R-320 to EDKIF and hold.

ATIS	ATLANTA APP CON	TOWER	GND CON
119.475 273.475	124.2 279.6	133.225 257.975	121.85 275.8

922



EMERG SAFE ALT 100 NM 3700
ELEV 294 TDZE 275



2600 WRB R-320	EDKIF WRB 174	TACAN	ZESTI 53	REAKS 12
		FOGEX 1		
CATEGORY		C	D	E
S-ILS 33 *		475/24	200	(200-1/1)
S-LOC 33**		640/35	365	(400-3/1)
		880-1 1/2	960-2	1040-2 3/4
		586 (600-1 1/2)	666 (700-2)	746 (800-2 3/4)
		4.8 NM		GS 2.52°
				TCH 54

WARNER ROBINS, GEORGIA
Orig 20MAY21

32°38'N-83°36'W ROBINS AFB (KW/RB)

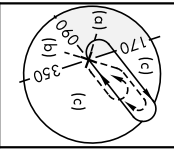
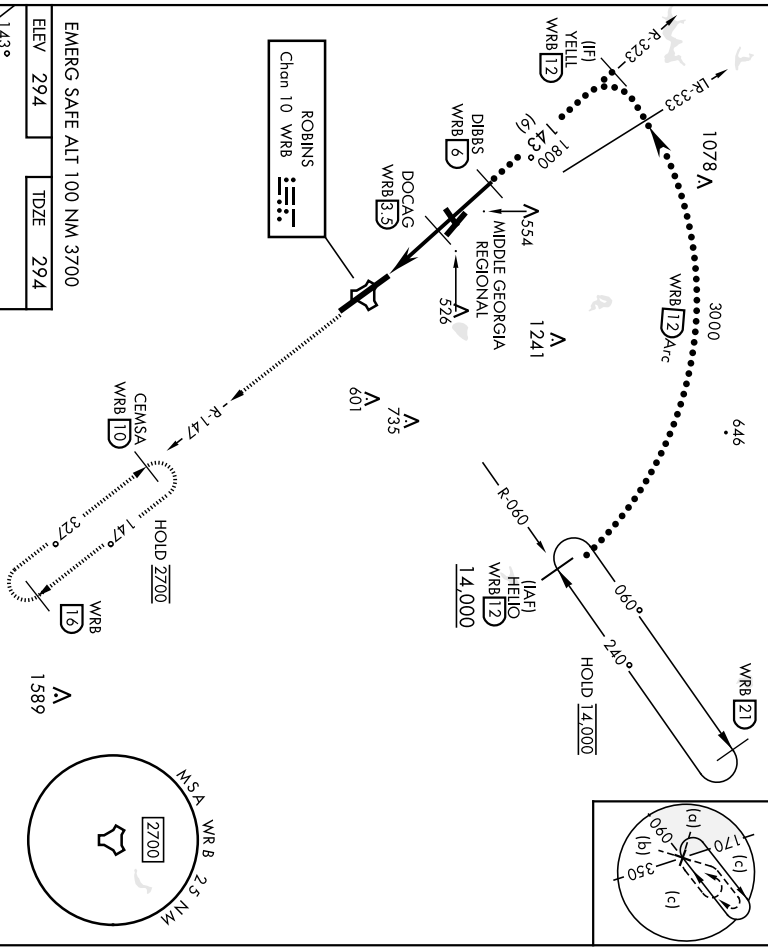
HILLS or LOC Z RWY 33

AI-442 [USAF]

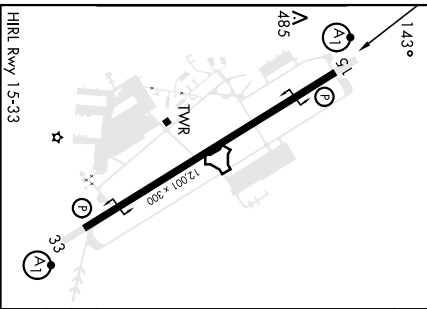
ROBINS AFB (KWRB)

TACAN WRB Chan 10	APCH CRS 143°	Fix/Ideg TDZE Appl Elev	12,001 294 294
AITS		ATLANTA APP CON	
119.475 273.475		124.2 279.6	

AISF-1 	MISSED APPROACH: Climb to 2700 on WRB TACAN R-147 to CEMSA and hold.
TOWER	133.225 257.975
GND CON	121.85 275.8



EMERG SAFE ALT 100 NM 3700
ELEV 294 TDZE 294



CATEGORY	C	D	E
	S-1.5*	820/55	526
CIRCLING**	880-1½	960-2	1040-2¾
	586 (600-1½)	666 (700-2)	746 (800-2¾)

WARNER ROBINS, GEORGIA
Orig 20MAY21

ROBINS AFB (KWRB)
HI-TACAN Z RWY 15

TACAN WRB APCH CRS **327°** TDZE **275** T/Elev **294**

HI-TACAN Z RWY 33

AI-442 [USAF]

ROBINS AFB (KW/RB)

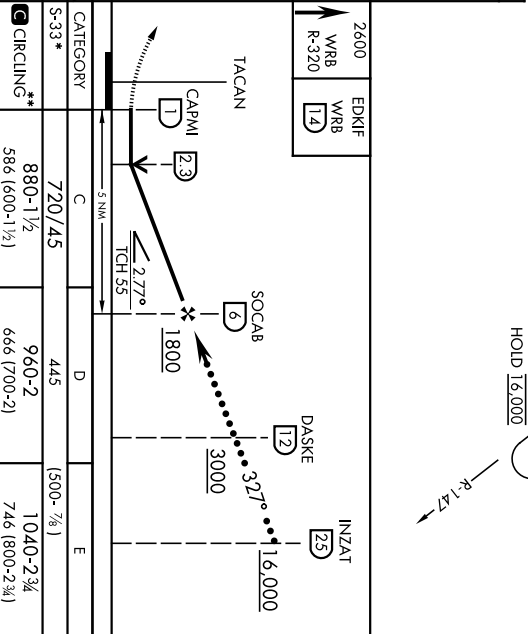
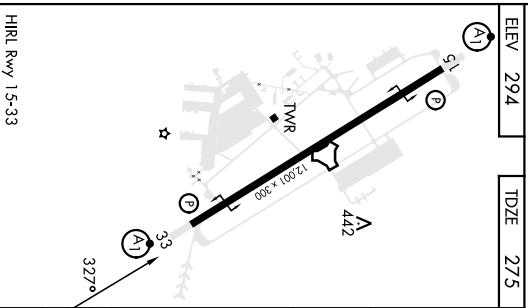
AI SF-1

MISSED APPROACH: Climb To 2600 on WRB TACAN R-320 to EDKIF and hold.

ATIS 119,475 273,475 ATLANTA APP CON 124.2 279.6

TOWER 133.225 257.975

GND CON 121.85 275.8



CATEGORY	C	D	E
S-33*	720/45	445	(300-78) 1
CIRCLING**	880-1½ / 586 (600-1½)	960-2 / 666 (700-2)	1040-2¾ / 746 (800-2¾) 1

WARNER ROBINS, GEORGIA

32°38'N-83°36'W

ROBINS AFB (KW/RB)

Orig 20MAY21

HI-TACAN Z RWY 33

AL-442 [USAF]

ROBINS AFB (KWRB)

LOC I-RJM 111.7	APCH CRS 146°	Rwy Idg 12,001
		TDZE 294
		Appt Elev 294

ALSF-1

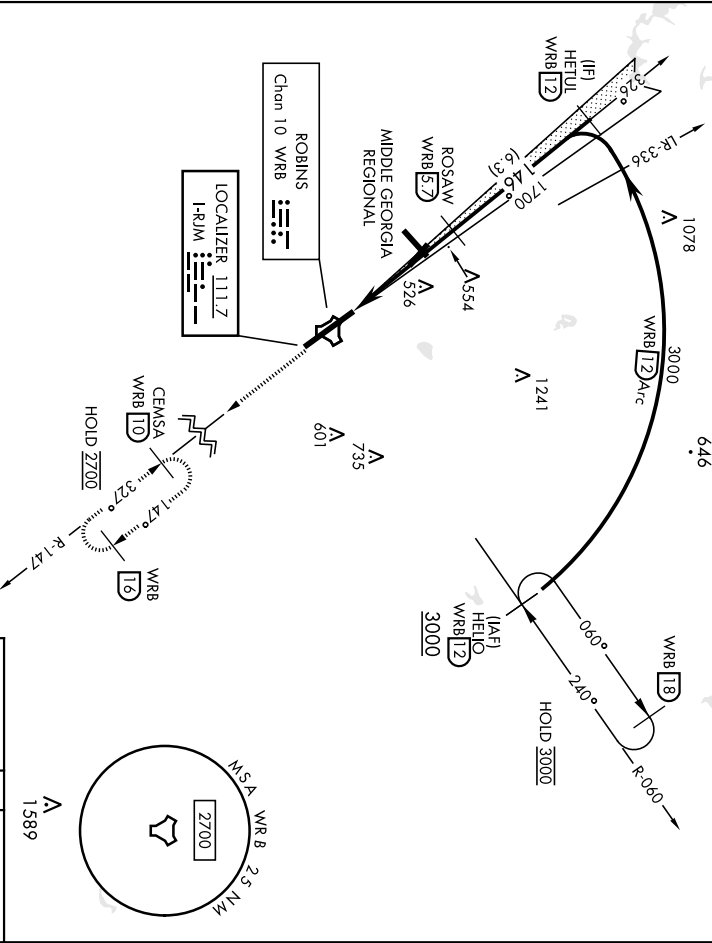
MISSED APPROACH: Climb To 2700 on WRB TACAN
R-147 to CEMSA and hold

ATIS 119.475 273.475	ATLANTA APP CON 124.2 279.6
--------------------------------	---------------------------------------

TOWER 133.225 257.975

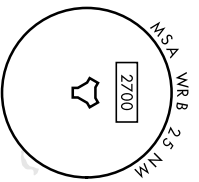
GND CON 121.85 275.8

*** Circling NA SW of Rwy 15-33.

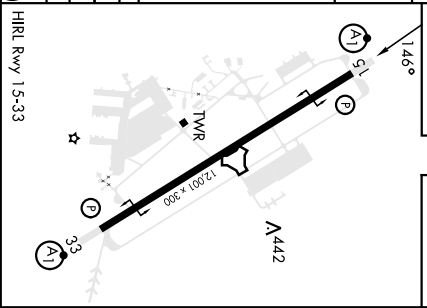


EMERG SAFE ALT 100 NM 3700

2700 WRB R-147	CEMSA WRB 10
----------------------	--------------------

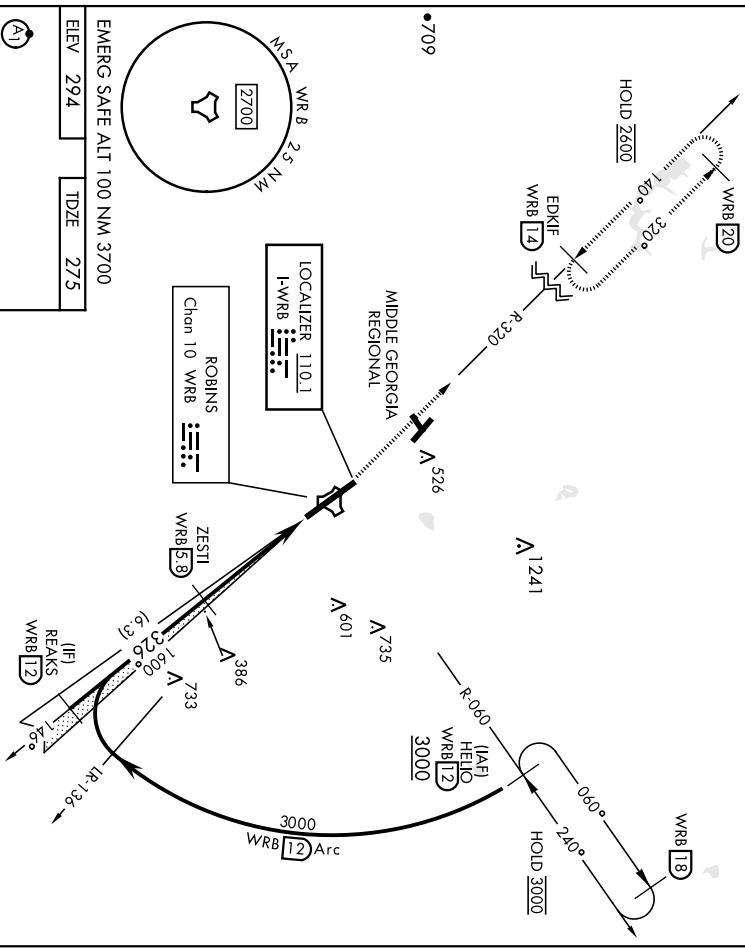


CATEGORY	A	B	C	D	E
S-ILS 15*	494/24		200	1200-1½	
S-LOC 15**	840/24 546 (600-½)		840/60	546 (600-1½)	
CIRCLING ***	840-1 546 (600-1)	880-1½	960-2	1040-2¾	
		586 (600-1¾)	666 (700-2)	746 (800-2¾)	



WARNER ROBINS, GEORGIA
Archt 1 12AUG21
32°38'N-83°36'W
ROBINS AFB (KWRB)
ILS or LOC Y RWY 15

LOC I-WRB 110.1	APCH CRS 326°	Req'd Idg TDZE Appl Elev 275 294	AL-442 [USAF]	ATLANTA APP CON 124.2 279.6	TOWER 133.225 257.975	GND CON 121.85 275.8
▲ **When ALS Inop, increase RVR to 40, vis to 3/4 mile. *** When ALS Inop, increase RVR to 55, vis to 1 mile. **** Gridding NA SW of Rwy 15-33.			ALSF-1 	MISSED APPROACH: Climb To 2600 on WRB TACAN R-320 to EDKIF and hold.		
ATIS 119.475 273.475		TOWER 133.225 257.975		GND CON 121.85 275.8		



2600 WRB R-320	EDKIF WRB 174	CATEGORY A B C D E S-ILS 33* 475/24 (200-1/2) S-LOC 33** 640/24 365 (400-1/2) 640/35 365 (400-5/8) *** CIRCLING 780-1 486 (500-1) 586 (600-1 1/2) 666 (700-2) 746 (800-2 3/4)				
TACAN FOGEX (D 1) ZESTI (58) REAKS (R-326) TCH 54 GS 2.52°		GS 2.52° TCH 54				

HRL Rwy 15-33
 WARNER ROBINS, GEORGIA
 Orig 20MAY21
 ILS or LOC Y RWY 33
 32°38'N-83°36'W
 ROBINS AFB (KW/RB)

RNAV (GPS) RWY 15

APCH CRS	Rwy Idg	12,001
146°	TDZE	294
	Arprt Elev	294

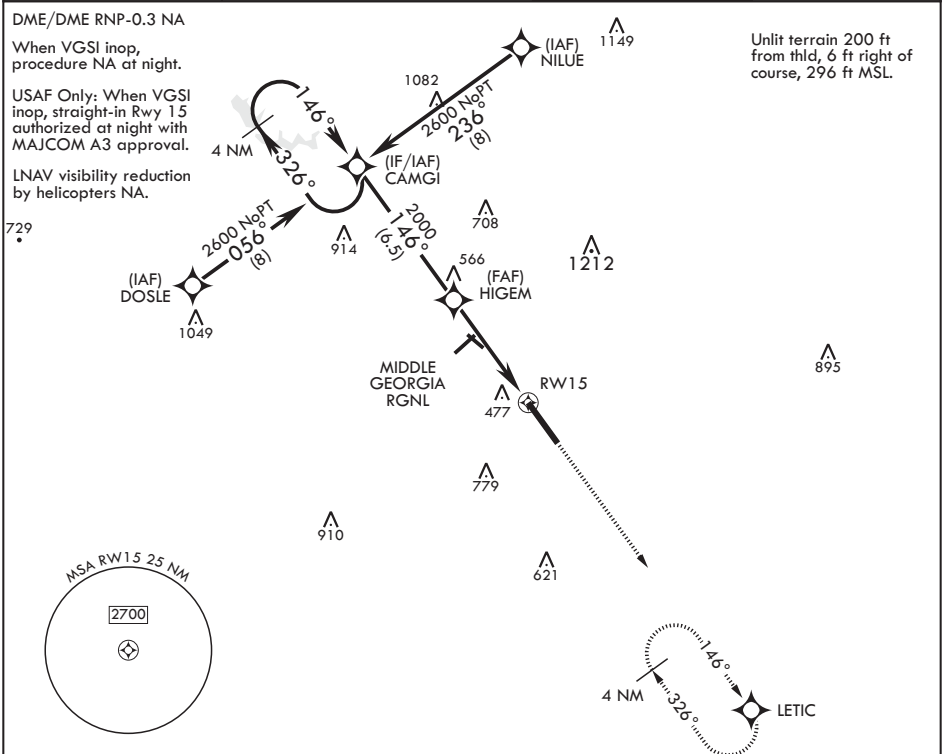
AL-442 (USAF)

ROBINS AFB (KWRB)

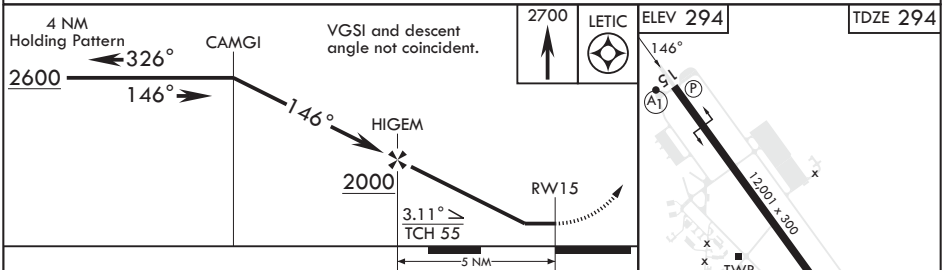
⚠ * When ALS inop, increase CAT AB RVR to 55, vis to 1 mile, CAT CDE vis to 1 5/8 miles.
 ** Circling NA SW of Rwy 15-33.

⚠ MISSED APPROACH: Climb to 2700 direct LETIC and hold.

ATIS 119.475 273.475	ATLANTA APP CON/DEP CON 124.2 279.6	TOWER 133.225 257.975	GND CON 121.85 275.8
--------------------------------	---	---------------------------------	--------------------------------



EMERG SAFE ALT 100 NM 3700



CATEGORY	A	B	C	D	E
LNVA MDA*	860/50	566 (600-1)	860-1¼	566	(600-1¼)
C CIRCLING**	860-1	567 (600-1)	860-1½ 567 (600-1½)	960-2 667 (700-2)	1100-2¾ 807 (900-2¾)

RNAV (GPS) RWY 15

SE-4, 22 FEB 2024 to 21 MAR 2024

SE-4, 22 FEB 2024 to 21 MAR 2024

WARNER ROBINS, GEORGIA

RNAV (GPS) RWY 33

APCH CRS	Rwy Idg	12,001
326°	TDZE	275
	Arprt Elev	294

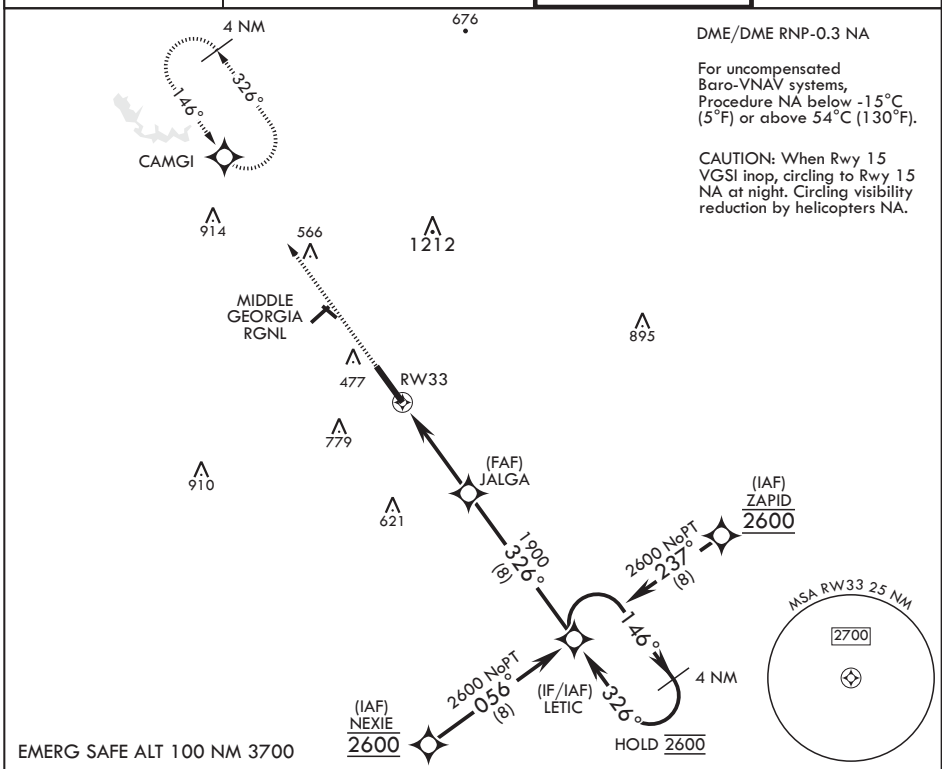
AL-442 (USAF)

ROBINS AFB (KWRB)

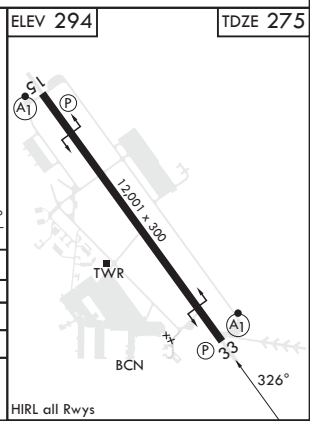
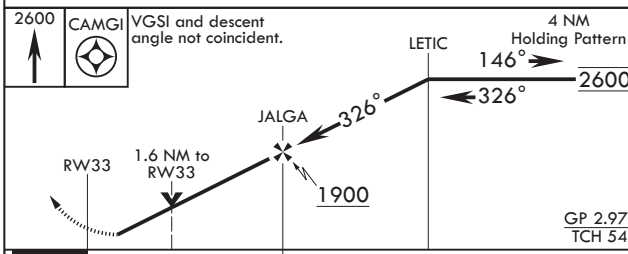
* When ALS inop increase CAT ABCDE vis to 1 7/8 miles.
 ** When ALS inop, increase CAT AB RVR to 55, vis to 1 mile, CAT CDE vis to 1 3/8.
 *** Circling NA SW of RWY 33-15.

ALSF-1 MISSED APPROACH: Climb to 2600 direct CAMGI and hold.

ATIS 119.475 273.475	ATLANTA APP CON/DEP CON 124.2 279.6	TOWER 133.225 257.975	GND CON 121.85 275.8
-------------------------	--	--------------------------	-------------------------



EMERG SAFE ALT 100 NM 3700



CATEGORY	A	B	C	D	E
LNAV/VNAV DA*	820-1 ³ / ₈		545	(600-1 ³ / ₈)	
LNAV MDA**	760/24	485 (500-1/2)	760/50	485	(500-1)
CIRCLING***	820-1 ³ / ₈	486 (600-1 ³ / ₈)	840-1 ¹ / ₂ 546 (600-1 ¹ / ₂)	960-2 666 (700-2)	1100-2 ³ / ₄ 806 (900-2 ³ / ₄)

WARNER ROBINS, GEORGIA

32°38'N - 83°36'W

ROBINS AFB (KWRB)

Amdt 5 20MAY21

RNAV (GPS) RWY 33

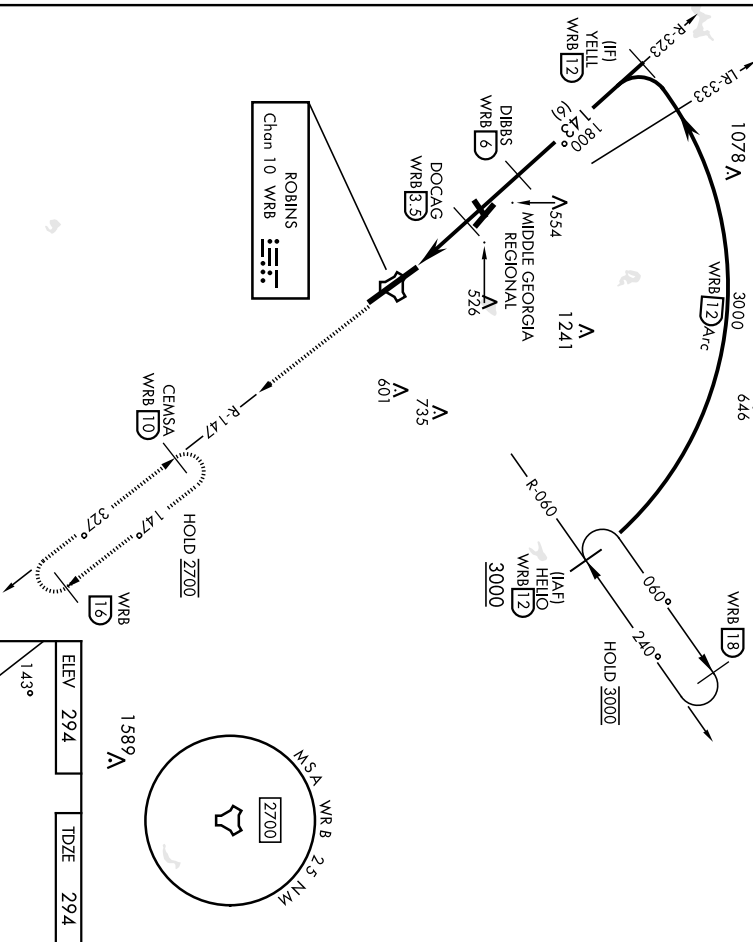
SE-4, 22 FEB 2024 to 21 MAR 2024

SE-4, 22 FEB 2024 to 21 MAR 2024

TACAN Y RWY 15

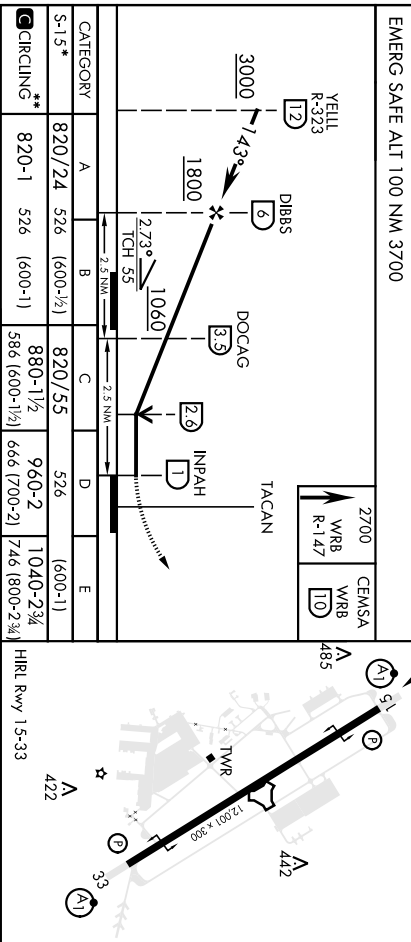
ROBINS AFB (KWRB)

TACAN WRB Chon 10	APCH CRS 143°	Req'd Idg TDZE 294	294 Appt Elev 294	AL-442 [USAF]	MISSED APPROACH: Climb To 2700 on WRB TACAN R-147 to CEMSA and hold.	TOWER 133.225 257.975	GND CON 121.85 275.8
ATTN 119.475 273.475		ATLANTA APP CON 124.2 279.6		A1			
*When A15 Inop, increase CAT AB RVR to 55, vis to 1 mile; CAT CDE vis to 1 1/2 miles. **Circling not authorized SW of Rwy 15-33.							

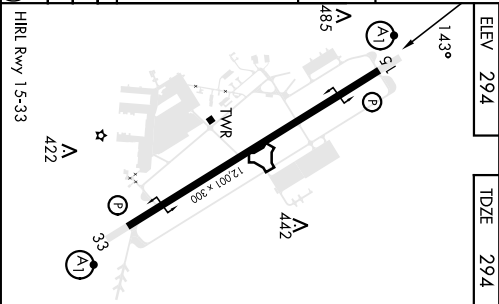


SE-4, 22 FEB 2024 to 21 MAR 2024

SE-4, 22 FEB 2024 to 21 MAR 2024



CATEGORY	A	B	C	D	E
S-15*	820/24 526 (600-1/2)	820/55	526	1040-2 3/4 (600-1)	
CIRCLING**	820-1 526 (600-1)	880-1 1/2	960-2	1040-2 3/4 (600-1)	
		586 (600-1 1/2)	666 (700-2)	746 (800-2 3/4)	



WARNER ROBINS, GEORGIA
 ROBINS AFB (KWRB)
 Orig 20MAY21
 32°38'N-83°36'W

TACAN Y RWY 15

AL-442 [USAF]

ROBINS AFB (KW/RB)

TACAN WRB	APCH CRS	Rwy Idg	12,201
Chon 10	327°	TDE Elev	275
		Appl Elev	294



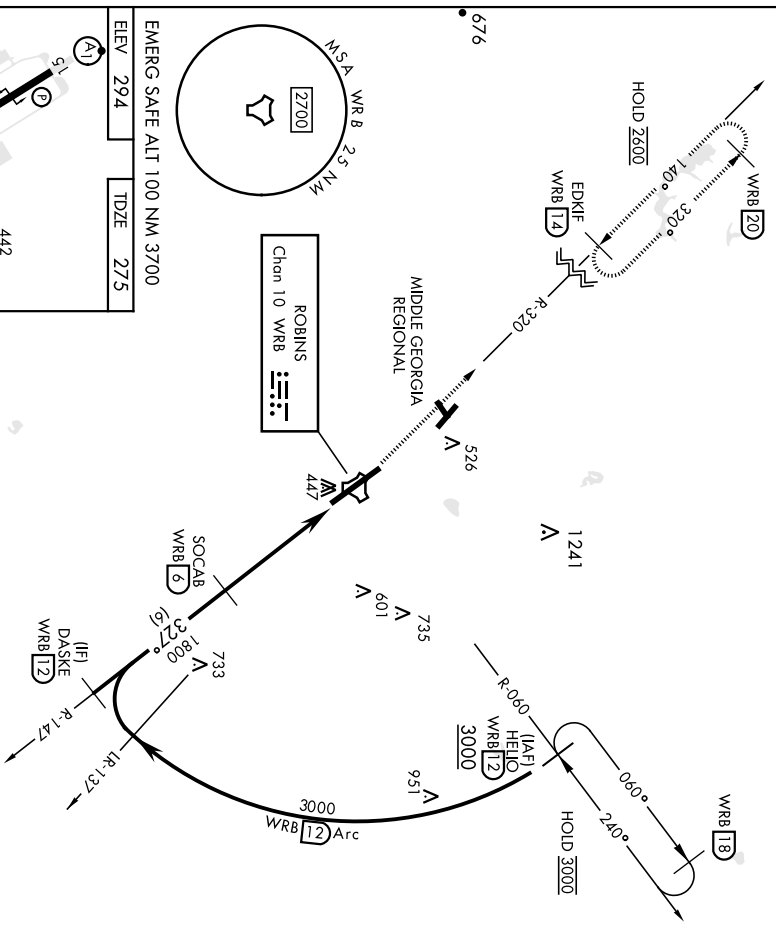
MISSED APPROACH: Climb To 2600 on WRB TACAN
 R-320 to EDKIF and hold.

ATTIS
119,475 273,475

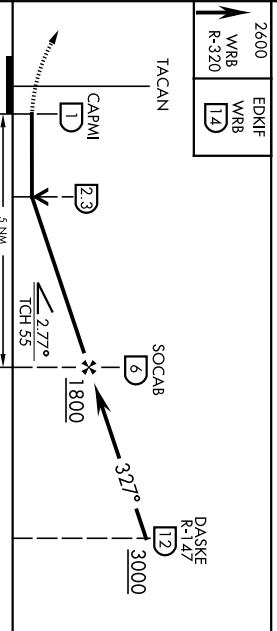
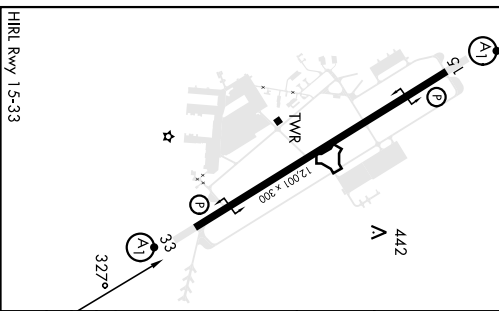
ATLANTA APP CON
124,2 279,6

TOWER
133,225 257,975

GND CON
121,85 275,8



EMERG SAFE ALT 100 NM 3700
 ELEV 294 TDE 275



CATEGORY	A	B	C	D	E
S-33*	720/24	445 (500-½)	720/45	445	(500-¾)
** CIRCLING	780-1	486 (500-1)	880-1½	960-2	1040-2¾
			586 (600-1½)	666 (700-2)	746 (800-2¾)

HRL Rwy 15-33
 WARNER ROBINS, GEORGIA
 Anch 1 11AUG22
 ROBINS AFB (KW/RB)
TACAN Y RWY 33