

APP CRS	Rwy Idg	7201
252°	TDZE	2341
	Apt Elev	2351

RNAV (GPS) RWY 24

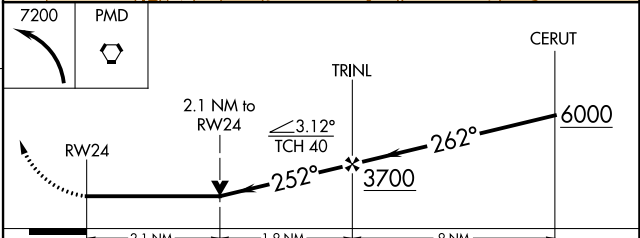
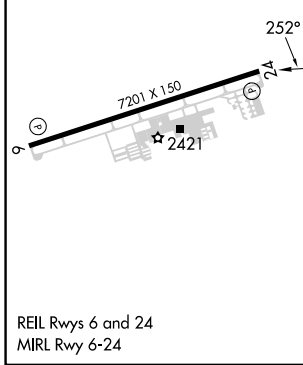
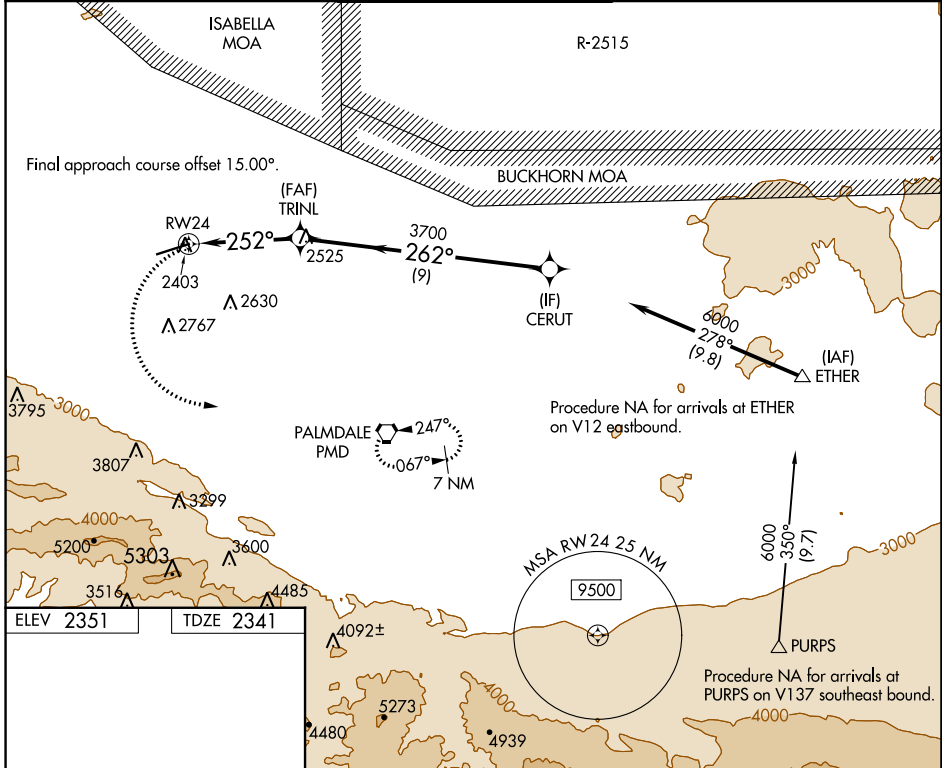
GENERAL WM J FOX AIRFIELD (WJF)

RNP APCH - GPS.

▼ Rwy 24 helicopter visibility reduction below 3/4 NA. VDP NA when using
 ▲ Palmdale altimeter setting. When local altimeter setting not received, use
 Palmdale altimeter setting and increase all MDAs 60 feet and LNAV
 visibility Cat C/D 1/8 SM, and Circling visibility Cat C/D 1/4 SM.

MISSED APPROACH: (Do not exceed 210K until
 PMD VORTAC) Climbing left turn to 7200 direct
 PMD VORTAC and hold, continue climb-in-hold
 7200.

ATIS 126.3	JOSHUA APP CON 126.1 290.3	FOX TOWER* 118.525 (CTAF) 256.9	GND CON 121.7 256.9	UNICOM 122.95
----------------------	--------------------------------------	---	-------------------------------	-------------------------



CATEGORY	A	B	C	D
LNAV MDA	3060-1	719 (800-1)	3060-2	719 (800-2)
CIRCLING	3060-1	709 (800-1)	3120-2 1/4 769 (800-2 1/4)	3120-2 1/2 769 (800-2 1/2)

SW-3, 22 FEB 2024 to 21 MAR 2024

SW-3, 22 FEB 2024 to 21 MAR 2024

WAAS CH 93702 W06A	APP CRS 057°	Rwy Idg TDZE Apt Elev	7201 2351 2351
--	------------------------	-----------------------------	---

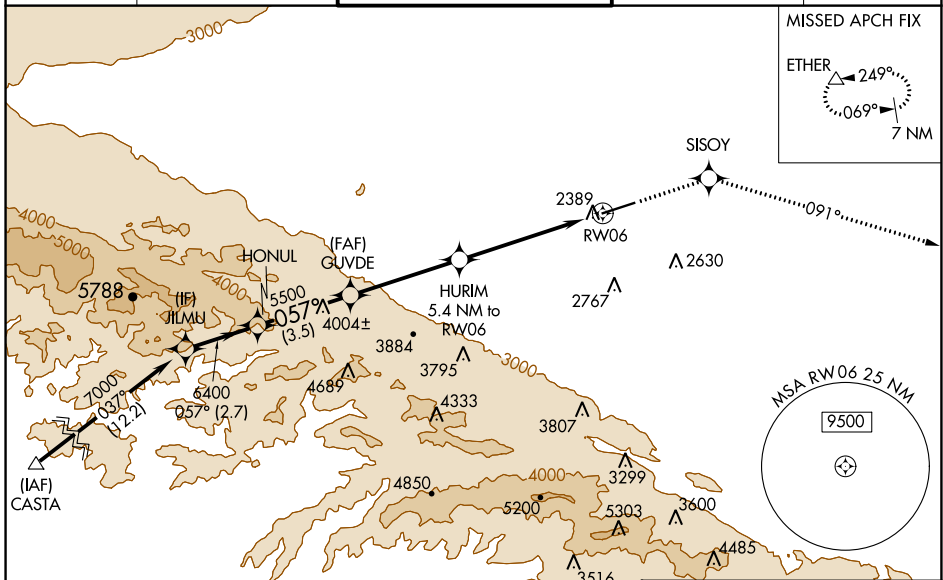
RNAV (GPS) RWY 6

GENERAL WM J FOX AIRFIELD (WJF)

▼ When VGSI inop, Straight-in/Circling Rwy 6 procedure NA at night.
▲ DME/DME RNP-0.3 NA. Visibility reduction by helicopters NA.
▼ For uncompensated Baro-VNAV systems, LNAV/VNAV NA below -19°C (-2°F) or above 45°C (113°F). When local altimeter setting not received, use Palmdale altimeter setting: increase LPV DA to 2661 feet, LNAV/VNAV DA to 2709 feet and all MDAs 60 feet, and increase Circling Cats C/D visibility ¼ SM. Baro-VNAV NA when using Palmdale altimeter setting.

MISSED APPROACH: Climb to 6000 direct SISOY and via 091° track to ETHER and hold.

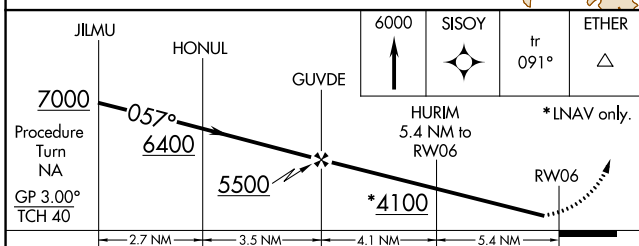
ATIS 126.3	JOSHUA APP CON 126.1 290.3	FOX TOWER* 118.525 (CTAF) 256.9	GND CON 121.7 256.9	UNICOM 122.95
----------------------	--------------------------------------	---	-------------------------------	-------------------------



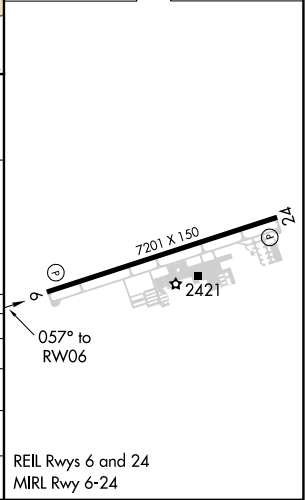
SW-3, 22 FEB 2024 to 21 MAR 2024

SW-3, 22 FEB 2024 to 21 MAR 2024

ELEV 2351	TDZE 2351
-----------	-----------



CATEGORY	A	B	C	D
LPV DA	2601-1		250 (300-1)	
LNAV/VNAV DA	2649-1		298 (300-1)	
LNAV MDA	2940-1 589 (600-1)		2940-1½ 589 (600-1½)	2940-1¾ 589 (600-1¾)
CIRCLING	2940-1 589 (600-1)		3120-2¼ 769 (800-2¼)	3120-2½ 769 (800-2½)



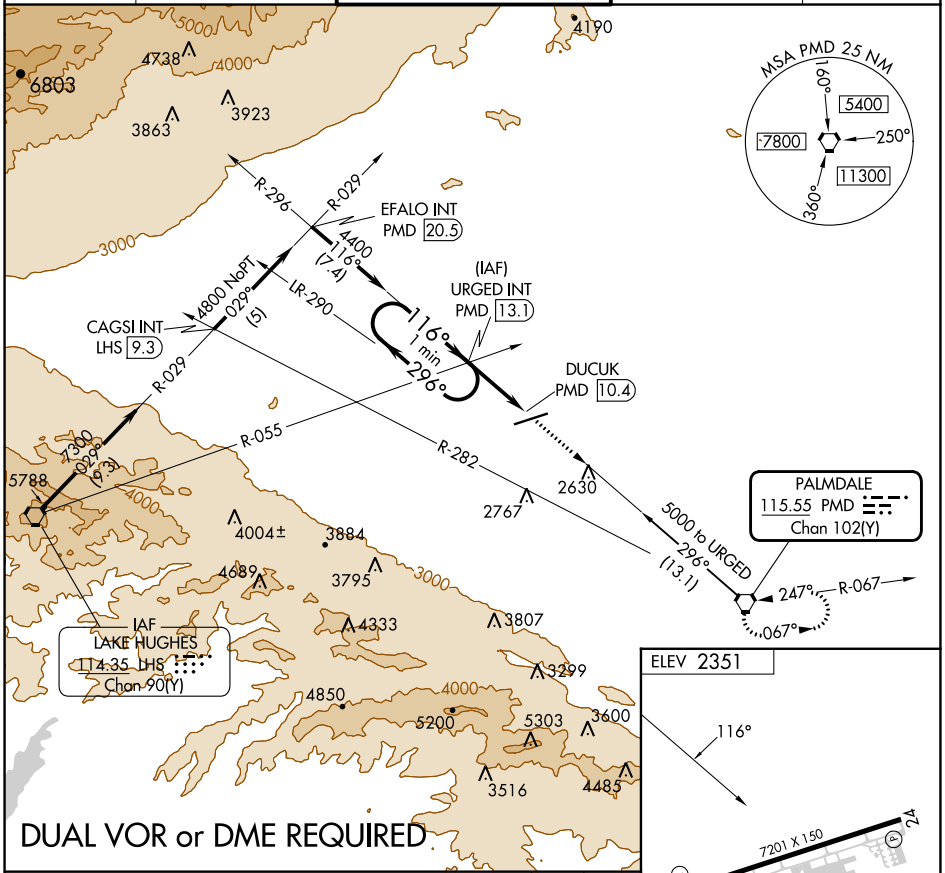
VORTAC PMD 115.55 Chan 102(Y)	APP CRS 116°	Rwy Idg TDZE Apt Elev N/A N/A 2351
---	------------------------	--

VOR-B

GENERAL WM J FOX AIRFIELD (WJF)

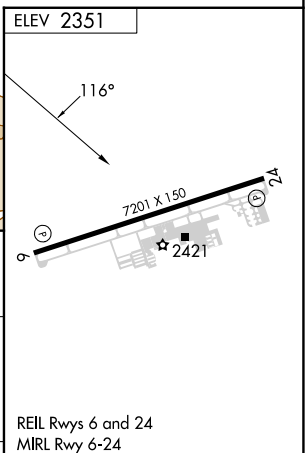
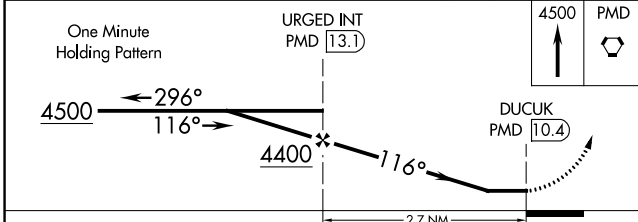
MISSIED APPROACH: Climb to 4500 direct PMD VORTAC and hold.

ATIS 126.3	JOSHUA APP CON 126.1 290.3	FOX TOWER * 118.525 (CTAF) 256.9	GND CON 121.7 256.9	UNICOM 122.95
----------------------	--------------------------------------	--	-------------------------------	-------------------------



SW-3, 22 FEB 2024 to 21 MAR 2024

SW-3, 22 FEB 2024 to 21 MAR 2024



CATEGORY	A	B	C	D	FAF to MAP 2.7 NM					
CIRCLING	3320-1¼ 969 (1000-1¼)	3320-1½ 969 (1000-1½)	3320-3	969 (1000-3)	Knots	60	90	120	150	180
					Min:Sec	2:42	1:48	1:21	1:05	0:54

VOR-B