

APP CRS	Rwy Idg	3181
109°	TDZE	998
	Apt Elev	1003

RNAV (GPS) RWY 12

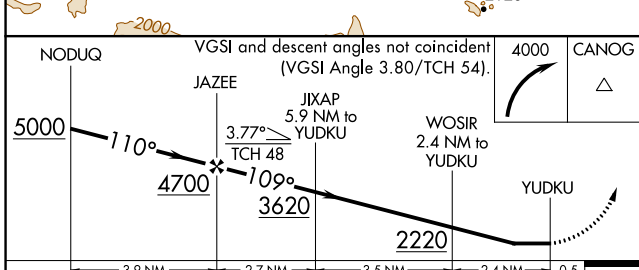
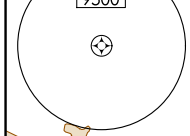
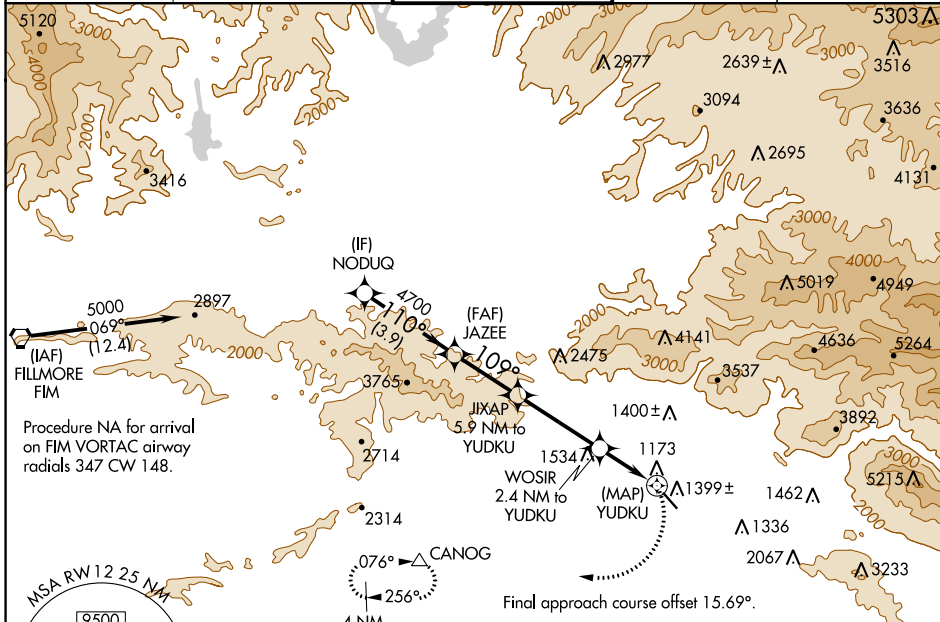
WHITEMAN (WHP)

RNP APCH.

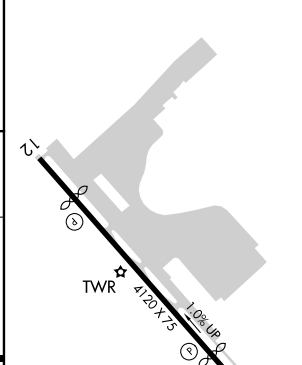
NA Procedure NA at night. When local altimeter setting not received, use Burbank altimeter setting. Rwy 12 helicopter visibility reduction below 1 SM NA.

MISSED APPROACH: Climbing right turn to 4000 direct CANOG and hold.

ATIS 132.1	SOCAL APP CON 120.4 360.6 (NORTH) 134.2 338.2 (WEST)	WHITEMAN TOWER ★ 135.0 (CTAF)	GND CON 125.0	UNICOM 122.95
----------------------	--	---	-------------------------	-------------------------



ELEV 1003	D TDZE 998
-----------	-------------------



CATEGORY	A	B	C	D
LNVA MDA	1660-1	662 (700-1)	1660-1 7/8 662 (700-1 7/8)	NA
C CIRCLING	1700-1 697 (700-1)	1860-1 1/4 857 (900-1 1/4)	2200-3 1197 (1200-3)	NA

REIL Rwy 12 and 30
MIRL Rwy 12-30

SW-3, 22 FEB 2024 to 21 MAR 2024

SW-3, 22 FEB 2024 to 21 MAR 2024

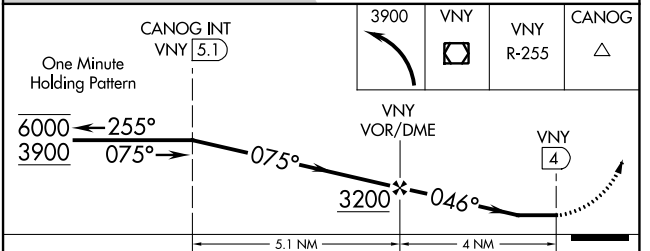
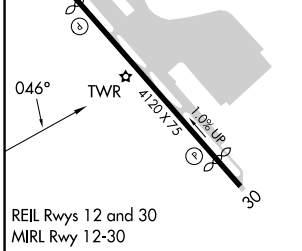
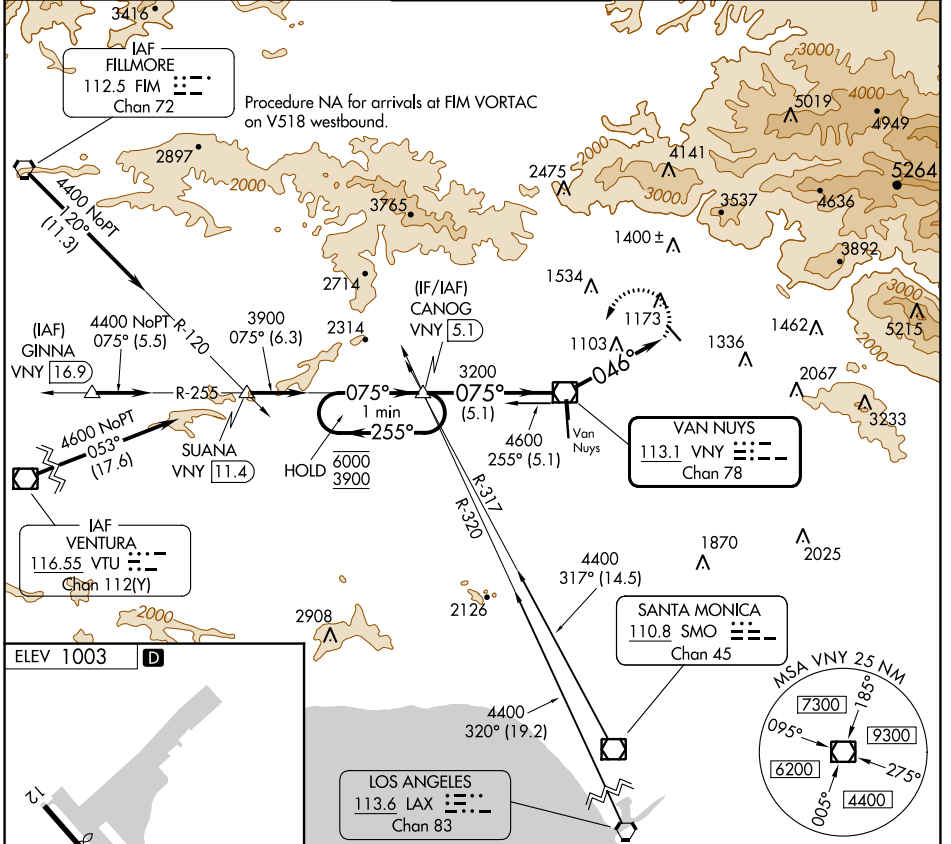
VOR/DME VNY 113.1 Chan 78	APP CRS 046°	Rwy Idg TDZE Apt Elev N/A N/A 1003
---	------------------------	--

VOR-A WHITEMAN (WHP)

⚠ When local altimeter setting not received, use Burbank altimeter setting. Procedure NA at night.

⚠ MISSED APPROACH: Climbing left turn to 3900 direct VNY VOR/DME then on VNY VOR/DME R-255 to CANOG INT/ 5.1 DME and hold.

ATIS 132.1	SOCAL APP CON 120.4 360.6 (NORTH) 134.2 338.2 (WEST)	WHITEMAN TOWER * 135.0 (CTAF)	GND CON 125.0	UNICOM 122.95
----------------------	--	---	-------------------------	-------------------------



FAF to MAP 4 NM					CATEGORY	A	B	C	D
Knots	60	90	120	150	180	1760-1	1860-1¼	2200-3	NA
Min:Sec	4:00	2:40	2:00	1:36	1:20	757 (800-1)	857 (900-1¼)	1197 (1200-3)	

SW-3, 22 FEB 2024 to 21 MAR 2024

SW-3, 22 FEB 2024 to 21 MAR 2024