

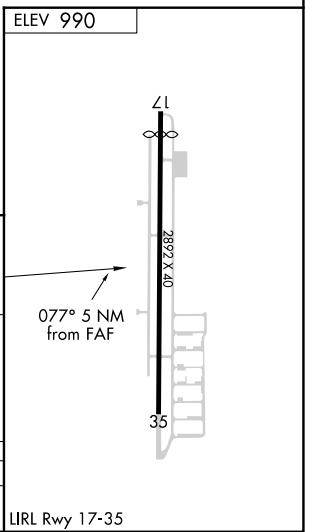
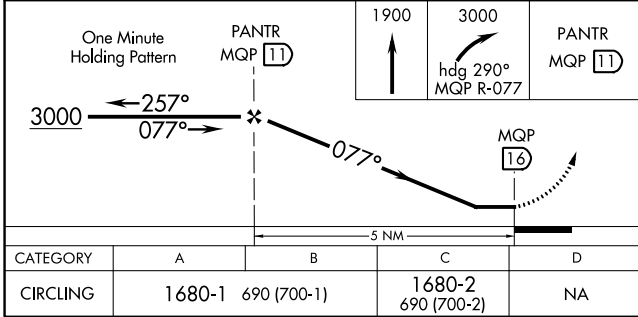
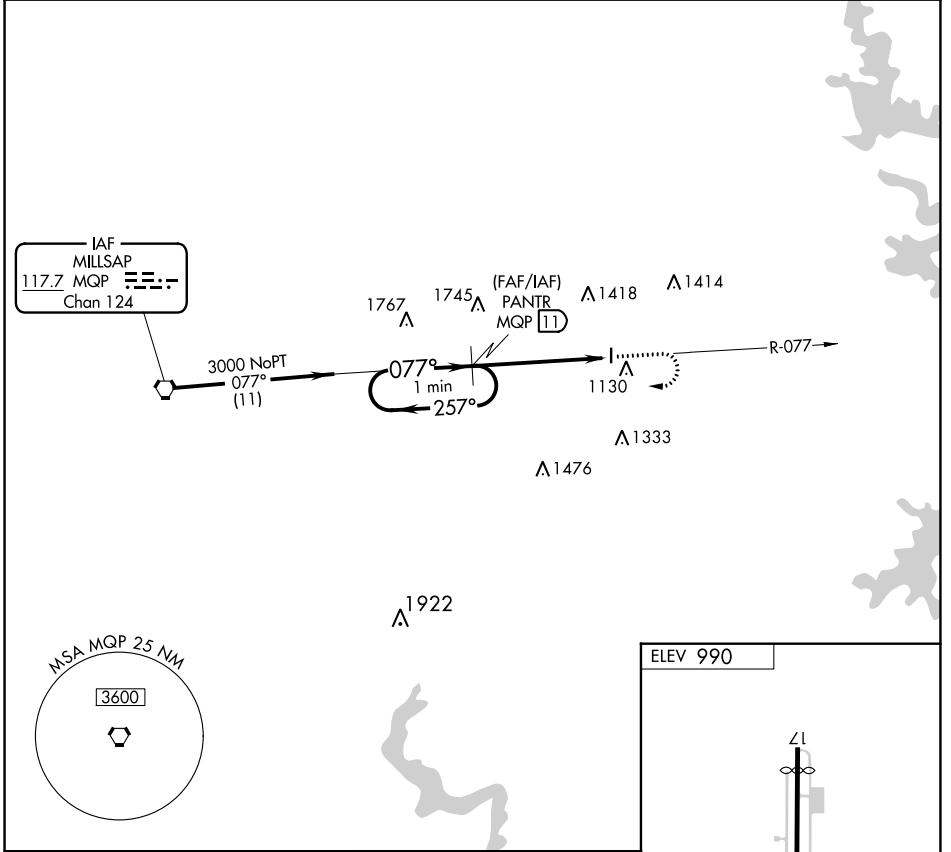
VORTAC MQP 117.7 Chan 124	APP CRS 077°	Rwy ldg TDZE Apt Elev N/A N/A 990
---	------------------------	---

VOR/DME-A

PARKER COUNTY (WEA)

▽ △ NA Use Fort Worth Meacham altimeter setting.	MISSED APPROACH: Climb to 1900 then climbing right turn to 3000 via heading 290° and MQP R-077 to PANTR and hold.
---	---

REGIONAL APP CON 135.975 379.9	UNICOM 122.7 (CTAF)
--	-------------------------------



SC-2, 17 JUN 2021 to 15 JUL 2021

SC-2, 17 JUN 2021 to 15 JUL 2021