

LOC I-VNY <b>111.3</b>	APP CRS <b>164°</b>	Rwy ldg <b>6569</b> TDZE <b>793</b> Apt Elev <b>802</b>
---------------------------	------------------------	--

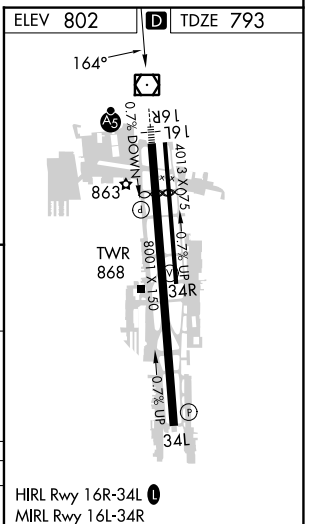
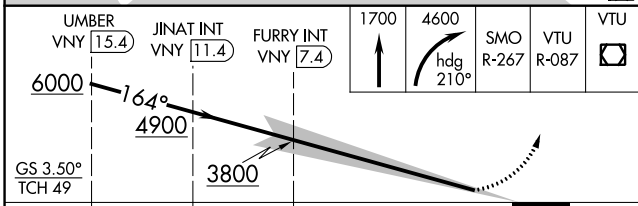
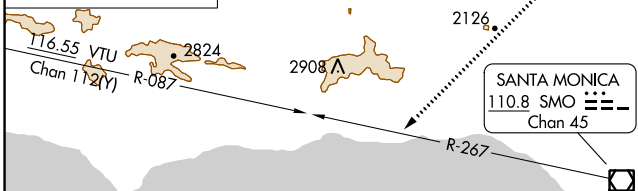
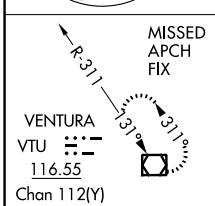
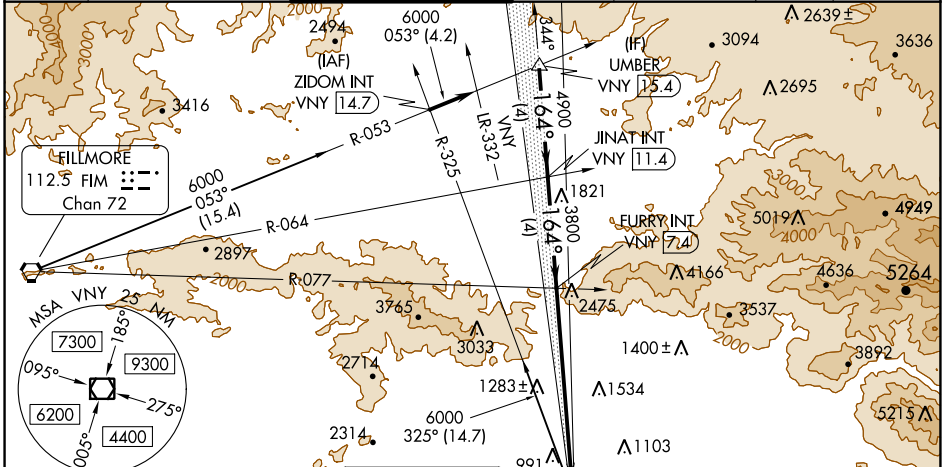
# ILS Y RWY 16R

VAN NUYS (VNY)

**▼** For inop MALSR, increase S-ILS all Cats visibility to 2 SM. When **▲** local altimeter setting not received, use Burbank altimeter setting and increase DA to 1480 feet and all Cats visibility to 1½ SM.

**MALSR** MISSED APPROACH: Climb to 1700 then climbing right turn to 4600 on heading 210° and on SMO VOR/DME R-267 and on VTU VOR/DME R-087 to VTU VOR/DME and hold.

ATIS <b>127.55</b>	SOCAL APP CON <b>120.4 360.6 (NORTH)</b> <b>134.2 338.2 (WEST)</b>	VAN NUYS TOWER * <b>119.3 (CTAF) 0 239.0</b>	GND CON <b>121.7</b>	CLNC DEL <b>126.6 239.0</b>	CPDLC	UNICOM <b>122.95</b>
-----------------------	--	---	-------------------------	--------------------------------	-------	-------------------------



CATEGORY	A	B	C	D
S-ILS 16R		1461-1½	668 (700-1½)	

SW-3, 22 FEB 2024 to 21 MAR 2024

SW-3, 22 FEB 2024 to 21 MAR 2024

LOC I-VNY	APP CRS	Rwy Idg	<b>6569</b>
<b>111.3</b>	<b>164°</b>	TDZE	<b>793</b>
		Apt Elev	<b>802</b>

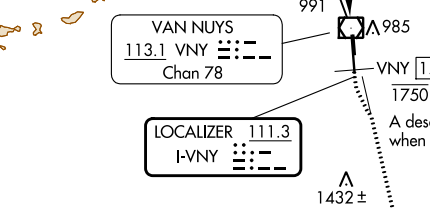
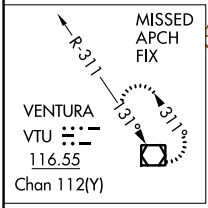
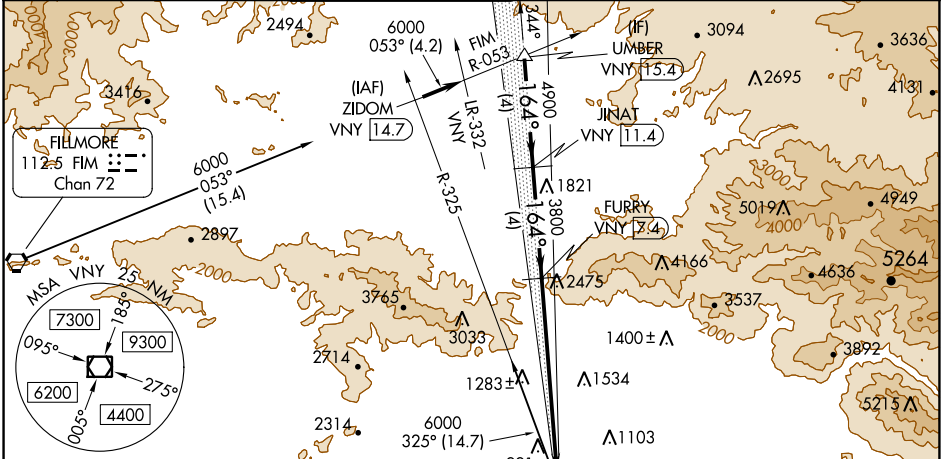
# ILS Z RWY 16R

## VAN NUYS (VNY)

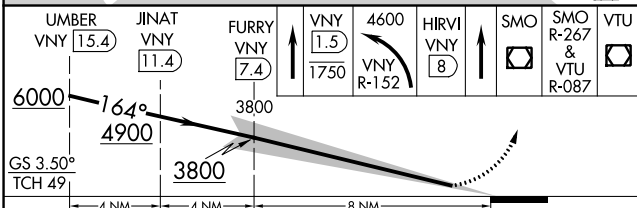
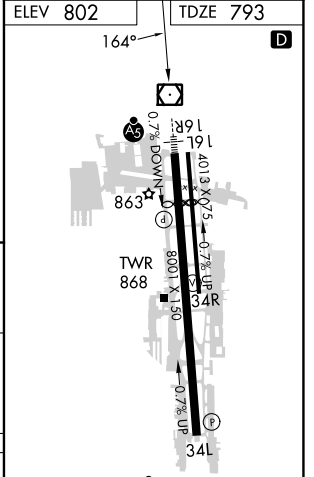
**⚠ DME required. RADAR required for monitoring of missed approach. When local altimeter setting not received, use Burbank altimeter setting and increase DA to 1114. Rwy 16R helicopter visibility reduction below RVR 4000 NA. For inop ALS, increase S-ILS 16R all Cats visibility to RVR 5000.**

**MISSED APPROACH:** Climb to cross VNY 1.5 DME south of VNY VOR/DME at or below 1750 then climbing left turn to 4600 on VNY VOR/DME R-152 to HIRVI/VNY VOR/DME 8 DME, direct SMO VOR/DME then on SMO VOR/DME R-267 then on VTU VOR/DME R-087 to VTU VOR/DME and hold.

ATIS	SOCAL APP CON	VAN NUYS TOWER ★	GND CON	CLNC DEL	CPDLC	UNICOM
<b>127.55</b>	<b>120.4 360.6 (NORTH)</b> <b>134.2 338.2 (WEST)</b>	<b>119.3 (CTAF) 0 239.0</b>	<b>121.7</b>	<b>126.6 239.0</b>		<b>122.95</b>



A descent to at or below 1750 may be required when executing an early missed approach.



CATEGORY	A	B	C	D
S-ILS 16R		1095/40	302 (300-¾)	

HIRL Rwy 16R-34L  
MIRL Rwy 16L-34R

SW-3, 22 FEB 2024 to 21 MAR 2024

SW-3, 22 FEB 2024 to 21 MAR 2024

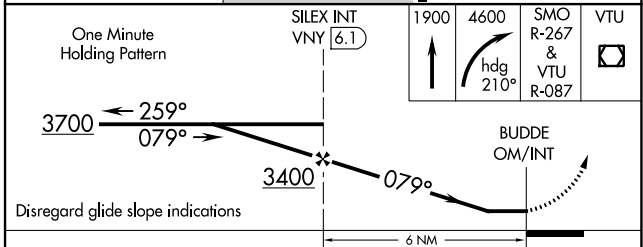
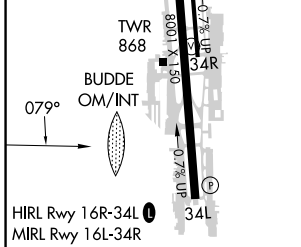
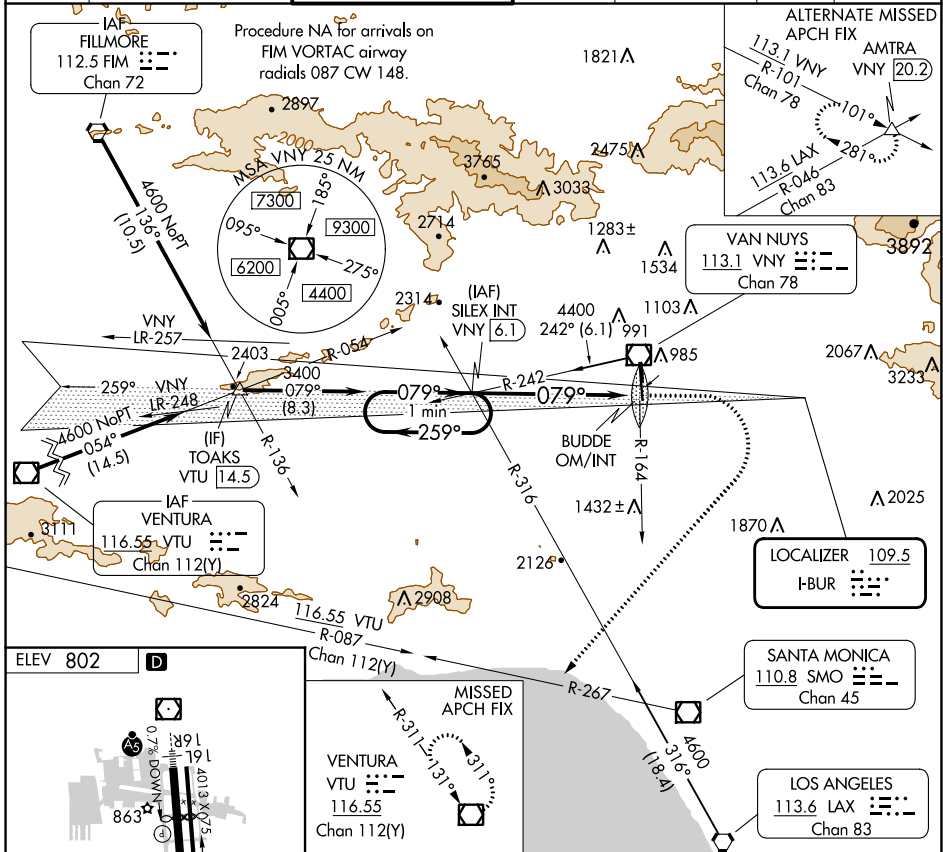
LOC I-BUR <b>109.5</b>	APP CRS <b>079°</b>	Rwy Idg TDZE Apt Elev	<b>N/A</b> <b>N/A</b> <b>802</b>
---------------------------	------------------------	--------------------------	--

**LDA-C**  
VAN NUYS (VNY)

**⚠** Circling Rwy 16L NA at night.

MISSED APPROACH: Climb to 1900 then climbing right turn to 4600 on heading 210° and on SMO VOR/DME R-267 and on VTU VOR/DME R-087 to VTU VOR/DME and hold.

ATIS <b>127.55</b>	SOCAL APP CON <b>120.4 360.6 (NORTH)</b> <b>134.2 338.2 (WEST)</b>	VAN NUYS TOWER ★ <b>119.3 (CTAF) 0 239.0</b>	GND CON <b>121.7</b>	CLNC DEL <b>126.6 239.0</b>	CPDLC	UNICOM <b>122.95</b>
-----------------------	--	---	-------------------------	--------------------------------	-------	-------------------------



FAF to MAP 6 NM					
Knots	60	90	120	150	180
Min:Sec	6:00	4:00	3:00	2:24	2:00
CATEGORY	A	B	C	D	
<b>C</b> CIRCLING	1500-1 698 (700-1)		1500-2 698 (700-2)	2060-3 1258 (1300-3)	

SW-3, 22 FEB 2024 to 21 MAR 2024

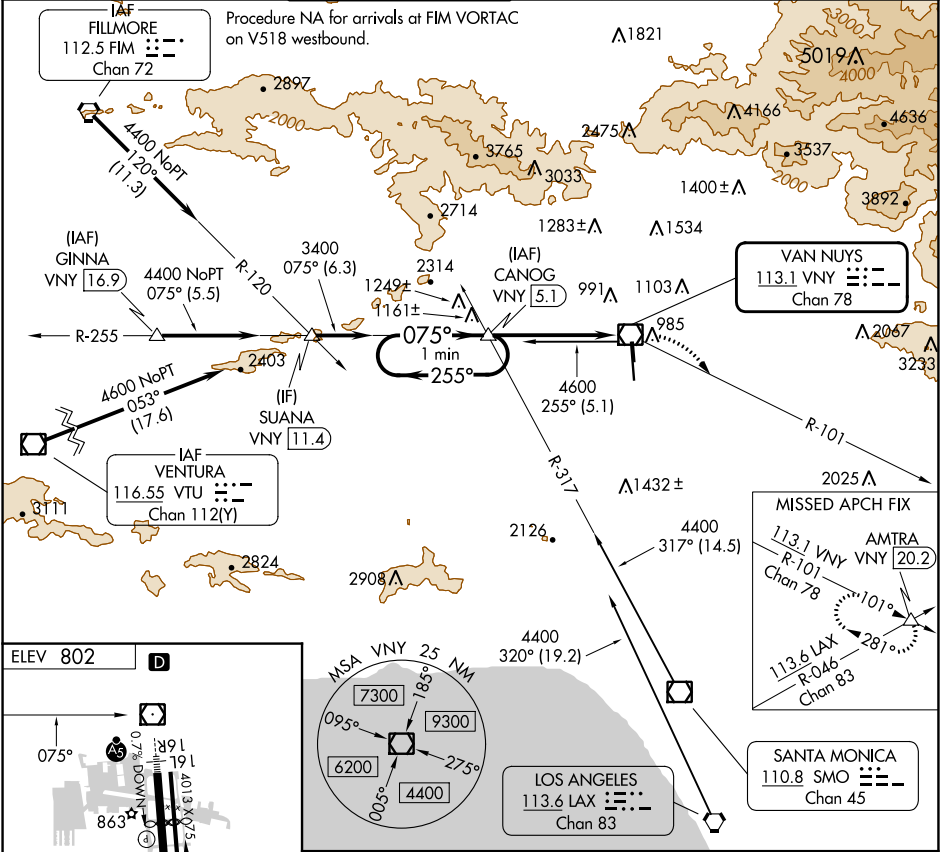
SW-3, 22 FEB 2024 to 21 MAR 2024

VOR/DME VNY <b>113.1</b> Chan 78	APP CRS <b>075°</b>	Rwy Idg TDZE Apt Elev	<b>N/A</b> <b>N/A</b> <b>802</b>
--	------------------------	-----------------------------	--

# VOR-A VAN NUYS (VNY)

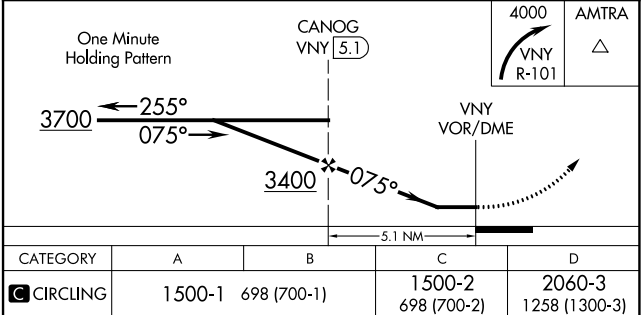
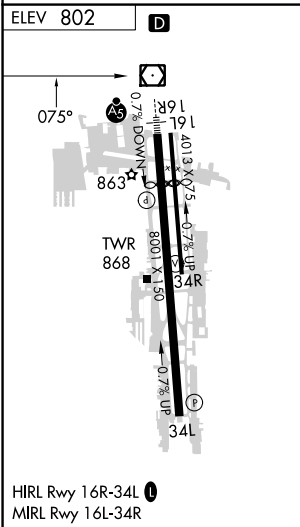
Circling Rwy 16L NA at night.	MISSED APPROACH: Climbing right turn to 4000 on VNY VOR/DME R-101 to AMTRA INT/20.2 DME and hold.
-------------------------------	---

ATIS <b>127.55</b>	SOCAL APP CON <b>120.4 360.6</b> (NORTH) <b>134.2 338.2</b> (WEST)	VAN NUYS TOWER * <b>119.3</b> (CTAF) <b>0 239.0</b>	GND CON <b>121.7</b>	CLNC DEL <b>126.6 239.0</b>	CPDLC	UNICOM <b>122.95</b>
-----------------------	--	--	-------------------------	--------------------------------	-------	-------------------------



SW-3, 22 FEB 2024 to 21 MAR 2024

SW-3, 22 FEB 2024 to 21 MAR 2024



VOR/DME VNY <b>113.1</b> Chan 78	APP CRS <b>155°</b>	Rwy Idg TDZE Apt Elev <b>N/A</b> <b>N/A</b> <b>802</b>
--	------------------------	--

# VOR-B VAN NUYS (VNY)

**MISSED APPROACH:** Climb on VNY VOR/DME R-155 to cross YITUN/VNY 1.5 DME at or below 1750 then climbing left turn to 4000 on VNY VOR/DME R-101 to AMTRA INT and hold.

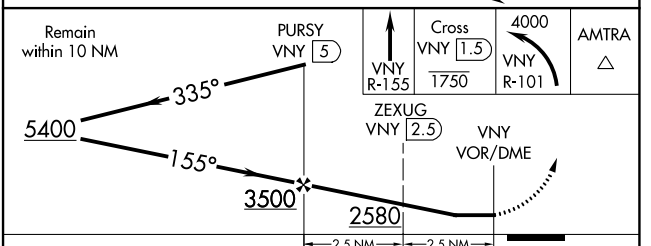
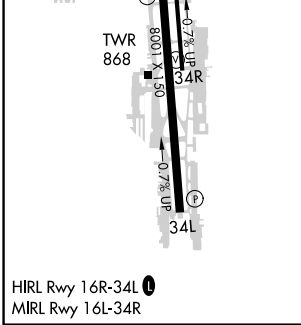
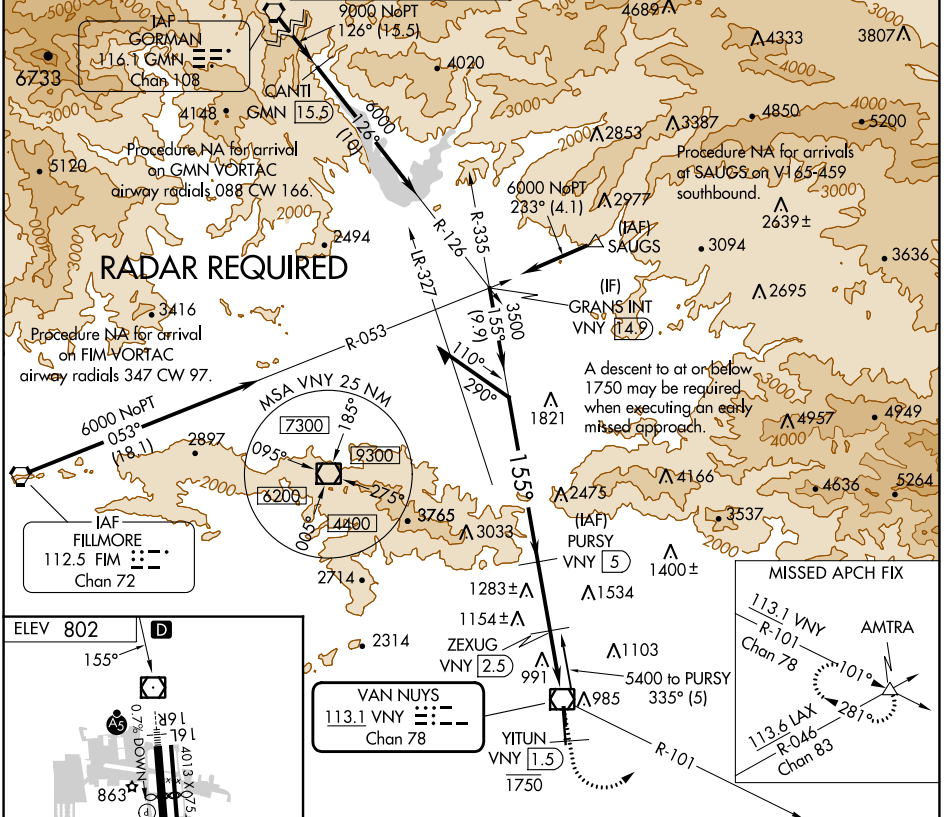
**Procedure NA for arrival on GMN VORTAC**  
airway radials 088 CW 166.

**Procedure NA for arrival on SAUGS**  
on V165-459 southbound.

**Procedure NA for arrival on FIM VORTAC**  
airway radials 347 CW 97.

**Procedure NA for arrival on VNY VORTAC**  
airway radials 088 CW 166.

ATIS <b>127.55</b>	SOCAL APP CON <b>120.4 360.6 (NORTH)</b> <b>134.2 338.2 (WEST)</b>	VAN NUYS TOWER * <b>119.3 (CTAF) 0 239.0</b>	GND CON <b>121.7</b>	CLNC DEL <b>126.6 239.0</b>	CPDLC	UNICOM <b>122.95</b>
-----------------------	--	---	-------------------------	--------------------------------	-------	-------------------------



Remain within 10 NM	PURSY VNY (5)	Cross VNY (1.5) 1750	4000 VNY R-101	AMTRA △
5400	335°	ZEXUG VNY (2.5)	VNY VOR/DME	
3500	155°			
		2580		
CATEGORY	A	B	C	D
<b>C</b> CIRCLING	1660-1¼ 858 (900-1¼)		1660-2½ 858 (900-2½)	1740-3 938 (1000-3)

SW-3, 22 FEB 2024 to 21 MAR 2024

SW-3, 22 FEB 2024 to 21 MAR 2024