

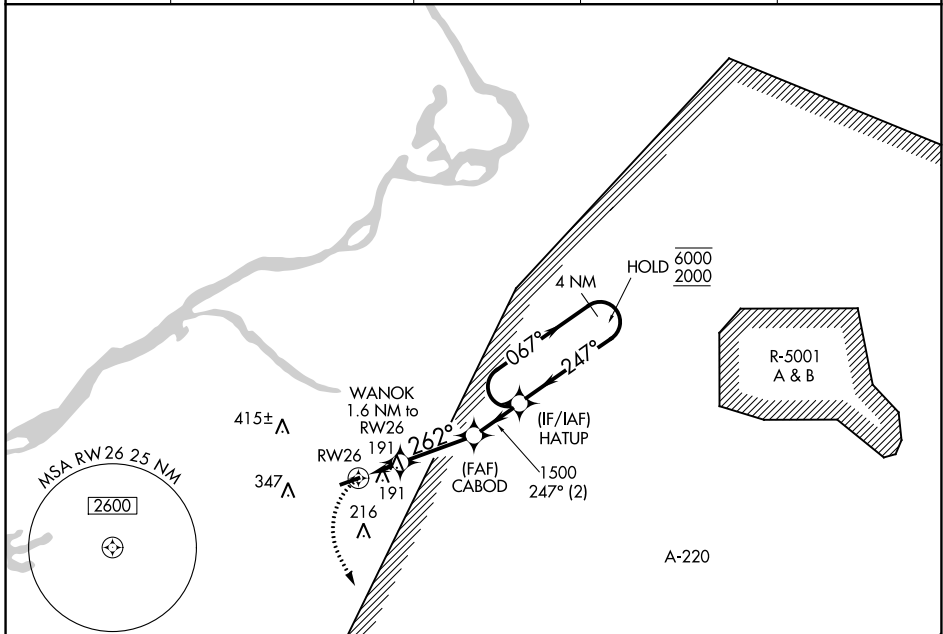
APP CRS	Rwy Idg	3881
262°	TDZE	53
	Apt Elev	53

RNAV (GPS) RWY 26

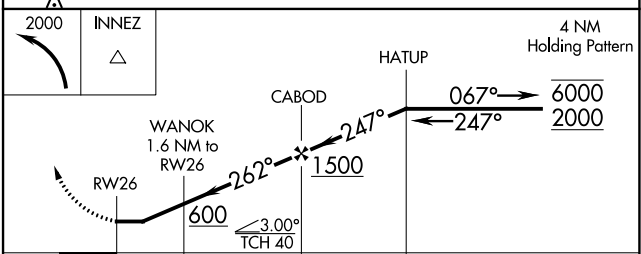
SOUTH JERSEY RGNL (VAY)

RNP APCH.		MISSED APPROACH: Climbing left turn to 2000 direct INNEZ and hold.		
<p>▽ Rwy 26 helicopter visibility reduction below 1 SM NA. Procedure NA at night.</p>				

ASOS	MC GUIRE APP CON	GCO	UNICOM	
119.325	126.475 363.8	121.725	122.8 (CTAF)	123.3



ELEV 53	TDZE 53
---------	---------



MIRL Rwy 8-26
REIL Rwy 8 and 26

CATEGORY	A	B	C	D
LNAV MDA	480-1	427 (500-1)	NA	
CIRCLING	520-1	467 (500-1)	NA	

NE-2, 22 APR 2021 to 20 MAY 2021

NE-2, 22 APR 2021 to 20 MAY 2021

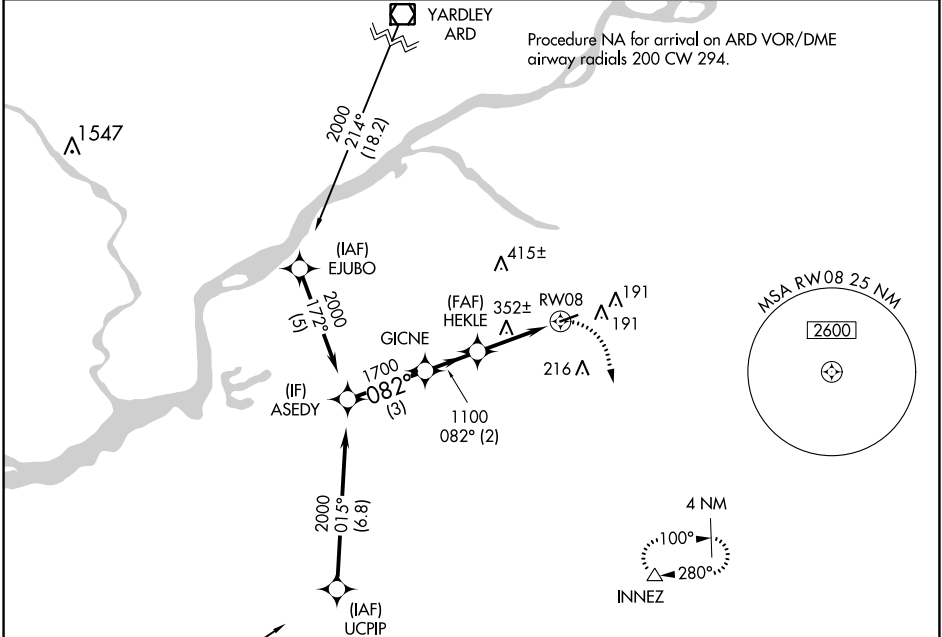
WAAS CH 69324 W08A	APP CRS 082°	Rwy Idg TDZE Apt Elev	3881 50 53
----------------------------------------	------------------------	-----------------------------	---------------------------------------

RNAV (GPS) RWY 8

SOUTH JERSEY RGNL (VAY)

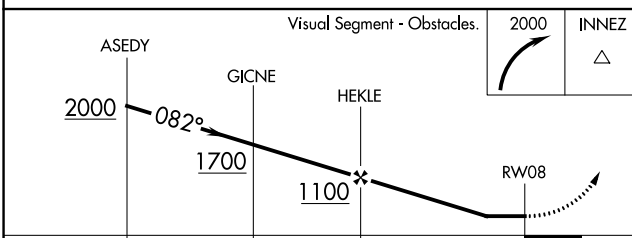
RNP APCH.	MISSED APPROACH: Climbing right turn to 2000 direct INNEZ and hold.
<p>▼ Procedure NA at night.</p> <p>▲ Rwy 8 helicopter visibility reduction below 1 SM NA.</p>	

ASOS 119.325	MC GUIRE APP CON 126.475 363.8	GCO 121.725	UNICOM 122.8 (CTAF)	123.3
------------------------	------------------------------------------	-----------------------	-------------------------------	--------------

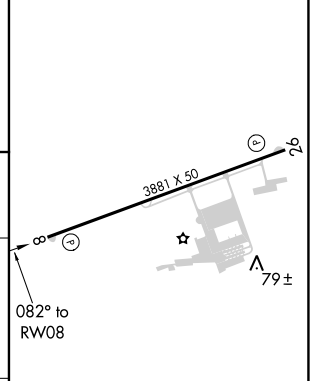


Procedure NA for arrival on OOD VORTAC airway radials 336 CW 154.

Procedure NA for arrival on ARD VOR/DME airway radials 200 CW 294.



ELEV 53	TDZE 50
---------	---------



CATEGORY	A	B	C	D
LP MDA	660-1	610 (700-1)		NA
LNAV MDA	660-1	610 (700-1)		NA
CIRCLING	660-1	607 (700-1)		NA

MRL Rwy 8-26

REIL Rws 8 and 26

NE-2, 22 APR 2021 to 20 MAY 2021

NE-2, 22 APR 2021 to 20 MAY 2021

VORTAC RBV 113.8 Chan 85	APP CRS 236°	Rwy Idg 3881 TDZE 53 Apt Elev 53
----------------------------------------------	------------------------	-------------------------------------------------------------

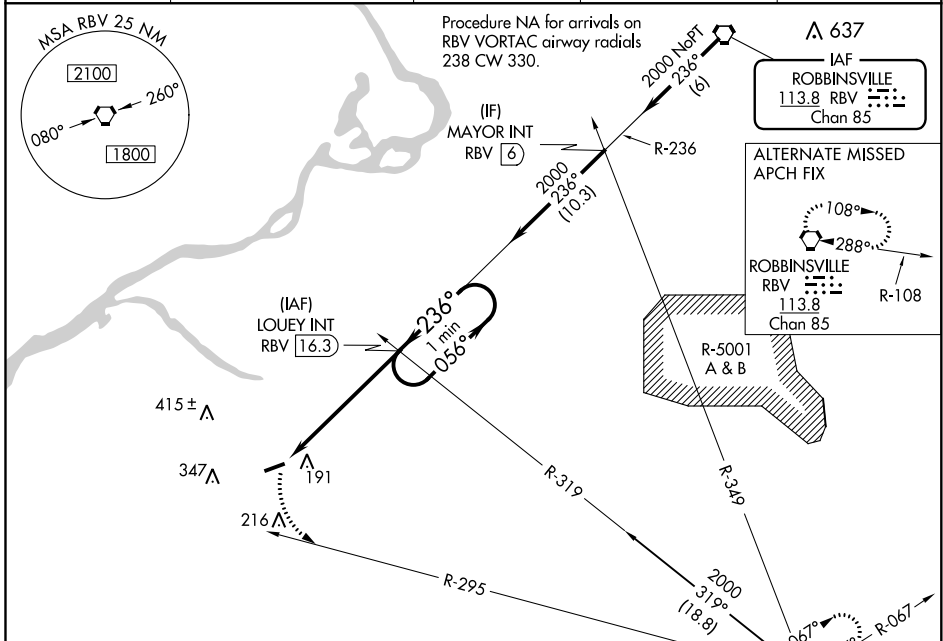
VOR RWY 26

SOUTH JERSEY RGNL (VAY)

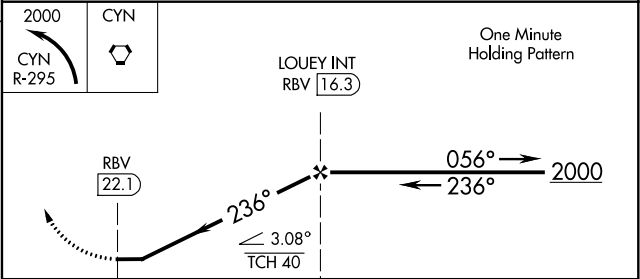
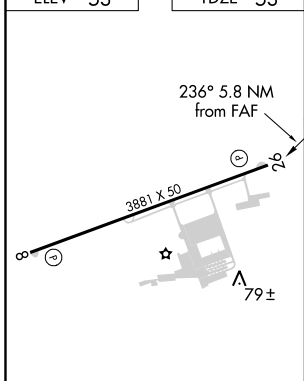
⚠ When local altimeter setting not received, use Northeast Philadelphia altimeter setting and increase all MDA 40 feet. Procedure NA at night. Helicopter visibility reduction below 1 SM NA.

MISSED APPROACH: Climbing left turn to 2000 on CYN VORTAC R-295 to CYN VORTAC and hold.

ASOS 119.325	MC GUIRE APP CON 126.475 363.8	GCO 121.725	UNICOM 122.8 (CTAF)	123.3 0
------------------------	------------------------------------------	-----------------------	-------------------------------	-----------------------



ELEV 53	TDZE 53
----------------	----------------



FAF to MAP 5.8 NM					
Knots	60	90	120	150	180
Min:Sec	5:48	3:52	2:54	2:19	1:56

CATEGORY	A	B	C	D
S-26	640-1	587 (600-1)		NA
CIRCLING	640-1	640-1 1/4		NA
	587 (600-1)	587 (600-1 1/4)		

NE-2, 22 APR 2021 to 20 MAY 2021

NE-2, 22 APR 2021 to 20 MAY 2021