


LOC/DME I-UNV	APP CRS	Rwy Idg	6701
111.7	244°	TDZE	1218
Chan 54		Apt Elev	1231

ILS or LOC RWY 24

STATE COLLEGE RGNL (UNV)

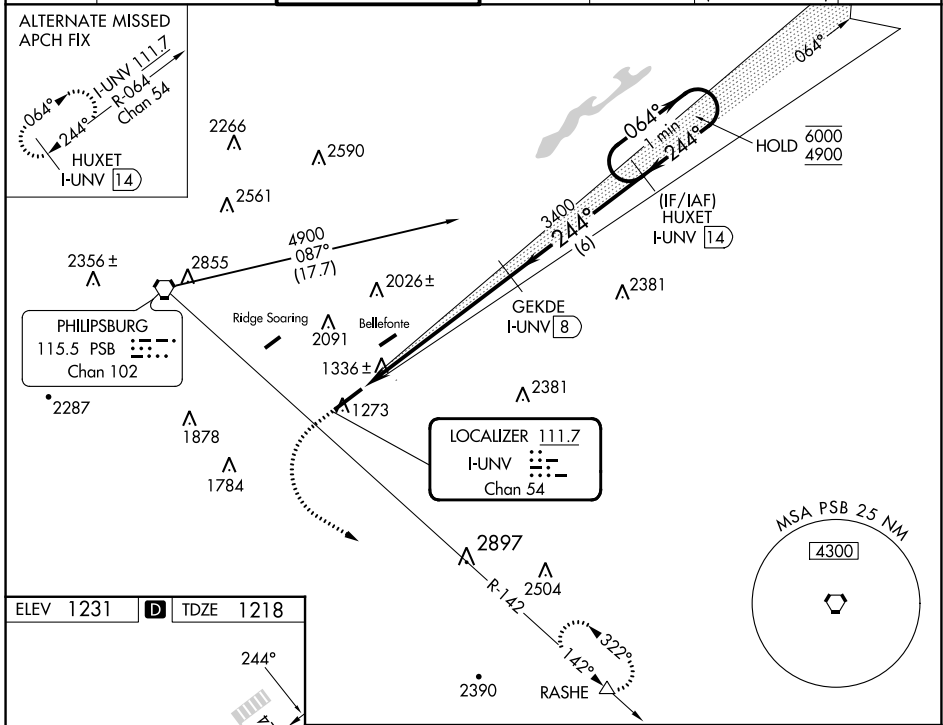
DME required.

⚠ Circling NA northwest of Rwy 6-24.
 * RVR 1800 authorized with use of FD or AP or HUD to DA (NA when using Clearfield altimeter setting).

MALSR 

MISSED APPROACH: Climb to 2600, then climbing left turn to 4100 on heading 112°, and PSB VORTAC R-142 to RASHE and hold.

D-ATIS	NEW YORK CENTER	UNIVERSITY PARK ★	GND CON	CLNC DEL	CLNC DEL	UNICOM
127.65	134.8 338.3	128.475 (CTAF) 0	125.725	125.725	118.55 (When twr closed)	122.95



ELEV	1231	D	TDZE	1218
------	------	----------	------	------

REIL Rwy 6 **0**
 HIRL Rwy 6-24 **0**

FAF to MAP 6.8 NM

Knots	60	90	120	150	180
Min:Sec	6:48	4:32	3:24	2:43	2:16

	2600	4100	RASHE	HUXET I-UNV 14	One Minute Holding Pattern
	↑	hdg 112°	PSB R-142	△	
			Gekde I-UNV 8		
					GS 3.00° TCH 55
CATEGORY	A		B		D
S-ILS 24 *	1418/24		200 (200-½)		
S-LOC 24	1640/24	422 (500-½)	1640/40	422 (500-¾)	
CIRCLING	1640-1 409 (500-1)	1700-1 469 (500-1)	1940-2 709 (800-2)	2560-3 1329 (1400-3)	

WAAS CH 61309 W24A	APP CRS 244°	Rwy Idg TDZE Apt Elev	6701 1218 1231
--	------------------------	-----------------------------	---

RNAV (GPS) RWY 24

STATE COLLEGE RGNL (UNV)

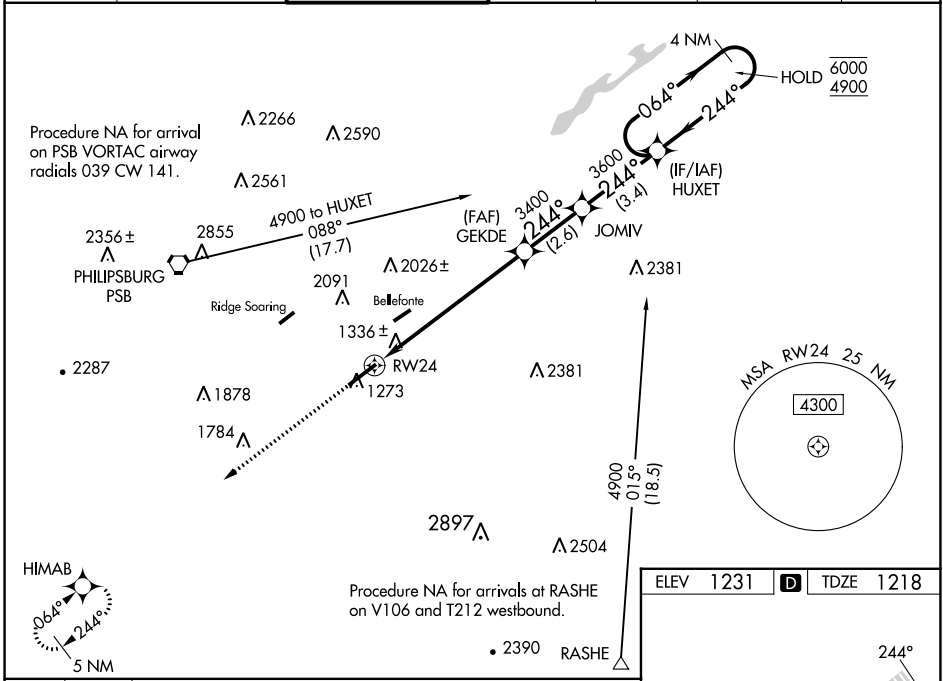
RNP APCH - GPS.

⚠ Circling NA northwest of Rwy 6-24. For uncompensated Baro-VNAV systems, LNAV/VNAV NA below -17°C or above 54° C. For inop ALS, increase LNAV/VNAV all Cats visibility to RVR 6000.
 * RVR 1800 authorized with use of FD or AP or HUD to DA (NA when using Clearfield altimeter setting)



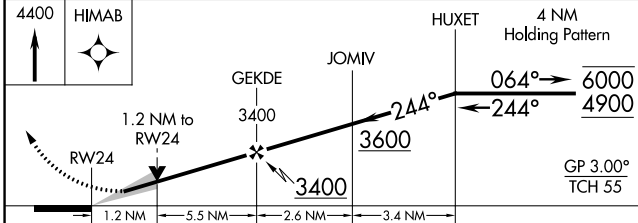
MISSED APPROACH:
Climb to 4400 direct HIMAB and hold, continue climb-in-hold to 4400.

D-ATIS 127.65	NEW YORK CENTER 134.8 338.3	UNIVERSITY PARK ★ 128.475 (CTAF) 0	GND CON 125.725	CLNC DEL 125.725	CLNC DEL 118.55 (When twr closed)	UNICOM 122.95
-------------------------	---------------------------------------	---	---------------------------	----------------------------	--	-------------------------



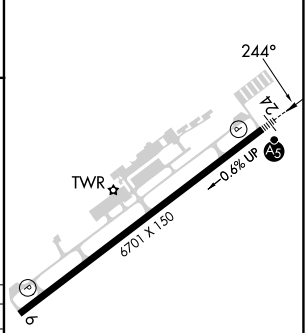
NE-4, 22 FEB 2024 to 21 MAR 2024

NE-4, 22 FEB 2024 to 21 MAR 2024



ELEV 1231	D	TDZE 1218
-----------	----------	-----------

CATEGORY	A	B	C	D
LPV DA*	1418/24		200 (200-½)	
LNAV/VNAV DA	1619/40		401 (400-¾)	
LNAV MDA	1640/24	422 (500-½)	1640/40	422 (500-¾)
CIRCLING	1640-1 409 (500-1)	1700-1 469 (500-1)	1940-2 709 (800-2)	2560-3 1329 (1400-3)



REIL Rwy 6 **0**
HIRL Rwy 6-24 **0**

WAAS CH 87109 W06A	APP CRS 064°	Rwy Idg TDZE Apt Elev	6701 1231 1231
--	------------------------	-----------------------------	---

RNAV (GPS) RWY 6

STATE COLLEGE RGNL (UNV)

RNP APCH - GPS.

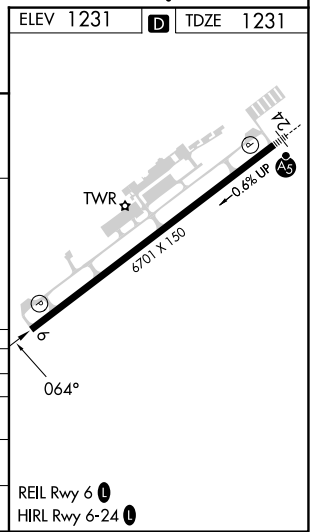
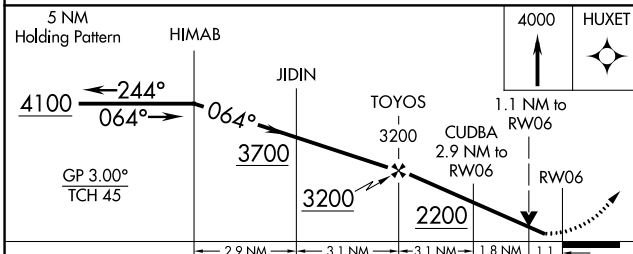
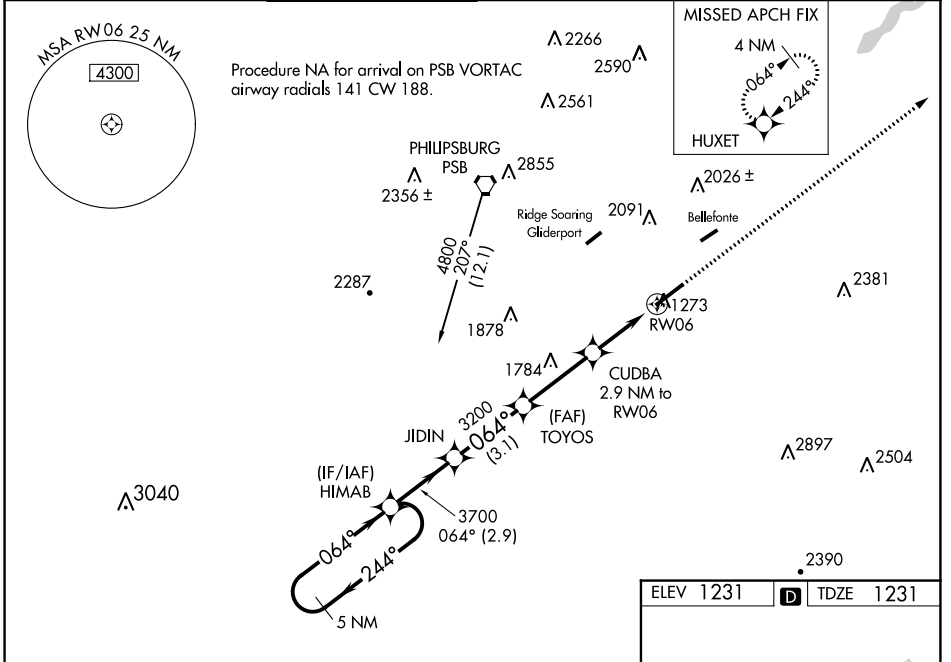
For uncompensated Baro-VNAV systems, LNAV/VNAV NA below -17°C or above 54°C.

⚠ Circling NA NW of Rwy 6-24. Baro-VNAV and VDP NA when using Clearfield altimeter setting.

⚠ When local altimeter setting not received, use Clearfield altimeter setting: increase LPV DA to 1537 feet, LNAV/VNAV DA to 1626 feet and all visibilities ½ SM; increase all MDAs 120 feet and visibility LNAV Cats C/D ¾ SM and Circling Cat C ½ SM.

MISSED APPROACH: Climb to 4000 direct HUXET and hold.

D-ATIS 127.65	NEW YORK CENTER 134.8 338.3	UNIVERSITY PARK ★ 128.475 (CTAF) 0	GND CON 125.725	CLNC DEL 125.725	CLNC DEL 118.55 (When tower closed)	UNICOM 122.95
-------------------------	---------------------------------------	---	---------------------------	----------------------------	--	-------------------------



CATEGORY	A	B	C	D
LPV DA		1431-¾	200 (200-¾)	
LNAV/VNAV DA		1520-1	289 (300-1)	
LNAV MDA	1640-1	409 (500-1)	1640-1⅛	409 (500-1⅛)
CIRCLING	1640-1 409 (500-1)	1700-1 469 (500-1)	1940-2 709 (800-2)	2580-3 1349 (1400-3)

NE-4, 22 FEB 2024 to 21 MAR 2024

NE-4, 22 FEB 2024 to 21 MAR 2024