

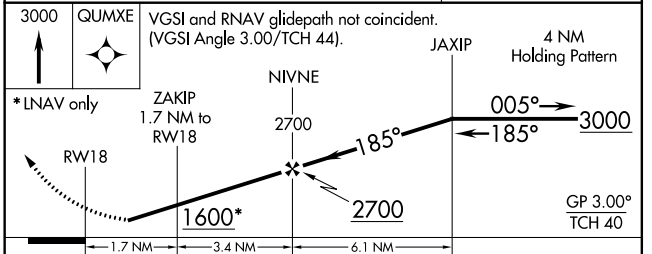
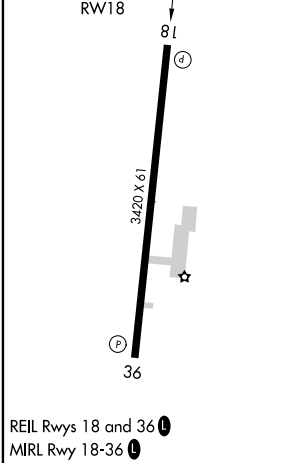
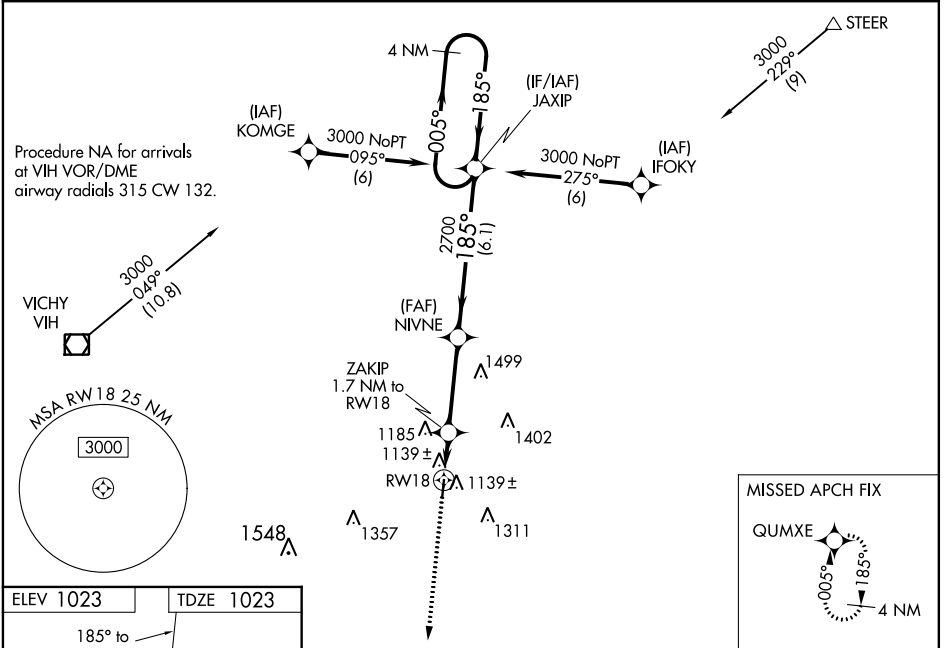
WAAS CH 40220 W18A	APP CRS 185°	Rwy Idg TDZE Apt Elev	3420 1023 1023
--	------------------------	-----------------------------	---

RNAV (GPS) RWY 18

CUBA MUNI (UBX)

RNP APCH.	<p>⚠ NA Circling NA for Cat B east of Rwy 18-36. Baro-VNAV NA. Use Rolla/Vichy altimeter setting; when not received, use Fort Leonard Wood altimeter setting and increase all DA 54 feet and all MDA 60 feet; increase LPV Cat A/B and LNAV/VNAV Cat A/B visibilities ¼ SM. Rwy 18 helicopter visibility reduction below ¼ SM NA. Circling Rwy 36 NA at night.</p>	<p>MISSED APPROACH: Climb to 3000 direct QUMXE and hold.</p>

VIH ASOS 119.025	KANSAS CITY CENTER 128.35 284.675	UNICOM 122.8 (CTAF) 0
----------------------------	---	---------------------------------



CATEGORY	A	B	C	D
LPV DA	1329-1	306 (400-1)		NA
LNAV/VNAV DA	1357-1½	334 (400-1½)		NA
LNAV MDA	1460-1	437 (500-1)		NA
C CIRCLING	1580-1	557 (600-1)		NA

NC-3, 11 AUG 2022 to 08 SEP 2022

NC-3, 11 AUG 2022 to 08 SEP 2022

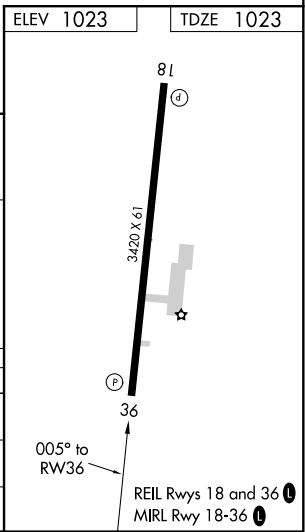
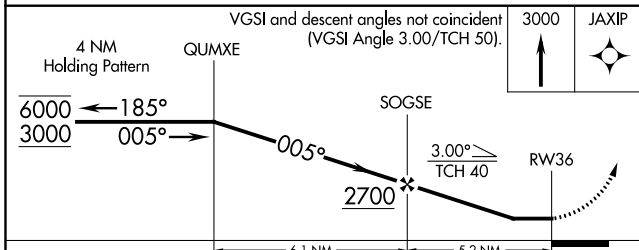
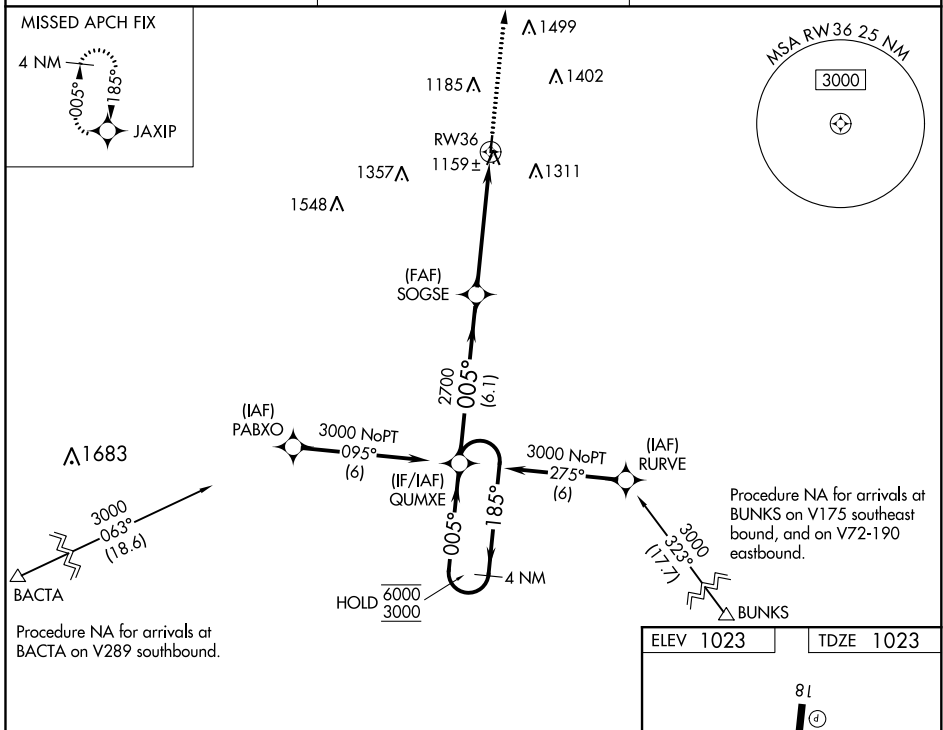
WAAS CH 70543 W36A	APP CRS 005°	Rwy Idg TDZE Apt Elev	3420 1023 1023
---------------------------------	------------------------	-----------------------------	---

RNAV (GPS) RWY 36

CUBA MUNI (UBX)

RNP APCH - GPS	<p>Procedure NA at night. Rwy 36 helicopter visibility reduction below 1 SM NA. Use Rolla/Vichy altimeter setting; when not received, use Fort Leonard Wood altimeter setting, increase all MDAs 60 feet and increase Cat B Circling visibility 1/4 SM.</p>	<p>MISSED APPROACH: Climb to 3000 direct JAXIP and hold.</p>
----------------	--	---

VIH ASOS 119.025	KANSAS CITY CENTER 128.35 284.675	UNICOM 122.8 (CTAF) 0
----------------------------	---	---------------------------------



CATEGORY	A	B	C	D
LP MDA	1480-1	457 (500-1)		NA
LNAV MDA	1480-1	457 (500-1)		NA
CIRCLING	1560-1 537 (600-1)	1780-1 757 (800-1)		NA

NC-3, 11 AUG 2022 to 08 SEP 2022

NC-3, 11 AUG 2022 to 08 SEP 2022