

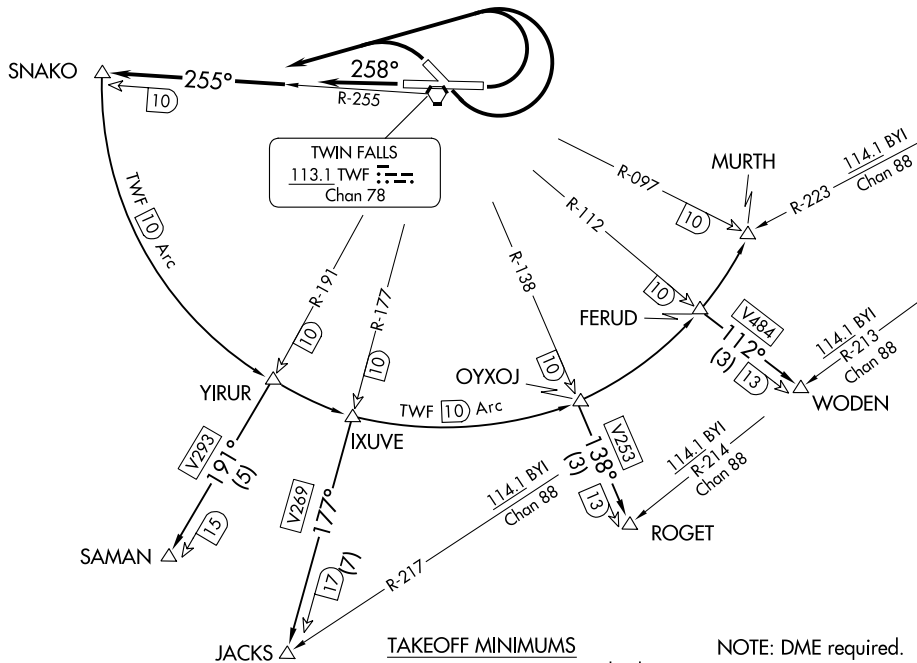
SNAKO THREE DEPARTURE

AL-885 (FAA)

TWIN FALLS, IDAHO

TWIN FALLS DEP CON*
126.7 353.75
SALT LAKE CENTER
118.05

NOTE: ROGET Transition requires minimum climb of 290' per NM to 7600'.
NOTE: MURTH Transition requires minimum climb of 295' per NM to 15000'.
NOTE: SAMAN Transition requires minimum climb of 254' per NM to 10600'.
NOTE: JACKS Transition requires minimum climb of 292' per NM to 13000'.



NW-1, 22 FEB 2024 to 21 MAR 2024

NW-1, 22 FEB 2024 to 21 MAR 2024

DEPARTURE ROUTE DESCRIPTION

TAKEOFF RUNWAYS 8, 30 and 12: Climbing left turn to intercept TWF R-255 to SNAKO, thence. . .

TAKEOFF RUNWAY 26: Climb heading 258° to intercept TWF R-255 to SNAKO, thence. . .
. . . (transition) expect filed altitude 10 minutes after departure.

JACKS TRANSITION (SNAKO3.JACKS): Twf over SNAKO on TWF VORTAC 10 DME Arc to IXUVE, then on V269 to JACKS INT.

MURTH TRANSITION (SNAKO3.MURTH): From over SNAKO on TWF VORTAC 10 DME Arc to MURTH INT.

ROGET TRANSITION (SNAKO3.ROGET): From over SNAKO on TWF VORTAC 10 DME Arc to OYXOJ then on V253 to ROGET INT.

SAMAN TRANSITION (SNAKO3.SAMAN): From over SNAKO on TWF VORTAC 10 DME Arc to YIRUR then on V293 to SAMAN.

WODEN TRANSITION (SNAKO3.WODEN): From over SNAKO on TWF VORTAC 10 DME Arc to FERUD then on V484 to WODEN INT.

SNAKO THREE DEPARTURE