

TITUSVILLE, FLORIDA

AL-8000 (FAA)

23054

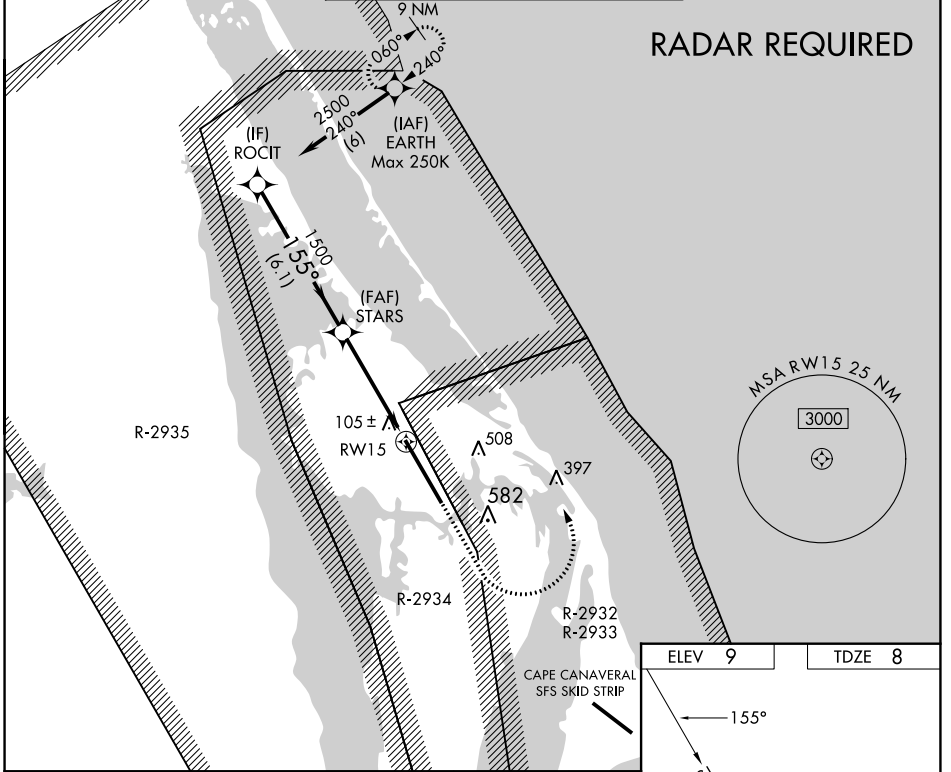
WAAS CH 50534 W15A	APP CRS 155°	Rwy Idg 15001 TDZE 8 Apt Elev 9
--	------------------------	--

RNAV (GPS) RWY 15

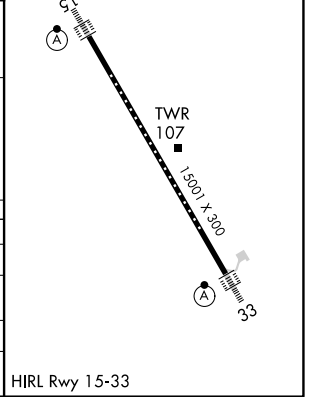
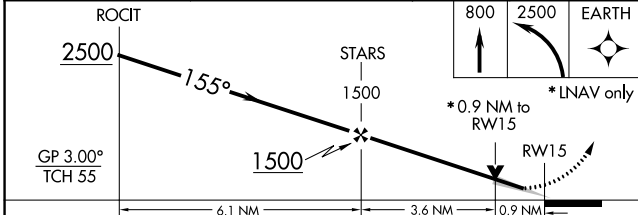
SPACE FLORIDA LAUNCH AND LANDING FACILITY (TTS)

<p>For uncompensated Baro-VNAV systems, LNAV/VNAV NA below -15°C (5°F) or above 54°C (130°F). DME/DME RNP-0.3 NA. Inop table does not apply.</p>	ALS-F-2	MISSED APPROACH: Climb to 800, then climbing left turn to 2500 direct EARTH and hold.

ORLANDO APP CON 134.95 281.425	NASA TOWER ★ 128.55 (CTAF) 284.0	GND CON 121.75
--	--	--------------------------



ELEV 9	TDZE 8
--------	--------



CATEGORY	A	B	C	D	E
LPV DA		208-1	200 (200-1)		
LNAV/VNAV DA		286-1	278 (300-1)		
LNAV MDA		360-1	352 (400-1)		
CIRCLING	420-1 411 (500-1)	460-1 451 (500-1)	940-2¾ 931 (1000-2¾)	940-3	931 (1000-3)

TITUSVILLE, FLORIDA
Amdt 1A 25MAY17

SPACE FLORIDA LAUNCH AND LANDING FACILITY (TTS)
28°37'N-80°42'W
RNAV (GPS) RWY 15

SE-3, 22 FEB 2024 to 21 MAR 2024

SE-3, 22 FEB 2024 to 21 MAR 2024

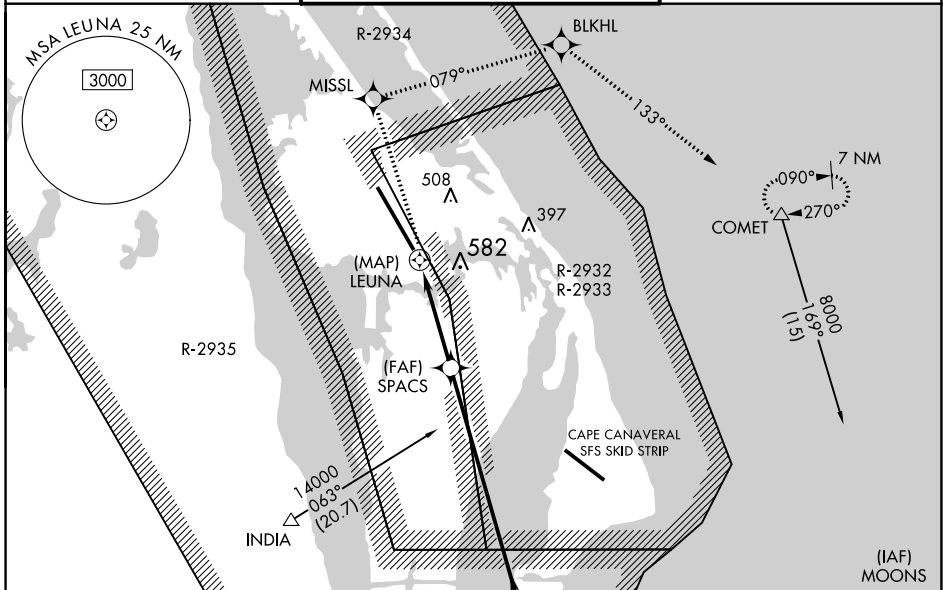
APP CRS	Rwy Idg	15001
349°	TDZE	9
	Apt Elev	9

RNAV (GPS) RWY 33

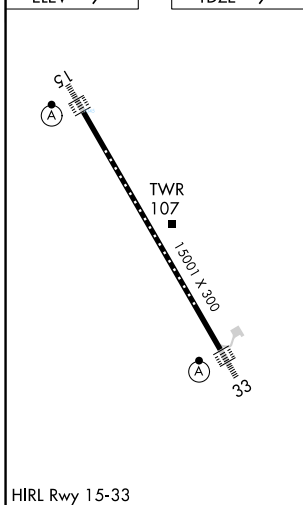
SPACE FLORIDA LAUNCH AND LANDING FACILITY (TTS)

RNP APCH-GPS.		ALSF-2	MISSED APPROACH: Climb to 8000 direct MISSL and right turn on track 079° to BLKHL and on track 133° to COMET and hold, continue climb-in-hold to 8000.
<p>Rwy 33 helicopter visibility reduction below 1 SM NA. Inop table does not apply. Use Melbourne altimeter setting.</p>			

ORLANDO APP CON 134.95 281.425	NASA TOWER ★ 128.55 (CTAF) 284.0	GND CON 121.75
--	--	--------------------------



ELEV 9	TDZE 9
--------	--------



8000	MISSL	BLKHL	COMET	ORRBT
↑				
		tr 079°	tr 133°	

CATEGORY	A	B	C	D	E
LNAV MDA	540-1 530 (600-1)		540-1¼ 530 (600-1¼)		
CIRCLING	540-1	531 (600-1)	1020-3		1011 (1100-3)

SE-3, 22 FEB 2024 to 21 MAR 2024

SE-3, 22 FEB 2024 to 21 MAR 2024