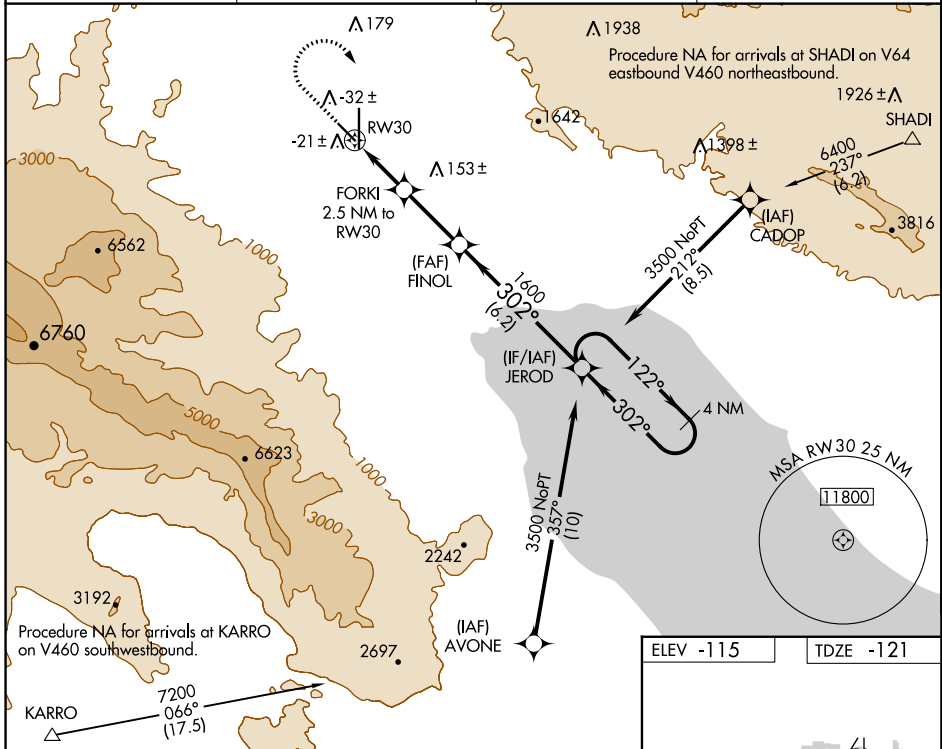


WAAS CH 77941 W30A	APP CRS 302°	Rwy Idg TDZE Apt Elev	4995 -121 -115
--	------------------------	-----------------------------	---

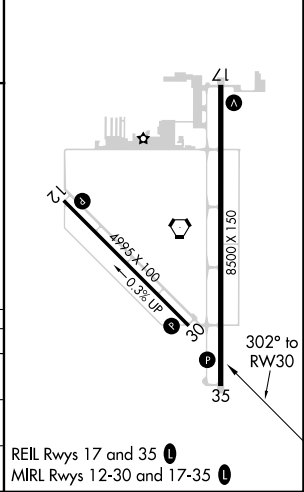
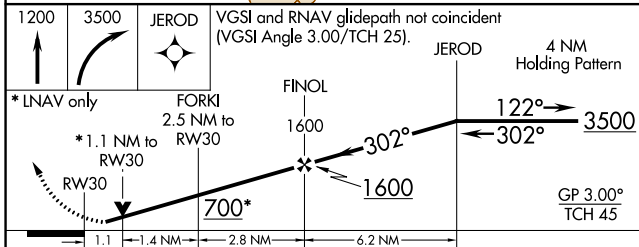
RNAV (GPS) RWY 30

JACQUELINE COCHRAN RGNL (TRM)

RNP APCH.		MISSED APPROACH: (Do not exceed 230K until JEROD) Climb to 1200 then climbing right turn to 3500 direct JEROD and hold.	
<p>▼ ▲ Rwy 30 helicopter visibility reduction below 3/4 SM NA.</p>		ASOS 118.325	SOCAL APP CON 135.275 251.1
		CLNC DEL 120.225	UNICOM 123.0 (CTAF) 0



SW-3, 22 FEB 2024 to 21 MAR 2024



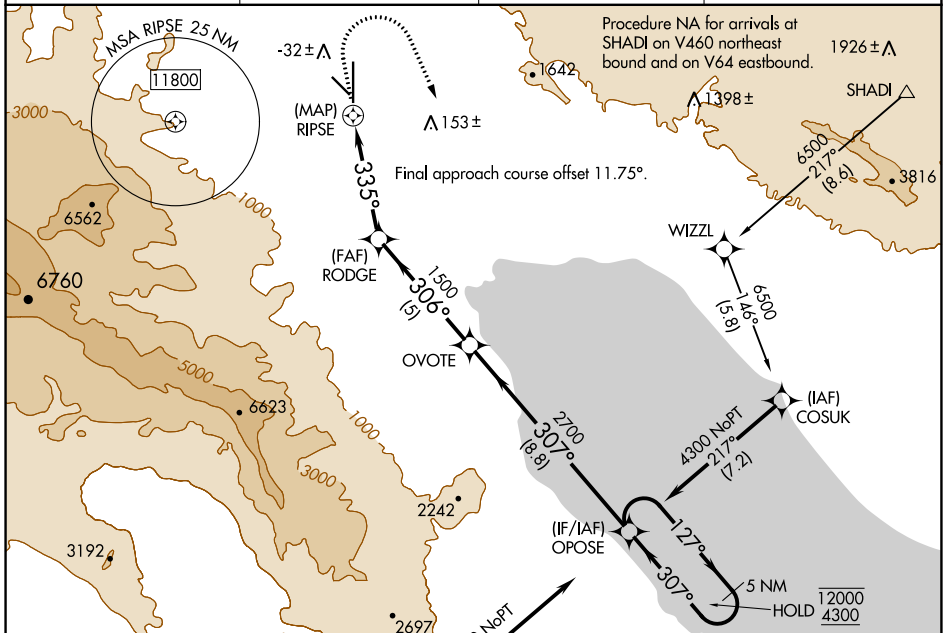
APP CRS	Rwy Idg	8500
335°	TDZE	-128
	Apt Elev	-114

RNAV (GPS) RWY 35

JACQUELINE COCHRAN RGNL (TRM)

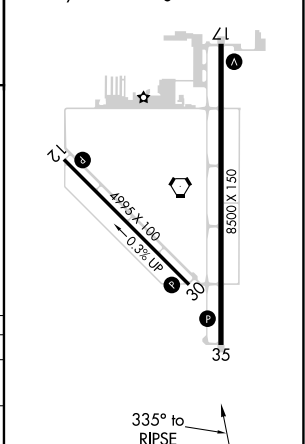
RNP APCH-GPS.		MISSED APPROACH: Climb to 1200 then climbing right turn to 4300 direct OPOSE and hold.	
---------------	--	--	--

ASOS 118.325	SOCAL APP CON 135.275 251.1	CLNC DEL 120.225	UNICOM 123.0 (CTAF) 0
------------------------	---------------------------------------	----------------------------	---------------------------------

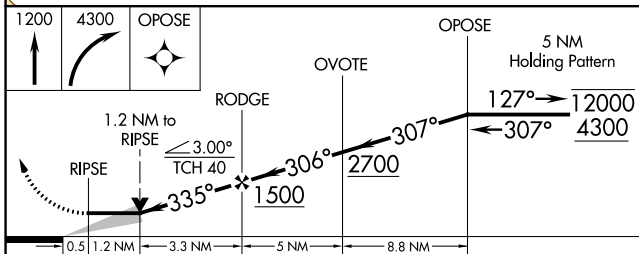


ELEV -114	TDZE -128
-----------	-----------

MIRL Rwy 12-30 and 17-35
REIL Rwy 17 and 35



1200	4300	OPOSE
↑	↪	✦



CATEGORY	A	B	C	D
LNVA MDA	440-1 568 (600-1)		940-3 1068 (1100-3)	
CIRCLING	440-1 554 (600-1)		940-3 1054 (1100-3)	

SW-3, 22 FEB 2024 to 21 MAR 2024

SW-3, 22 FEB 2024 to 21 MAR 2024

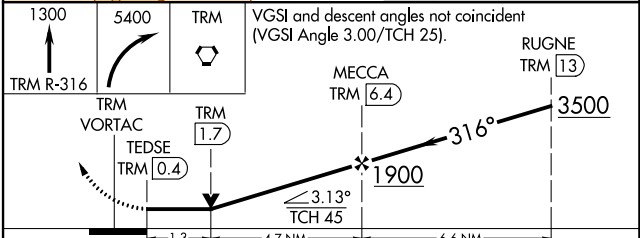
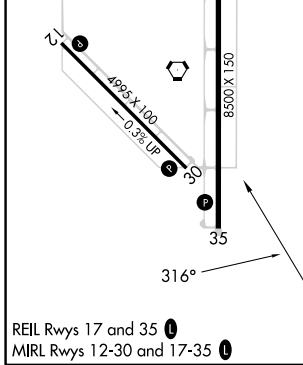
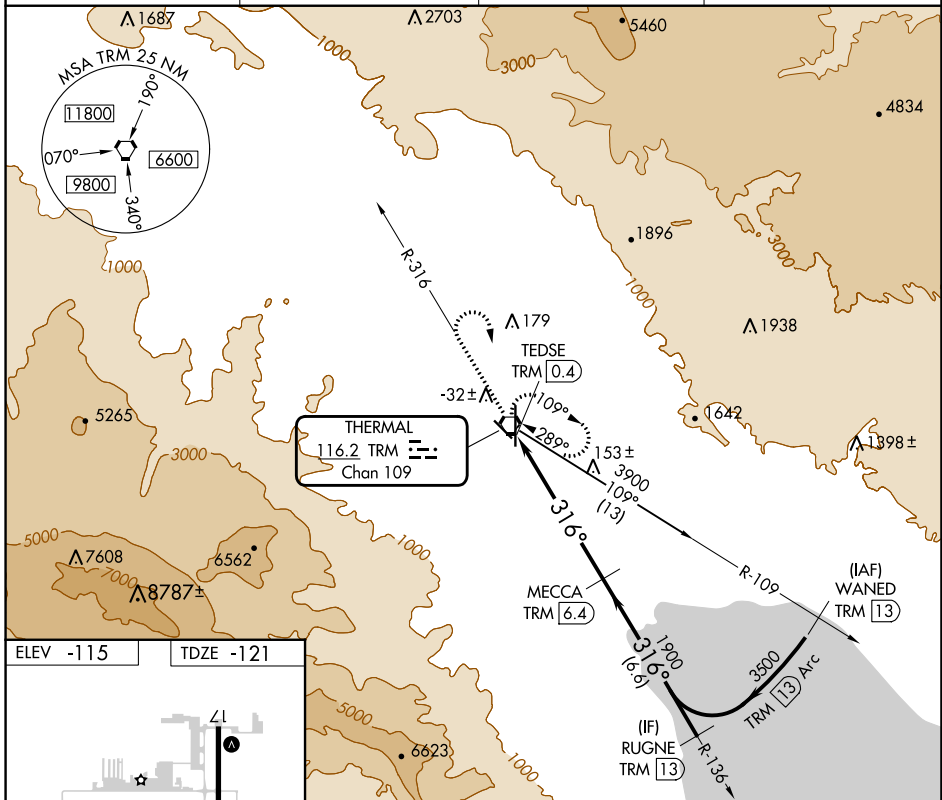
VORTAC TRM 116.2 Chan 109	APP CRS 316°	Rwy Idg TDZE -121 Apt Elev -115
---	------------------------	---

VOR RWY 30

JACQUELINE COCHRAN RGNL (TRM)

DME required.	MISSED APPROACH: Climb to 1300 on TRM VORTAC R-316 then climbing right turn to 5400 direct TRM VORTAC and hold, continue climb-in-hold to 5400.
▼ ▲ Rwy 30 helicopter visibility reduction below ¾ SM NA.	

ASOS 118.325	SOCAL APP CON 135.275 251.1	CLNC DEL 120.225	UNICOM 123.0 (CTAF) 0
------------------------	---------------------------------------	----------------------------	---------------------------------



TRM R-316	TRM VORTAC	TRM TEDSE [0.4]	TRM 1.7	MECCA TRM [6.4]	RUGNE TRM [13]
VGSI and descent angles not coincident (VGSI Angle 3.00/TCH 25).					
CATEGORY	A	B	C	D	
S-30	300-1	421 (500-1)	300-1¼	421 (500-1¼)	
☑ CIRCLING	320-1	340-1	460-1½	780-3	
	435 (500-1)	455 (500-1)	575 (600-1½)	895 (900-3)	

SW-3, 22 FEB 2024 to 21 MAR 2024

SW-3, 22 FEB 2024 to 21 MAR 2024

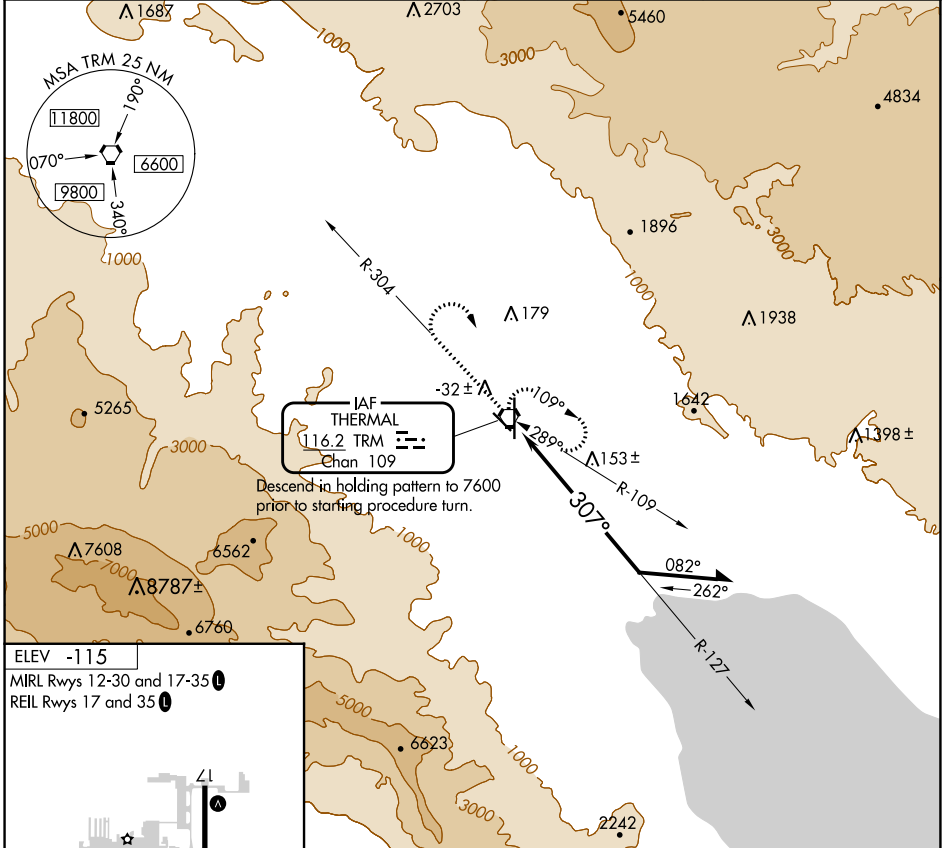
VORTAC TRM 116.2 Chan 109	APP CRS 307°	Rwy Idg TDZE Apt Elev	N/A N/A -115
---	------------------------	-----------------------------	---

VOR-A

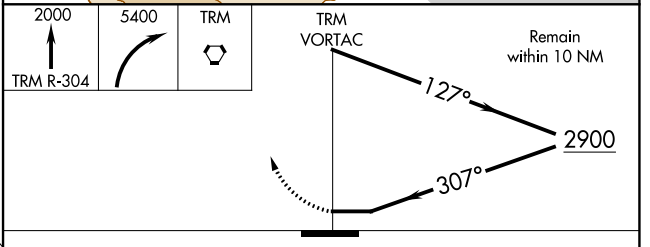
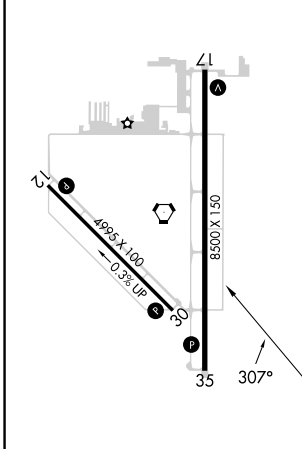
JACQUELINE COCHRAN RGNL (TRM)

MISSED APPROACH: Climb to 2000 on TRM VORTAC R-304 then climbing right turn to 5400 direct TRM VORTAC and hold, continue climb-in-hold to 5400.

ASOS 118.325	SOCAL APP CON 135.275 251.1	CLNC DEL 120.225	UNICOM 123.0 (CTAF)
------------------------	---------------------------------------	----------------------------	-------------------------------



ELEV -115
MIRL Rwys 12-30 and 17-35
REIL Rwys 17 and 35



CATEGORY	A	B	C	D
C CIRCLING	1400-1¼ 1515 (1600-1¼)	1400-1½ 1515 (1600-1½)	1400-3	1515 (1600-3)

SW-3, 22 FEB 2024 to 21 MAR 2024

SW-3, 22 FEB 2024 to 21 MAR 2024

VOR-A