

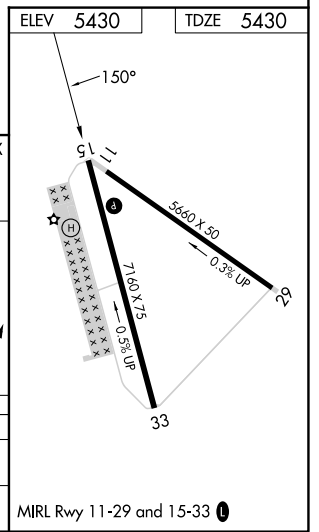
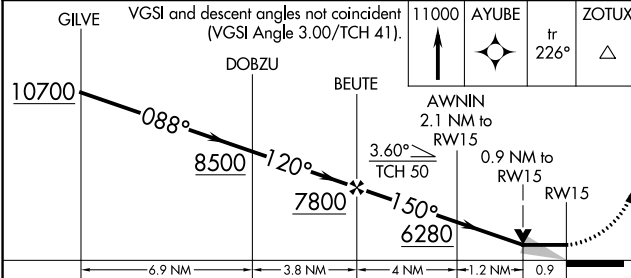
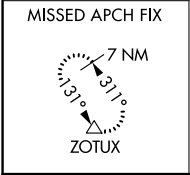
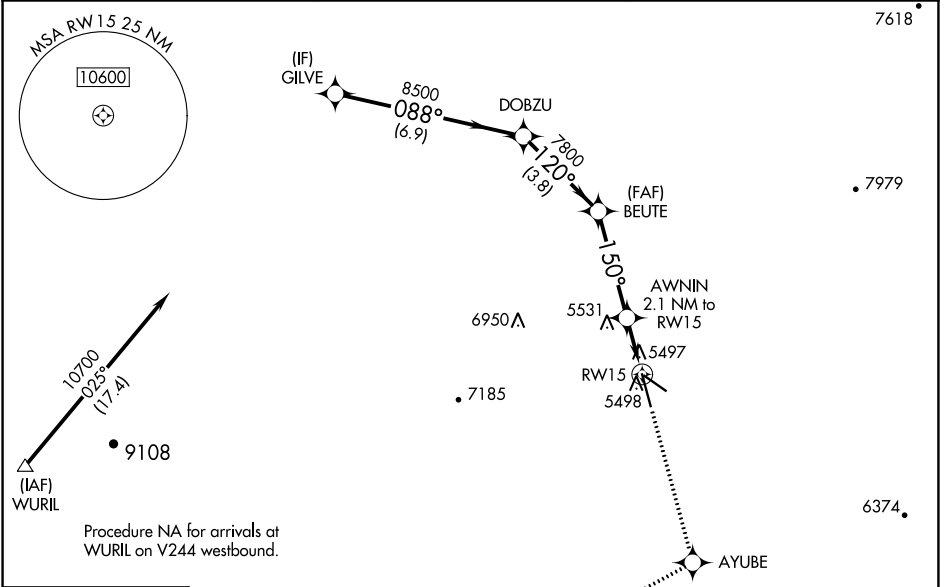
WAAS CH 42924 W15A	APP CRS 150°	Rwy Idg TDZE Apt Elev	7160 5430 5430
----------------------------------------	------------------------	-----------------------------	-------------------------------------------

RNAV (GPS) RWY 15

TONOPAH (TPH)

RNP APCH - GPS.	MISSED APPROACH: Climb to 11000 direct AYUBE and on track 226° to ZOTUX and hold.
When local altimeter setting not received, procedure NA.	

ASOS 118.875	NELLIS APP CON 119.35 254.4	UNICOM 123.0 (CTAF) 0
------------------------	---------------------------------------	---------------------------------



CATEGORY	A	B	C	D
LP MDA	5760-1 330 (400-1)			NA
LNAV MDA	5820-1	390 (400-1)	5820-1½ 390 (400-1½)	NA

SW-4, 22 FEB 2024 to 21 MAR 2024

SW-4, 22 FEB 2024 to 21 MAR 2024

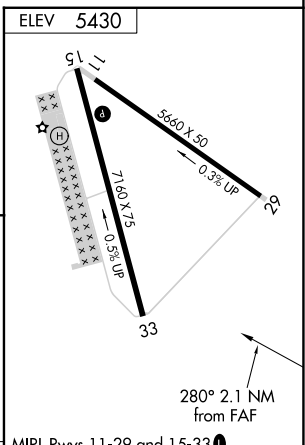
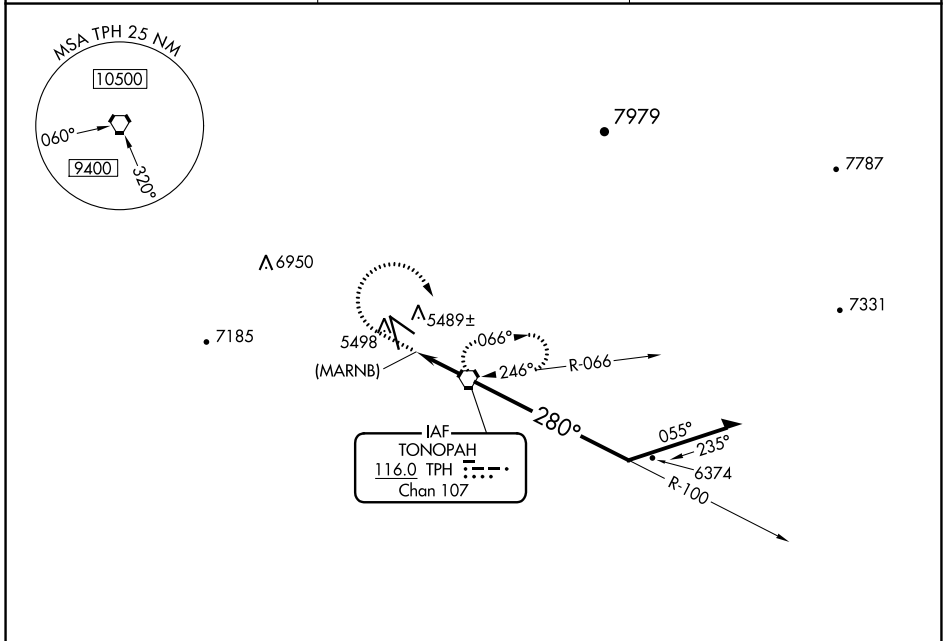
VORTAC TPH 116.0 Chan 107	APP CRS 280°	Rwy ldg TDZE N/A Apt Elev 5430
-----------------------------------------------	------------------------	---------------------------------------------

VOR or GPS-A

TONOPA (TPH)

⚠ Circling NA for Cat D southwest of Rwy 15-33. MISSED APPROACH: Climb to 6400 then climbing right turn to 9000 direct TPH VORTAC and hold.

ASOS 118,875	NELLIS APP CON 119,35 254.4	UNICOM 123.0 (CTAF) 0
------------------------	---------------------------------------	---------------------------------



6400	9000	TPH	Remain within 10 NM			
(MARNB) TPH	2.1	2.1 NM	A	B	C	D
			MIRL Rwy 11-29 and 15-33 0			
			FAF to MAP 2.1 NM			
			Knots			
			Min:Sec			

CATEGORY	A	B	C	D	FAF to MAP 2.1 NM					
CIRCLING	6100-1 670 (700-1)		6320-2 ³ / ₄ 890 (900-2 ³ / ₄)	6320-3 890 (900-3)	Knots	60	90	120	150	180
					Min:Sec	2:06	1:24	1:03	0:50	0:42

SW-4, 22 FEB 2024 to 21 MAR 2024

SW-4, 22 FEB 2024 to 21 MAR 2024