

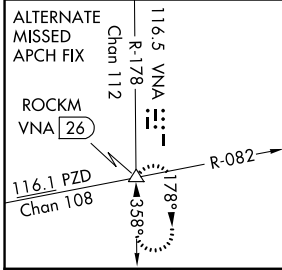
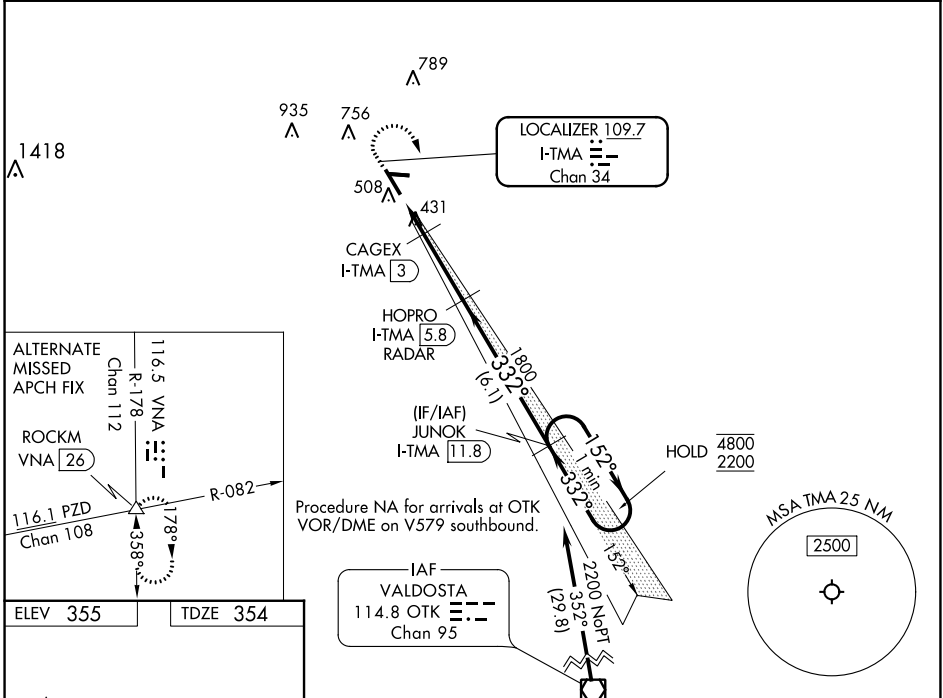
LOC/DME I-TMA	APP CRS	Rwy Idg	6506
109.7	332°	TDZE	354
Chan 34		Apt Elev	355

ILS or LOC RWY 34

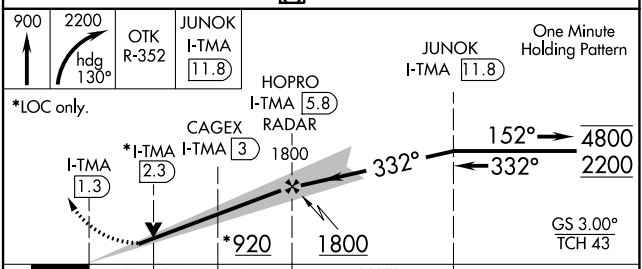
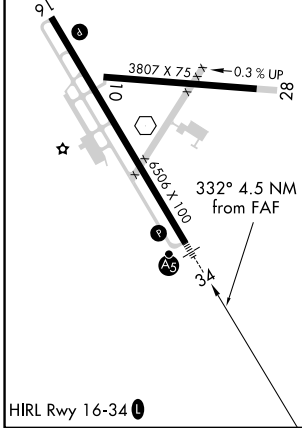
HENRY TIFT MYERS (TMA)

DME required.	MALSR	MISSED APPROACH: Climb to 900 then climbing right turn to 2200 on heading 130° and OTK VOR/DME R-352 to JUNOK/I-TMA 11.8 DME and hold.
<p>NA Circling Rwy 10 NA at night. Rwy 34 helicopter visibility reduction below 3/4 SM NA. For inop ALS, increase S-ILS 34 visibility all Cats to 7/8 SM and increase S-LOC 34 visibility all Cats to 1 SM.</p>		

AWOS-3PT 118.525	VALDOSTA APP CON ★ 126.6 285.6	UNICOM 122.7 (CTAF) 0
----------------------------	--	---------------------------------



ELEV 355	TDZE 354
----------	----------



CATEGORY	A	B	C	D
S-ILS 34		623-3/4	269 (300-3/4)	
S-LOC 34		700-3/4	346 (400-3/4)	
C CIRCLING	920-1 565 (600-1)	1060-1 705 (800-1)	1060-2 705 (800-2)	1240-3 885 (900-3)

SE-4, 01 DEC 2022 to 29 DEC 2022

SE-4, 01 DEC 2022 to 29 DEC 2022

WAAS CH 62839 W16A	APP CRS 152°	Rwy Idg TDZE Apt Elev	6506 355 355
--	------------------------	-----------------------------	---

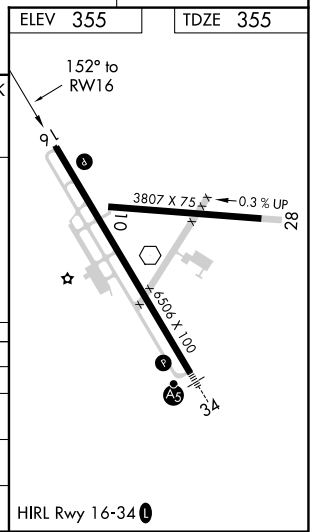
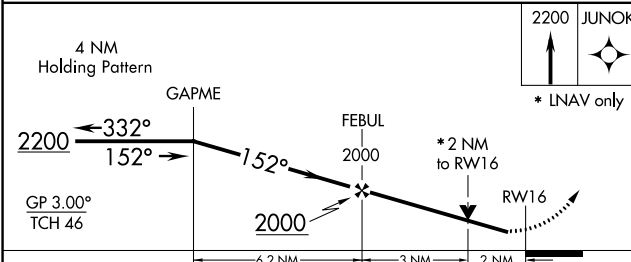
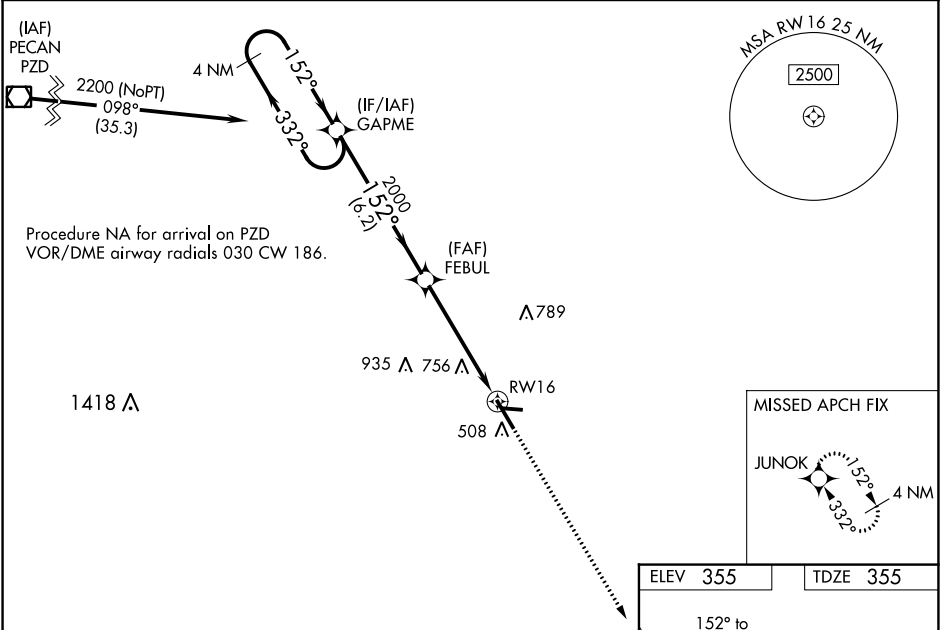
RNAV (GPS) RWY 16

HENRY TIFT MYERS (TMA)

⚠ For uncompensated Baro-VNAV systems, LNAV/VNAV NA below -1.5°C (5°F) or above 54°C (130°F). Circling Rwy 10 NA at night. DME/DME RNP-0.3 NA. Rwy 16 Helicopter visibility reduction below 3/4 SM NA.

MISSED APPROACH:
Climb to 2200 direct JUNOK and hold.

AWOS-3PT 118.525	VALDOSTA APP CON★ 126.6 285.6	UNICOM 122.7 (CTAF) 0
----------------------------	---	---------------------------------



CATEGORY	A	B	C	D
LPV DA		621-7/8	266 (300-7/8)	
LNAV/VNAV DA		1100-3	745 (800-3)	
LNAV MDA	1020-1	665 (700-1)	1020-17/8	665 (700-17/8)
C CIRCLING	1020-1 665 (700-1)	1060-1 705 (800-1)	1060-2 705 (800-2)	1240-3 885 (900-3)

SE-4, 01 DEC 2022 to 29 DEC 2022

SE-4, 01 DEC 2022 to 29 DEC 2022

WAAS CH 53339 W28A	APP CRS 277°	Rwy Idg TDZE Apt Elev	3807 350 355
--	------------------------	-----------------------------	---

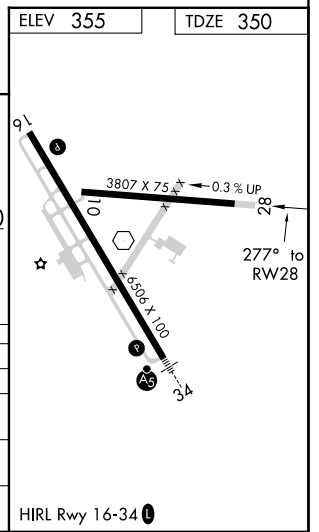
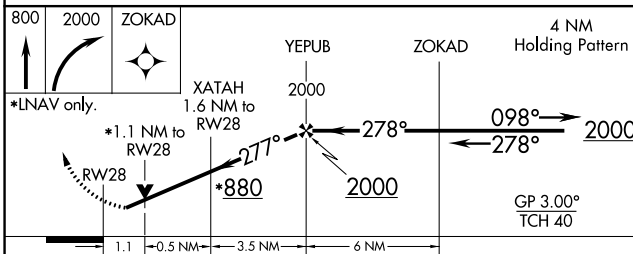
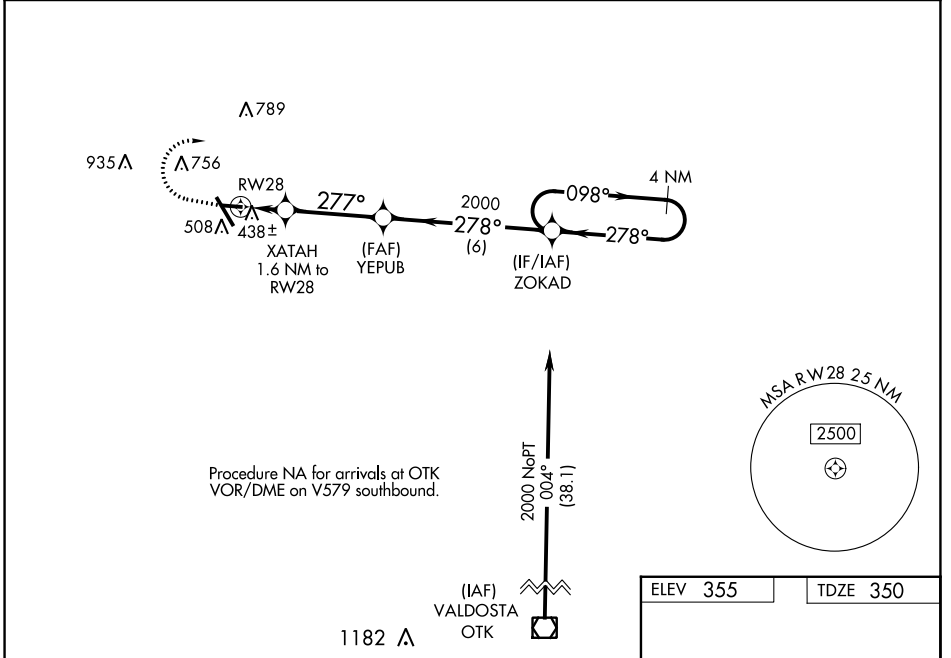
RNAV (GPS) RWY 28

HENRY TIFT MYERS (TMA)

▼ For uncompensated Baro-VNAV systems, LNAV/VNAV NA below -1.5°C (5°F) or above 54°C (130°F). Baro-VNAV and VDP NA when using Moultrie altimeter setting. DME/DME RNP-0.3 NA. When local altimeter setting not received, use Moultrie altimeter setting; increase LPV DA to 673 feet and LNAV/VNAV DA to 689 feet and all MDA 80 feet; increase LPV all Cats and LNAV/VNAV all Cats visibility 1/8 mile, LNAV Cat C/D visibility 1/4 mile, and increase Circling Cat C visibility 1/4 mile. Straight-in minimums NA at night. Circling Rwy 10 NA at night. Helicopter visibility reduction below 3/4 SM NA.

▲ NA MISSED APPROACH: Climb to 800 then climbing right turn to 2000 direct ZOKAD and hold.

AWOS-3PT 118.525	VALDOSTA APP CON ★ 126.6 285.6	UNICOM 122.7 (CTAF) 0
----------------------------	--	---------------------------------



CATEGORY	A	B	C	D
LPV DA		604-1	254 (300-1)	
LNAV/VNAV DA		628-1	278 (300-1)	
LNAV MDA		720-1	370 (400-1)	
C CIRCLING	920-1 565 (600-1)	1060-1 705 (800-1)	1060-2 705 (800-2)	1240-3 885 (900-3)

SE-4, 01 DEC 2022 to 29 DEC 2022

SE-4, 01 DEC 2022 to 29 DEC 2022

TIFTON, GEORGIA

AL-5398 (FAA)

19339

WAAS CH 61118 W34A	APP CRS 332°	Rwy Ldg TDZE Apt Elev	6506 354 355
--	------------------------	-----------------------------	---

RNAV (GPS) RWY 34

HENRY TIFT MYERS (TMA)

⚠ For uncompensated Baro-VNAV systems, LNAV/VNAV NA below -15°C (5°F) or above 54°C (130°F).
⚠ DME/DME RNP-0.3 NA. Circling Rwy 10 NA at night.
 Rwy 34 helicopter visibility reduction below ¾ SM NA.

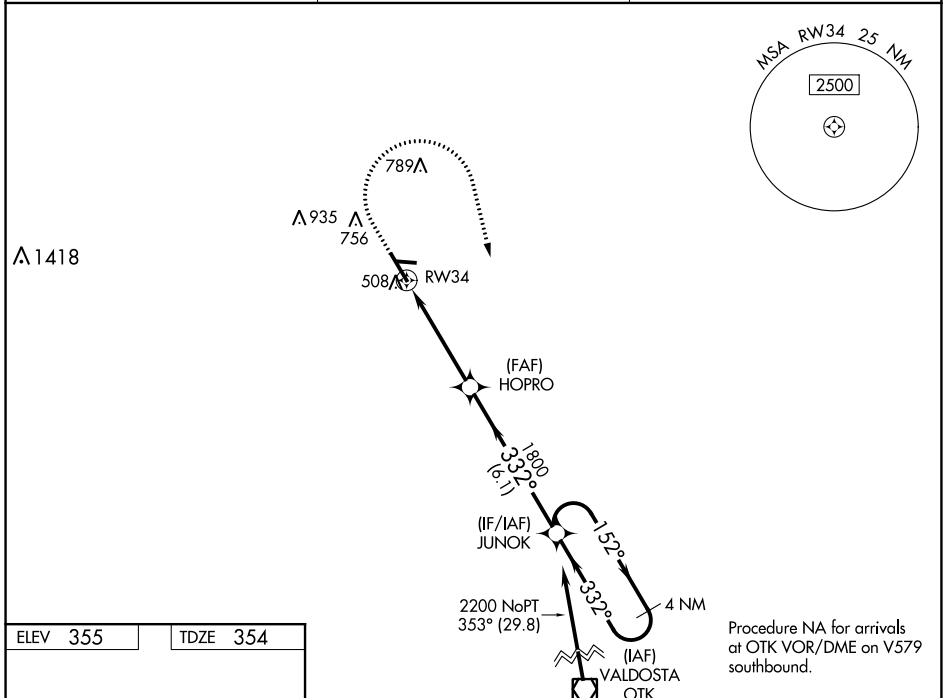
MALSR

MISSED APPROACH: Climb to 900 then climbing right turn to 2200 direct JUNOK and hold.

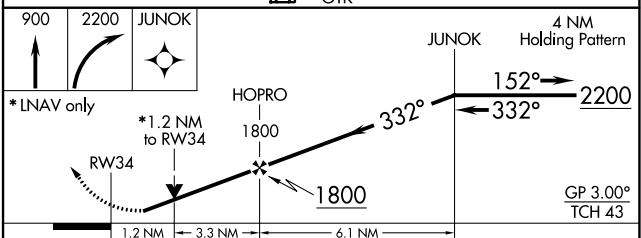
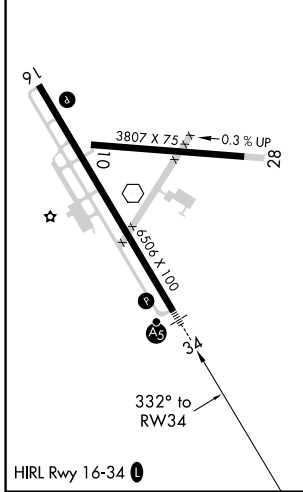
AWOS-3PT
118.525

VALDOSTA APP CON ★
126.6 285.6

UNICOM
122.7 (CTAF) 0



ELEV 355	TDZE 354
----------	----------



CATEGORY	A	B	C	D
LPV DA		638-¾	284 (300-¾)	
LNAV/VNAV DA		684-¾	330 (400-¾)	
LNAV MDA		780-¾	426 (500-¾)	
C CIRCLING	920-1 565 (600-1)	1060-1 705 (800-1)	1060-2 705 (800-1)	1240-3 885 (900-3)

TIFTON, GEORGIA
Amdt 1A 17AUG17

31°26'N-83°29'W

RNAV (GPS) RWY 34

HENRY TIFT MYERS (TMA)

SE-4, 01 DEC 2022 to 29 DEC 2022

SE-4, 01 DEC 2022 to 29 DEC 2022