

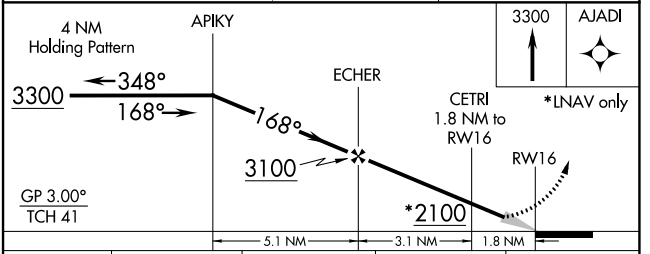
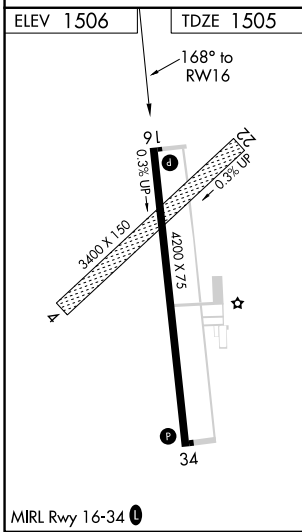
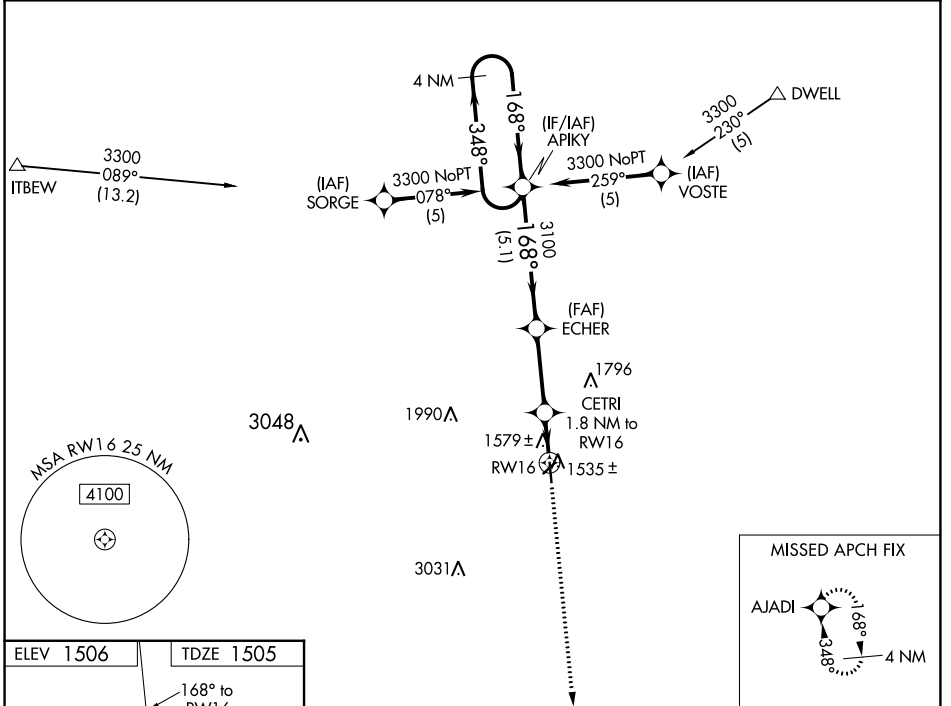
WAAS CH 56507 W16A	APP CRS 168°	Rwy Idg TDZE Apt Elev	4200 1505 1506
--	------------------------	-----------------------------	---

RNAV (GPS) RWY 16

SEWARD MUNI (SWT)

RNP APCH. ▼ Baro-VNAV NA. Use Lincoln altimeter setting. ▲ NA Circling NA to Rwy's 4 and 22.	MISSED APPROACH: Climb to 3300 direct AJADI and hold.
--	---

LNK ASOS 118.05 290.9	OMAHA APP CON 124.0 270.3	UNICOM 122.8 (CTAF) 0
---------------------------------	-------------------------------------	---------------------------------



CATEGORY	A	B	C	D
LPV DA	1832-1¼	327 (400-1¼)		NA
LNAV/VNAV DA	1926-1½	421 (500-1½)		NA
LNAV MDA	1960-1	455 (500-1)		NA
CIRCLING	2020-1	514 (600-1)		NA

NC-2, 22 FEB 2024 to 21 MAR 2024

NC-2, 22 FEB 2024 to 21 MAR 2024

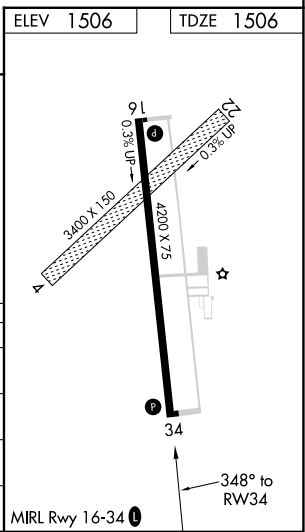
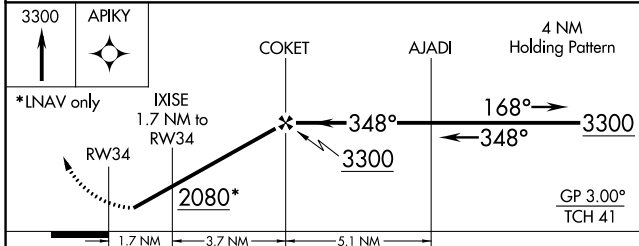
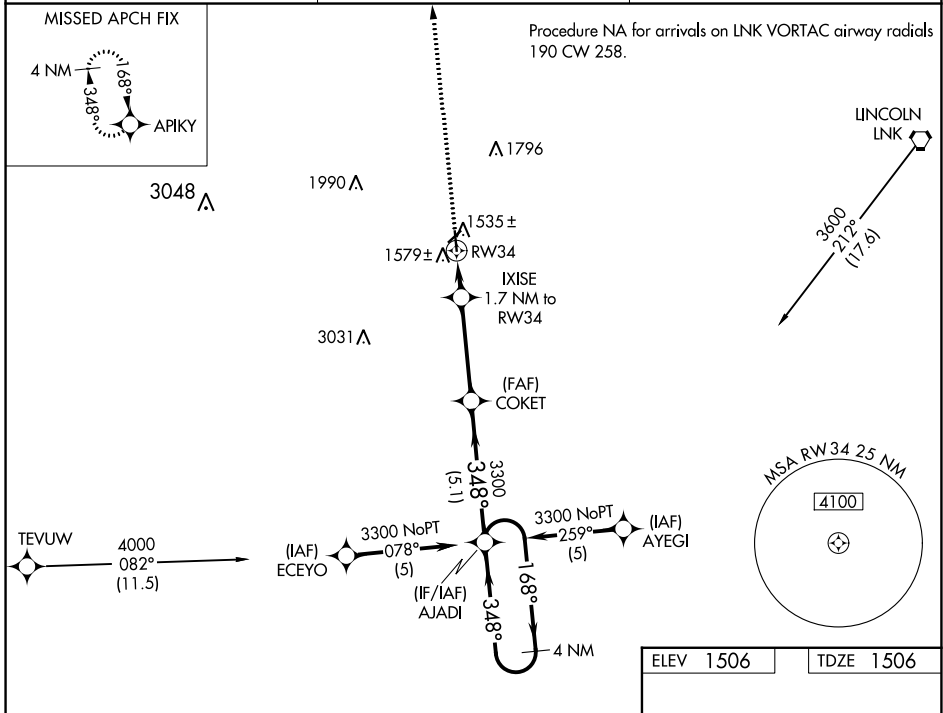
WAAS CH 82407 W34A	APP CRS 348°	Rwy Idg TDZE Apt Elev	4200 1506 1506
--	------------------------	-----------------------------	---

RNAV (GPS) RWY 34

SEWARD MUNI (SWT)

RNP APCH.	Baro-VNAV NA. Use Lincoln altimeter setting. Circling NA to Rwys 4 and 22.	MISSED APPROACH: Climb to 3300 direct APIKY and hold.
NA	Rwy 34 helicopter visibility reduction below 3/4 SM NA.	

LNK ASOS 118.05 290.9	OMAHA APP CON 124.0 270.3	UNICOM 122.8 (CTAF) 1
---------------------------------	-------------------------------------	--



CATEGORY	A	B	C	D
LPV DA	1833-1¼	327 (400-1¼)		NA
LNAV/VNAV DA	1926-1½	420 (500-1½)		NA
LNAV MDA	1960-1	454 (500-1)		NA
CIRCLING	2020-1	514 (600-1)		NA

NC-2, 22 FEB 2024 to 21 MAR 2024

NC-2, 22 FEB 2024 to 21 MAR 2024