

APP CRS <b>297°</b>	Rwy Idg <b>4051</b>
	TDZE <b>4146</b>
	Apt Elev <b>4149</b>

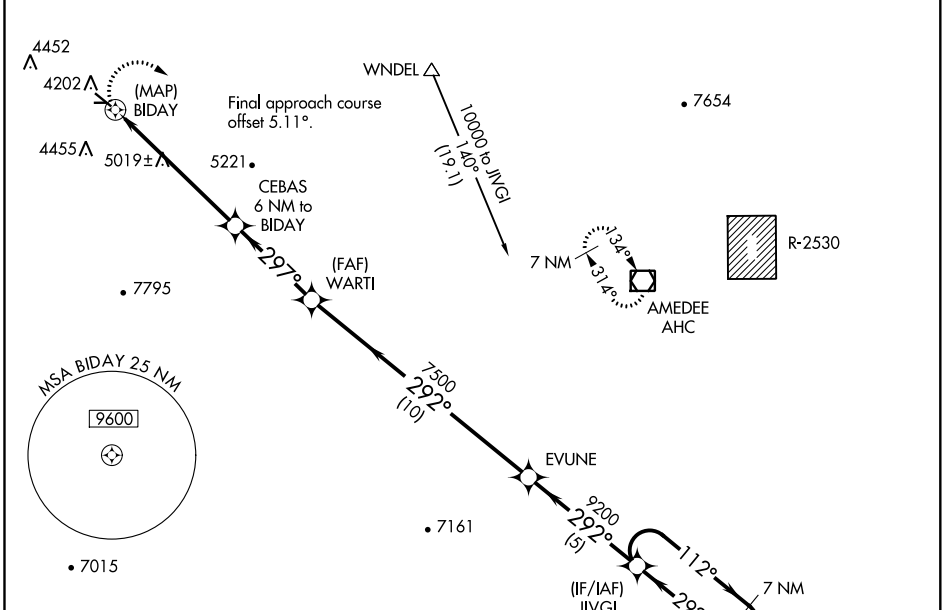
# RNAV (GPS) RWY 29

SUSANVILLE MUNI (SVLE)

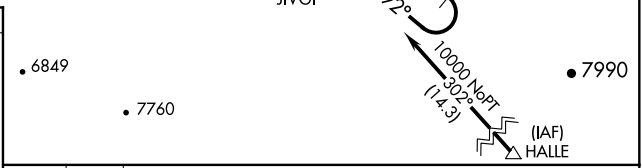
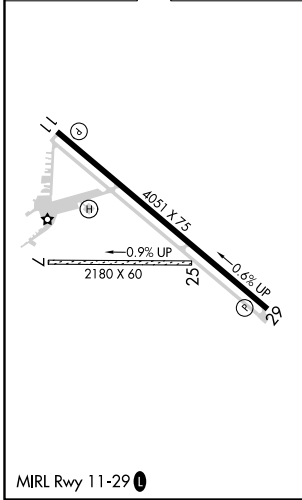
**⚠** DME/DME RNP-0.3 NA. When local altimeter setting not received, use Reno/Stead altimeter setting and increase all MDA 720 feet. Circling to Rwy 7/25 NA. Rwy 29 helicopter visibility reduction below  $\frac{3}{4}$  SM NA.

**⚠** MISSED APPROACH: Climbing right turn to 14000 direct AHC VOR/DME and hold, continue climb-in-hold to 14000.

AWOS-3 <b>133.8</b>	OAKLAND CENTER <b>128.8 285.5</b>	UNICOM <b>122.8 (CTAF) 0</b>
------------------------	--------------------------------------	---------------------------------



ELEV 4149	TDZE 4146
-----------	-----------



CATEGORY	A	B	C	D
LNAV MDA	5760-1¼ 1614 (1700-1¼)	5760-1½ 1614 (1700-1½)	5760-3	1614 (1700-3)
CIRCLING	5760-1¼ 1611 (1700-1¼)	5760-1½ 1611 (1700-1½)	5760-3	1611 (1700-3)

SW-2, 19 MAY 2022 to 16 JUN 2022

SW-2, 19 MAY 2022 to 16 JUN 2022

APP CRS	Rwy Idg	N/A
142°	TDZE	N/A
	Apt Elev	4149

# RNAV (GPS)-A

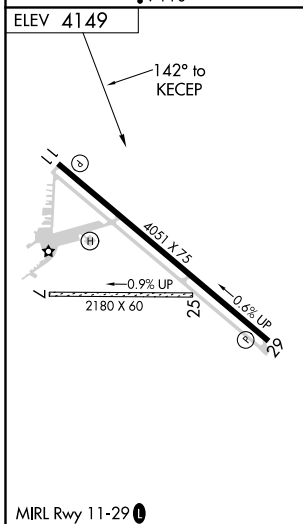
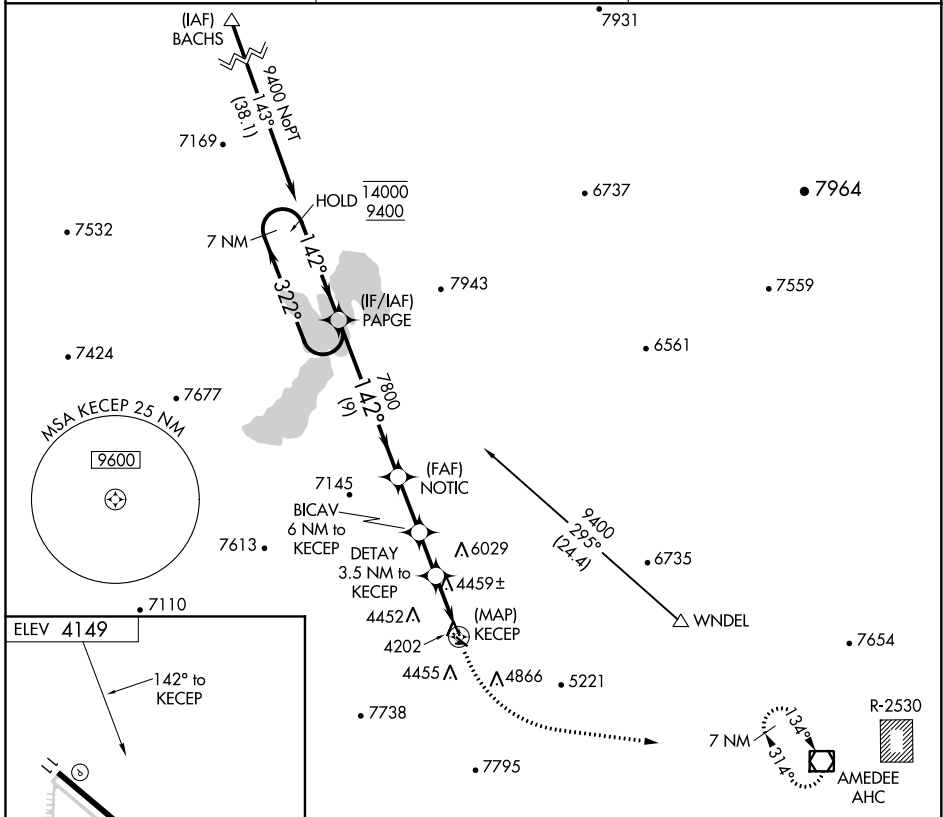
SUSANVILLE MUNI (SVE)

RNP APCH.

**∇** Circling NA for Cat D southwest of Rwy 11-29.  
**Δ** NA When local altimeter setting not received, procedure NA.  
 Circling NA to Rwy 7/25.

MISSED APPROACH: Climbing left turn to 14000 direct AHC VOR/DME and hold, continue climb-in-hold to 14000.

AWOS-3 <b>133.8</b>	OAKLAND CENTER <b>128.8 285.5</b>	UNICOM <b>122.8 (CTAF)</b>
------------------------	--------------------------------------	-------------------------------



	7 NM Holding Pattern	PAPER	NOTIC	BICAV 6 NM to KECEP	DETAI 3.5 NM to KECEP	KECEP	14000 AHC
	14000 ← 322°	9400 → 142°	7800	7360	6360		
		9 NM	3.2 NM	2.5 NM	3.5 NM		
CATEGORY	A	B	C	D			
<b>C</b> CIRCLING	5260-1¼ 1111 (1200-1¼)	5260-1½ 1111 (1200-1½)	5780-3 1631 (1700-3)	6060-3 1911 (2000-3)			

SW-2, 19 MAY 2022 to 16 JUN 2022

SW-2, 19 MAY 2022 to 16 JUN 2022