





WAAS CH <b>57935</b> <b>W13A</b>	APP CRS <b>132°</b>	Rwy Idg TDZE Apt Elev	<b>4797</b> <b>811</b> <b>827</b>
--	------------------------	-----------------------------	---

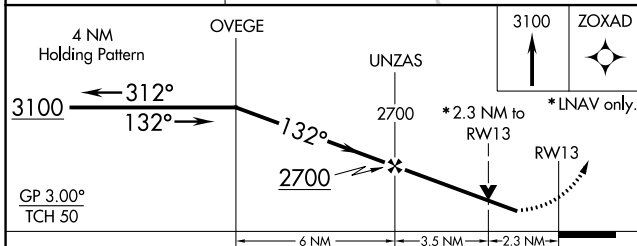
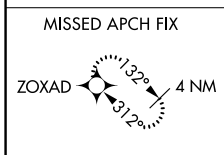
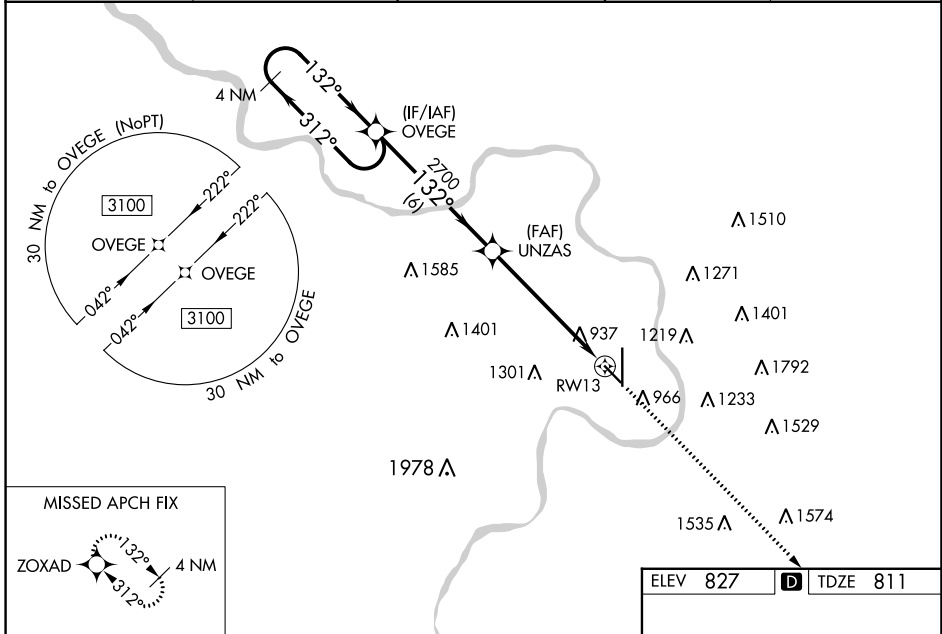
# RNAV (GPS) RWY 13

ROSECRANS MEML (STJ)

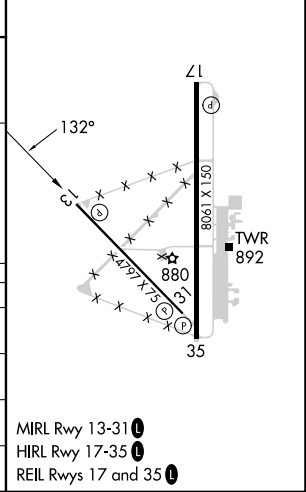
**⚠** For uncompensated Baro-VNAV systems, LNAV/VNAV NA below -20°C (-4°F) or above 54°C (130°F). DME/DME RNP-0.3 NA. Straight-In minimums NA at night. Baro-VNAV and VDP NA when using Kansas City Intl altimeter setting. Helicopter visibility reduction below 3/4 SM NA. When local altimeter setting not received, use Kansas City Intl altimeter setting and increase all DA 97 feet, and LPV visibility 3/8 mile all Cats, LNAV/VNAV visibility 1/4 mile all Cats; increase all MDA 100 feet and Circling Cat C 1/2 mile, Cat D 1/4 mile.

**MISSED APPROACH:**  
Climb to 3100 direct ZOAXD and hold.

ATIS <b>125.05</b>	ST. JOSEPH APP CON * <b>120.35 360.8</b>	ST. JOSEPH TOWER * <b>126.9 (CTAF) 239.0</b>	GND CON <b>121.9</b>	UNICOM <b>122.95</b>
-----------------------	---	---	-------------------------	-------------------------



ELEV 827	<b>D</b> TDZE 811
----------	-------------------



CATEGORY	A	B	C	D
LPV DA		1377-1 7/8	566 (600-1 1/8)	
LNAV/VNAV DA		1416-2 1/4	605 (600-2 1/4)	
LNAV MDA	1580-1 769 (800-1)	1580-1 1/4 769 (800-1 1/4)	1580-2 1/2	769 (800-2 1/2)
<b>C</b> CIRCLING	1580-1 753 (800-1)	1580-1 1/4 753 (800-1 1/4)	1620-2 1/2 793 (800-2 1/2)	1640-2 3/4 813 (900-2 3/4)

MIRL Rwy 13-31 **⓪**  
HIRL Rwy 17-35 **⓪**  
REIL Rwy 17 and 35 **⓪**

NC-3, 22 FEB 2024 to 21 MAR 2024

NC-3, 22 FEB 2024 to 21 MAR 2024



WAAS CH <b>65835</b> <b>W31A</b>	APP CRS <b>312°</b>	Rwy Idg TDZE Apt Elev	<b>4797</b> <b>812</b> <b>827</b>
--	------------------------	-----------------------------	---

# RNAV (GPS) RWY 31

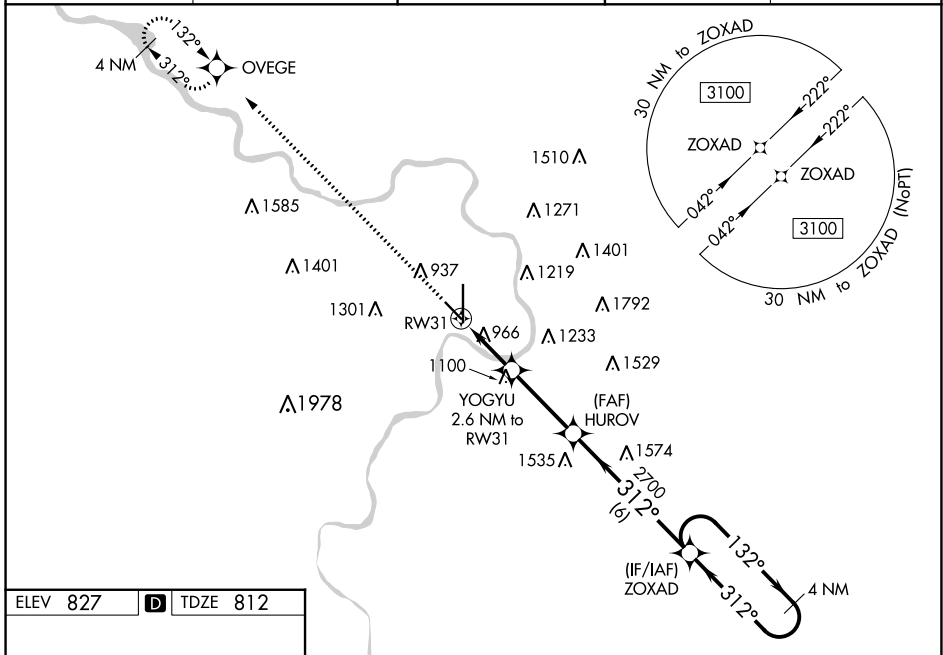
ROSECRANS MEML (STJ)

**⚠** For uncompensated Baro-VNAV systems, LNAV/VNAV NA below -20°C (-4°F) or above 54°C (130°F). DME/DME RNP-0.3 NA. Baro-VNAV and VDP NA when using Kansas City Intl altimeter setting. Straight-In minimums NA at night. When local altimeter setting not received, use Kansas City Intl altimeter setting and increase all DA 97 feet and increase LPV visibility 1/8 mile and LNAV/VNAV visibility 3/8 mile all Cats; increase all MDA 100 feet and LNAV Cat C and D visibility 1/4 mile, and Circling Cat C 1/2 mile, Cat D 1/4 mile.

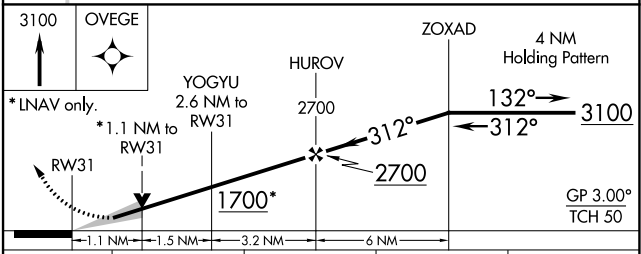
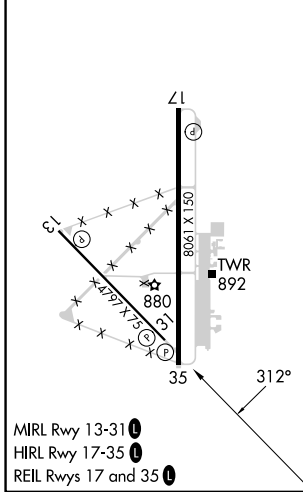
**⚠** ASR/PAR

**MISSED APPROACH:**  
Climb to 3100 direct OVEGE and hold.

ATIS <b>125.05</b>	ST. JOSEPH APP CON ★ <b>120.35 360.8</b>	ST. JOSEPH TOWER ★ <b>126.9(CTAF) 239.0</b>	GND CON <b>121.9</b>	UNICOM <b>122.95</b>
-----------------------	---	--	-------------------------	-------------------------



ELEV 827	<b>D</b>	TDZE 812
----------	----------	----------



CATEGORY	A	B	C	D
LPV DA	1062-1		250 (300-1)	
LNAV/VNAV DA	1255-1½		443 (500-1½)	
LNAV MDA	1220-1 408 (400-1)		1220-1½ 408 (400-1½)	
<b>C</b> CIRCLING	1400-1 573 (600-1)	1420-1 593 (600-1)	1620-2¼ 793 (800-2¼)	1640-2¾ 813 (900-2¾)

NC-3, 22 FEB 2024 to 21 MAR 2024

NC-3, 22 FEB 2024 to 21 MAR 2024

WAAS CH <b>77819</b> W35A	APP CRS <b>356°</b>	Rwy Idg 8061
		TDZE 815
		Apt Elev 827

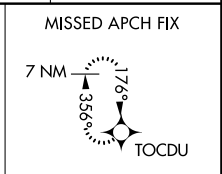
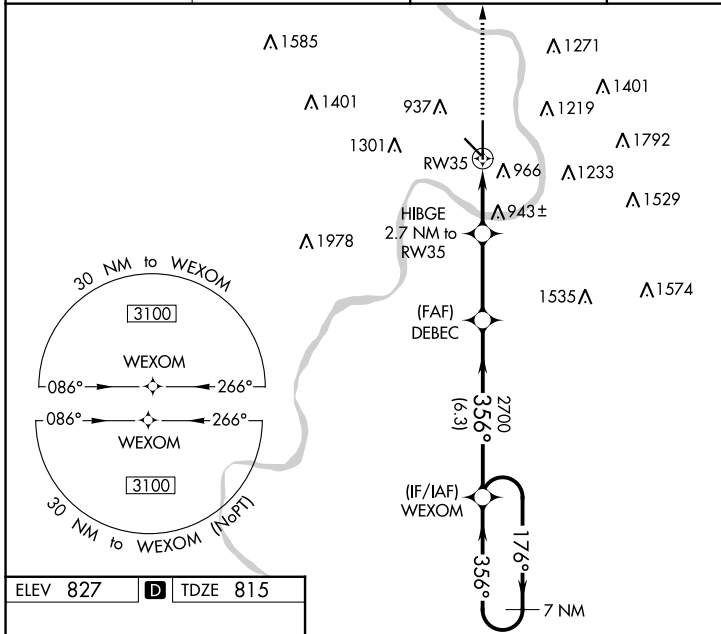
# RNAV (GPS) RWY 35

ROSECRANS MEML (STJ)

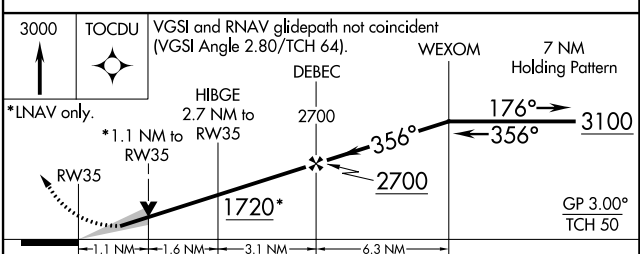
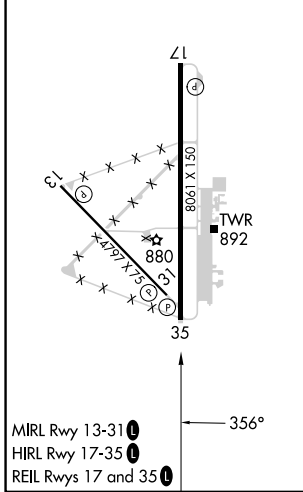
**⚠** For uncompensated Baro-VNAV systems, LNAV/VNAV NA below -20°C (-4°F) or above 54°C (130°F). DME/DME RNP-0.3 NA. VDP and Baro-VNAV NA when using Kansas City ASR/PAR  
**⚠** Inlt altimeter setting. When local altimeter setting not received, use Kansas City Inlt altimeter setting and increase all DA 97 feet and increase LPV all Cats visibility to RVR 5000, and LNAV/VNAV all Cats visibility to 1½ mile; increase all MDA 100 feet, and increase LNAV Cat C/D/E visibility ¼ mile, and Circling Cat C ½ mile, Cat D ½ mile.

**MISSED APPROACH:**  
Climb to 3000 direct TOCDU and hold.

ATIS <b>125.05</b>	ST. JOSEPH APP CON ★ <b>120.35 360.8</b>	ST. JOSEPH TOWER ★ <b>126.9(CTAF) 239.0</b>	GND CON <b>121.9</b>	UNICOM <b>122.95</b>
-----------------------	---	--	-------------------------	-------------------------



ELEV 827	<b>D</b>	TDZE 815
----------	----------	----------



CATEGORY	A	B	C	D	E
LPV DA		1015/40	200 (200-¾)		
LNAV/VNAV DA		1096/45	281 (300-¾)		
LNAV MDA	1200/55	385 (400-1)	1200/60	385 (400-1¼)	
<b>C</b> CIRCLING	1400-1 573 (600-1)	1420-1 593 (600-1)	1620-2¼ 793 (800-2¼)	1640-2¾ 813 (900-2¾)	1760-3 933 (1000-3)

NC-3, 22 FEB 2024 to 21 MAR 2024

NC-3, 22 FEB 2024 to 21 MAR 2024

VORTAC STJ <b>115.5</b> Chan <b>102</b>	APP CRS <b>167°</b>	Rwy Idg TDZE Apt Elev	<b>8061</b> <b>827</b> <b>827</b>
---	------------------------	-----------------------------	---

# VOR or TACAN RWY 17

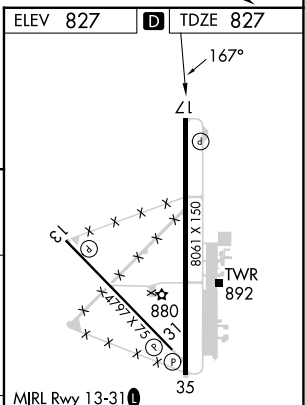
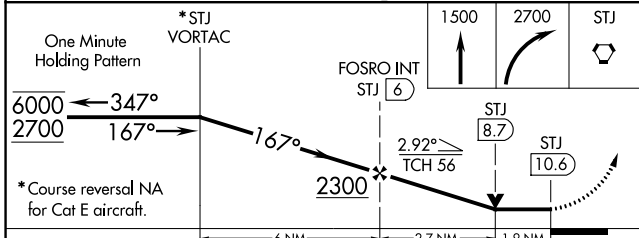
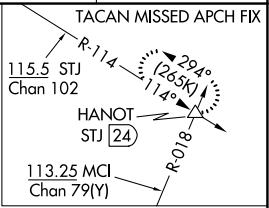
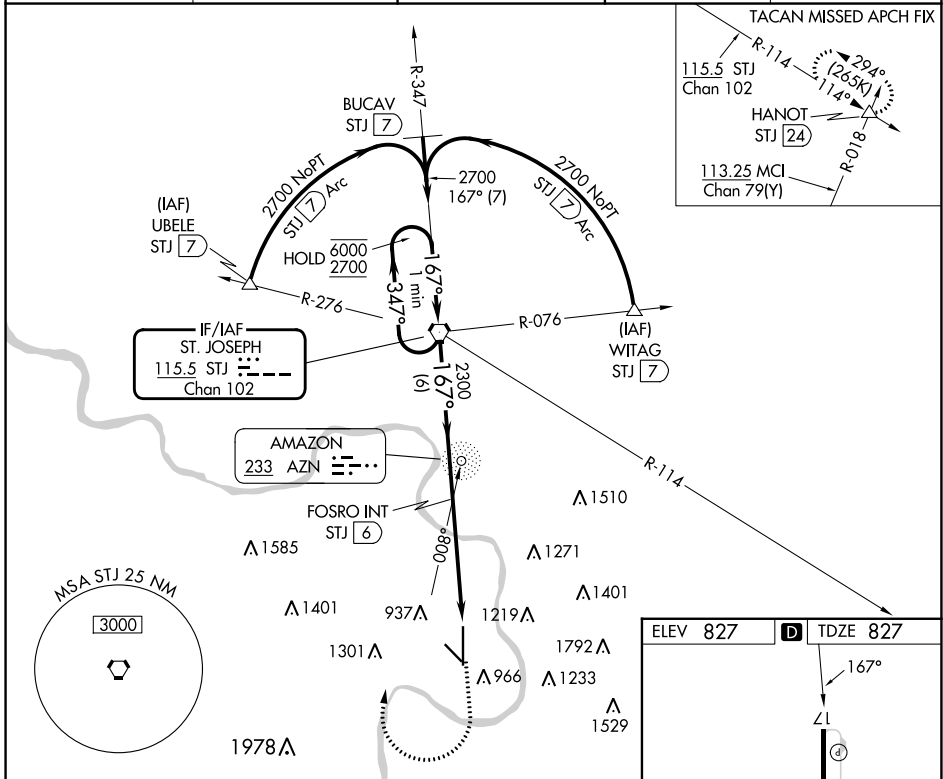
ROSECRANS MEML (STJ)

ADF or DME required.

**MISSED APPROACH TO STJ VORTAC NA for Cat E aircraft.**  
ASR/PAR

**MISSED APPROACH:** Climb to 1500 then climbing right turn to 2700 direct STJ VORTAC and hold. (TACAN aircraft climb to 2300 then climbing left turn to 3100 direct HANOT INT/STJ 24 DME and hold NW, LT, 114° inbound, GPS required).

ATIS <b>125.05</b>	ST. JOSEPH APP CON * <b>120.35 360.8</b>	ST. JOSEPH TOWER * <b>126.9 (CTAF) 239.0</b>	GND CON <b>121.9</b>	UNICOM <b>122.95</b>
-----------------------	---	---	-------------------------	-------------------------



CATEGORY	A	B	C	D	E
S-17	1500-1	673 (700-1)	1500-1 $\frac{7}{8}$	673 (700-1 $\frac{7}{8}$ )	
CIRCLING	1500-1	673 (700-1)	1620-2 $\frac{1}{4}$ 793 (800-2 $\frac{1}{4}$ )	1640-2 $\frac{3}{4}$ 813 (900-2 $\frac{3}{4}$ )	1760-3 933 (1000-3)

ELEV 827	TDZE 827
1500	1500
800	800
880	880
892	892
35	35

MIRL Rwy 13-31  
HIRL Rwy 17-35  
REIL Rwys 17 and 35

FAF to MAP 4.6 NM

Knots	60	90	120	150	180
Min:Sec	4:36	3:04	2:18	1:50	1:32

NC-3, 22 FEB 2024 to 21 MAR 2024

NC-3, 22 FEB 2024 to 21 MAR 2024

STJ VORTAC <b>115.5</b> Chan <b>102</b>	APP CRS <b>348°</b>	Rwy Idg TDZE Apt Elev	<b>8061</b> <b>815</b> <b>827</b>
---	------------------------	-----------------------------	---

# VOR or TACAN RWY 35

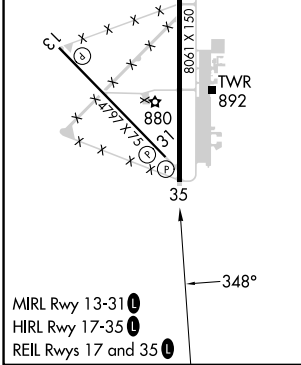
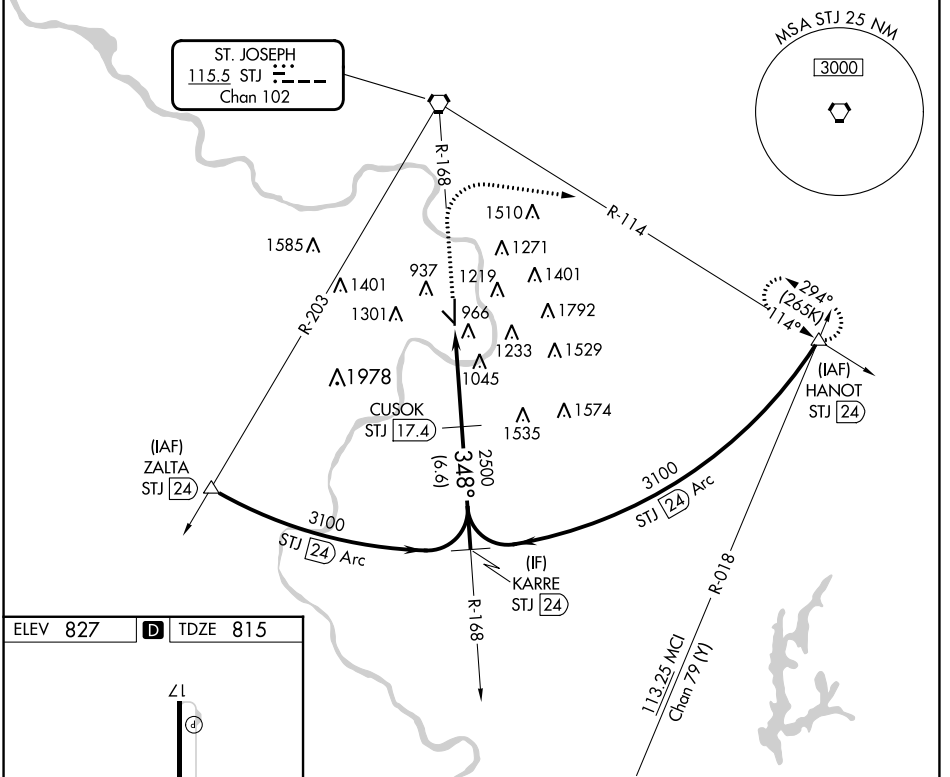
ROSECRANS MEML (STJ)

DME required.

**▽**  
**▲**  
ASR/PAR

MISSED APPROACH: Climb to 2700 then climbing right turn to 3100 on heading 090° and STJ VORTAC R-114 to HANOT/24 DME and hold.

ATIS <b>125.05</b>	ST. JOSEPH APP CON * <b>120.35 360.8</b>	ST. JOSEPH TOWER * <b>126.9 (CTAF) 239.0</b>	GND CON <b>121.9</b>	UNICOM <b>122.95</b>
-----------------------	---	---	-------------------------	-------------------------



ELEV 827	<b>D</b> TDZE 815				
2700	3100	HANOT	KARRE		
↑	hdg 090°	STJ R-114	STJ [24]		
		CUSOK STJ [17.4]	3100		
		STJ [13.5]	2500		
		STJ [11.9]	348°		
		≤ 2.79°	TCH 64		
		1.6	3.9 NM	6.6 NM	
CATEGORY	A	B	C	D	E
S-35	1360-55	545 (600-1)	1360-1 5/8 545 (600-1 1/4)	1360-1 3/4 545 (600-1 1/4)	1360-2 545 (600-2)
<b>C</b> CIRCLING	1400-1 573 (600-1)	1420-1 593 (600-1)	1620-2 1/4 793 (800-2 1/4)	1640-2 3/4 813 (900-2 3/4)	1760-3 933 (1000-3)

NC-3, 22 FEB 2024 to 21 MAR 2024

NC-3, 22 FEB 2024 to 21 MAR 2024