

ILS or LOC RWY 5

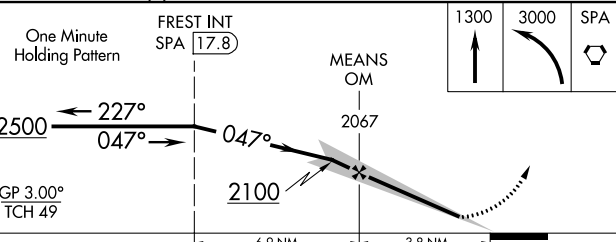
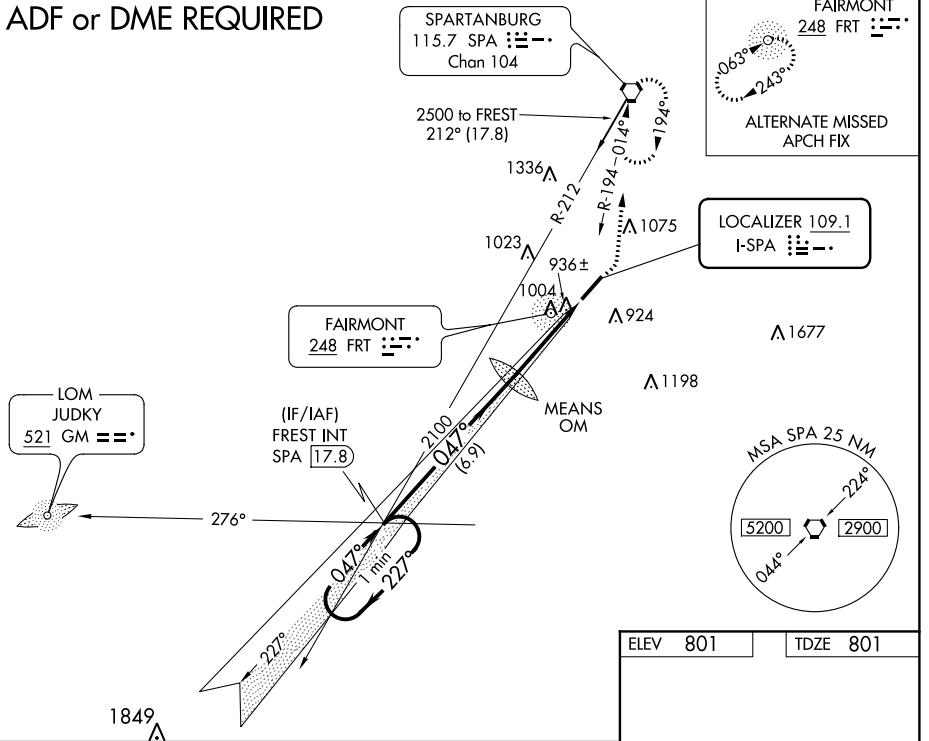
LOC I-SPA 109.1	APP CRS 047°	Rwy Idg 5852
		TDZE 801
		Apt Elev 801

SPARTANBURG DOWNTOWN MEMORIAL/SIMPSON FIELD (SPA)

<p>▽ When local altimeter setting not received, use Greer altimeter setting and increase all DA 53 feet and all MDA 60 feet; increase S-LOC 5 Cat C and D visibility $\frac{1}{8}$ mile.</p>	<p>MALSR</p>	<p>MISSED APPROACH: Climb to 1300 then climbing left turn to 3000 direct SPA VORTAC and hold.</p>
--	---------------------	--

AWOS-3 133.925	GREER APP CON ★ 119.4 350.2	CLNC DEL 120.55	UNICOM 123.0 (CTAF) 0
--------------------------	---------------------------------------	---------------------------	--

ADF or DME REQUIRED



ELEV 801	TDZE 801
----------	----------

862 Δ

3852 x 100

047° 3.8 NM from FAF

HIRL Rwy 5-23 **0**

FAF to MAP 3.8 NM					
Knots	60	90	120	150	180
Min:Sec	3:48	2:32	1:54	1:31	1:16

CATEGORY	A	B	C	D
S-ILS 5	1001 $\frac{1}{2}$		200 (200- $\frac{1}{2}$)	
S-LOC 5	1200- $\frac{1}{2}$	399 (400- $\frac{1}{2}$)	1200- $\frac{3}{4}$	399 (400- $\frac{3}{4}$)
CIRCLING	1320-1	519 (600-1)	1320-1 $\frac{1}{2}$	1380-2
			519 (600-1 $\frac{1}{2}$)	579 (600-2)

ILS or LOC RWY 5

SE-2: 30 JAN 2020 to 27 FEB 2020

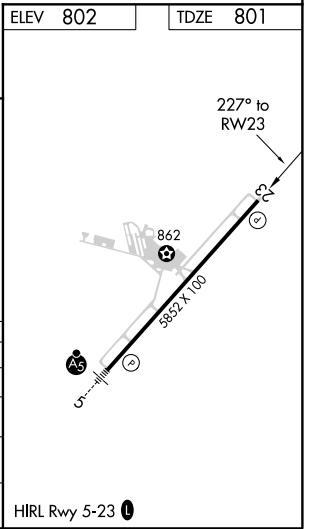
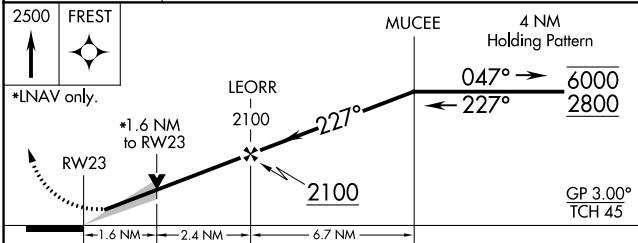
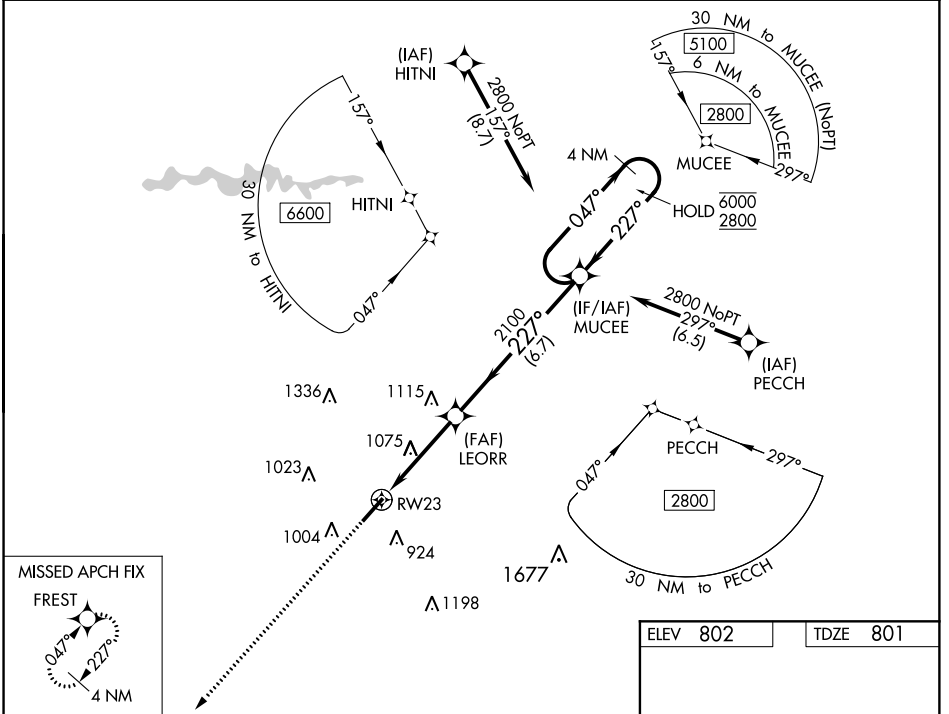
SE-2: 30 JAN 2020 to 27 FEB 2020

RNAV (GPS) RWY 23

SPARTANBURG DOWNTOWN MEMORIAL/SIMPSON FIELD (SPA)

WAAS CH 65926 W23A	APP CRS 227°	Rwy Idg TDZE Apt Elev	5852 801 802
--	------------------------	-----------------------------	---

RNP APCH.		MISSED APPROACH: Climb to 2500 direct FREST and hold.	
AWOS-3 133.925	GREER APP CON * 119.4 350.2	CLNC DEL 120.55	UNICOM 123.0 (CTAF) 1



CATEGORY	A	B	C	D
LPV DA		1001-3/4	200 (200-3/4)	
RNAV/VNAV DA		1090-7/8	289 (300-7/8)	
RNAV MDA	1340-1	539 (600-1)	1340-1 1/2	539 (600-1 1/2)
C CIRCLING	1340-1	538 (600-1)	1380-1 1/2 578 (600-1 1/2)	1420-2 618 (700-2)

RNAV (GPS) RWY 23

SE-2, 30 JAN 2020 to 27 FEB 2020

SE-2, 30 JAN 2020 to 27 FEB 2020

RNAV (GPS) RWY 5

SPARTANBURG DOWNTOWN MEMORIAL/SIMPSON FIELD (SPA)

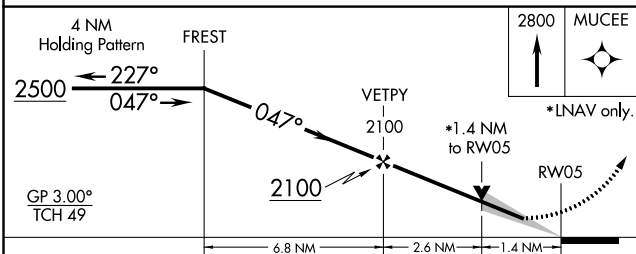
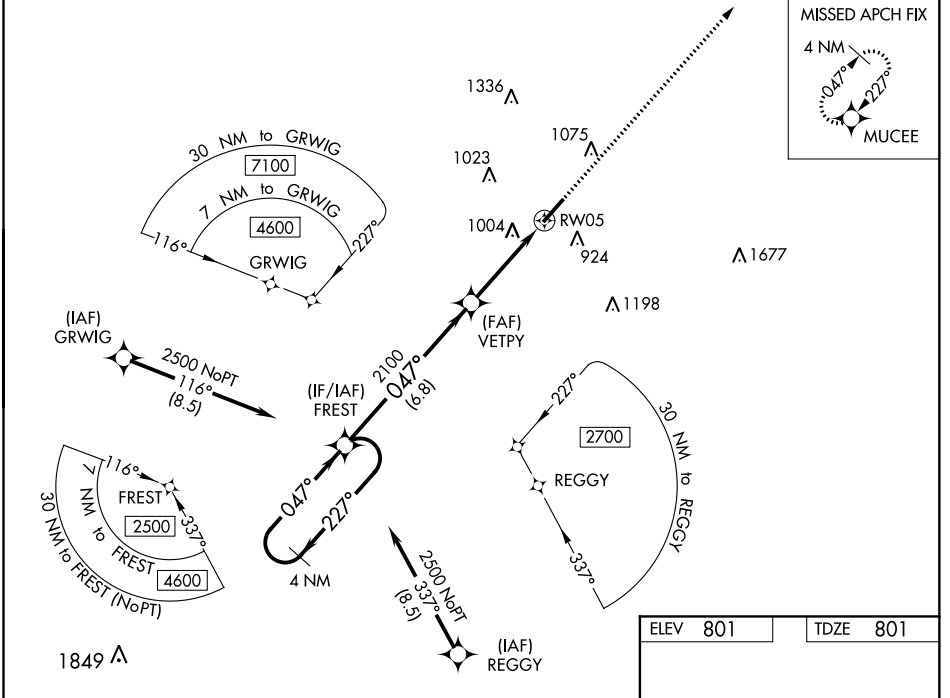
WAAS CH 61226 W05A	APP CRS 047°	Rwy Idg TDZE Apt Elev	5852 801 801
--	------------------------	-----------------------------	---

⚠ For un compensated Baro-VNAV systems, LNAV/VNAV NA below -16°C (4°F) or above 39°C (102°F). DME/DME RNP-0.3 NA. VDP and Baro-VNAV NA when using Greer altimeter setting. When local altimeter setting not received, use Greer altimeter setting and increase all DA 53 feet and all MDA 60 feet; increase LNAV/VNAV all Cats visibility 1/4 mile and LNAV Cat C and D and Circling Cat C visibility 1/8 mile.

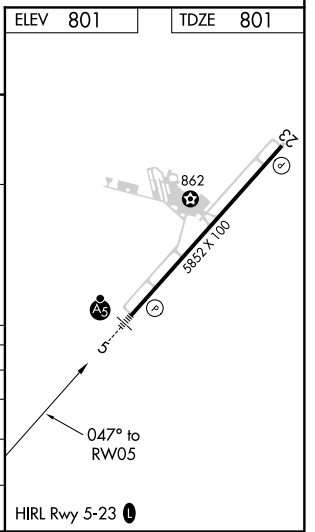
MALSRL

MISSED APPROACH:
Climb to 2800 direct
MUCEE and hold.

AWOS-3 133.925	GREER APP CON * 119.4 350.2	CLNC DEL 120.55	UNICOM 123.0 (CTAF)
--------------------------	---------------------------------------	---------------------------	-------------------------------



CATEGORY	A	B	C	D
LPV DA		1001-1/2	200 (200-1/2)	
LNAV/VNAV DA		1339-1 3/8	538 (600-1 3/8)	
LNAV MDA	1280-1/2	479 (500-1/2)	1280-1	479 (500-1)
CIRCLING	1320-1	519 (600-1)	1320-1 1/2	1380-2
			519 (600-1 1/2)	579 (600-2)



SE-2: 30 JAN 2020 to 27 FEB 2020

SE-2: 30 JAN 2020 to 27 FEB 2020

RNAV (GPS) RWY 5