

WAAS CH <b>58003</b> <b>W14A</b>	APP CRS <b>136°</b>	Rwy Idg <b>5502</b> TDZE <b>583</b> Apt Elev <b>583</b>
--	------------------------	---

# RNAV (GPS) RWY 14

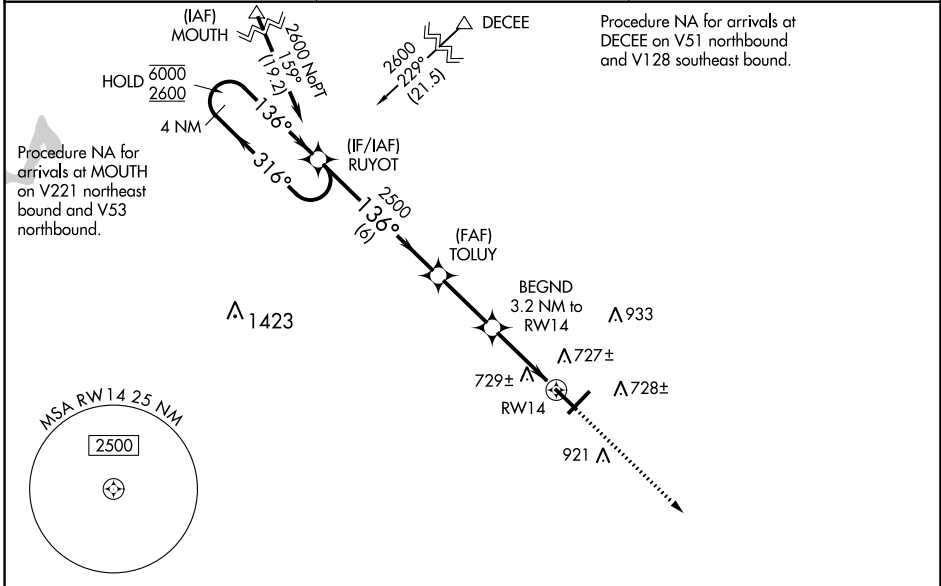
FREEMAN MUNI (SE.R)

RNP APCH - GPS.

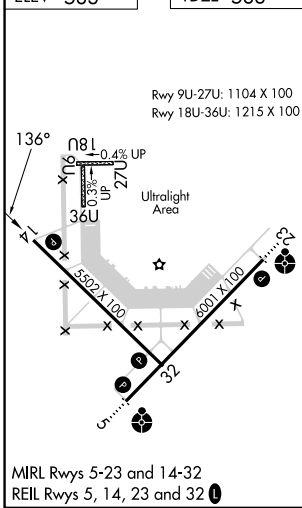
**NA** Baro-VNAV and VDP NA when using Louisville Muhammad Ali Intl altimeter setting. Rwy 14 helicopter visibility reduction below 3/4 SM NA. For uncompensated Baro-VNAV systems, LNAV/VNAV NA below -16°C or above 54°C. When local altimeter setting not received, use Louisville Muhammad Ali Intl altimeter setting and increase all DA 117 feet and all MDA 120 feet; increase LPV and LNAV/VNAV all Cats and LNAV and Circling Cats C/D visibility 1/4 SM.

**MISSED APPROACH:**  
Climb to 2400 direct ZEKAM and hold.

AWOS-3 <b>119.425</b>	INDIANAPOLIS CENTER <b>124.775 269.025</b>	UNICOM <b>122.8 (CTAF)</b>
--------------------------	---	-------------------------------



ELEV <b>583</b>	TDZE <b>583</b>
-----------------	-----------------



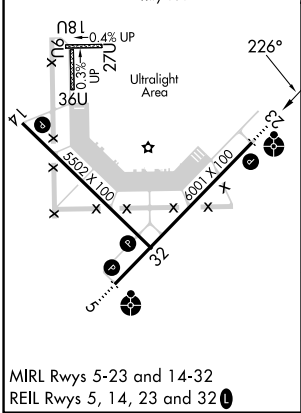
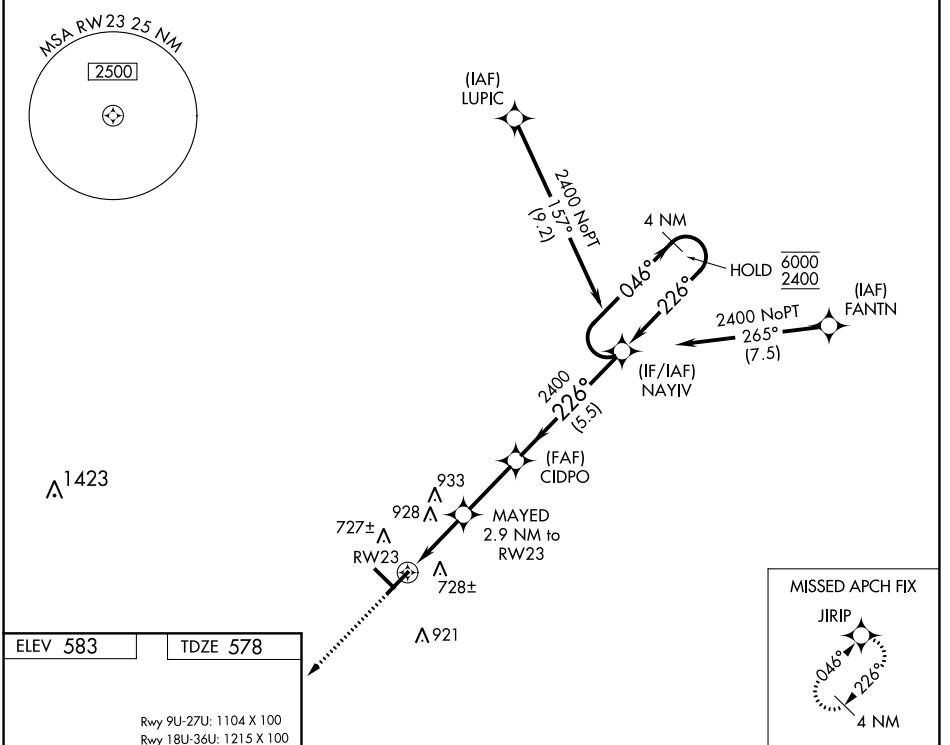
4 NM Holding Pattern	RUYOT	TOLUY	BEGND	ZEKAM
6000	2600	2500	1640	2400
GP 3.00° TCH 40		3.2 NM to RWY 14	1.2 NM to RWY 14	
6 NM		2.7 NM	2 NM	1.2 NM
CATEGORY	A	B	C	D
LPV DA		860-7/8	277 (300-7/8)	
LNAV/VNAV DA		1037-13/8	454 (500-13/8)	
LNAV MDA	980-1	397 (400-1)	980-1 1/8	397 (400-1 1/8)
<b>C</b> CIRCLING	1040-1 457 (500-1)	1100-1 517 (600-1)	1300-2 717 (800-2)	1300-2 1/4 717 (800-2 1/4)

WAAS CH <b>48903</b> <b>W23A</b>	APP CRS <b>226°</b>	Rwy Idg TDZE Apt Elev	<b>6001</b> <b>578</b> <b>583</b>
--	------------------------	-----------------------------	---

# RNAV (GPS) RWY 23

FREEMAN MUNI (SE.R)

RNP APCH - GPS.		ODALS	MISSED APPROACH: Climb to 2500 direct JIRIP and hold.
AWOS-3 <b>119.425</b>		INDIANAPOLIS CENTER <b>124.775 269.025</b>	UNICOM <b>122.8 (CTAF) 0</b>



2500	JIRIP	VGSI and RNAV glidepath not coincident (VGSI Angle 3.00/TCH 33).	4 NM Holding Pattern
↑	★		
		MAYED 2.9 NM to RWY 23 1.7 NM to RWY 23	CIDPO 2400 NAYIV 226° 2400 046° 6000 2400 GP 3.00° TCH 45
		1.7 NM	1.2 NM
		2.7 NM	5.5 NM
CATEGORY	A	B	C
LPV DA	855-1		277 (300-1)
LNAV/VNAV DA	1020-1 <sup>1</sup> / <sub>8</sub>		442 (500-1 <sup>1</sup> / <sub>8</sub> )
LNAV MDA	1160-1	582 (600-1)	1160-1 <sup>1</sup> / <sub>8</sub> 582 (600-1 <sup>1</sup> / <sub>8</sub> )
☑ CIRCLING	1160-1	577 (600-1)	1240-1 <sup>3</sup> / <sub>4</sub> 657 (700-1 <sup>3</sup> / <sub>4</sub> ) 1240-2 657 (700-2)

EC-2, 22 FEB 2024 to 21 MAR 2024

EC-2, 22 FEB 2024 to 21 MAR 2024

WAAS CH <b>99403</b> <b>W32A</b>	APP CRS <b>316°</b>	Rwy Idg <b>5502</b> TDZE <b>574</b> Apt Elev <b>583</b>
--	------------------------	---

# RNAV (GPS) RWY 32

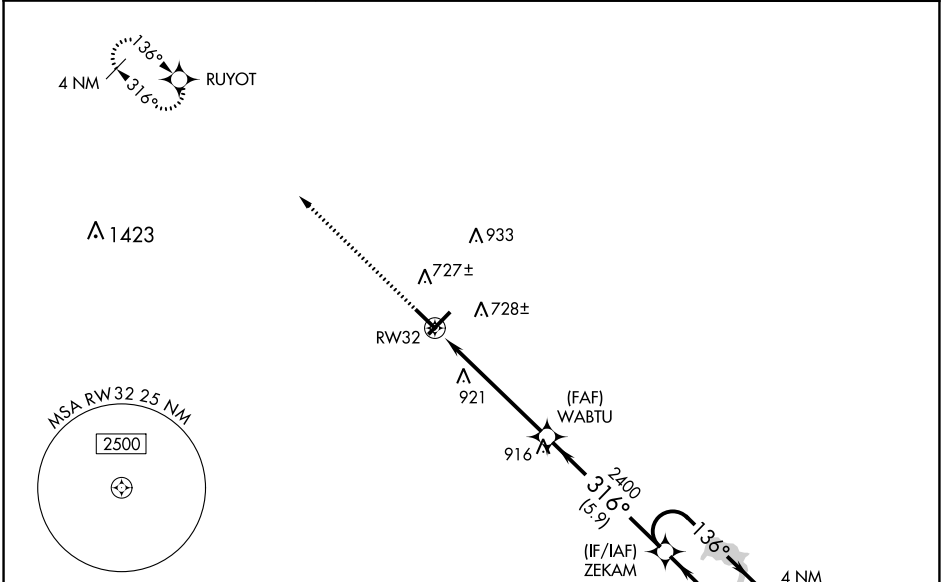
FREEMAN MUNI (SE.R)

RNP APCH - GPS.

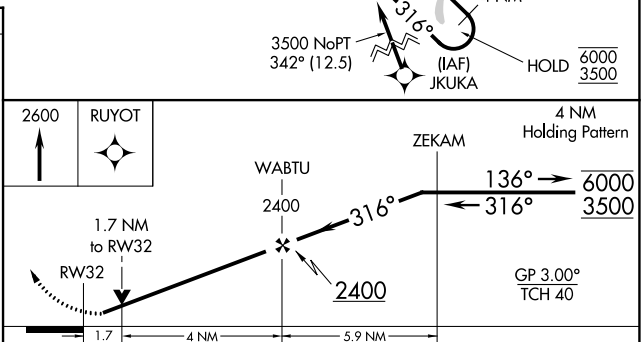
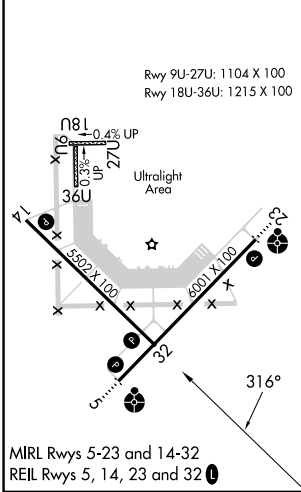
**NA** Baro-VNAV and VDP NA when using Louisville Muhammad Ali Intl altimeter setting. Rwy 32 helicopter visibility reduction below  $\frac{3}{4}$  SM NA. For uncompensated Baro-VNAV systems, LNAV/VNAV NA below -16°C or above 54°C. When local altimeter setting not received, use Louisville Muhammad Ali Intl altimeter setting and increase LPV DA to 979 feet and all visibilities  $\frac{1}{2}$  SM; increase LNAV/VNAV DA to 1230 feet and all visibilities  $\frac{3}{8}$  SM; increase all MDAs 120 feet and LNAV visibility Cat C/D  $\frac{3}{8}$  SM, and Circling visibility Cat C/D  $\frac{1}{2}$  SM.

**MISSED APPROACH:**  
Climb to 2600 direct RUYOT and hold.

AWOS-3 <b>119.425</b>	INDIANAPOLIS CENTER <b>124.775 269.025</b>	UNICOM <b>122.8 (CTAF)</b>
--------------------------	---	-------------------------------



ELEV 583	TDZE 574
----------	----------



CATEGORY	A	B	C	D
LPV DA	859-1 285 (300-1)			
LNAV/VNAV DA	1110-1½ 536 (600-1½)			
LNAV MDA	1140-1	566 (600-1)	1140-1½	566 (600-1½)
<b>C</b> CIRCLING	1140-1	557 (600-1)	1300-2 717 (800-2)	1300-2¼ 717 (800-2¼)

EC-2, 22 FEB 2024 to 21 MAR 2024

EC-2, 22 FEB 2024 to 21 MAR 2024

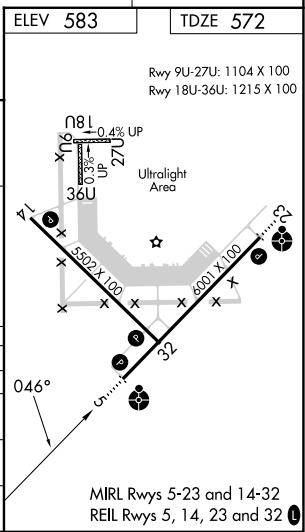
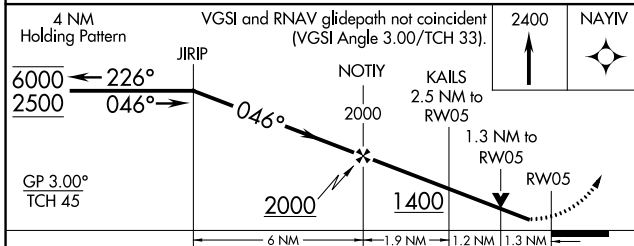
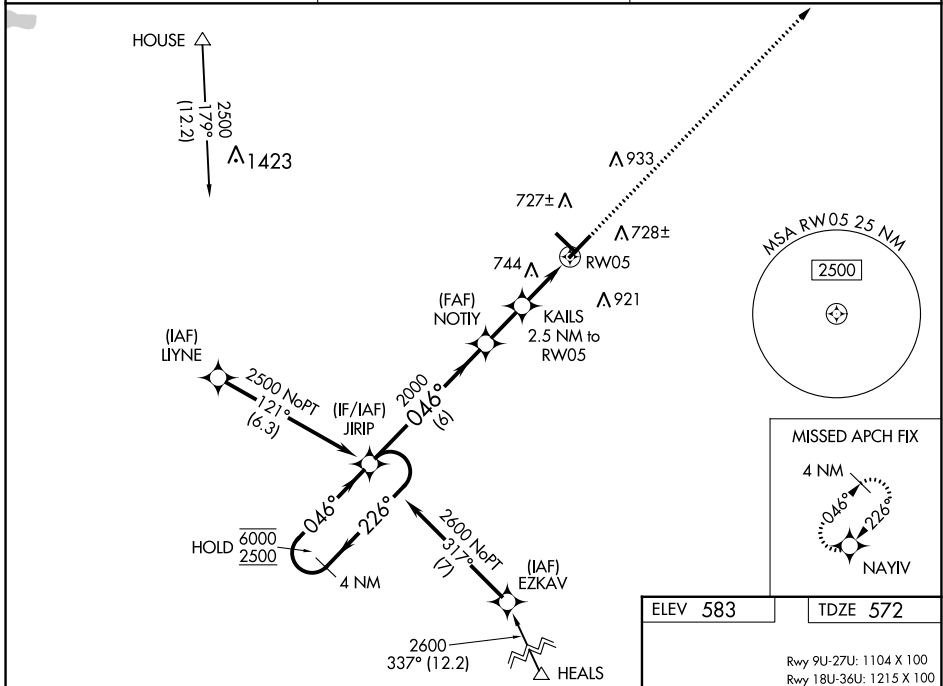
WAAS CH <b>53704</b> <b>W05A</b>	APP CRS <b>046°</b>	Rwy Idg TDZE Apt Elev	<b>6001</b> <b>572</b> <b>583</b>
--	------------------------	-----------------------------	---

# RNAV (GPS) RWY 5

FREEMAN MUNI (SE.R)

RNP APCH - GPS.		ODALS	MISSED APPROACH: Climb to 2400 direct NAYIV and hold.
<p>▼ Rwy 5 helicopter visibility reduction below 3/4 SM NA. Inop table does not apply to LPV all Cats and LNAV Cats A/B. For uncompensated Baro-VNAV systems, LNAV/VNAV NA below -16°C or above 54°C. For inop ALS, increase LNAV/VNAV Cats C/D visibility to 1 3/8 SM.</p> <p>▲ NA</p>			

AWOS-3 <b>119.425</b>	INDIANAPOLIS CENTER <b>124.775 269.025</b>	UNICOM <b>122.8 (CTAF)</b>
--------------------------	---	-------------------------------



CATEGORY	A	B	C	D
LPV DA		834-1	262 (300-1)	
LNAV/VNAV DA		1017-1 1/8	445 (500-1 1/8)	
LNAV MDA	1000-1	428 (500-1)	1000-1 1/8	428 (500-1 1/8)
CIRCLING	1080-1 497 (500-1)	1140-1 557 (600-1)	1240-1 1/4 657 (700-1 1/4)	1240-2 657 (700-2)

EC-2, 22 FEB 2024 to 21 MAR 2024

EC-2, 22 FEB 2024 to 21 MAR 2024