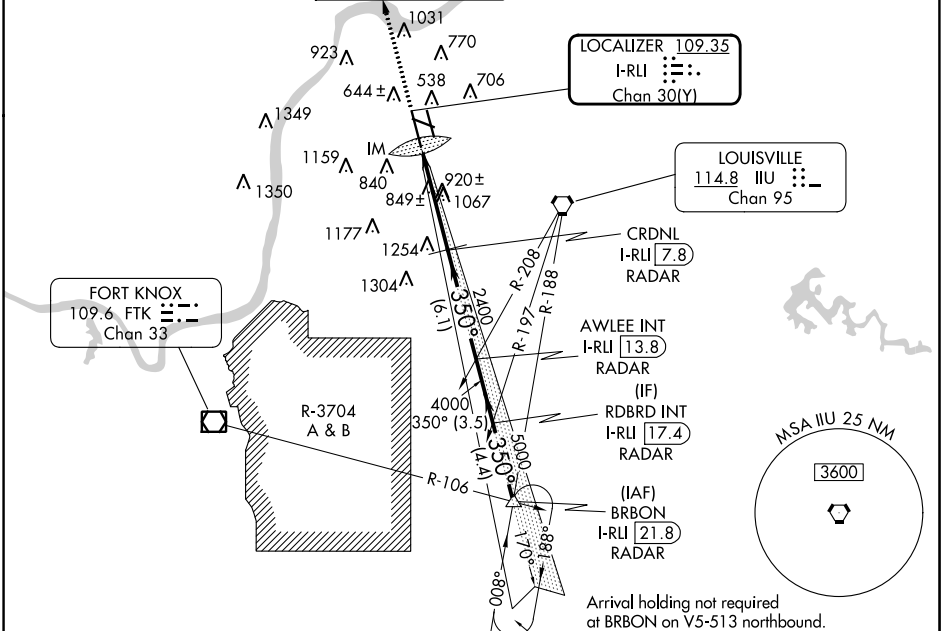


LOC/DME I-RLI 109.35	APP CRS 350°	Rwy Idg TDZE Apt Elev	10000 464 501
Chan 30(Y)			

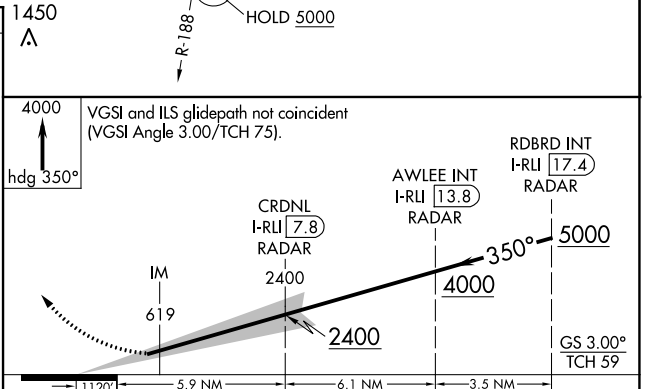
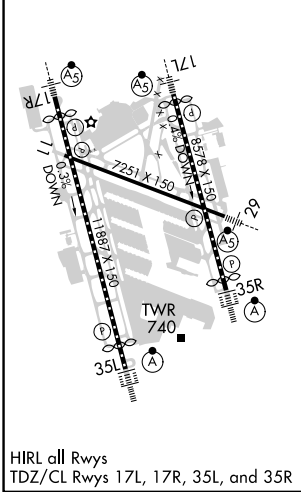
ILS RWY 35L (CAT II & III)

LOUISVILLE MUHAMMAD ALI INTL (SDF)

RADAR required.			ALSIF-2	MISSED APPROACH: Climb to 4000 on heading 350°, expect RADAR vectors.	
<p>Simultaneous approach authorized. CAT II: RVR 1000 authorized with specific OPSPEC, MSPEC, or LOA approval and use of autoland or HUD to touchdown.</p>					
D-ATIS 118.725	LOUISVILLE APP CON 132.075 327.0	LOUISVILLE TOWER 124.2 257.8	GND CON 121.7 348.6	CLNC DEL 126.1 275.8	CPDLC



ELEV 501	D	TDZE 464
-----------------	----------	-----------------



CATEGORY	A	B	C	D
S-ILS 35L	CAT II RA 99/12 100 DA 564			
S-ILS 35L	CAT III RVR 600			

CATEGORY II & III ILS - SPECIAL AIRCREW & AIRCRAFT CERTIFICATION REQUIRED

SE-1, 22 FEB 2024 to 21 MAR 2024

SE-1, 22 FEB 2024 to 21 MAR 2024

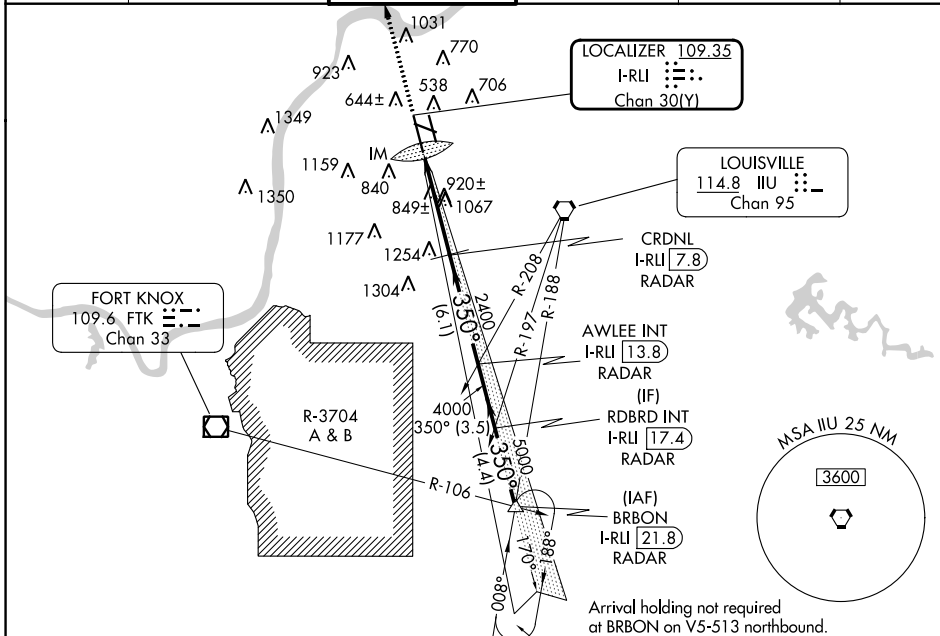
LOC/DME I-RLI 109.35	APP CRS 350°	Rwy Idg TDZE 10000 464
Chan 30 (Y)		Apt Elev 501

ILS RWY 35L (SA CAT I)

LOUISVILLE MUHAMMAD ALI INTL (SDF')

RADAR required.		ALSF-2	MISSED APPROACH: Climb to 4000 on heading 350°, expect RADAR vectors.	
Simultaneous approach authorized. Requires specific OPSPEC, MSPEC, or LOA approval and use of HUD to DH.				

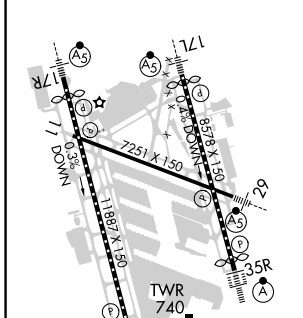
D-ATIS 118.725	LOUISVILLE APP CON 132.075 327.0	LOUISVILLE TOWER 124.2 257.8	GND CON 121.7 348.6	CLNC DEL 126.1 275.8	CPDLC
--------------------------	--	--	-------------------------------	--------------------------------	-------



SE-1, 22 FEB 2024 to 21 MAR 2024

SE-1, 22 FEB 2024 to 21 MAR 2024

ELEV 501	D	TDZE 464
-----------------	----------	-----------------



<p>4000</p> <p>hdg 350°</p> <p>↑</p>	<p>VGSI and ILS glidepath not coincident (VGSI Angle 3.00°/TCH 75).</p>										
	<p>RDBRD INT I-RLI 17.4 RADAR</p> <p>AWLEE INT I-RLI 13.8 RADAR</p> <p>CRDNL I-RLI 7.8 RADAR</p> <p>IM</p> <p>2400</p> <p>4000</p> <p>5000</p> <p>350°</p> <p>GS 3.00° TCH 59</p>										
<p>1120'</p> <p>5.9 NM</p> <p>6.1 NM</p> <p>3.5 NM</p>											
<table border="1"> <tr> <th>CATEGORY</th> <td>A</td> <td>B</td> <td>C</td> <td>D</td> </tr> <tr> <td>S-ILS 35L</td> <td colspan="4">RA 154/14 150 DA 614</td> </tr> </table>	CATEGORY	A	B	C	D	S-ILS 35L	RA 154/14 150 DA 614				
CATEGORY	A	B	C	D							
S-ILS 35L	RA 154/14 150 DA 614										
<p>SA CATEGORY I ILS - SPECIAL AIRCREW & AIRCRAFT CERTIFICATION REQUIRED</p>											

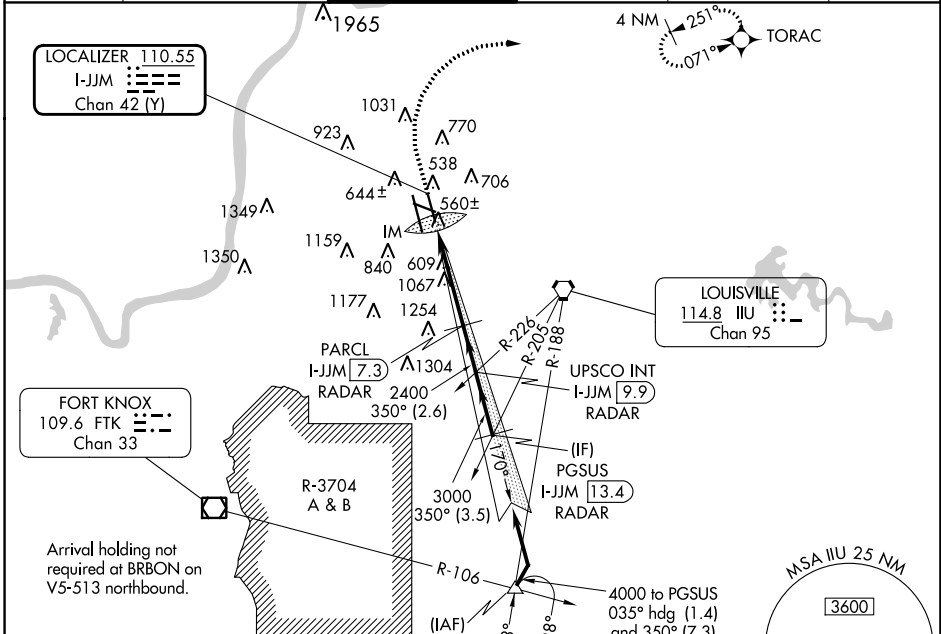
LOC/DME I-JJM 110.55	APP CRS 350°	Rwy Idg 7800
Chan 42 (Y)	TDZE 480	Apt Elev 501

ILS RWY 35R (CAT II & III)

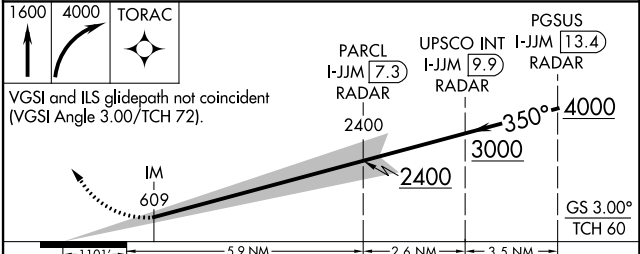
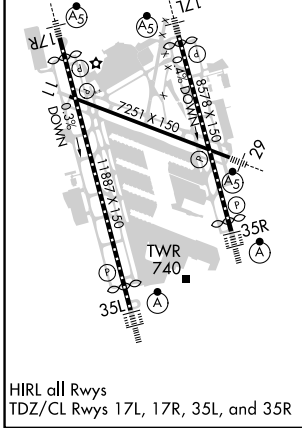
LOUISVILLE MUHAMMAD ALI INTL (SDF)

RNAV 1-GPS required.	ALSIF-2	MISSED APPROACH: Climb to 1600 then climbing right turn to 4000 direct TORAC and hold.
Simultaneous approach authorized. Cat II: RVR 1000 authorized with specific OPSPEC, MSPEC, or LOA approval and use of autoland or HUD to touchdown.		

D-ATIS 118.725	LOUISVILLE APP CON 132.075 327.0	LOUISVILLE TOWER 124.2 257.8	GND CON 121.7 348.6	CLNC DEL 126.1 275.8	CPDLC
--------------------------	--	--	-------------------------------	--------------------------------	-------



ELEV 501	D	TDZE 480
----------	----------	----------



CATEGORY	A	B	C	D
S-ILS 35R	CAT II		RA 100/12	100 DA 580
S-ILS 35R	CAT III		RVR 06	

CATEGORY II & III ILS - SPECIAL AIRCREW & AIRCRAFT CERTIFICATION REQUIRED

SE-1, 22 FEB 2024 to 21 MAR 2024

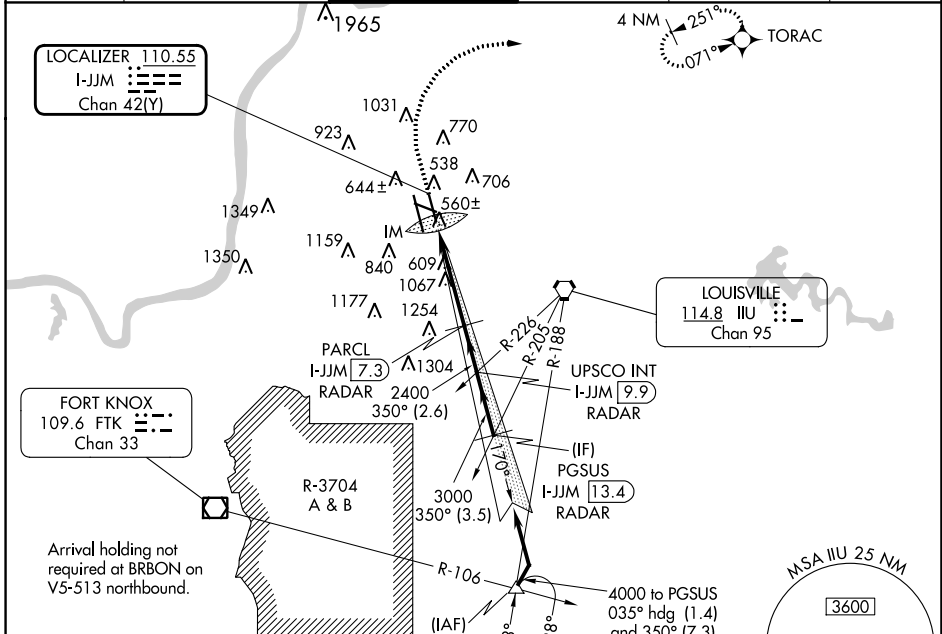
SE-1, 22 FEB 2024 to 21 MAR 2024

LOC/DME 1-JJM 110.55 Chan 42(Y)	APP CRS 350°	Rwy Idg TDZE Apt Elev	7800 480 501
--	------------------------	-----------------------------	---

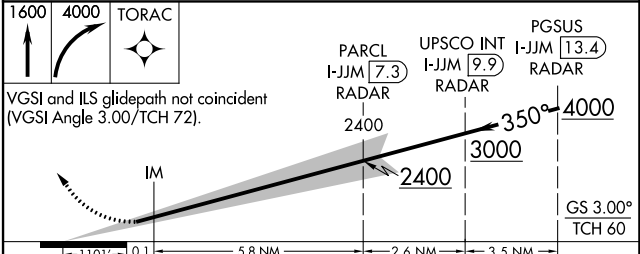
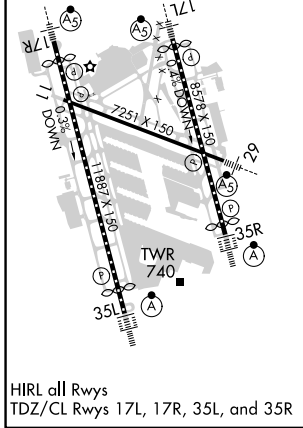
ILS RWY 35R (SA CAT I)
LOUISVILLE MUHAMMAD ALI INTL (SDF')

RNAV 1-GPS required.	ALSIF-2	MISSED APPROACH: Climb to 1600 then climbing right turn to 4000 direct TORAC and hold.
Simultaneous approach authorized. Requires specific OPSPEC, MSPEC, or LOA approval and use of HUD to DH.		

D-ATIS 118.725	LOUISVILLE APP CON 132.075 327.0	LOUISVILLE TOWER 124.2 257.8	GND CON 121.7 348.6	CLNC DEL 126.1 275.8	CPDLC
--------------------------	--	--	-------------------------------	--------------------------------	-------



ELEV 501	D	TDZE 480
----------	----------	----------



CATEGORY	A	B	C	D
S-ILS 35R	RA 162/14 150 DA 630			

SA CATEGORY I ILS- SPECIAL AIRCREW & AIRCRAFT CERTIFICATION REQUIRED

SE-1, 22 FEB 2024 to 21 MAR 2024

SE-1, 22 FEB 2024 to 21 MAR 2024


LOC/DME I-PKI 111.95	APP CRS 170°	Rwy ldg 7800
Chan 56 (Y)	TDZE 499	Apt Elev 501

ILS or LOC RWY 17L

LOUISVILLE MUHAMMAD ALI INTL (SDF)

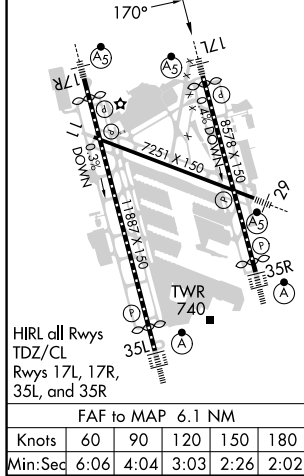
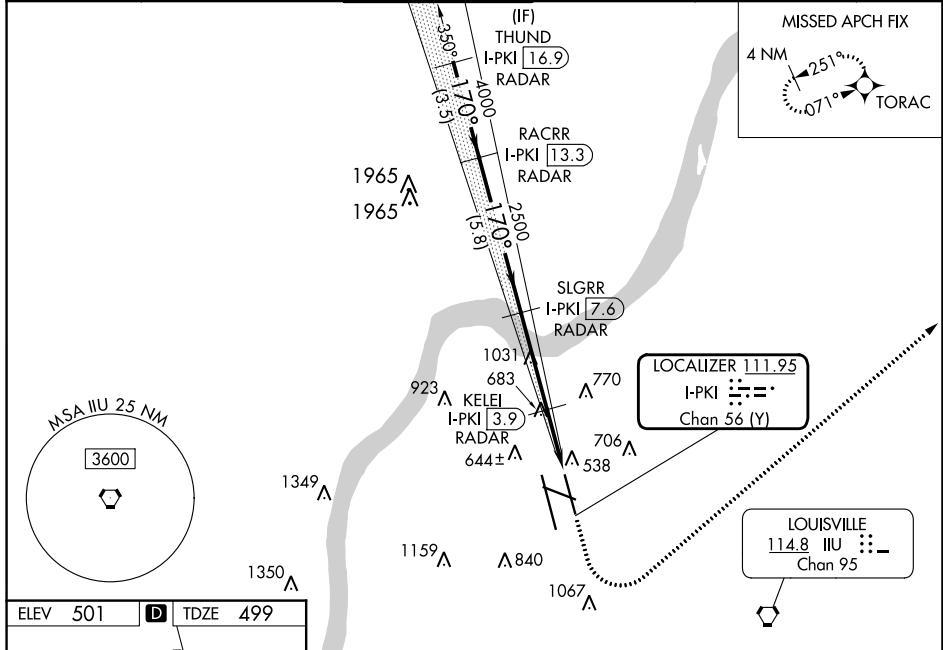
RNAV 1-GPS required.
DME or RADAR required.

⚠ Circling Rwy 11 NA at night. Simultaneous approach authorized.
⚠ For inop ALS, increase S-LOC 17L Cat C/D visibility to 1 3/8 SM.




MALSR 

MISSED APPROACH: Climb to 1600 then climbing left turn to 4000 direct TORAC and hold.

D-ATIS 118.725	LOUISVILLE APP CON 132.075 327.0	LOUISVILLE TOWER 124.2 257.8	GND CON 121.7 348.6	CLNC DEL 126.1 275.8	CPDLC
--------------------------	--	--	-------------------------------	--------------------------------	-------



VGSI and ILS glidepath not coincident (VGSI Angle 3.32/TCH 71).

	1600	4000	TORAC
			
	*LOC only.		
	5000	4000	2500
	170°	170°	170°
	3.5 NM	5.8 NM	3.6 NM
	1.3 NM	1.2 NM	
CATEGORY	A	B	C
S-ILS 17L	699/18 200 (200-1/2)		
S-LOC 17L	1000/24	501 (500-1/2)	1000/55 501 (500-1)
C CIRCLING	1040-1 539 (600-1)	1140-1 639 (700-1)	1160-1 3/4 659 (700-1 3/4)
	1400-3 899 (900-3)		

SE-1, 22 FEB 2024 to 21 MAR 2024

SE-1, 22 FEB 2024 to 21 MAR 2024

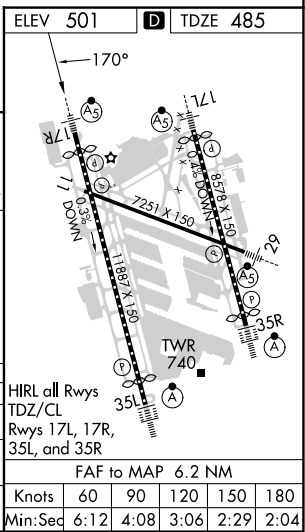
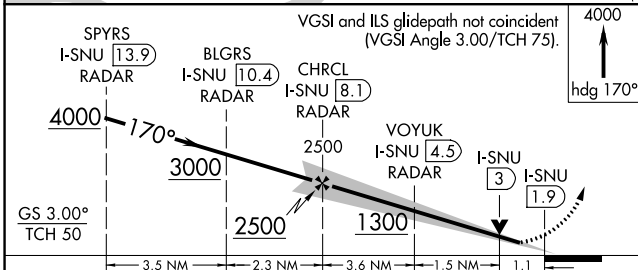
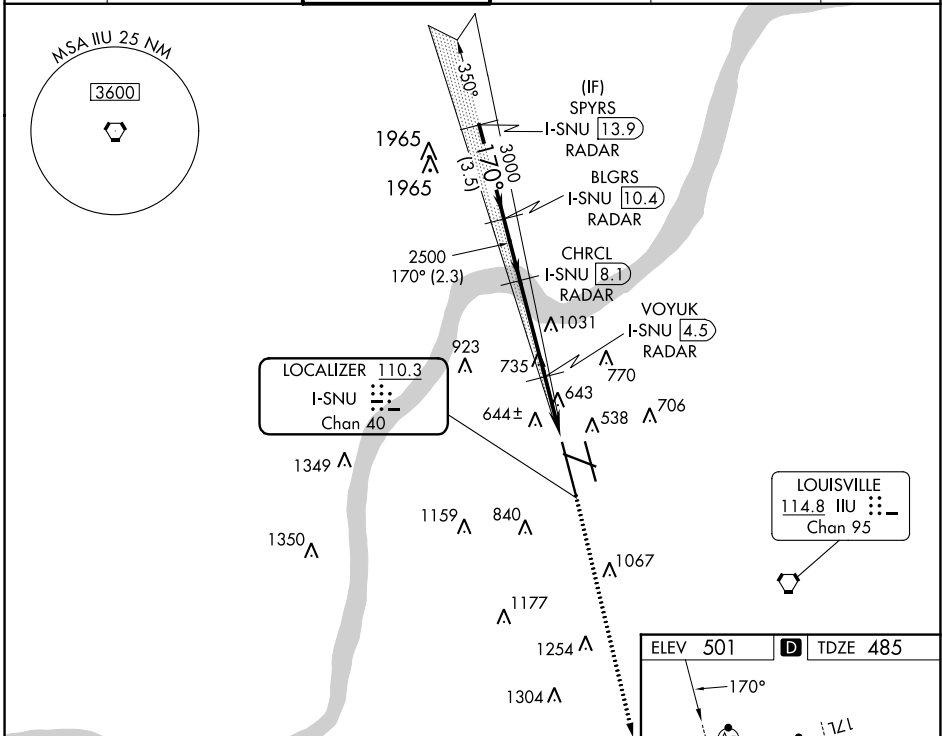
LOC/DME I-SNU 110.3 Chan 40	APP CRS 170°	Rwy Idg 10000 TDZE 485 Apt Elev 501
---	------------------------	--

ILS or LOC RWY 17R

LOUISVILLE MUHAMMAD ALI INTL (SDF)

RADAR required.		MALSR 	MISSED APPROACH: Climb to 4000 on heading 170°, expect RADAR vectors.
Circling Rwy 11 NA at night. Simultaneous approach authorized. For inop ALS, increase S-LOC 17R Cat C/D visibility to RVR 6000.			

D-ATIS 118.725	LOUISVILLE APP CON 132.075 327.0	LOUISVILLE TOWER 124.2 257.8	GND CON 121.7 348.6	CLNC DEL 126.1 275.8	CPDLC
--------------------------	--	--	-------------------------------	--------------------------------	-------



CATEGORY	A	B	C	D
S-ILS 17R	685/18 200 (200-½)			
S-LOC 17R	900/24	415 (500-½)	900/40	415 (500-¾)
CIRCLING	1040-1	1140-1	1160-1¾	1400-3
	539 (600-1)	639 (700-1)	659 (700-1¾)	899 (900-3)

SE-1, 22 FEB 2024 to 21 MAR 2024

SE-1, 22 FEB 2024 to 21 MAR 2024

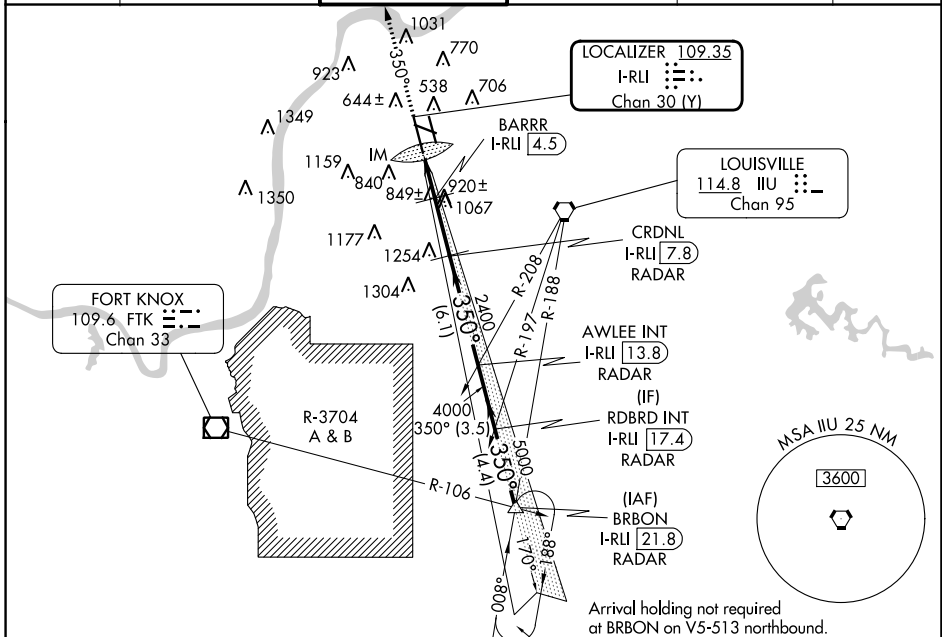
LOC/DME I-RLI 109.35	APP CRS 350°	Rwy Idg TDZE 10000 464
Chan 30 (Y)		Apt Elev 501

ILS or LOC RWY 35L

LOUISVILLE MUHAMMAD ALI INTL (SDF)

DME required for LOC only. RADAR required.		ALS F-2	MISSED APPROACH: Climb to 4000 on heading 350°, expect RADAR vectors.
⚠ Circling Rwy 11 NA at night. Simultaneous approach authorized. ⚠ For inop ALS, increase S-LOC 35L Cat C/D visibility to 1¼ SM.			

D-ATIS 118.725	LOUISVILLE APP CON 132.075 327.0	LOUISVILLE TOWER 124.2 257.8	GND CON 121.7 348.6	CLNC DEL 126.1 275.8	CPDLC
--------------------------	--	--	-------------------------------	--------------------------------	-------



ELEV 501 TDZE 464

TDZ/CL Rwy 17L, 17R, 35L, and 35R
HIRL all Rwy

FAF to MAP 5.9 NM

Knots	60	90	120	150	180
Min:Sec	5:54	3:56	2:57	2:22	1:58

CIRCLING

1450

4000

VGSI and ILS glidepath not coincident
(VGSI Angle 3.00/TCH 75).

hdg 350°

CRDNL I-RLI 7.8 RADAR	AWLEE INT I-RLI 13.8 RADAR	RDBRD INT I-RLI 17.4 RADAR
BARRR I-RLI 4.5		
I-RLI 3.6		
I-RLI 1.8		

0.1	1.7	0.9 NM	3.2 NM	6.1 NM	3.5 NM
A		B		C	

S-ILS 35L	664/18 200 (200-½)			
S-LOC 35L	1100/24	636 (700-½)	1100-1¾	636 (700-1¾)
CIRCLING	1100-1 599 (600-1)	1140-1 639 (700-1)	1160-1¾ 659 (700-1¾)	1400-3 899 (900-3)

SE-1, 22 FEB 2024 to 21 MAR 2024

SE-1, 22 FEB 2024 to 21 MAR 2024

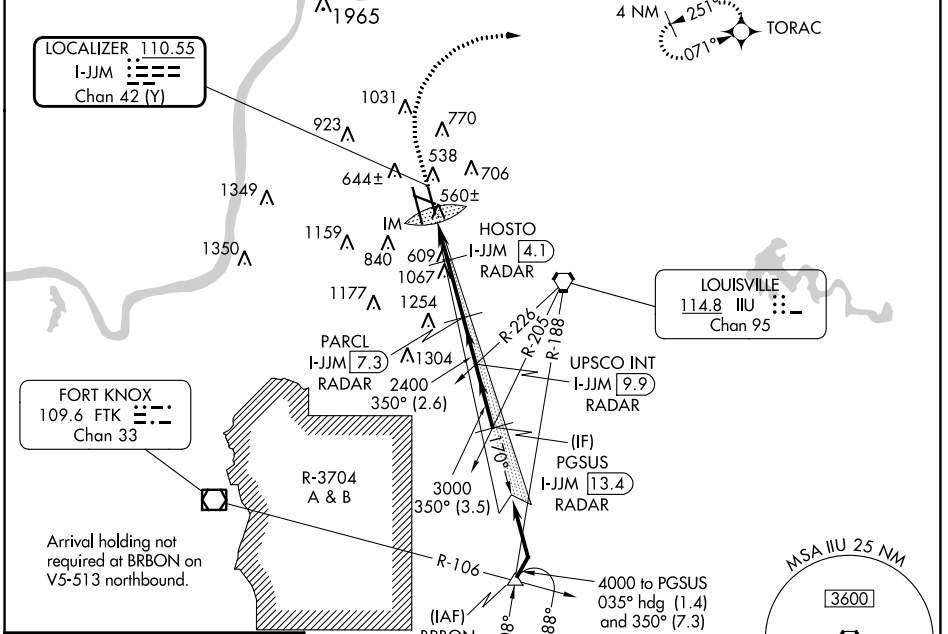
LOC/DME I-JJM 110.55 Chan 42 (Y)	APP CRS 350°	Rwy Idg 7800 TDZE 480 Apt Elev 501
--	------------------------	---

ILS or LOC RWY 35R

LOUISVILLE MUHAMMAD ALI INTL (SDF)

RNAV 1-GPS required. DME or RADAR required for LOC only.		ALSF-2	MISSED APPROACH: Climb to 1600 then climbing right turn to 4000 direct TORAC and hold.
Simultaneous approach authorized. Circling Rwy 11 NA at night.			

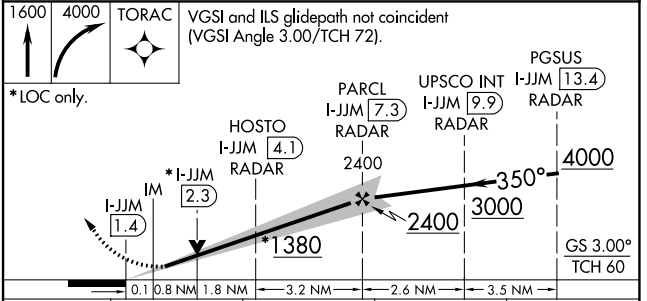
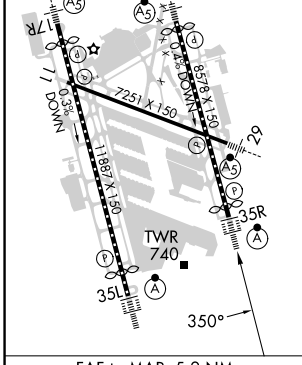
D-ATIS 118.725	LOUISVILLE APP CON 132.075 327.0	LOUISVILLE TOWER 124.2 257.8	GND CON 121.7 348.6	CLNC DEL 126.1 275.8	CPDLC
--------------------------	--	--	-------------------------------	--------------------------------	-------



SE-1, 22 FEB 2024 to 21 MAR 2024

SE-1, 22 FEB 2024 to 21 MAR 2024

ELEV 501	D TDZE 480
TDZ/CL Rwy's 17L, 17R, 35L and 35R HIRL all Rwy's	



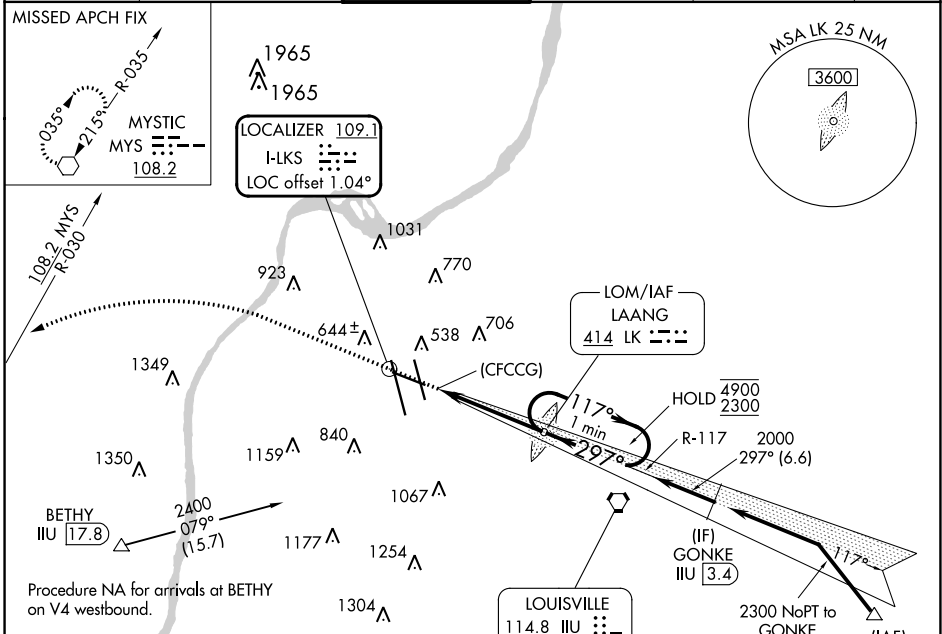
FAF to MAP 5.9 NM		CATEGORY	
Knots	60 90 120 150 180	S-ILS 35R 680/18 200 (200-½)	
Min:Sec	5:54 3:56 2:57 2:22 1:58	S-LOC 35R 820/24 340 (400-½) 820/26 340 (400-½)	
CIRCLING		1040-1 539 (600-1)	1140-1 639 (700-1)
		1160-1¾ 659 (700-1¾)	1400-3 899 (900-3)

LOC I-LKS 109.1	APP CRS 297°	Rwy Idg TDZE Apt Elev	7250 480 501
---------------------------	------------------------	-----------------------------	---

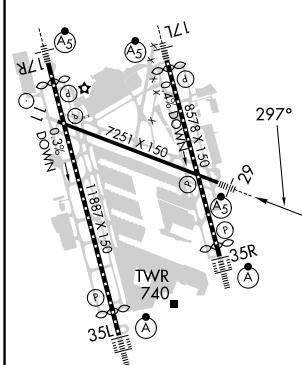
LOC RWY 29

LOUISVILLE MUHAMMAD ALI INTL (SDF')

ADF or DME required.		MALSR		MISSED APPROACH: Climb to 3000 then left turn on MYS VOR R-030 to MYS VOR and hold.	
Circling Rwy 11 NA at night. For inop ALS, increase S-29 Cats C/D visibility to 1½ SM.					
D-ATIS 118.725	LOUISVILLE APP CON 132.075 327.0	LOUISVILLE TOWER 124.2 257.8	GND CON 121.7 348.6	CLNC DEL 126.1 275.8	CPDLC



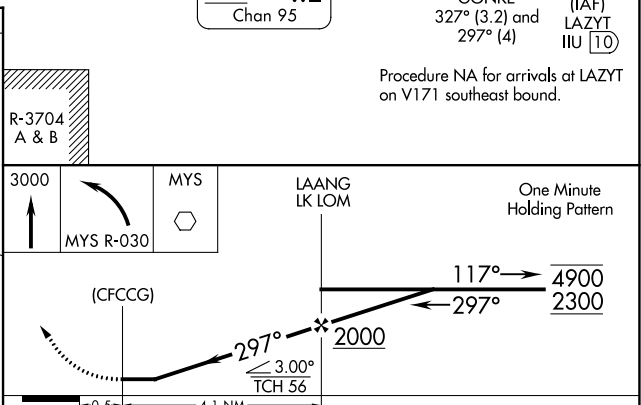
ELEV 501	D	TDZE 480
----------	----------	----------



HIRL all Rwys
TDZ/CL Rwys 17L, 17R, 35L, and 35R

FAF to MAP 4.1 NM

Knots	60	90	120	150	180
Min:Sec	4:06	2:44	2:03	1:38	1:22



CATEGORY	A	B	C	D
S-29	1060/24	580 (600-½)	1060-1¼	580 (600-1¼)
<input checked="" type="checkbox"/> CIRCLING	1060-1 559 (600-1)	1140-1 639 (700-1)	1160-1¾ 659 (700-1¾)	1400-3 899 (900-3)

LOC RWY 29

SE-1, 22 FEB 2024 to 21 MAR 2024

SE-1, 22 FEB 2024 to 21 MAR 2024

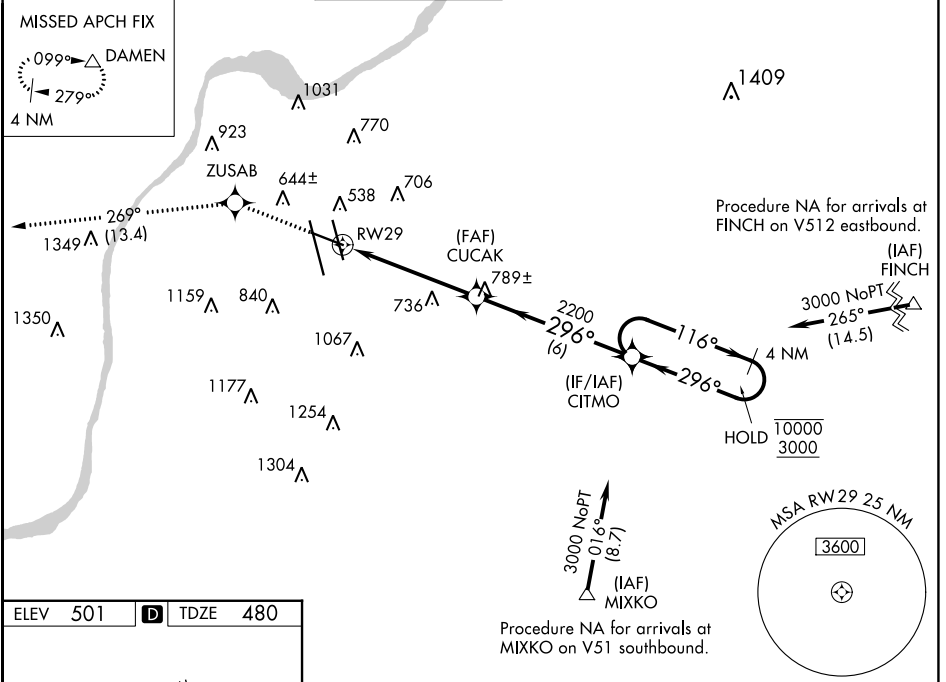
WAAS CH 93643 W29A	APP CRS 296°	Rwy Idg 7250 TDZE 480 Apt Elev 501
--	------------------------	---

RNAV (GPS) RWY 29

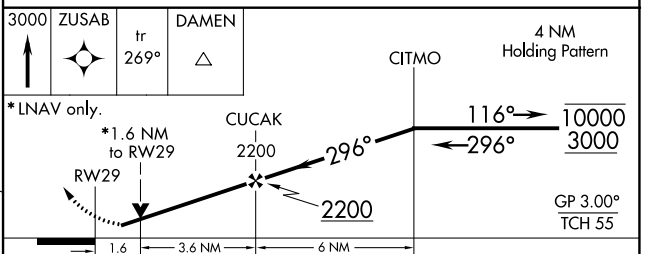
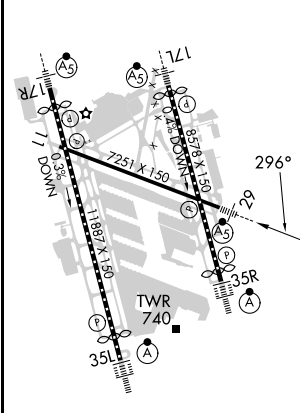
LOUISVILLE MUHAMMAD ALI INTL (SDF)

RNP APCH.		MALSRS	MISSED APPROACH: Climb to 3000 direct ZUSAB and on track 269° to DAMEN and hold.
<p>▼ Circling Rwy 11 NA at night. Rwy 29 helicopter visibility reduction below RVR 4000 NA. For uncompensated Baro-VNAV systems, LNAV/VNAV NA below -16°C or above 54°C. For inop ALS, increase LPV all Cats visibility and LNAV Cats A/B visibility to RVR 5000.</p>			

D-ATIS 118.725	LOUISVILLE APP CON 132.075 327.0	LOUISVILLE TOWER 124.2 257.8	GND CON 121.7 348.6	CLNC DEL 126.1 275.8	CPDLC
--------------------------	--	--	-------------------------------	--------------------------------	-------



ELEV 501	D	TDZE 480
----------	----------	----------



CATEGORY	A	B	C	D
LPV DA		773/40	293 (300-¾)	
LNAV/VNAV DA		943/50	463 (500-1)	
LNAV MDA	1040/40	560 (600-¾)	1040/50 560 (600-1)	1040/60 560 (600-1¼)
C CIRCLING	1040-1 539 (600-1)	1140-1 639 (700-1)	1160-1¼ 659 (700-1¼)	1400-3 899 (900-3)

SE-1, 22 FEB 2024 to 21 MAR 2024

SE-1, 22 FEB 2024 to 21 MAR 2024

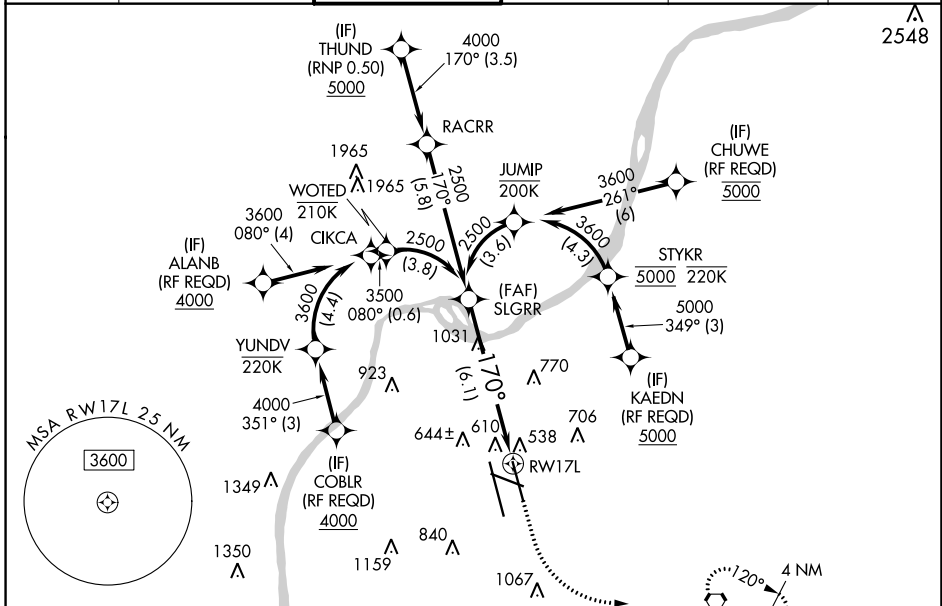
APP CRS	Rwy Idg	7800
170°	TDZE	499
	Apt Elev	501

RNAV (RNP) Z RWY 17L

LOUISVILLE MUHAMMAD ALI INTL (SDF)

RNP AR APCH.	MALSR	MISSED APPROACH: Climb to 1000 then climbing left turn to 3000 direct IIL VORTAC and hold, continue climb-in-hold to 3000.
▼ For uncompensated Baro-VNAV systems, procedure NA below -14°C or above 54°C. For inop ALS, increase RNP 0.30 all Cats visibility to 1 1/2 SM. Simultaneous approach authorized, except for arrivals at CHUWE, KAEDN, ALANB, and COBLR.		

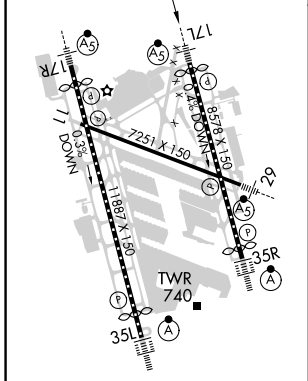
D-ATIS	LOUISVILLE APP CON	LOUISVILLE TOWER	GND CON	CLNC DEL	CPDLC
118.725	132.075 327.0	124.2 257.8	121.7 348.6	126.1 275.8	



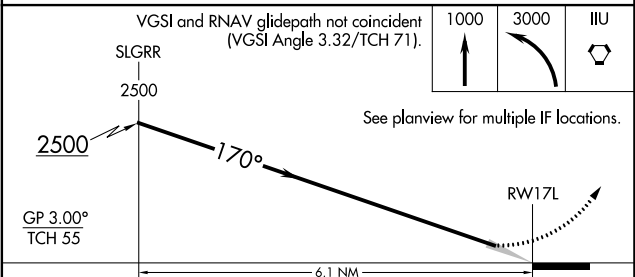
SE-1, 22 FEB 2024 to 21 MAR 2024

SE-1, 22 FEB 2024 to 21 MAR 2024

ELEV 501	TDZE 499
----------	----------



HIRL all Rwys
TDZ/CL Rwys 17L, 17R, 35L and 35R



CATEGORY	A	B	C	D
RNP 0.30 DA		936/50	437 (500-1)	

AUTHORIZATION REQUIRED

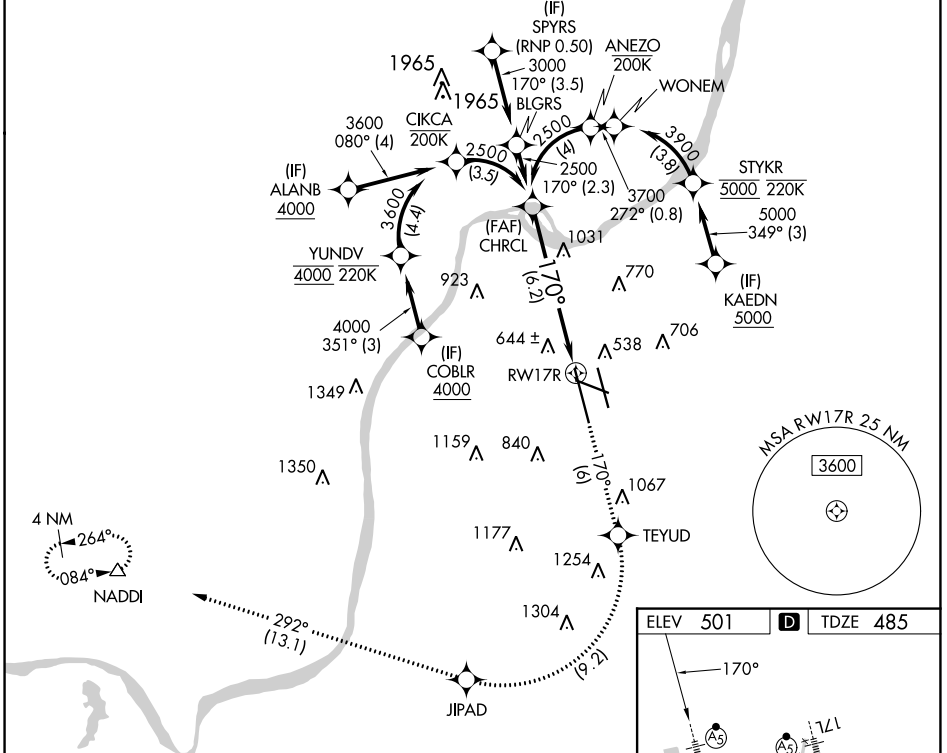
APP CRS	Rwy ldg 10000
170°	TDZE 485
	Apt Elev 501

RNAV (RNP) Z RWY 17R

LOUISVILLE MUHAMMAD ALI INTL (SDF)

RNP AR APCH. RF required.		MALSR	MISSED APPROACH: Climb to 3000 on track 170° to TEYUD right turn to JIPAD and on track 292° to NADDI and hold.
<p>▼ For uncompensated Baro-VNAV systems, procedure NA below -14°C or above 54°C. For inop ALS, increase RNP 0.30 all Cats visibility to 1 3/8 SM. Simultaneous approach authorized, except for arrivals at KAEDN, ALANB, and COBLR.</p>			

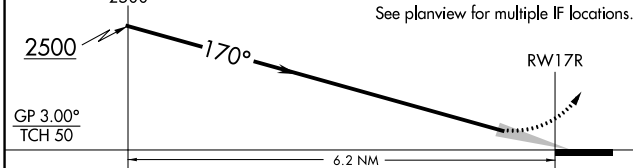
D-ATIS 118.725	LOUISVILLE APP CON 132.075 327.0	LOUISVILLE TOWER 124.2 257.8	GND CON 121.7 348.6	CLNC DEL 126.1 275.8	CPDLC
--------------------------	--	--	-------------------------------	--------------------------------	-------



SE-1, 22 FEB 2024 to 21 MAR 2024

SE-1, 22 FEB 2024 to 21 MAR 2024

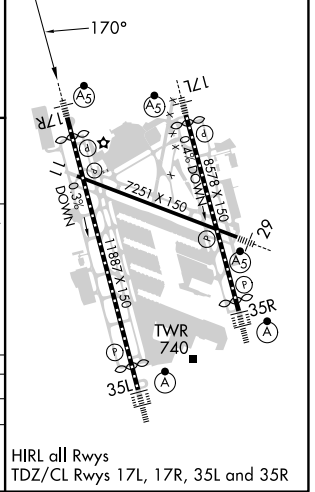
VGSI and RNAV glidepath not coincident (VGSI Angle 3.00/TCH 75).	3000	TEYUD	JIPAD	tr 292°	NADDI
CHRCL	2500				



CATEGORY	A	B	C	D
RNP 0.30 DA	974/60		489 (500-1)	

AUTHORIZATION REQUIRED

ELEV 501	D	TDZE 485
----------	----------	----------



HIRL all Rwys
TDZ/CL Rwys 17L, 17R, 35L and 35R

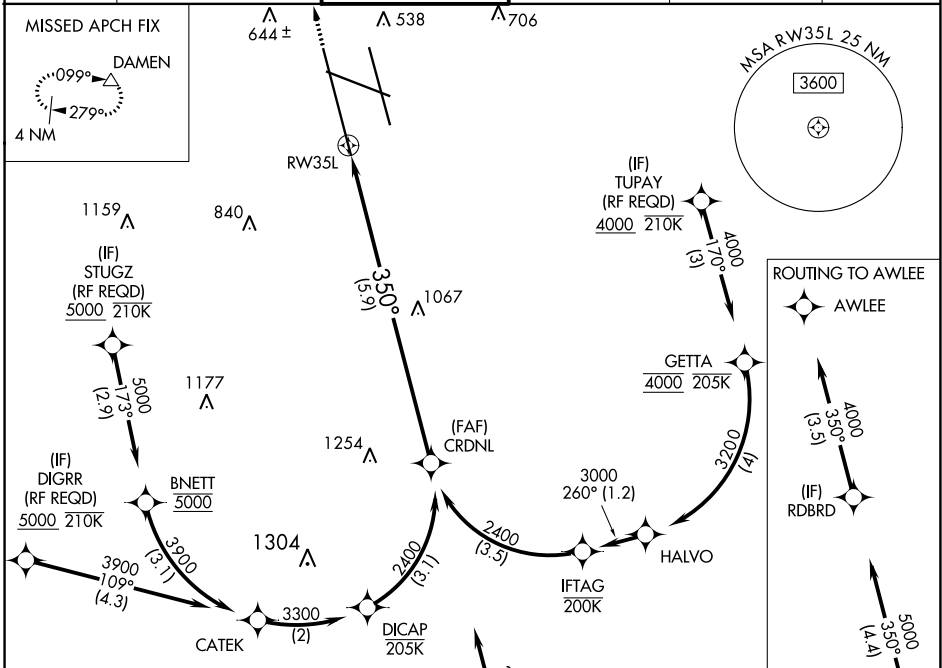
APP CRS	Rwy Idg	10000
350°	TDZE	464
	Apt Elev	501

RNAV (RNP) Z RWY 35L

LOUISVILLE MUHAMMAD ALI INTL (SDF)

RNP AR APCH.	For uncompensated Baro-VNAV systems, procedure NA below -14°C or above 54°C. Simultaneous approach authorized, except for arrivals at STUGZ, DIGRR, and TUPAY.	ALSF-2 	MISSED APPROACH: Climb to 1000 then climbing left turn to 3000 direct DAMEN and hold.
--------------	--	------------	---

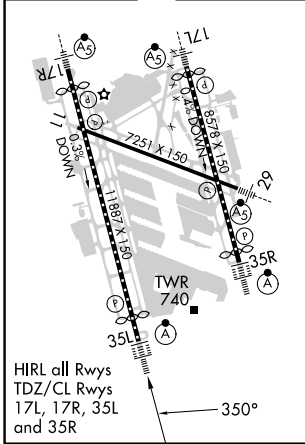
D-ATIS 118.725	LOUISVILLE APP CON 132.075 327.0	LOUISVILLE TOWER 124.2 257.8	GND CON 121.7 348.6	CLNC DEL 126.1 275.8	CPDLC
--------------------------	--	--	-------------------------------	--------------------------------	-------



SE-1, 22 FEB 2024 to 21 MAR 2024

SE-1, 22 FEB 2024 to 21 MAR 2024

ELEV 501	D	TDZE 464
----------	----------	----------



R-3704 A & B

AWLEE
SEE INSET FOR ROUTING TO AWLEE

DAMEN
1000 3000
VGSI and RNAV glidepath not coincident (VGSI Angle 3.00/TCH 75).

CRDNL
2400
GP 3.00°
TCH 59

RW35L
350°
See Planview for multiple IF locations.

CATEGORY	A	B	C	D
RNP 0.12 DA		874/45	410 (400-%)	
RNP 0.30 DA		914/50	450 (500-1)	

5.9 NM

AUTHORIZATION REQUIRED

RNAV (RNP) Z RWY 35R

LOUISVILLE MUHAMMAD ALI INTL (SDF)

APP CRS	Rwy Idg	7800
350°	TDZE	480
	Apt Elev	501

RNP AR APCH.

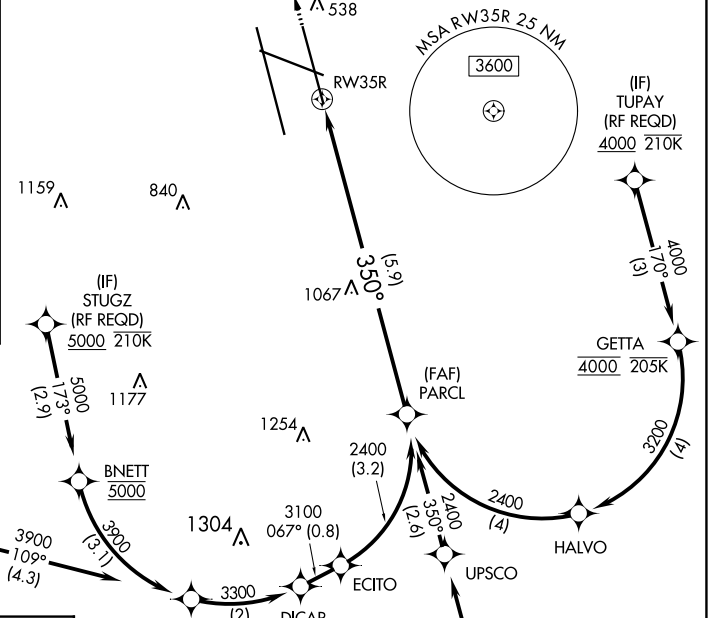
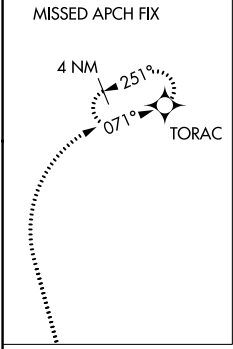
▼ For uncompensated Baro-VNAV systems, procedure NA below -14°C or above 54°C. For inop ALS, increase RNP 0.12 all Cats visibility to RVR 5000 and RNP 0.30 all Cats visibility to 1¼ SM. Simultaneous approach authorized, except for arrivals at DIGRR, TUPAY, and STUGZ.

ALSF-2

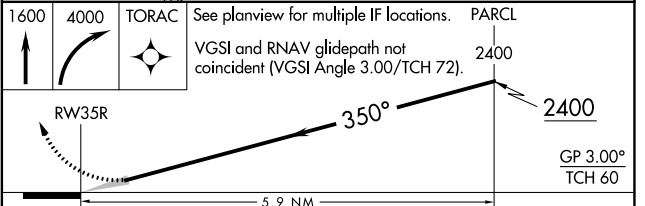
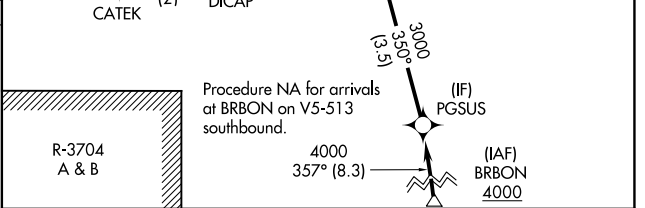
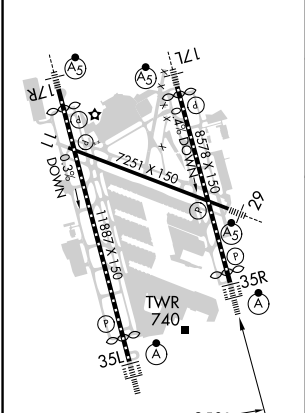
⦿

MISSED APPROACH: Climb to 1600 then climbing right turn to 4000 direct TORAC and hold.

D-ATIS	LOUISVILLE APP CON	LOUISVILLE TOWER	GND CON	CLNC DEL	CPDLC
118.725	132.075 327.0	124.2 257.8	121.7 348.6	126.1 275.8	



ELEV	501	TDZE	480
------	------------	------	------------



CATEGORY	A	B	C	D
RNP 0.12 DA		795/26	315 (300-½)	
RNP 0.30 DA		951/55	471 (500-1)	

AUTHORIZATION REQUIRED

SE-1, 22 FEB 2024 to 21 MAR 2024

SE-1, 22 FEB 2024 to 21 MAR 2024

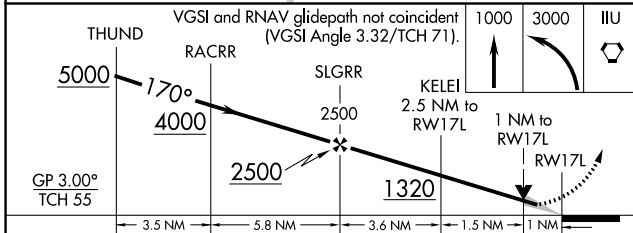
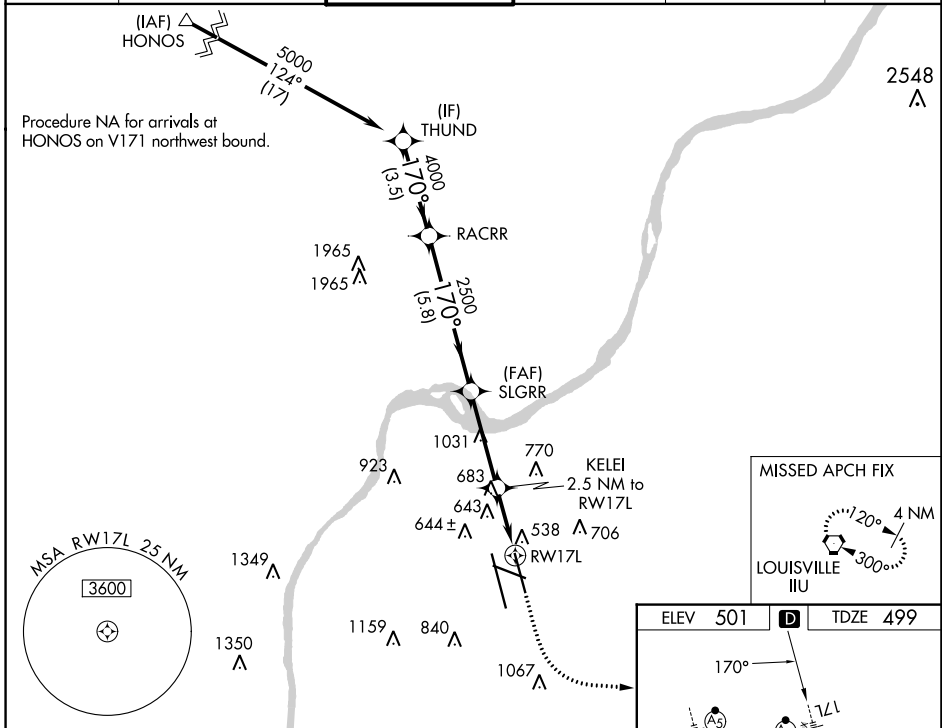
WAAS CH 90101 W17B	APP CRS 170°	Rwy Idg TDZE Apt Elev	7800 499 501
--	------------------------	-----------------------------	---

RNAV (GPS) Y RWY 17L

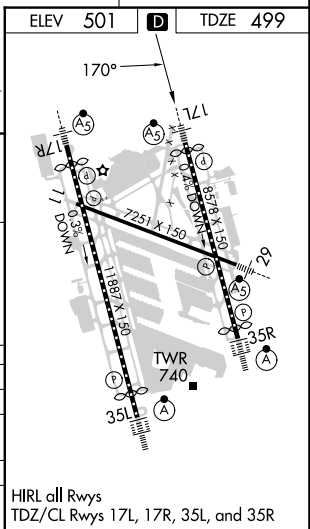
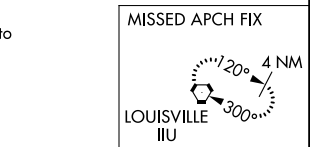
LOUISVILLE MUHAMMAD ALI INTL (SDF)

RNP APCH - GPS.		MALSRS	MISSED APPROACH: Climb to 1000 then climbing left turn to 3000 direct IIL VORTAC and hold, continue climb-in-hold to 3000.
<p>▼ Circling Rwy 11 NA at night. Simultaneous approach authorized. For uncompensated Baro-VNAV systems, LNAV/VNAV NA below -13°C or above 54°C. LNAV procedure NA during simultaneous operations. Use of FD or AP required during simultaneous operations. For inop ALS, increase LNAV/VNAV all Cats visibility to RVR 6000.</p>			

D-ATIS 118.725	LOUISVILLE APP CON 132.075 327.0	LOUISVILLE TOWER 124.2 257.8	GND CON 121.7 348.6	CLNC DEL 126.1 275.8	CPDLC
--------------------------	--	--	-------------------------------	--------------------------------	-------



CATEGORY	A	B	C	D
LPV DA		699/18	200 (200-½)	
LNAV/VNAV DA		909/40	410 (500-¾)	
LNAV MDA	920/24	421 (500-½)	920/40	421 (500-¾)
C CIRCLING	1040-1 539 (600-1)	1140-1 639 (700-1)	1160-1¾ 659 (700-1¾)	1400-3 899 (900-3)



SE-1, 22 FEB 2024 to 21 MAR 2024

SE-1, 22 FEB 2024 to 21 MAR 2024

HIRL all Rwy's
TDZ/CL Rwy's 17L, 17R, 35L, and 35R

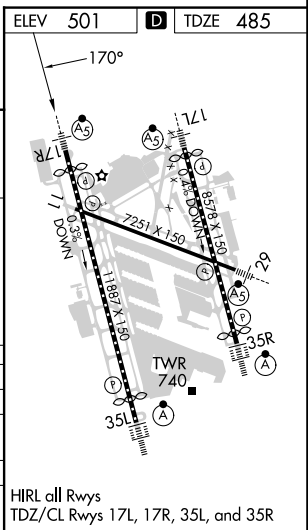
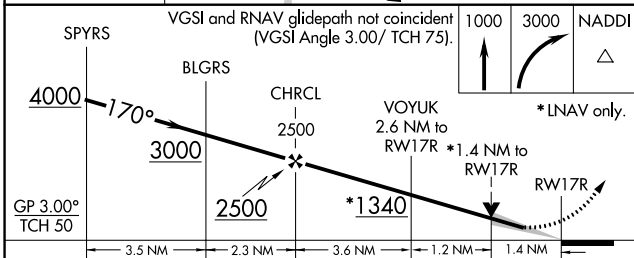
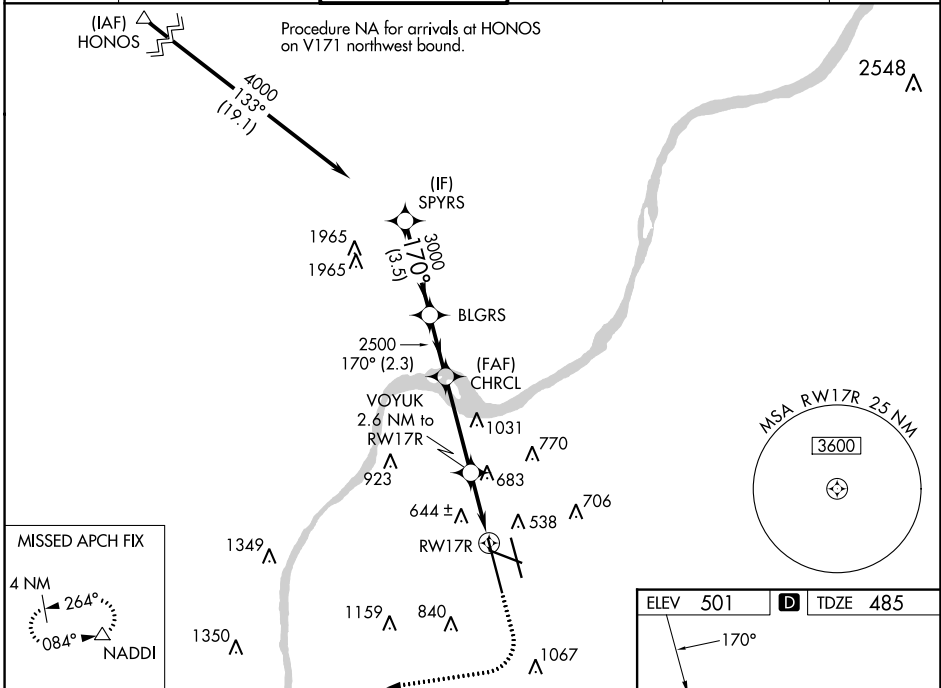
WAAS CH 57909 W17A	APP CRS 170°	Rwy ldg 10000 TDZE 485 Apt Elev 501
--	------------------------	--

RNAV (GPS) Y RWY 17R

LOUISVILLE MUHAMMAD ALI INTL (SDF)

RNP APCH.	MALSR	MISSED APPROACH: Climb to 1000 then climbing right turn to 3000 direct NADDI and hold.
Circling Rwy 11 NA at night. Simultaneous approach authorized. LNAV procedure NA during simultaneous operations. For uncompensated Baro-VNAV systems, LNAV/VNAV NA below -14°C or above 54°C. Use of FD or AP required during simultaneous operations. For inop ALS, increase LNAV Cats C/D required by 1½ SM.		

D-ATIS 118.725	LOUISVILLE APP CON 132.075 327.0	LOUISVILLE TOWER 124.2 257.8	GND CON 121.7 348.6	CLNC DEL 126.1 275.8	CPDLC
--------------------------	--	--	-------------------------------	--------------------------------	-------



CATEGORY	A	B	C	D
LPV DA		685/18	200 (200-½)	
LNAV/VNAV DA		932/55	447 (500-1)	
LNAV MDA	1000/24	515 (500-½)	1000/55	515 (500-1)
C CIRCLING	1040-1 539 (600-1)	1140-1 639 (700-1)	1160-1¾ 659 (700-1¾)	1400-3 899 (900-3)

SE-1, 22 FEB 2024 to 21 MAR 2024

SE-1, 22 FEB 2024 to 21 MAR 2024

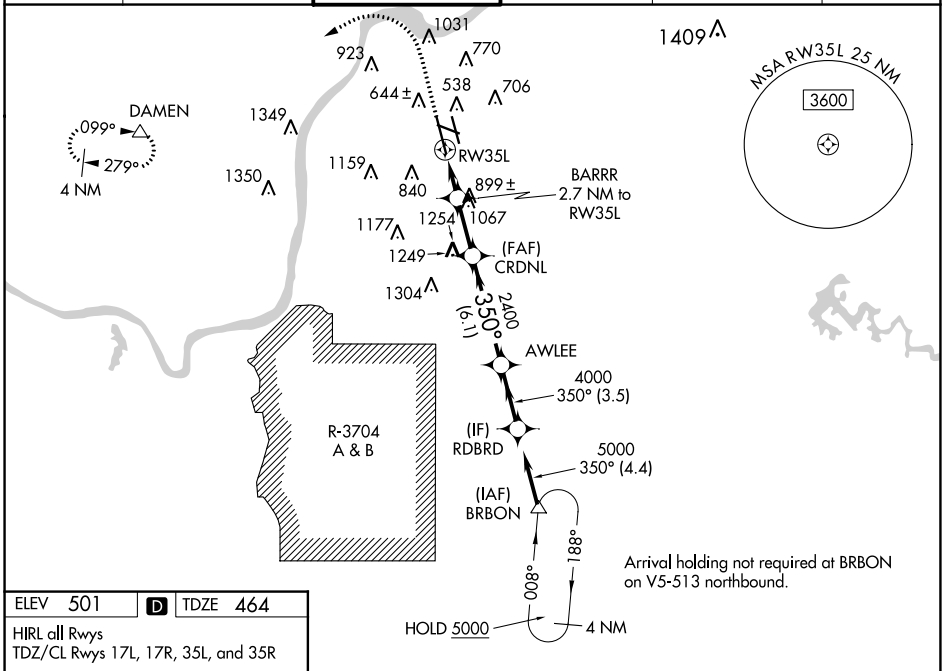
WAAS CH 86203 W35A	APP CRS 350°	Rwy Idg 10000 TDZE 464 Apt Elev 501
--	------------------------	--

RNAV (GPS) Y RWY 35L

LOUISVILLE MUHAMMAD ALI INTL (SDF)

RNP APCH. ⚠ Circling Rwy 11 NA at night. Simultaneous approach authorized. LNAV procedure NA during simultaneous operations. Use of FD or AP required during simultaneous operations. For uncompensated Baro-VNAV systems, LNAV/VNAV NA below -14°C or above 54°C. For inop ALS, increase LNAV Cats C/D visibility to 1½ SM.	ALSF-2 	MISSED APPROACH: Climb to 1000 then climbing left turn to 3000 direct DAMEN and hold.
--	------------	---

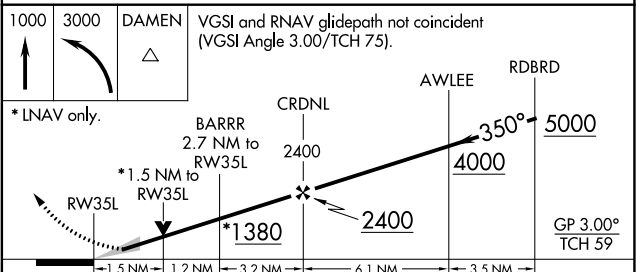
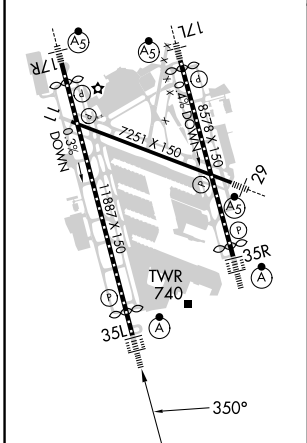
D-ATIS 118.725	LOUISVILLE APP CON 132.075 327.0	LOUISVILLE TOWER 124.2 257.8	GND CON 121.7 348.6	CLNC DEL 126.1 275.8	CPDLC
--------------------------	--	--	-------------------------------	--------------------------------	-------



SE-1, 22 FEB 2024 to 21 MAR 2024

SE-1, 22 FEB 2024 to 21 MAR 2024

ELEV 501	D	TDZE 464
HIRL all Rwys TDZ/CL Rwys 17L, 17R, 35L, and 35R		



CATEGORY	A	B	C	D
LPV DA		664/18	200 (200-½)	
LNAV/VNAV DA		904/50	440 (500-1)	
LNAV MDA	1000/24	536 (500-½)	1000/55	536 (500-1)
CIRCLING	1040-1	1140-1	1160-1¾	1400-3
	539 (600-1)	639 (700-1)	659 (700-1¾)	899 (900-3)

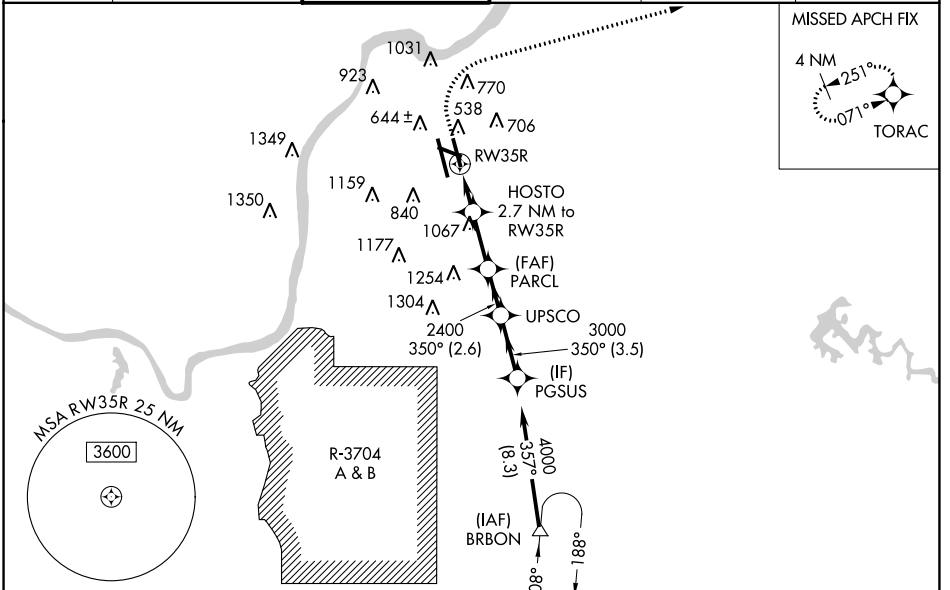
WAAS CH 70709 W35D	APP CRS 350°	Rwy Ldg TDZE Apt Elev	7800 480 501
--	------------------------	-----------------------------	---

RNAV (GPS) Y RWY 35R

LOUISVILLE MUHAMMAD ALI INTL (SDF)

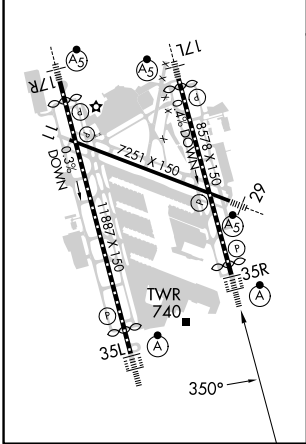
RNP APCH.		ALSIF-2	MISSED APPROACH: Climb to 1600 then climbing right turn to 4000 direct TORAC and hold.
<p>⚠ Circling Rwy 11 NA at night. Simultaneous approach authorized. LNAV procedure NA during simultaneous operations. Use of FD or AP required during simultaneous operations. For uncompensated Baro-VNAV systems, LNAV/VNAV NA below -1.4°C or above 54°C. For inop ALS, increase LNAV/VNAV all Cats visibility to 1½ SM.</p>			

D-ATIS 118.725	LOUISVILLE APP CON 132.075 327.0	LOUISVILLE TOWER 124.2 257.8	GND CON 121.7 348.6	CLNC DEL 126.1 275.8	CPDLC
--------------------------	--	--	-------------------------------	--------------------------------	-------

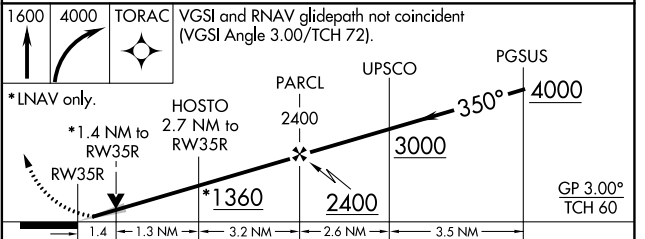


ELEV 501	D	TDZE 480
----------	----------	----------

HIRL all Rwys
TDZ/CL Rwys 17L, 17R, 35L, and 35R



Arrival holding not required at BRBON on V5-513 northbound.



CATEGORY	A	B	C	D
LPV DA		680/18	200 (200-½)	
LNAV/VNAV DA		909/50	429 (500-1)	
LNAV MDA	1000/24	520 (500-½)	1000/55	520 (500-1)
C CIRCLING	1040-1 539 (600-1)	1140-1 639 (700-1)	1160-1¾ 659 (700-1¾)	1400-3 899 (900-3)

SE-1, 22 FEB 2024 to 21 MAR 2024

SE-1, 22 FEB 2024 to 21 MAR 2024