

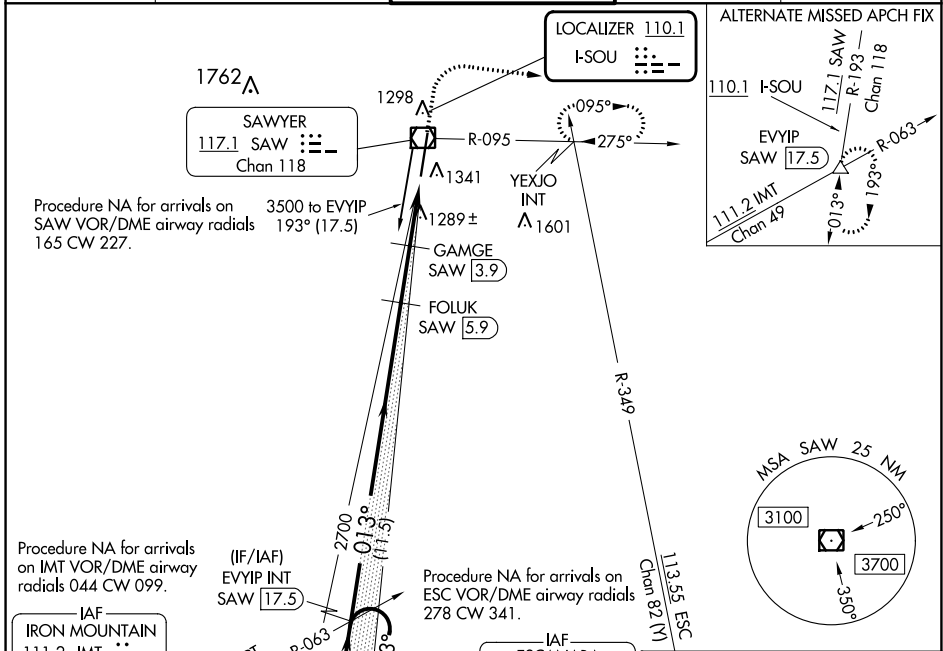
LOC I-SOU <b>110.1</b>	APP CRS <b>013°</b>	Rwy ldg TDZE Apt Elev	<b>9072</b> <b>1180</b> <b>1204</b>
---------------------------	------------------------	-----------------------------	---

# ILS or LOC RWY 1

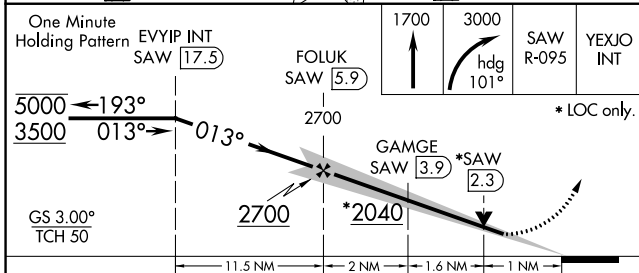
## MARQUETTE/SAWYER RGNL (SAW)

DME required for LOC only.		MALSR	MISSED APPROACH: Climb to 1700 then climbing right turn to 3000 on heading 101° and on SAW VOR/DME R-095 to YEXJO INT and hold.
Autopilot coupled approach NA below 1360 MSL.		AS	

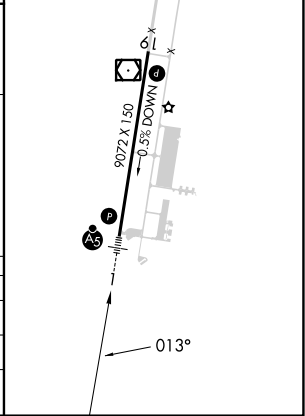
AWOS-3PT <b>118.375</b>	MINNEAPOLIS CENTER <b>119.1 290.2</b>	SAWYER TOWER ★ <b>119.975 (CTAF)</b>	GND CON <b>121.65</b>	UNICOM <b>122.7</b>
----------------------------	--	---	--------------------------	------------------------



IAF IRON MOUNTAIN 111.2 IMT Chan 49	IF/IAF EVYIP INT SAW 17.5	IAF ESCANABA 113.55 ESC Chan 82 (Y)	ELEV 1204	TDZE 1180
---	------------------------------	---	-----------	-----------



HIRL Rwy 1-19	REL Rwy 19
---------------	------------



CATEGORY	A	B	C	D
S-ILS 1		1380-½	200 (200-½)	
S-LOC 1	1580-½	400 (400-½)	1580-⅝	400 (400-⅝)
CIRCLING	1680-1	476 (500-1)	1820-1¾ 616 (700-1¾)	1820-2 616 (700-2)

EC-1, 22 FEB 2024 to 21 MAR 2024

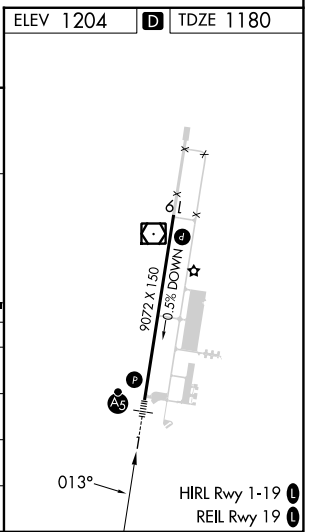
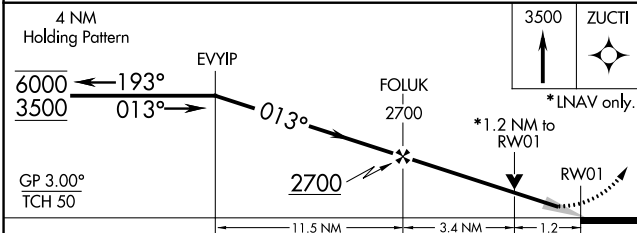
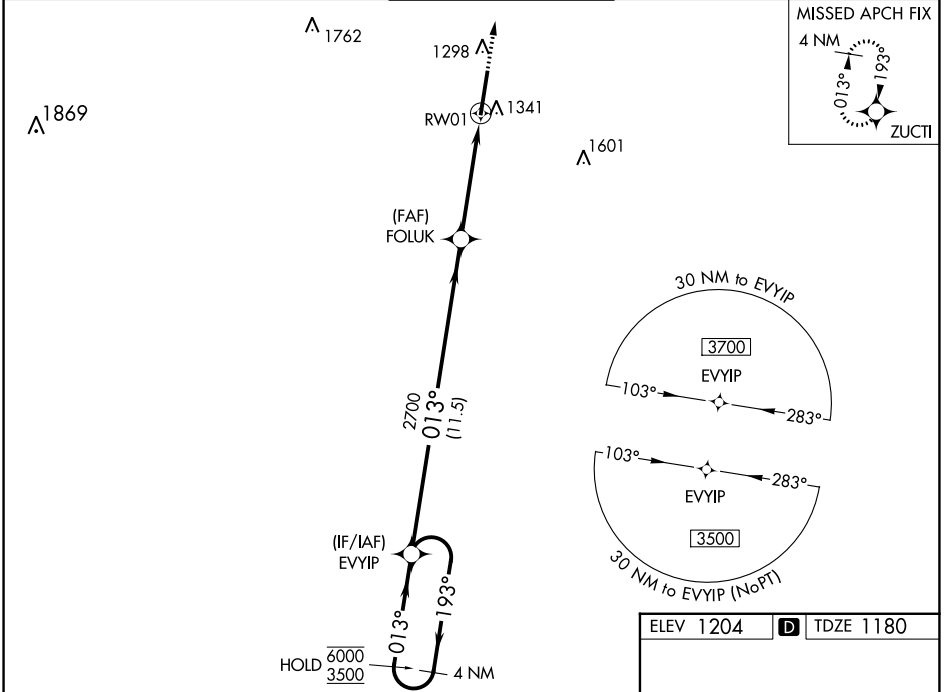
EC-1, 22 FEB 2024 to 21 MAR 2024

WAAS CH <b>97431</b> <b>W01A</b>	APP CRS <b>013°</b>	Rwy ldg <b>9072</b>
		TDZE <b>1180</b>
		Apt Elev <b>1204</b>

# RNAV (GPS) RWY 1

MARQUETTE/SAWYER RGNL (SAW)

RNP APCH. ▼ For inop ALS, increase LNAV Cat C/D visibility to 1 1/8 SM. For uncompensated Baro-VNAV systems, LNAV/VNAV NA below -17°C or above 54°C.		MALS R AS	MISSED APPROACH: Climb to 3500 direct ZUCTI and hold.
AWOS-3PT <b>118.375</b>	MINNEAPOLIS CENTER <b>119.1 290.2</b>	SAWYER TOWER ★ <b>119.975 (CTAF)</b> ①	GND CON <b>121.65</b>
			UNICOM <b>122.7</b>



CATEGORY	A	B	C	D
LPV DA		1380-1/2	200 (200-1/2)	
LNAV/VNAV DA		1503-1/2	323 (300-1/2)	
LNAV MDA	1600-1/2	420 (400-1/2)	1600-3/4	420 (400-3/4)
<b>C</b> CIRCLING	1680-1	476 (500-1)	1820-1 3/4 616 (700-1 3/4)	1820-2 616 (700-2)

EC-1, 22 FEB 2024 to 21 MAR 2024

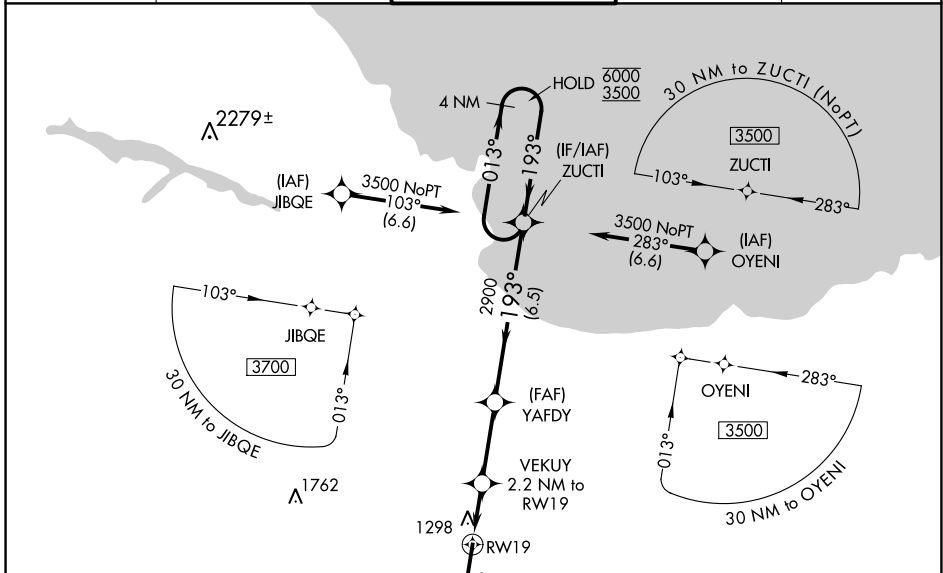
EC-1, 22 FEB 2024 to 21 MAR 2024

WAAS CH <b>86616</b> <b>W19A</b>	APP CRS <b>193°</b>	Rwy Idg TDZE Apt Elev	<b>9072</b> <b>1204</b> <b>1204</b>
--	------------------------	-----------------------------	---

# RNAV (GPS) RWY 19

MARQUETTE/SAWYER RGNL (SAW)

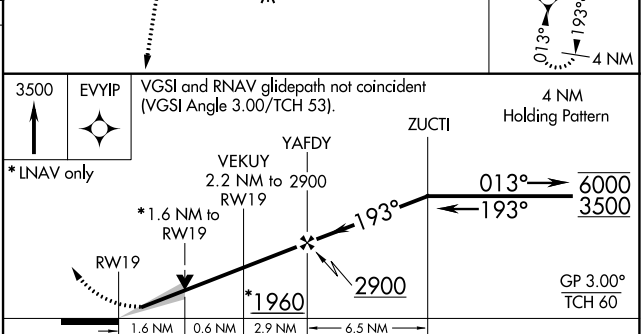
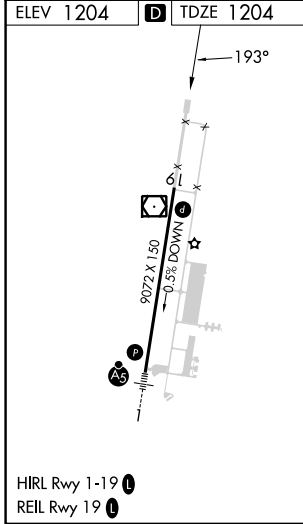
RNP APCH. ▼ For uncompensated Baro-VNAV systems, LNAV/VNAV NA below -17°C or above 54°C.		MISSED APPROACH: Climb to 3500 direct EVYIP and hold.		
AWOS-3PT <b>118.375</b>	MINNEAPOLIS CENTER <b>119.1 290.2</b>	SAWYER TOWER ★ <b>119.975</b> (CTAF) <b>1</b>	GND CON <b>121.65</b>	UNICOM <b>122.7</b>



EC-1, 22 FEB 2024 to 21 MAR 2024

EC-1, 22 FEB 2024 to 21 MAR 2024

ELEV 1204	<b>D</b> TDZE 1204
-----------	--------------------

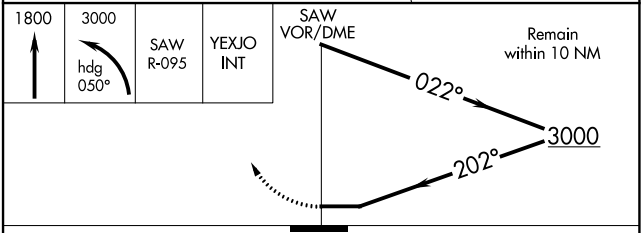
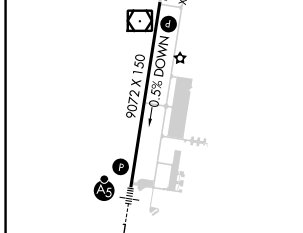
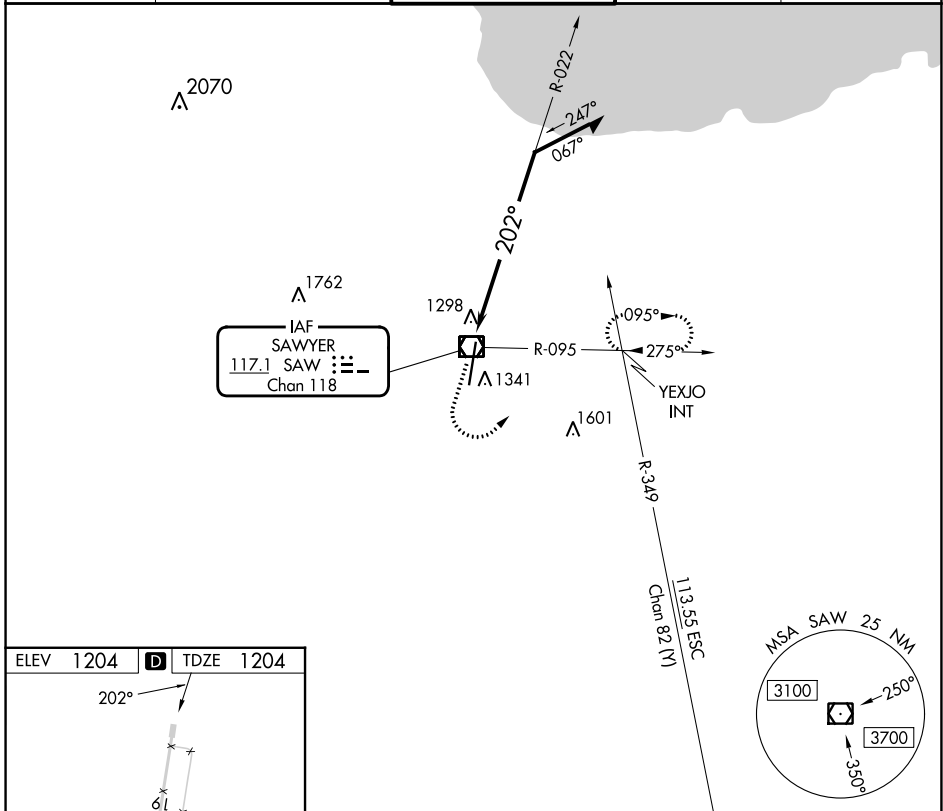


CATEGORY	A	B	C	D
LPV DA	1404- <sup>3</sup> / <sub>4</sub> 200 (200- <sup>3</sup> / <sub>4</sub> )			
LNAV/VNAV DA	1521- <sup>7</sup> / <sub>8</sub> 317 (400- <sup>7</sup> / <sub>8</sub> )			
LNAV MDA	1620-1	416 (500-1)	1620-1 <sup>1</sup> / <sub>8</sub>	416 (500-1 <sup>1</sup> / <sub>8</sub> )
<b>C</b> CIRCLING	1680-1	476 (500-1)	1820-1 <sup>3</sup> / <sub>4</sub> 616 (700-1 <sup>3</sup> / <sub>4</sub> )	1820-2 616 (700-2)

VOR/DME SAW <b>117.1</b> Chan 118	APP CRS <b>202°</b>	Rwy Idg TDZE Apt Elev	<b>9072</b> <b>1204</b> <b>1204</b>
---	------------------------	-----------------------------	---

**VOR RWY 19**  
MARQUETTE/SAWYER RGNL (SAW)

<p><b>▽</b></p>		<p>MISSED APPROACH: Climb to 1800 then climbing left turn to 3000 on heading 050° and SAW VOR/DME R-095 to YEXJO Int and hold.</p>	
AWOS-3PT <b>118.375</b>	MINNEAPOLIS CENTER <b>119.1 290.2</b>	SAWYER TOWER ★ <b>119.975 (CTAF)</b> <b>1</b>	GND CON <b>121.65</b>
		UNICOM <b>122.7</b>	



CATEGORY	A	B	C	D
S-19	1780-1	576 (600-1)	1780-1 <sup>3</sup> / <sub>8</sub>	576 (600-1 <sup>3</sup> / <sub>8</sub> )
<b>C</b> CIRCLING	1780-1	576 (600-1)	1820-1 <sup>3</sup> / <sub>4</sub> 616 (700-1 <sup>3</sup> / <sub>4</sub> )	1820-2 616 (700-2)

EC-1, 22 FEB 2024 to 21 MAR 2024

EC-1, 22 FEB 2024 to 21 MAR 2024