


LOC I-SAC 110.3	APP CRS 019°	Rwy Idg 5503 TDZE 21 Apt Elev 24
---------------------------	------------------------	---

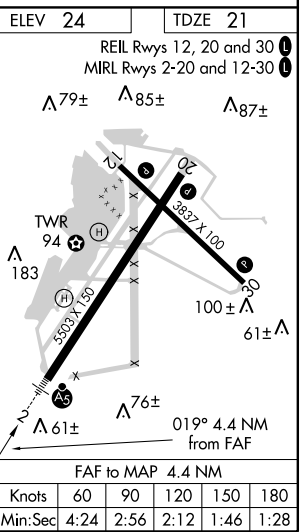
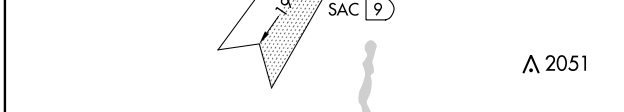
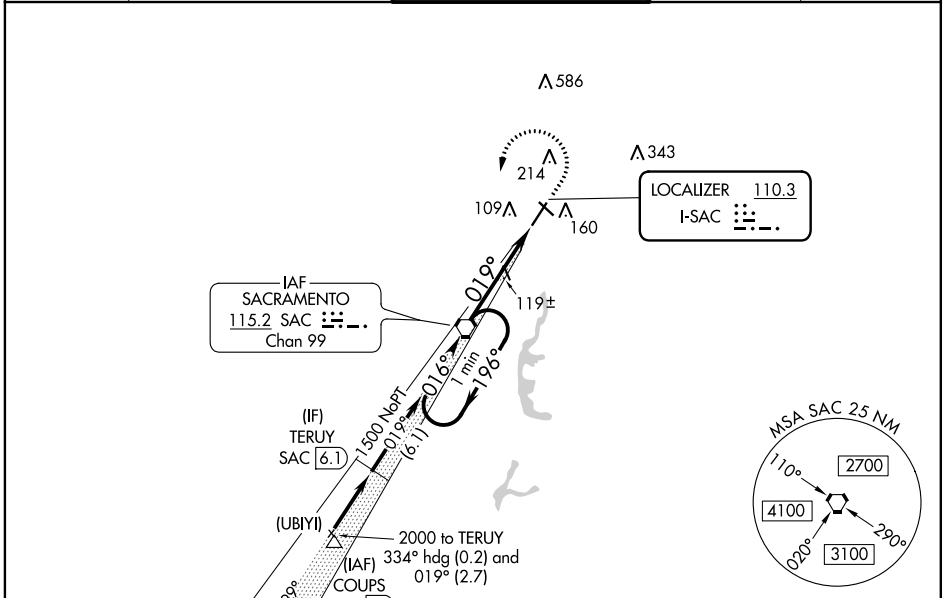
ILS or LOC RWY 2

SACRAMENTO EXECUTIVE (SAC)

⚠ When local altimeter setting not received, use Sacramento Intl altimeter setting and increase DA to 322, increase all MDA 40 feet. Autopilot coupled approach NA below 335 feet. For inop MALSRL, increase S-ILS 2 all Cats visibility to 7/8 SM and S-LOC 2 Cat C/D visibility to 1 SM. For inop MALSRL when using Sacramento Intl altimeter setting, increase S-ILS 2 all Cats visibility to 7/8 SM.

MALSRL

MISSED APPROACH:
 Climb to 600 then climbing left turn to 1600 direct SAC VORTAC and hold.

ATIS 125.5	NORCAL APP CON 125.25 257.9	EXEC TOWER ★ 119.5 (CTAF) 278.8	GND CON 125.0	UNICOM 122.95
----------------------	---------------------------------------	---	-------------------------	-------------------------



CATEGORY	A	B	C	D
S-ILS 2	294-1/2 273 (300-1/2)			
S-LOC 2	380-1/2	359 (400-1/2)	380-5/8	359 (400-5/8)
CIRCLING	500-1 476 (500-1)	520-1 496 (500-1)	520-1 1/2 496 (500-1 1/2)	580-2 556 (600-2)

SW-2, 28 JAN 2021 to 25 FEB 2021


SW-2, 28 JAN 2021 to 25 FEB 2021

WAAS CH 62810 W02A	APP CRS 019°	Rwy Idg TDZE 21 Apt Elev 24	5503
--	------------------------	---	-------------

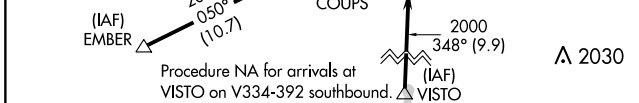
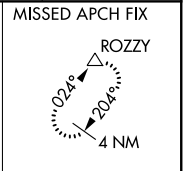
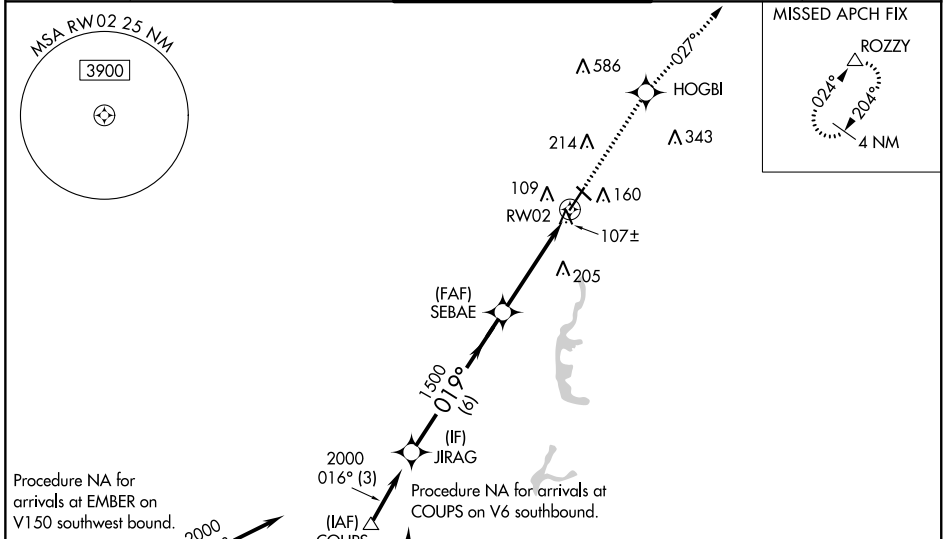
RNAV (GPS) RWY 2

SACRAMENTO EXECUTIVE (SAC)

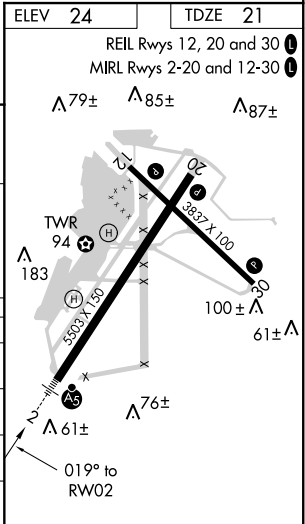
⚠ Baro-VNAV NA when using Sacramento Intl altimeter setting. For uncompensated Baro-VNAV systems, LNAV/VNAV NA below -15°C (5°F) or above 54°C (130°F). DME/DME RNP-0.3 NA. When local altimeter setting not received, use Sacramento Intl altimeter setting and increase LPV DA to 322; increase LNAV/VNAV DA to 401 and all visibilities 1/8 mile; increase all MDA 40 feet and LNAV Cats C/D visibility 1/8 mile. For inop MALSR, increase LPV all Cats visibility to 1/2. For inop MALSR when using Sacramento Intl altimeter setting, increase LPV all Cats visibility to 1.

MALSR
 MISSED APPROACH: Climb to 3000 direct HOGBI and on track 027° to ROZZY and hold.

ATIS 125.5	NORCAL APP CON 125.25 257.9	EXEC TOWER * 119.5 (CTAF) 0 278.8	GND CON 125.0	UNICOM 122.95
----------------------	---------------------------------------	---	-------------------------	-------------------------



CATEGORY	A	B	C	D
	LPV DA	294-1/2	273 (300-1/2)	
LNAV/VNAV DA		373-5/8	352 (400-5/8)	
LNAV MDA	440-1/2	419 (500-1/2)	440-3/4	419 (500-3/4)
CIRCLING	500-1 476 (500-1)	520-1 496 (500-1)	520-1 1/2 496 (500-1 1/2)	580-2 556 (600-2)



SW-2, 28 JAN 2021 to 25 FEB 2021

SW-2, 28 JAN 2021 to 25 FEB 2021

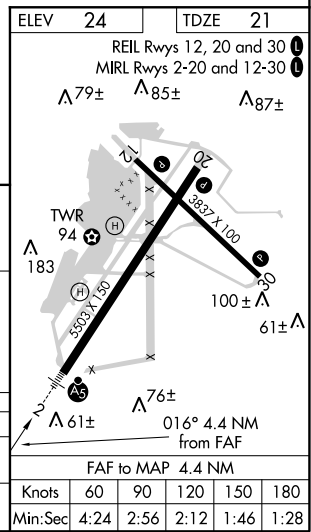
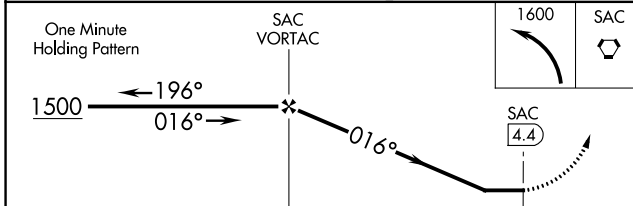
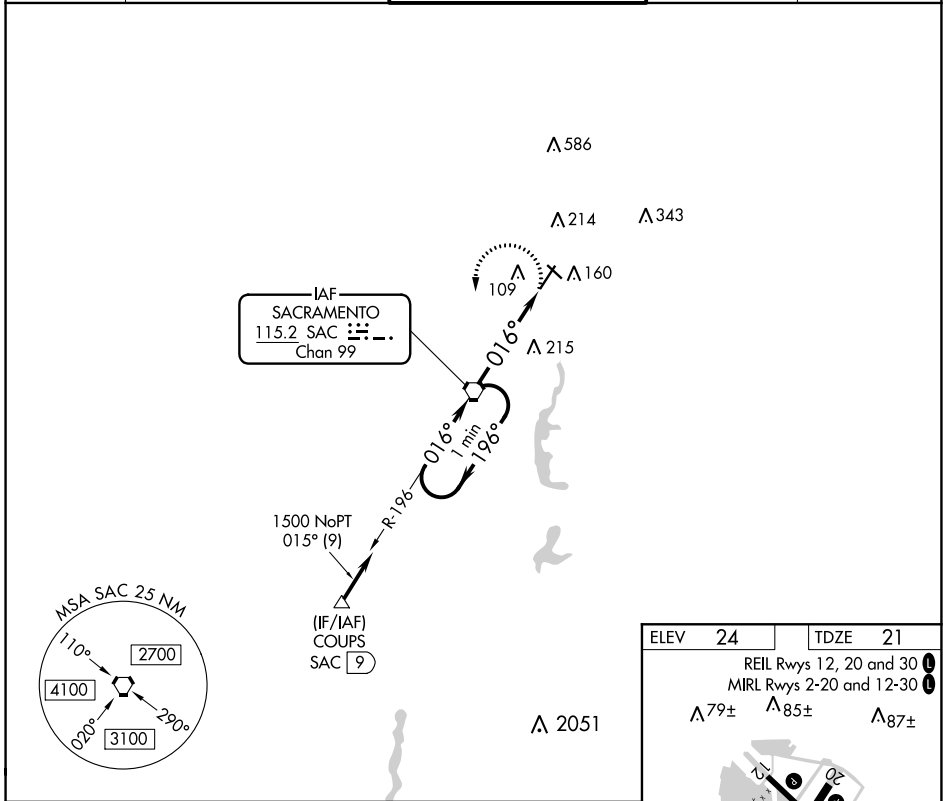
VORTAC SAC 115.2 Chan 99	APP CRS 016°	Rwy Idg 5503 TDZE 21 Apt Elev 24
--	------------------------	---

VOR RWY 2

SACRAMENTO EXECUTIVE (SAC)

<p>When local altimeter setting not received, use Sacramento Inl altimeter setting and increase all MDA 40 feet.</p>	<p>MALS R</p>	<p>MISSED APPROACH: Climbing left turn to 1600 direct SAC VORTAC and hold.</p>

ATIS 125.5	NORCAL APP CON 125.25 257.9	EXEC TOWER * 119.5 (CTAF) 0 278.8	GND CON 125.0	UNICOM 122.95
----------------------	---------------------------------------	---	-------------------------	-------------------------



CATEGORY	A	B	C	D
S-2	520-1/2	499 (500-1/2)	520-1	499 (500-1)
CIRCLING	520-1	496 (500-1)	520-1/2	580-2
			496 (500-1/2)	556 (600-2)

SW-2, 28 JAN 2021 to 25 FEB 2021

SW-2, 28 JAN 2021 to 25 FEB 2021

FAF to MAP 4.4 NM					
Knots	60	90	120	150	180
Min:Sec	4:24	2:56	2:12	1:46	1:28