

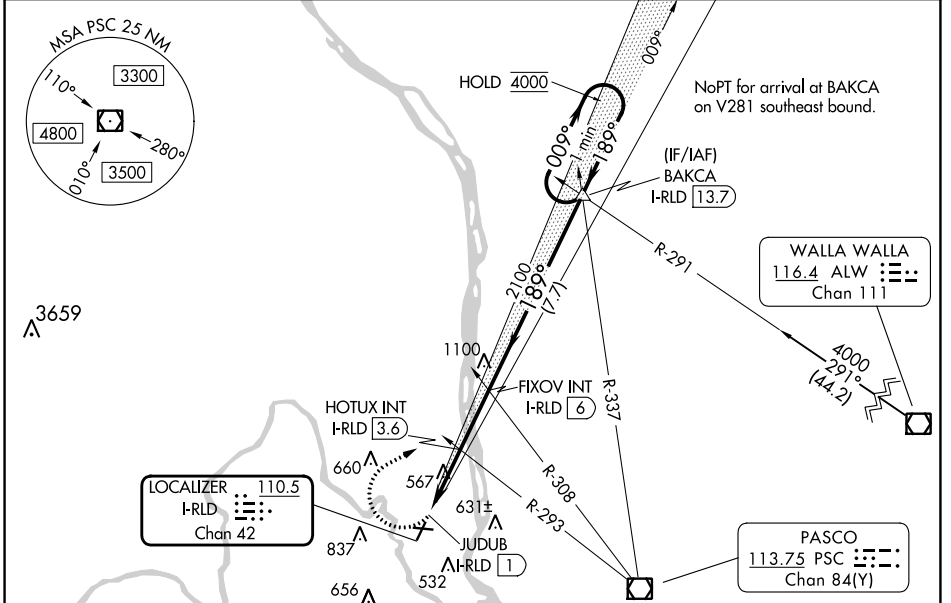
LOC/DME I-RLD 110.5 Chan 42	APP CRS 189°	Rwy ldg TDZE Apt Elev	4009 390 394
---	------------------------	-----------------------------	---

LOC RWY 19

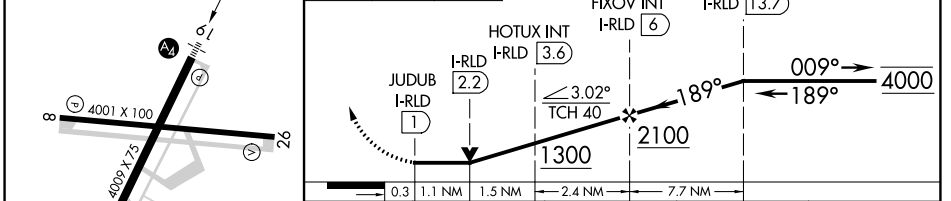
RICHLAND (R.LD)

<p>▼ Rwy 19 helicopter visibility reduction below ¼ SM NA. Inop table does not apply to S-19 Cat C. For inop ALS increase HOTUX fix minimums S-19 Cat D visibility ¼ SM.</p>	<p>MALS</p>	<p>MISSED APPROACH: Climbing right turn to 4000 on heading 045° and on PSC VOR/DME R-337 to BAKCA INT/I-RLD 13.7 DME and hold, continue climb-in-hold to 4000.</p>
---	--------------------	---

AWOS-3PT 132.675	SPOKANE APP CON * 128.75 377.2	CLNC DEL 122.4	UNICOM 122.7 (CTAF) 0
----------------------------	--	--------------------------	---------------------------------



ELEV 394	TDZE 390	4000	PSC R-337	BAKCA	VGSI and descent angles not coincident (VGSI Angle 3.00/TCH 30).	One Minute Holding Pattern
----------	----------	------	-----------	-------	--	----------------------------



CATEGORY	A	B	C	D
S-19	1300-1	910 (1000-1)	1300-2½	910 (1000-2½)
C CIRCLING	1300-1¼	906 (1000-1¼)	1300-2¾ 906 (1000-2¾)	1940-3 1546 (1600-3)
HOTUX FIX MINIMUMS (DUAL VOR RECEIVERS OR DME REQUIRED)				
S-19	880-¾	490 (500-¾)	880-1⅛	490 (500-1⅛)
C CIRCLING	920-1 526 (600-1)	1000-1 606 (700-1)	1200-2¼ 806 (900-2¼)	1940-3 1546 (1600-3)

RICHLAND, WASHINGTON
Amdt 9A 08SEP22

46°18'N-119°18'W

RICHLAND (R.LD) LOC RWY 19

NW-1, 22 FEB 2024 to 21 MAR 2024

NW-1, 22 FEB 2024 to 21 MAR 2024

WAAS CH 77903 W26A	APP CRS 259°	Rwy Idg TDZE Apt Elev	4001 389 394
--	------------------------	-----------------------------	---

RNAV (GPS) RWY 26

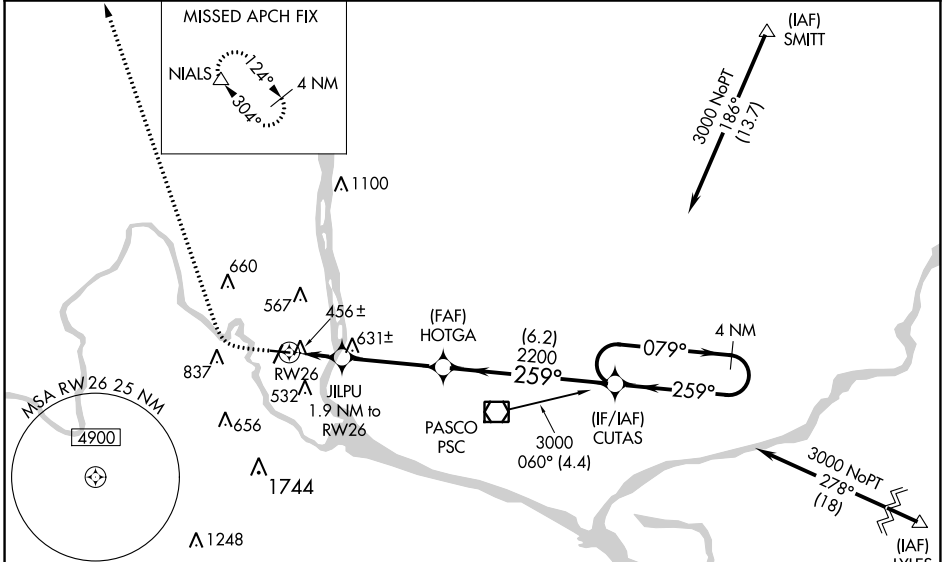
RICHLAND (R.LD)

RNP APCH.

NA When local altimeter setting not received, use Pasco altimeter setting and increase all DA 21 feet and all MDA 40 feet and increase RNAV/VNAV Cats A and B visibility 1/2 mile, Circling Cat C visibility 1/4 mile. Baro-VNAV NA when using Pasco altimeter setting. For uncompensated Baro-VNAV systems, LNAV/VNAV NA below -15°C (4°F) or above 41°C (107°F). Rwy 26 helicopter visibility reduction below 3/4 SM NA.

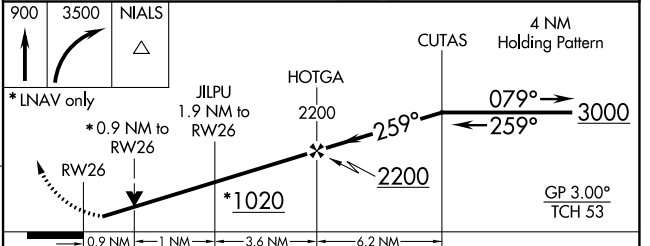
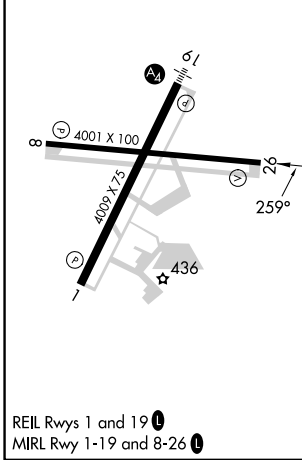
MISSED APPROACH: Climb to 900 then climbing right turn to 3500 direct NIALS and hold.

AWOS-3PT 132.675	SPOKANE APP CON * 128.75 377.2	CLNC DEL 122.4	UNICOM 122.7 (CTAF)
----------------------------	--	--------------------------	-------------------------------



ELEV 394	TDZE 389
-----------------	-----------------

Procedure NA for arrivals at PSC VOR/DME on V187 southwest bound and on V281 southeast bound.



CATEGORY	A	B	C	D
LPV DA	657-7/8	268 (300-7/8)	657-1	268 (300-1)
LNAV/VNAV DA	639-3/4	250 (300-3/4)	639-1	250 (300-1)
LNAV MDA	720-1 331 (400-1)			
C CIRCLING	920-1 526 (600-1)	1000-1 606 (700-1)	1200-2 1/4 806 (900-2 1/4)	1940-3 1546 (1600-3)

NW-1, 22 FEB 2024 to 21 MAR 2024

NW-1, 22 FEB 2024 to 21 MAR 2024

APP CRS	Rwy Idg	4009
189°	TDZE	390
	Apt Elev	394

RNAV (GPS) Y RWY 19

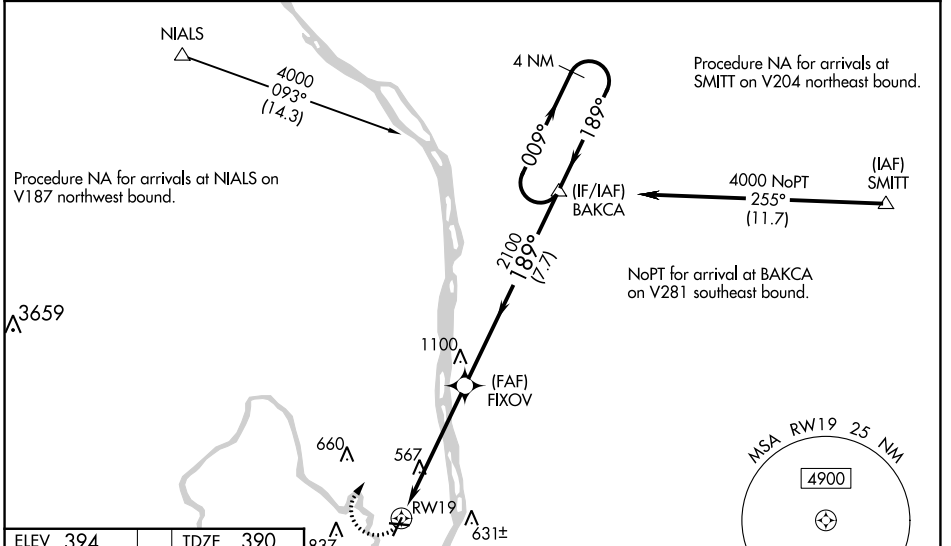
RICHLAND (R.LD)

NA For uncompensated Baro-VNAV systems, LNAV/VNAV NA below -15°C (4°F) or above 41°C (106°F). DME/DME RNP-0.3 NA. When local altimeter setting not received, use Pasco altimeter setting and increase all DA 21 feet and all MDA 40 feet and increase LNAV Cat A visibility ¼ mile, Cat C and D ½ mile, and Circling Cat C visibility ¼ mile. For inop MALS increase LNAV/VNAV Cat D visibility to 1½ mile, LNAV Cat C and D visibility to 2½ mile. When using Pasco altimeter setting increase LNAV/VNAV all Cats visibility to 1¾ mile, LNAV Cat C and D visibility to 2½ mile. VDP and Baro-VNAV NA when using Pasco altimeter setting. Helicopter visibility reduction below ¾ SM NA.

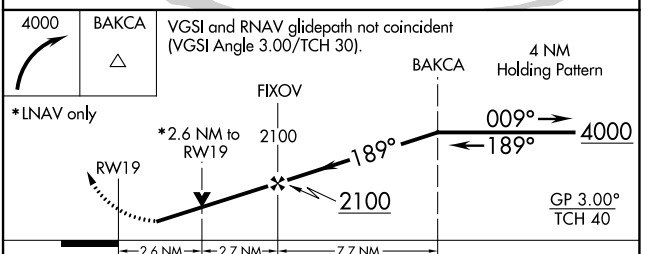
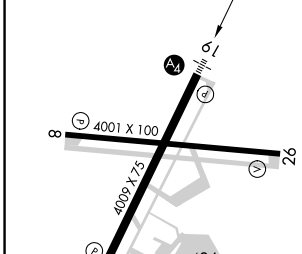
MALS

MISSED APPROACH: Climbing right turn 4000 direct BAKCA and hold, continue climb-in-hold to 4000.

AWOS-3PT 132.675	SPOKANE APP CON * 128.75 377.2	CLNC DEL 122.4	UNICOM 122.7 (CTAF) 0
----------------------------	--	--------------------------	---------------------------------



ELEV 394	TDZE 390
----------	----------



CATEGORY	A	B	C	D
LNAV/VNAV DA	861-1 ³ / ₈		471 (500-1 ³ / ₈)	
LNAV MDA	1240- ³ / ₄ 850 (900- ³ / ₄)	1240-1 850 (900-1)	1240-2	850 (900-2)
C CIRCLING	1240-1 ¹ / ₄	846 (900-1 ¹ / ₄)	1240-2 ¹ / ₂ 846 (900-2 ¹ / ₂)	1940-3 1546 (1600-3)

NW-1, 22 FEB 2024 to 21 MAR 2024

NW-1, 22 FEB 2024 to 21 MAR 2024

APP CRS	Rwy Idg	4009
189°	TDZE	390
	Apt Elev	394

RNAV (GPS) Z RWY 19

RICHLAND (R.LD)

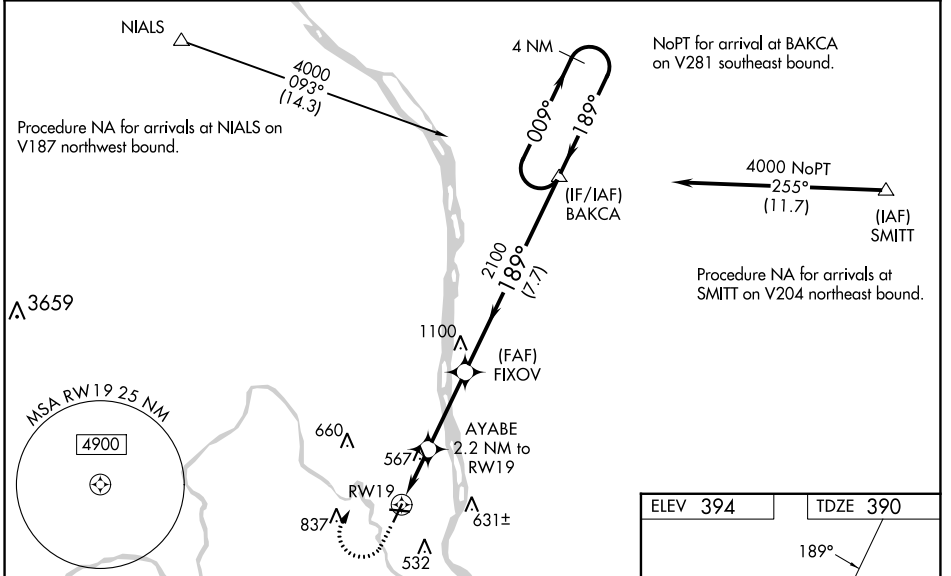
NA For uncompensated Baro-VNAV systems, LNAV/VNAV NA below -15°C (4°F) or above 41°C (106°F). DME/DME RNP-0.3 NA. When local altimeter setting not received, use Pasco altimeter setting and increase all DA 21 feet and all MDA 40 feet. Increase LNAV Cats C and D visibility 1/8 mile and Circling Cat C 1/4 mile. For inop MALS increase LNAV/VNAV all Cats visibility to 7/8 mile and increase LNAV Cat D visibility to 1 3/8 mile. Helicopter visibility reduction below 3/4 SM NA. VDP and Baro/VNAV NA when using Pasco altimeter setting. For inoperative MALS when using Pasco altimeter setting increase LNAV/VNAV all Cats visibility to 7/8 and LNAV Cats C and D visibility to 1 1/2.

Missed approach requires minimum climb of 340 feet per NM to 2000; if unable to meet climb gradient see RNAV (GPS) Y Rwy 19.

MALS

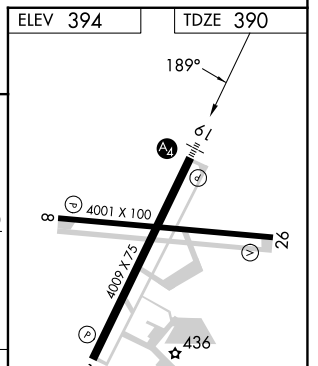
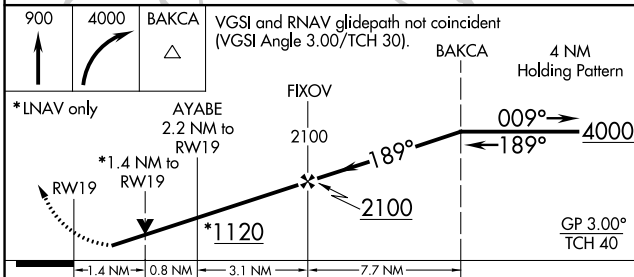
MISSED APPROACH: Climb to 900 then climbing right turn to 4000 direct BAKCA and hold, continue climb-in-hold to 4000.

AWOS-3PT 132.675	SPOKANE APP CON * 128.75 377.2	CLNC DEL 122.4	UNICOM 122.7 (CTAF) 0
-----------------------------------	---	---------------------------------	--

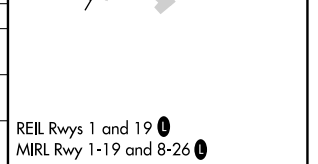


NW-1, 22 FEB 2024 to 21 MAR 2024

NW-1, 22 FEB 2024 to 21 MAR 2024



900	4000	BAKCA	VGSI and RNAV glidepath not coincident (VGSI Angle 3.00/TCH 30).			
*LNAV only		AYABE 2.2 NM to RWY 19	FIXOV 2100	4 NM Holding Pattern		
RWY 19		*1.4 NM to RWY 19	*1120	GP 3.00° TCH 40		
-1.4 NM		0.8 NM	3.1 NM	7.7 NM		
CATEGORY	A	B	C	D		
LNAV/VNAV DA	#640-3/4 250 (300-3/4)					
LNAV MDA	#880-3/4	490 (500-3/4)	#880-1 1/8	490 (500-1 1/8)		
CIRCLING	920-1 526 (600-1)	1000-1 606 (700-1)	1200-2 1/4 806 (900-2 1/4)	1940-3 1546 (1600-3)		



REIL Rwy 1 and 19 0
MIRL Rwy 1-19 and 8-26 0

VOR/DME PSC 113.75 Chan 84(Y)	APP CRS 090°	Rwy Idg TDZE Apt Elev N/A N/A 394
---	------------------------	---

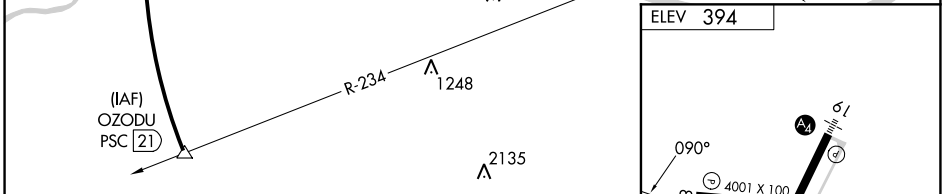
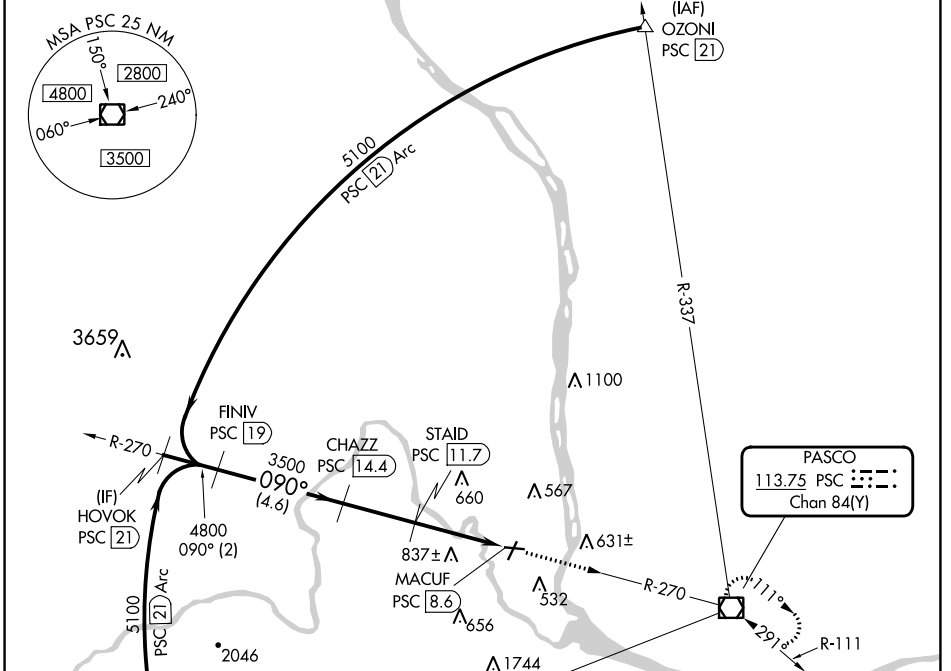
VOR/DME-A

RICHLAND (R.LD)

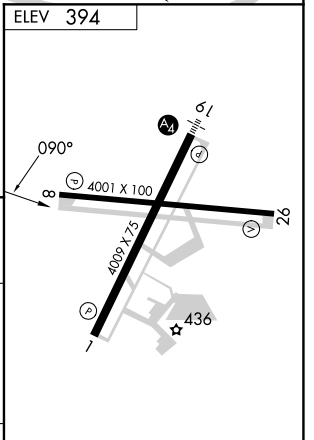
NA When local altimeter setting not received, use Pasco altimeter setting and increase all MDA 40 feet.

MISSED APPROACH: Climb to 3000 direct PSC VOR/DME and hold.

AWOS-3PT 132.675	SPOKANE APP CON * 128.75 377.2	CLNC DEL 122.4	UNICOM 122.7 (CTAF)
----------------------------	--	--------------------------	-------------------------------



HOVOK PSC 21	FINIV PSC 19	CHAZZ PSC 14.4	STAID PSC 11.7	MACUF PSC 8.6
5100	4800	3500	1540	
2 NM		4.6 NM		2.7 NM
A		B		C



CATEGORY	A	B	C	D	REIL Rwys 1 and 19 MIRL Rwy 1-19 and 8-26
CIRCLING	1140-1	746 (800-1)	1200-2¼ 806 (900-2¼)	1940-3 1546 (1600-3)	

NW-1, 22 FEB 2024 to 21 MAR 2024

NW-1, 22 FEB 2024 to 21 MAR 2024