

COLIN EIGHT DEPARTURE

ATIS 119.15 263.025
CLNC DEL
127.55 348.6
GND CON
121.9 348.6
RICHMOND TOWER
121.1 257.8
POTOMAC DEP CON
126.4 282.375

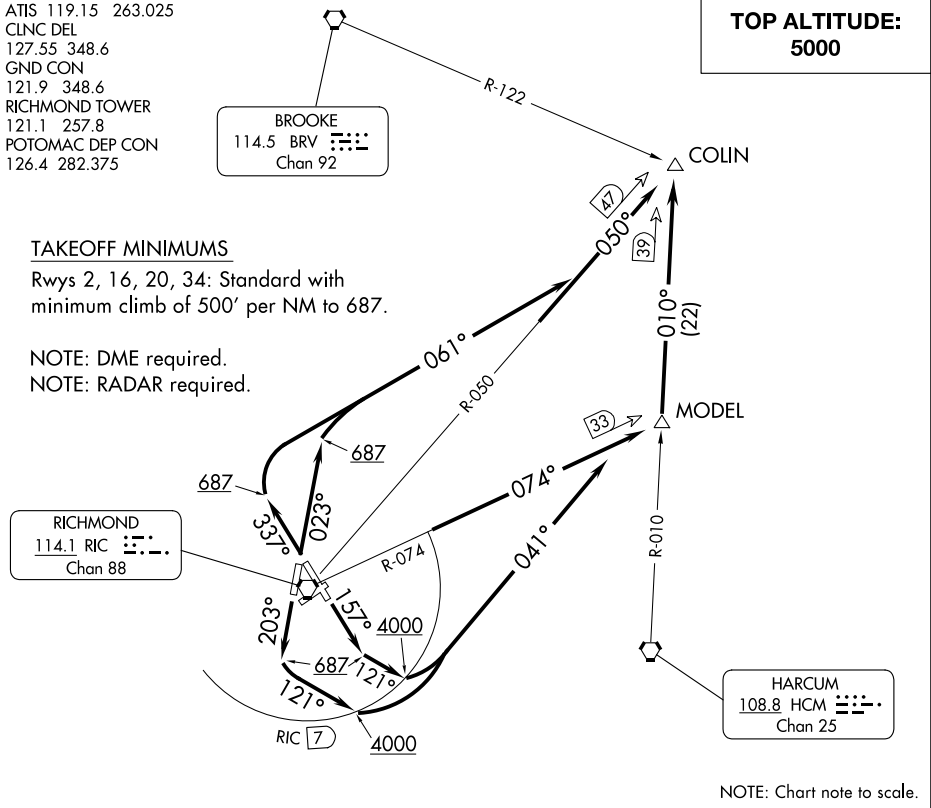
BROOKE
114.5 BRV
Chan 92

**TOP ALTITUDE:
5000**

TAKEOFF MINIMUMS

Rwys 2, 16, 20, 34: Standard with minimum climb of 500' per NM to 687.

NOTE: DME required.
NOTE: RADAR required.



NE-3, 22 FEB 2024 to 21 MAR 2024

NE-3, 22 FEB 2024 to 21 MAR 2024



DEPARTURE ROUTE DESCRIPTION

TAKEOFF RUNWAY 2: Climb heading 023° to 687, then climbing right turn heading 061° to intercept RIC VORTAC R-050 to COLIN INT/RIC 47 DME, thence

TAKEOFF RUNWAY 16: Climb heading 157° to 687, then climbing left turn heading 121° to cross RIC VORTAC 7 DME at or above 4000, then climbing left turn heading 041° to intercept RIC VORTAC R-074 to MODEL INT/RIC 33 DME, then on HCM VORTAC R-010 to COLIN INT/HCM 39 DME, thence

TAKEOFF RUNWAY 20: Climb heading 203° to 687, then climbing left turn heading 121° to cross RIC VORTAC 7 DME at or above 4000, then climbing left turn heading 041° to intercept RIC VORTAC R-074 to MODEL INT/RIC 33 DME, then on HCM VORTAC R-010 to COLIN INT/HCM 39 DME, thence

TAKEOFF RUNWAY 34: Climb heading 337° to 687, then climbing right turn heading 061° to intercept RIC VORTAC R-050 to COLIN INT/RIC 47 DME, thence

. . . . maintain 5000 or assigned altitude. Expect filed altitude within ten minutes after departure.

**TOP ALTITUDE:
5000**

TAKEOFF MINIMUMS

Rwys 2, 16, 20, 34: Standard with minimum climb of 500' per NM to 687.

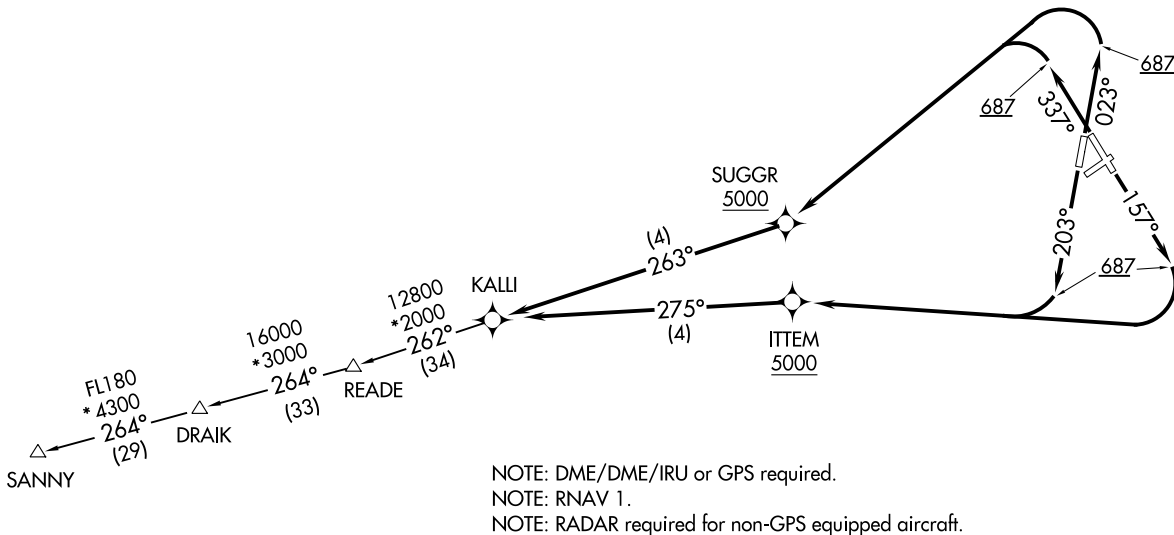
ATIS
119.15 263.025
CLNC DEL
127.55 348.6
GND CON
121.9 348.6
RICHMOND TOWER
121.1 257.8
POTOMAC DEP CON
126.75 307.2

KALLI SEVEN DEPARTURE (RNAV)
(KALLI7.KALLI) 02DEC21

(KALLI7.KALLI) 21336
KALLI SEVEN DEPARTURE (RNAV)

AL-347 (FAA)

RICHMOND INTL (RIG)
RICHMOND, VIRGINIA



MAULS
FUBLL

NOTE: Chart not to scale.

(NARRATIVE ON FOLLOWING PAGE)

RICHMOND, VIRGINIA
RICHMOND INTL (RIG)

KALLI SEVEN DEPARTURE (RNAV)



DEPARTURE ROUTE DESCRIPTION

TAKEOFF RUNWAY 2: Climb on heading 023° to 687, then climbing left turn direct to cross SUGGR at or above 5000, then on track 263° to KALLI, thence....

TAKEOFF RUNWAY 16: Climb on heading 157° to 687, then climbing right turn direct to cross ITTEM at or above 5000, then on track 275° to KALLI, thence....

TAKEOFF RUNWAY 20: Climb on heading 203° to 687, then climbing right turn direct to cross ITTEM at or above 5000, then on track 275° to KALLI, thence....

TAKEOFF RUNWAY 34: Climb on heading 337° to 687, then climbing left turn direct to cross SUGGR at or above 5000, then on track 263° to KALLI, thence....

....(transition). Maintain 5000, expect filed altitude ten minutes after departure.

DRAIK TRANSITION (KALLI7.DRAIK)

READE TRANSITION (KALLI7.READE)

SANNY TRANSITION (KALLI7.SANNY)

NE-3, 22 FEB 2024 to 21 MAR 2024

NE-3, 22 FEB 2024 to 21 MAR 2024

(LUCYL6.LUCYL) 23278

AL-347 (FAA)

RICHMOND INTL (RIC)
RICHMOND, VIRGINIA

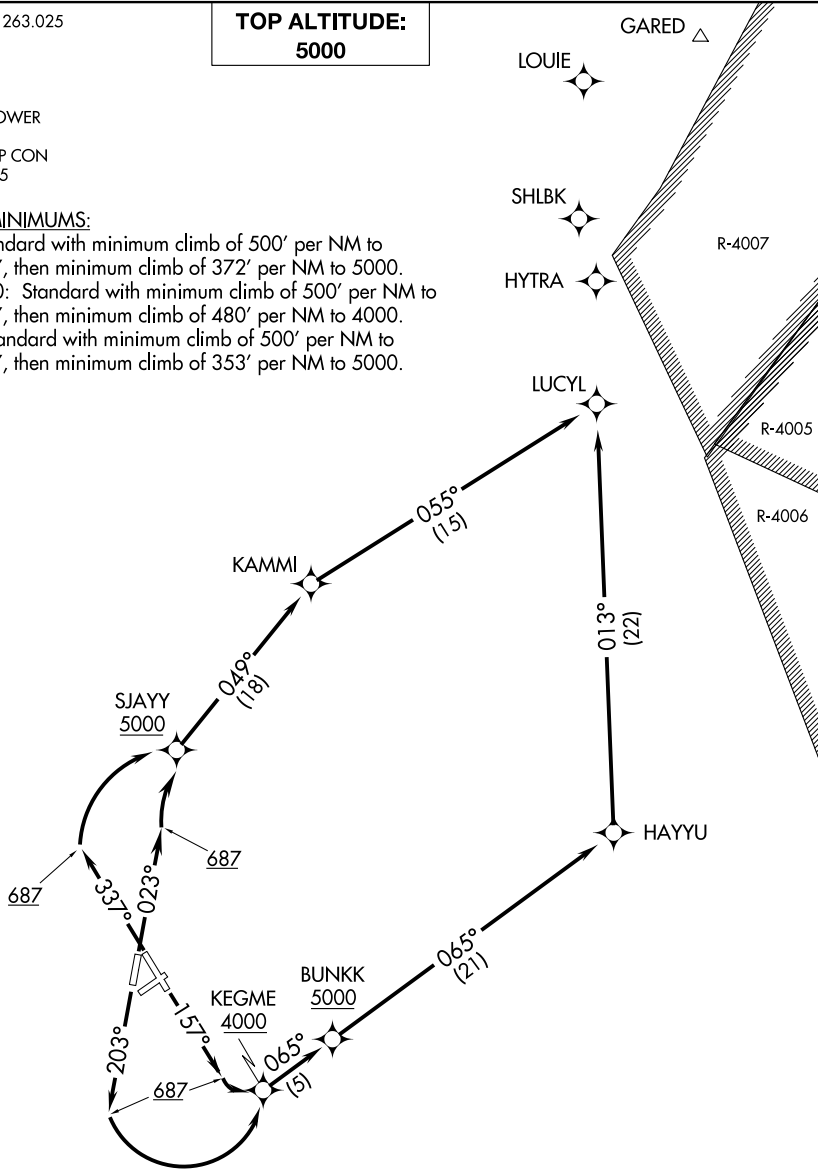
LUCYL SIX DEPARTURE (RNAV)

ATIS 119.15 263.025
CLNC DEL
127.55 348.6
GND CON
121.9 348.6
RICHMOND TOWER
121.1 257.8
POTOMAC DEP CON
126.4 282.375

**TOP ALTITUDE:
5000**

TAKEOFF MINIMUMS:

Rwy 2: Standard with minimum climb of 500' per NM to 687, then minimum climb of 372' per NM to 5000.
Rwys 16, 20: Standard with minimum climb of 500' per NM to 687, then minimum climb of 480' per NM to 4000.
Rwy 34: Standard with minimum climb of 500' per NM to 687, then minimum climb of 353' per NM to 5000.



NOTE: RNAV 1.
NOTE: DME/DME/IRU or GPS required.
NOTE: RADAR required for non-GPS equipped aircraft.

(NARRATIVE ON FOLLOWING PAGE)

NOTE: Chart not to scale.

LUCYL SIX DEPARTURE (RNAV)

(LUCYL6.LUCYL) 05DEC19

RICHMOND, VIRGINIA
RICHMOND INTL (RIC)

LUCYL SIX DEPARTURE (RNAV)



DEPARTURE ROUTE DESCRIPTION

TAKEOFF RUNWAY 2: Climb on heading 023° to 687 MSL, then climbing right turn direct to cross SJAYY at or above 5000, then on depicted route to LUCYL, thence. . . .

TAKEOFF RUNWAY 16: Climb on heading 157° to 687 MSL, then climbing left turn direct to cross KEGME at or above 4000, then on track 065° to cross BUNKK at or above 5000, then on depicted route to LUCYL, thence. . . .

TAKEOFF RUNWAY 20: Climb on heading 203° to 687 MSL, then climbing left turn direct to cross KEGME at or above 4000, then on track 065° to cross BUNKK at or above 5000, then on depicted route to LUCYL, thence. . . .

TAKEOFF RUNWAY 34: Climb on heading 337° to 687 MSL, then climbing right turn direct to cross SJAYY at or above 5000, then on depicted route to LUCYL, thence. . . .

. . . .maintain 5000, expect filed altitude within ten (10) minutes after departure.

NE-3, 22 FEB 2024 to 21 MAR 2024

NE-3, 22 FEB 2024 to 21 MAR 2024

(READE7, READE) 23334

AL-347 (FAA)


READE SEVEN DEPARTURE


RICHMOND INTL (RIC)
RICHMOND, VIRGINIA

TOP ALTITUDE:
5000


READE SEVEN DEPARTURE
(READE7, READE) 03DEC19

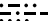
ATIS 119.15 263.025
CLNC DEL
127.55 348.6
GND CON
121.9 348.6
RICHMOND TOWER
121.1 257.8
POTOMAC DEP CON
126.75 307.2

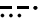
MONTEBELLO
115.3 MOL 
Chan 100

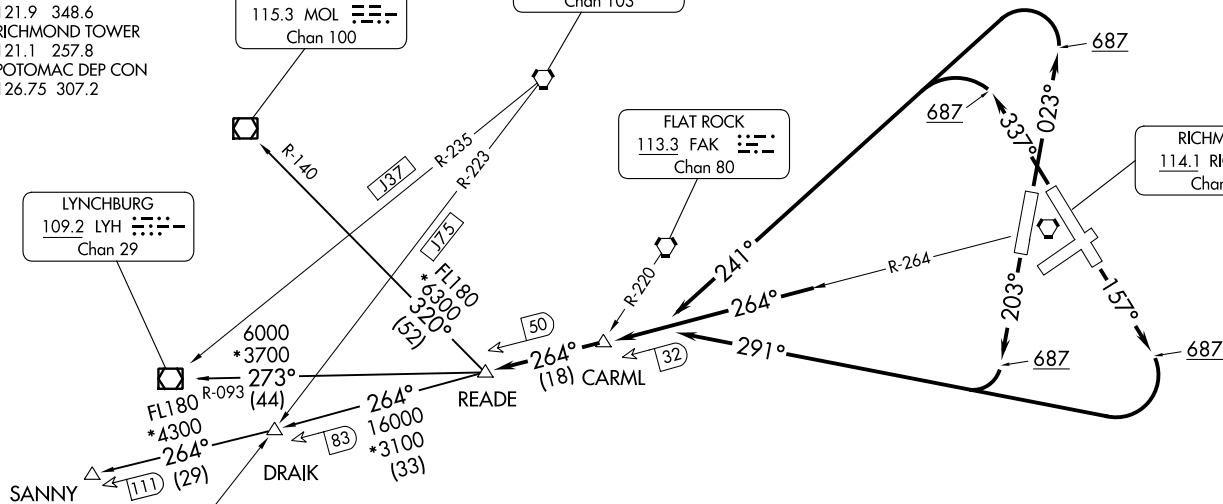
GORDONSVILLE
115.6 GVE 
Chan 103

FLAT ROCK
113.3 FAK 
Chan 80

RICHMOND
114.1 RIC 
Chan 88

LYNCHBURG
109.2 LYH 
Chan 29

GREENSBORO
116.2 GSO 
Chan 109



NOTE: DME required.

TAKEOFF MINIMUMS

Rwys 2, 16, 20, 34: Standard with minimum climb of 500' per NM to 687.

(NARRATIVE ON FOLLOWING PAGE)

NOTE: Chart not to scale.

RICHMOND VIRGINIA
RICHMOND INTL (RIC)

READE SEVEN DEPARTURE



DEPARTURE ROUTE DESCRIPTION

TAKEOFF RUNWAY 2: Climb heading 023° to 687, then climbing left turn heading 241°, thence

TAKEOFF RUNWAY 16: Climb heading 157° to 687, then climbing right turn heading 291°, thence

TAKEOFF RUNWAY 20: Climb heading 203° to 687, then climbing right turn heading 291°, thence

TAKEOFF RUNWAY 34: Climb heading 337° to 687, then climbing left turn heading 241°, thence

. . . . intercept RIC VORTAC R-264 to CARML INT/RIC 32 DME, then on RIC VORTAC R-264 to READE INT/RIC 50 DME, then on assigned transition, maintain 5000. Expect filed altitude within ten minutes after departure.

DRAIK TRANSITION (READE7.DRAIK): From over READE INT/RIC 50 DME on RIC R-264 to DRAIK INT.

LYNCHBURG TRANSITION (READE7.LYH): From over READE INT/RIC 50 DME on LYH R-093 to LYH VOR/DME.

MONTEBELLO TRANSITION (READE7.MOL): From over READE INT/RIC 50 DME on MOL R-140 to MOL VOR/DME.

SANNY TRANSITION (READE7.SANNY): From over READE INT/RIC 50 DME on RIC R-264 to SANNY.

NE-3, 22 FEB 2024 to 21 MAR 2024

NE-3, 22 FEB 2024 to 21 MAR 2024