

LOC/DME I-RDM <b>109.1</b> Chan <b>28</b>	APP CRS <b>226°</b>	Rwy Idg TDZE Apt Elev	<b>7031</b> <b>3067</b> <b>3082</b>
---	------------------------	-----------------------------	---

# ILS or LOC RWY 23

ROBERTS FLD (RDM)

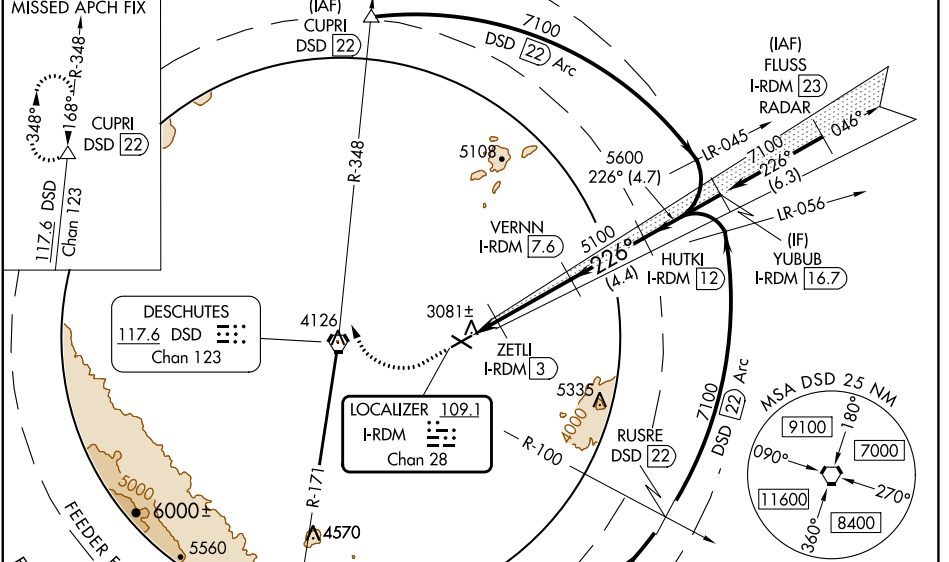
DME required.

**Autopilot coupled approach NA below 4370. When local altimeter setting not received, use Bend altimeter setting increase S-ILS 23 DA to 3348 feet; increase all MDAs 100 feet increase S-LOC 23 Cat C/D/E visibility 3/8 SM and Circling Cats C/D/E visibility 1/2 SM. For inop ALS, increase S-ILS 23 Cat E visibility to 3/4 SM and S-LOC 23 Cat C/D/E visibility to 1 SM. For inop ALS when using Bend altimeter setting increase S-ILS 23 all Cats visibility to 7/8 SM and increase S-LOC 23 Cats C/D/E visibility to 1 3/8 SM. VDP NA when using Bend altimeter setting.**

**MISSED APPROACH:** Climb to 3700 then climbing right turn to 7000 on heading 320° and DSD VORTAC R-348 to CUPRI/DSD 22 DME and hold.

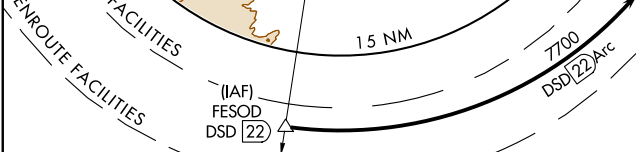
MALS R

ATIS <b>119.025</b>	SEATTLE CENTER <b>126.15 269.475</b>	REDMOND TOWER* <b>124.5 (CTAF) 1256.8</b>	GND CON <b>121.8</b>	UNICOM <b>122.95</b>
------------------------	---	--	-------------------------	-------------------------

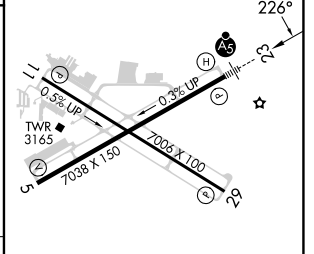
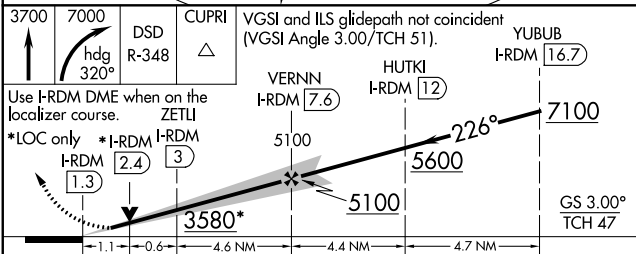


NW-1, 22 FEB 2024 to 21 MAR 2024

NW-1, 22 FEB 2024 to 21 MAR 2024



ELEV 3082	TDZE 3067
-----------	-----------



CATEGORY	A	B	C	D	E
S-ILS 23	3267-1/2 200 (200-1/2)				
S-LOC 23	3440-1/2	373 (400-1/2)	3440-5/8 373 (400-5/8)		
CIRCLING	3540-1 458 (500-1)	3560-1 478 (500-1)	3640-1 1/2 558 (600-1 1/2)	3740-2 658 (700-2)	3820-2 1/2 738 (800-2 1/2)

REIL Rwy 5, 11, and 29

HIRL Rwy 5-23

MIRL Rwy 11-29

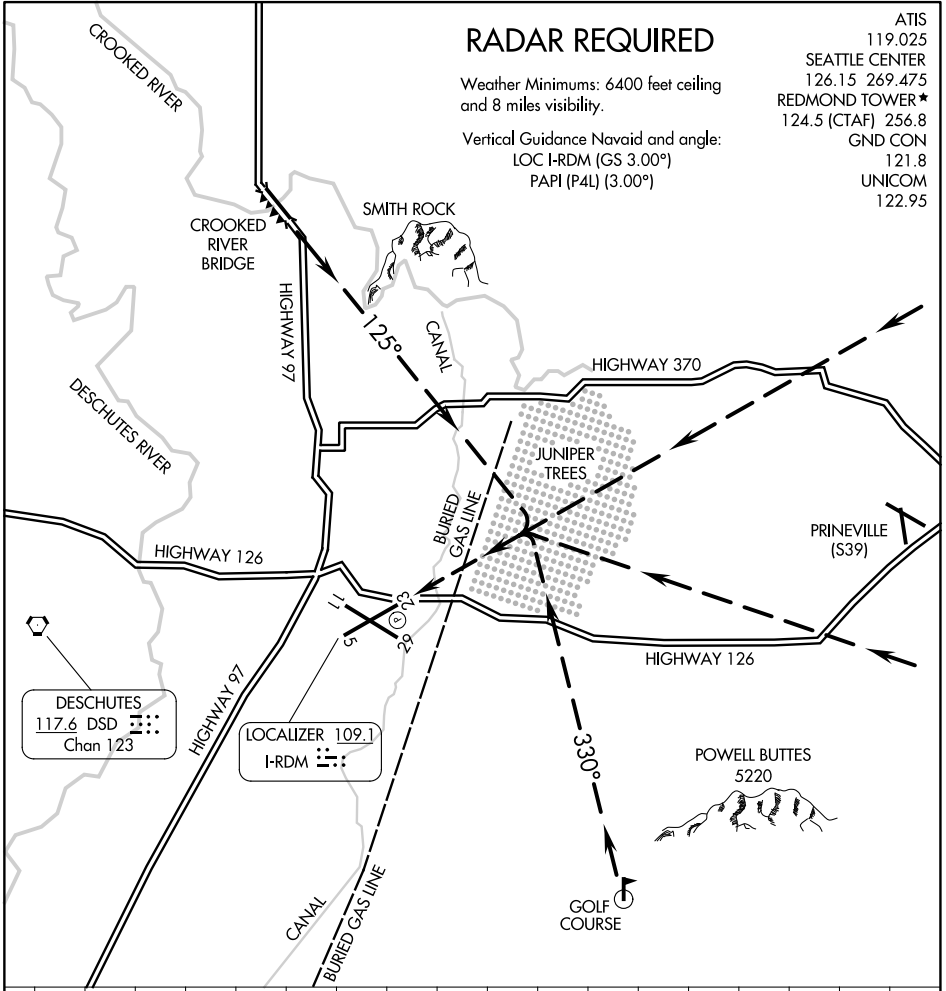
# JUNIPER VISUAL RWY 23

## RADAR REQUIRED

Weather Minimums: 6400 feet ceiling and 8 miles visibility.

Vertical Guidance Navaid and angle:  
LOC I-RDM (GS 3.00°)  
PAPI (P4L) (3.00°)

ATIS 119.025  
 SEATTLE CENTER 126.15 269.475  
 REDMOND TOWER \* 124.5 (CTAF) 256.8  
 GND CON 121.8  
 UNICOM 122.95



NW-1, 22 FEB 2024 to 21 MAR 2024

NW-1, 22 FEB 2024 to 21 MAR 2024

DESCHUTES  
 117.6 DSD  
 Chan 123

LOCALIZER 109.1  
 I-RDM

1 NM	2	3	4	5	6	7	8	9	10	11	12	13	14	15	16	17	18
------	---	---	---	---	---	---	---	---	----	----	----	----	----	----	----	----	----

JUNIPER VISUAL APPROACH RWY 23  
PROCEDURE NOT AUTHORIZED AT NIGHT

# JUNIPER VISUAL RWY 23

WAAS CH <b>53514</b> <b>W11A</b>	APP CRS <b>108°</b>	Rwy Idg TDZE Apt Elev	<b>7006</b> <b>3068</b> <b>3082</b>
--	------------------------	-----------------------------	---

# RNAV (GPS) RWY 11

ROBERTS FLD (RDM)

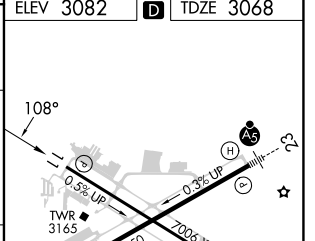
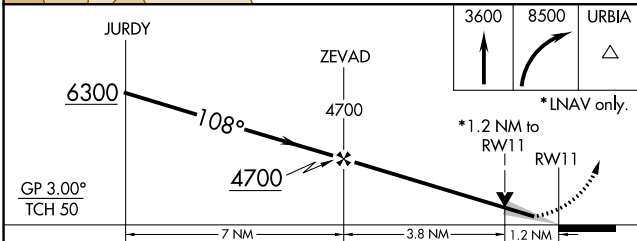
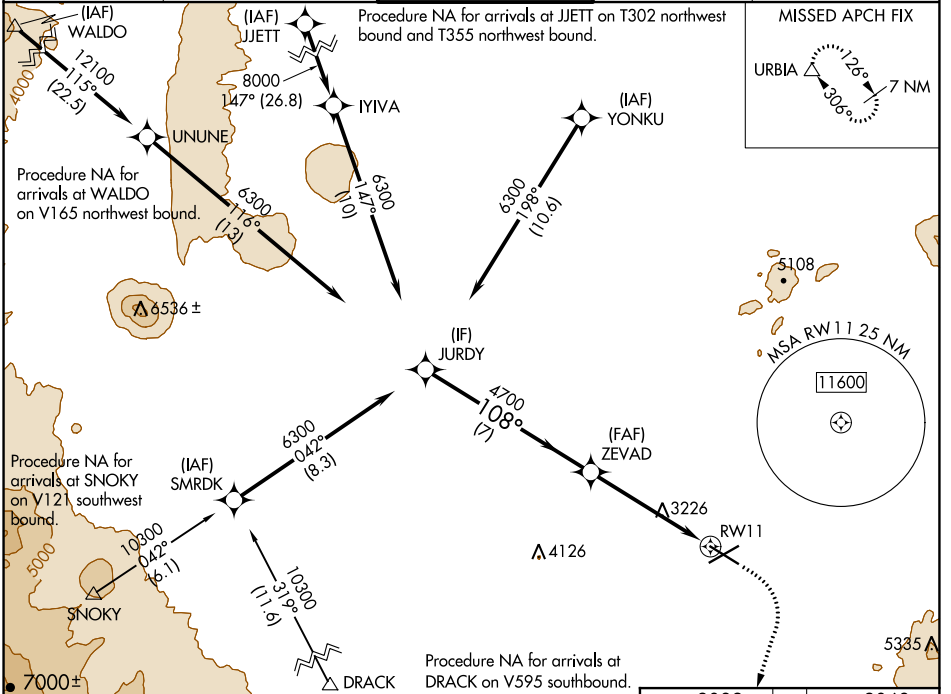
RNP APCH.

MISSED APPROACH: Climb to 3600 then climbing right turn to 8500 direct URBIA and hold, continue climb-in-hold to 8500.

For uncompensated Baro-VNAV systems,  
LNAV/VNAV NA below -22°C or above 54°C.

-17°C

ATIS <b>119.025</b>	SEATTLE CENTER <b>126.15 269.475</b>	REDMOND TOWER* <b>124.5 (CTAF) 256.8</b>	GND CON <b>121.8</b>	UNICOM <b>122.95</b>
------------------------	---	---	-------------------------	-------------------------



CATEGORY	A	B	C	D
LPV DA	3268-3/4		200 (200-3/4)	
LNAV/VNAV DA	3370-7/8		302 (300-7/8)	
LNAV MDA	3480-1	412 (400-1)	3480-1 1/8	412 (400-1 1/8)
CIRCLING	3540-1 458 (500-1)	3560-1 478 (500-1)	3640-1 1/2 558 (600-1 1/2)	3740-2 658 (700-2)

NW-1, 22 FEB 2024 to 21 MAR 2024

NW-1, 22 FEB 2024 to 21 MAR 2024

APP CRS	Rwy Idg	<b>7031</b>
<b>226°</b>	TDZE	<b>3065</b>
	Apt Elev	<b>3080</b>

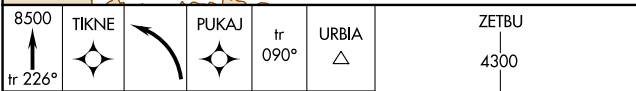
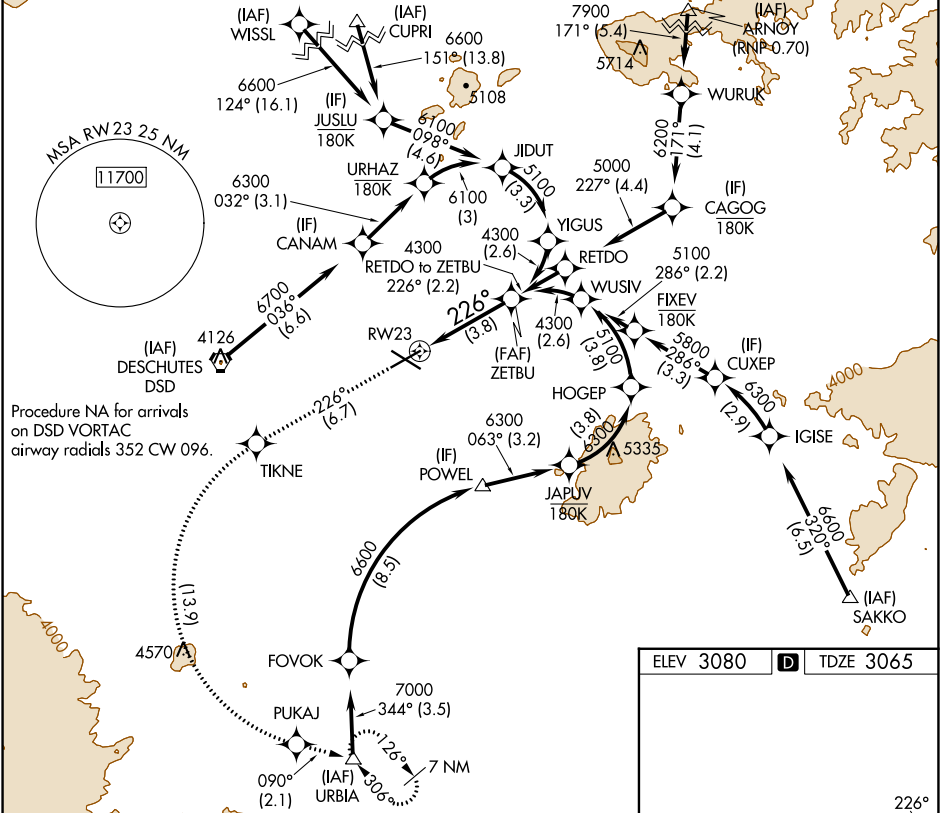
# RNAV (RNP) Z RWY 23

ROBERTS FLD (RDM)

**V** For uncompensated Baro-VNAV systems, procedure NA below -20°C (-4°F) or above 53°C (129°F). For inop MALS, increase RNP 0.10 all Cats visibility to ¾ mile. RF required. GPS required.

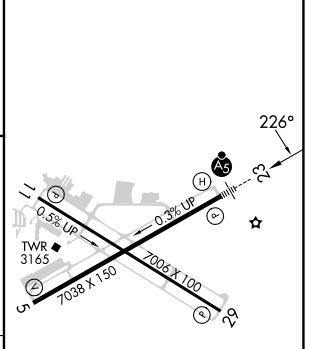
**MALS** MISSED APPROACH: Climb to 8500 on track 226° to TIKNE left turn to PUKAJ and on track 090° to URBIA and hold, continue climb-in-hold to 8500.

ATIS <b>119.025</b>	SEATTLE CENTER <b>126.15 269.475</b>	REDMOND TOWER* <b>124.5 (CTAF) 256.8</b>	GND CON <b>121.8</b>	UNICOM <b>122.95</b>
------------------------	---	---	-------------------------	-------------------------



VGSI and RNAV glidepath not coincident (VGSI Angle 3.00/TCH 51).  
 See planview for multiple IF locations.  
 GP 3.00° TCH 47  
 3.8 NM

ELEV 3080	<b>D</b>	TDZE 3065
-----------	----------	-----------



CATEGORY	A	B	C	D
RNP 0.10 DA		3315-½	250 (300-½)	
RNP 0.30 DA		3552-1¼	487 (500-1¼)	

**AUTHORIZATION REQUIRED**

REIL Rwy 5, 11, and 29  
 HIRL Rwy 5-23  
 MIRL Rwy 11-29

NW-1, 22 FEB 2024 to 21 MAR 2024

NW-1, 22 FEB 2024 to 21 MAR 2024

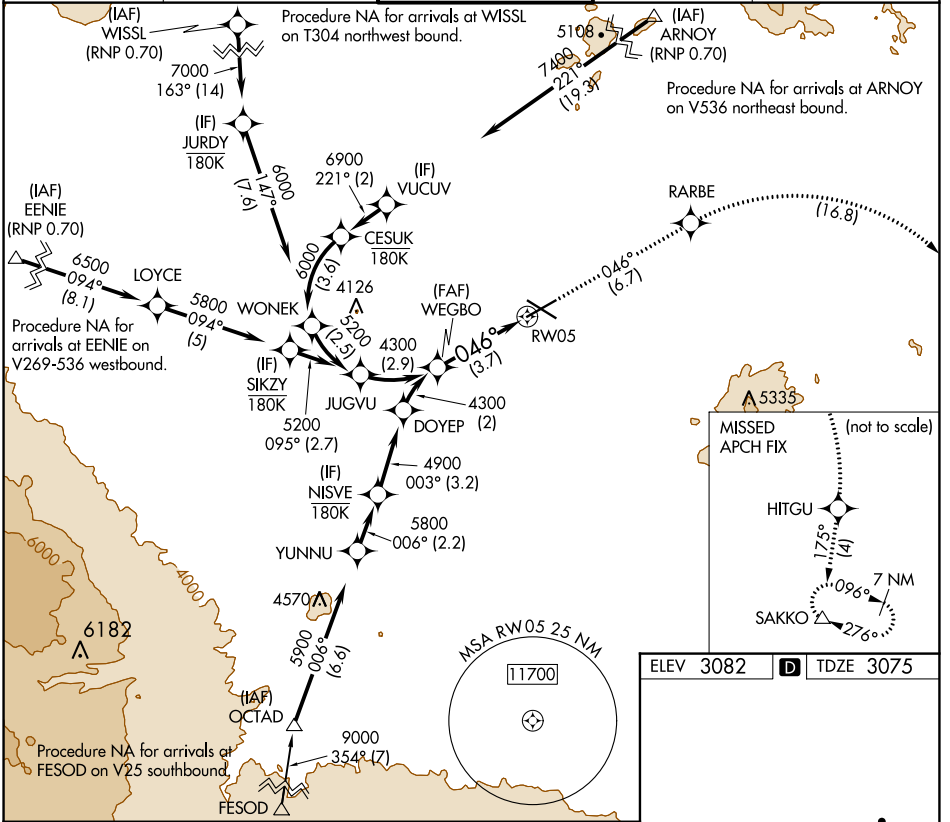
APP CRS	Rwy Idg	<b>7038</b>
<b>046°</b>	TDZE	<b>3075</b>
	Apt Elev	<b>3082</b>

# RNAV (RNP) Z RWY 5

ROBERTS FLD (RDM)

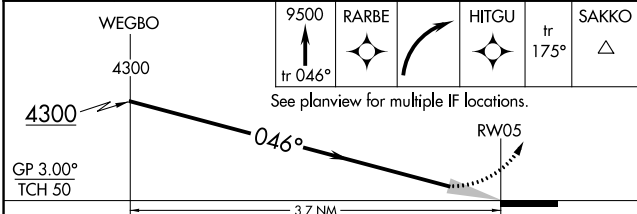
RNP AR APCH. RF required.	MISSED APPROACH: Climb to 9500 on track 046° to RARBE right turn to HITGU and on track 175° to SAKKO and hold, continue climb-in-hold to 9500.
▼ For uncompensated Baro-VNAV systems, procedure NA below -17°C or above 53°C.	

ATIS <b>119.025</b>	SEATTLE CENTER <b>126.15 269.475</b>	REDMOND TOWER* <b>124.5 (CTAF) 0 256.8</b>	GND CON <b>121.8</b>	UNICOM <b>122.95</b>
------------------------	---	---	-------------------------	-------------------------

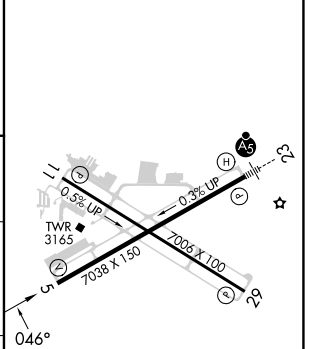


NW-1, 22 FEB 2024 to 21 MAR 2024

NW-1, 22 FEB 2024 to 21 MAR 2024



ELEV 3082	D	TDZE 3075
-----------	---	-----------



CATEGORY	A	B	C	D
RNP 0.10 DA		3351-7/8	276 (300-7/8)	
RNP 0.30 DA		3574-1 1/8	499 (500-1%)	

REIL Rwy 5, 11, and 29

HIRL Rwy 5-23

MIRL Rwy 11-29

## AUTHORIZATION REQUIRED

WAAS CH <b>82514</b> <b>W23A</b>	APP CRS <b>226°</b>	Rwy Idg TDZE Apt Elev	<b>7031</b> <b>3067</b> <b>3080</b>
--	------------------------	-----------------------------	---

# RNAV (GPS) Y RWY 23

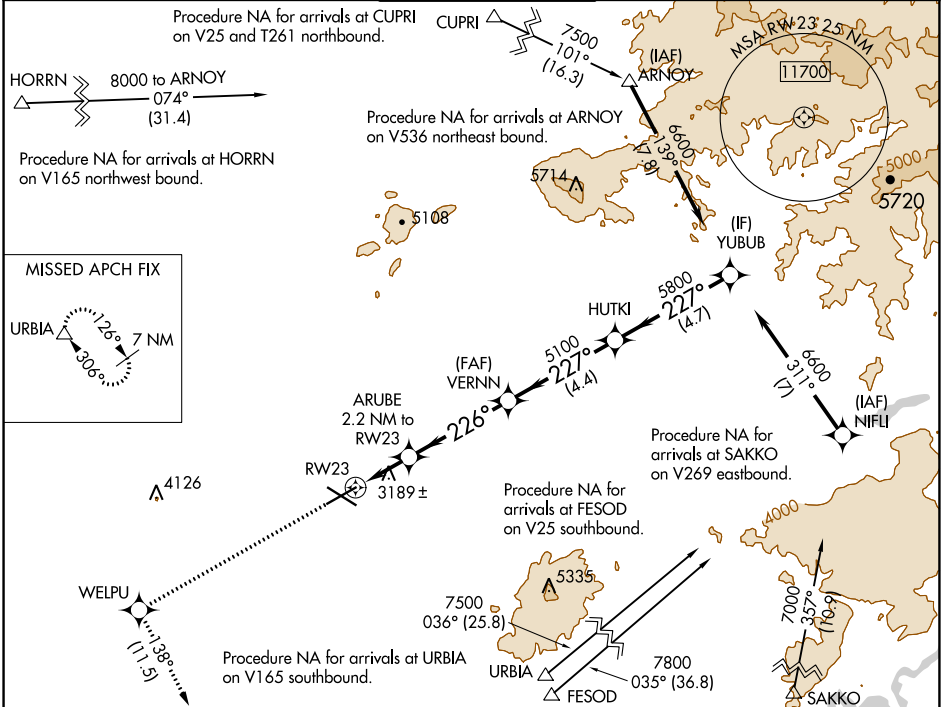
ROBERTS FLD (RDM)

**⚠** For uncompensated Baro-VNAV systems, LNAV/VNAV NA below -20°C (-4°F) or above 53°C (128°F).  
**⚠** -17°C  
 DME/DME RNP-0.3 NA. For inop ALS, increase LNAV/VNAV all Cats visibility to 3/8 SM and LNAV Cat C/D visibility to 1 SM.

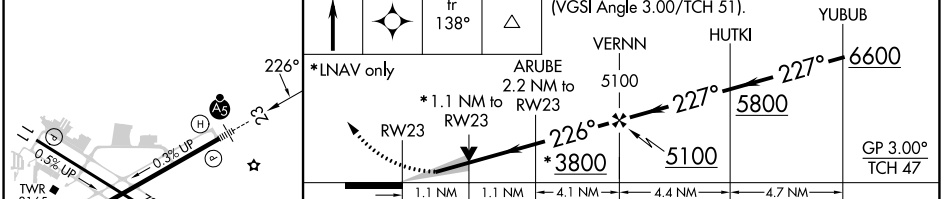
MALS R

MISSED APPROACH: Climb to 8500 direct WELPU and on track 138° to URBIA and hold, continue climb-in-hold to 8500.

ATIS <b>119.025</b>	SEATTLE CENTER <b>126.15 269.475</b>	REDMOND TOWER★ <b>124.5 (CTAF) 0 256.8</b>	GND CON <b>121.8</b>	UNICOM <b>122.95</b>
------------------------	---	---	-------------------------	-------------------------



ELEV 3080	<b>D</b>	TDZE 3067	8500	WELPU	tr 138°	URBIA	VGSI and RNAV glidepath not coincident (VGSI Angle 3.00/TCH 51).
-----------	----------	-----------	------	-------	---------	-------	--



CATEGORY	A	B	C	D
LPV DA		3267-1/2	200 (200-1/2)	
LNAV/VNAV DA		3383-5/8	316 (400-5/8)	
LNAV MDA	3440-1/2	373 (400-1/2)	3440-3/4	373 (400-3/4)
<b>C</b> CIRCLING	3540-1 460 (500-1)	3560-1 480 (500-1)	3640-1 1/2 560 (600-1 1/2)	3760-2 1/4 680 (700-2 1/4)

NW-1, 22 FEB 2024 to 21 MAR 2024

NW-1, 22 FEB 2024 to 21 MAR 2024

APP CRS	Rwy Idg	<b>7006</b>
<b>288°</b>	TDZE	<b>3080</b>
	Apt Elev	<b>3080</b>

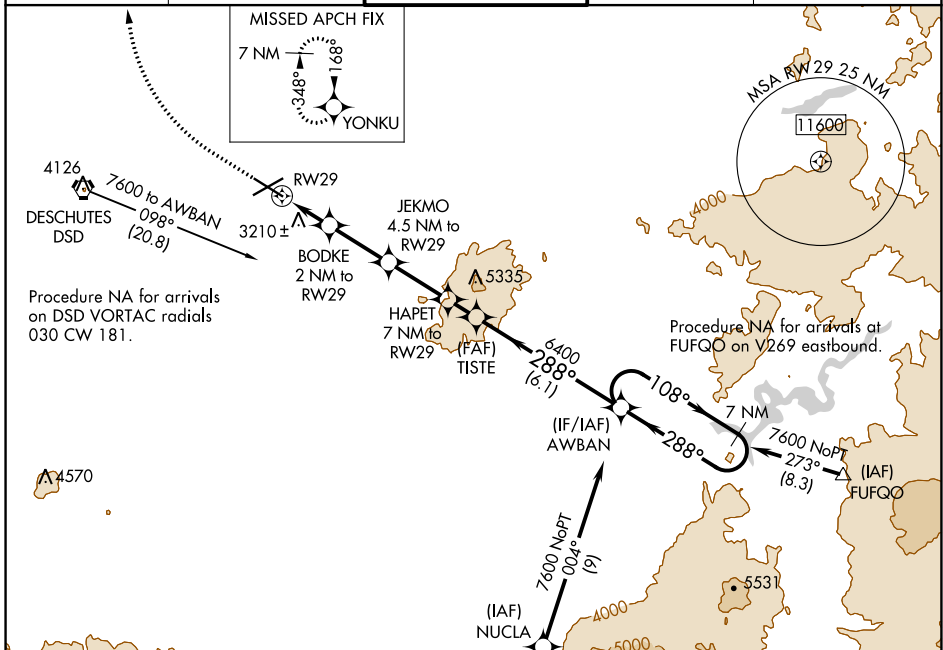
# RNAV (GPS) Y RWY 29

ROBERTS FLD (RDM)

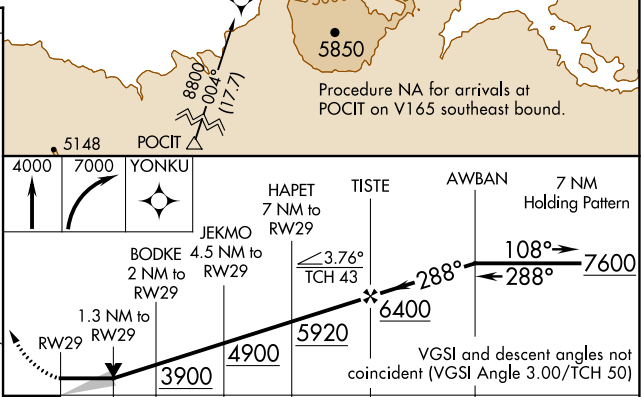
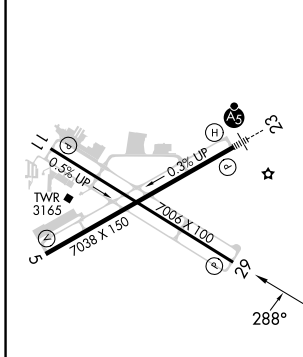
RNP APCH.
<b>3</b> -17°C

MISSED APPROACH: Climb to 4000 then climbing right turn to 7000 direct YONKU and hold, continue climb-in-hold to 7000.

ATIS <b>119.025</b>	SEATTLE CENTER <b>126.15 269.475</b>	REDMOND TOWER★ <b>124.5 (CTAF) 256.8</b>	GND CON <b>121.8</b>	UNICOM <b>122.95</b>
------------------------	---	---	-------------------------	-------------------------



ELEV 3080	<b>D</b>	TDZE 3080
-----------	----------	-----------



REIL Rws 5, 11, and 29			
HIRL Rwy 5-23			
MIRL Rwy 11-29			
CATEGORY	A	B	D
LNAV MDA	3560-1	480 (500-1)	3560-1 $\frac{3}{8}$ 480 (500-1 $\frac{3}{8}$ )
CIRCLING	3560-1	480 (500-1)	3640-1 $\frac{1}{2}$ 560 (600-1 $\frac{1}{2}$ )

WAAS CH <b>70514</b> <b>W05A</b>	APP CRS <b>046°</b>	Rwy Idg TDZE Apt Elev	<b>7038</b> <b>3075</b> <b>3082</b>
--	------------------------	-----------------------------	---

# RNAV (GPS) Y RWY 5

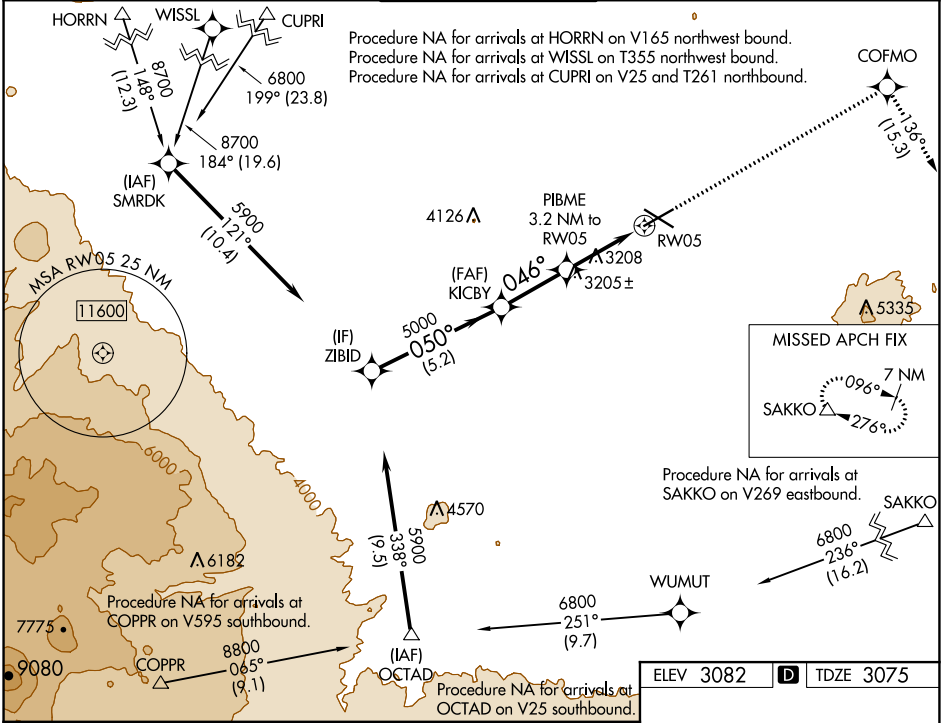
ROBERTS FLD (RDM)

RNP APCH.

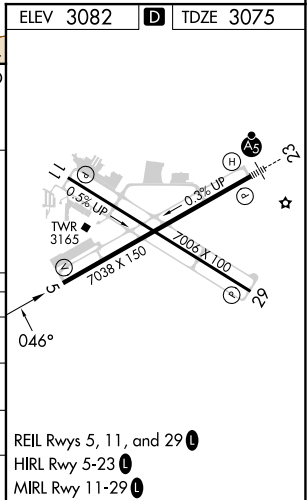
For uncompensated Baro-VNAV systems, LNAV/VNAV NA below -22°C or above 54°C.  
-17°C

MISSED APPROACH: Climb to 9500 direct COFMO and on track 136° to SAKKO and hold, continue climb-in-hold to 9500.

ATIS <b>119.025</b>	SEATTLE CENTER <b>126.15 269.475</b>	REDMOND TOWER* <b>124.5 (CTAF) 0 256.8</b>	GND CON <b>121.8</b>	UNICOM <b>122.95</b>
------------------------	---	---	-------------------------	-------------------------



	ZIBID	KICBY	9500	COFMO	tr 136°	SAKKO
	5900	5000	PIBME 3.2 NM to RW05	*1.2 NM to RW05		*LNAV only
	5000					
	5.2 NM	2.7 NM	2 NM	1.2 NM		
CATEGORY	A	B	C	D		
LPV DA		3275-3/4	200 (200-3/4)			
LNAV/VNAV DA		3347-7/8	272 (300-7/8)			
LNAV MDA	3520-1	445 (500-1)	3520-1 3/8	445 (500-1 3/8)		
CIRCLING	3540-1 458 (500-1)	3560-1 478 (500-1)	3640-1 1/2 558 (600-1 1/2)	3740-2 658 (700-2)		



NW-1, 22 FEB 2024 to 21 MAR 2024

NW-1, 22 FEB 2024 to 21 MAR 2024



WAAS CH <b>90214</b> <b>W29A</b>	APP CRS <b>288°</b>	Rwy Idg TDZE Apt Elev	<b>7006</b> <b>3082</b> <b>3082</b>
--	------------------------	-----------------------------	---

# RNAV (GPS) Z RWY 29

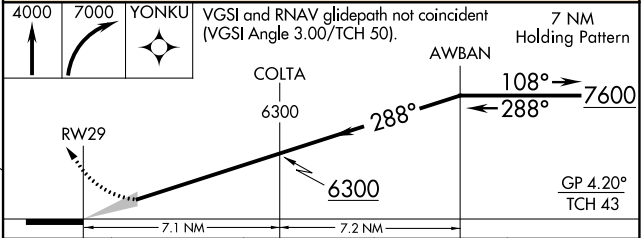
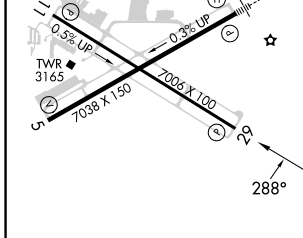
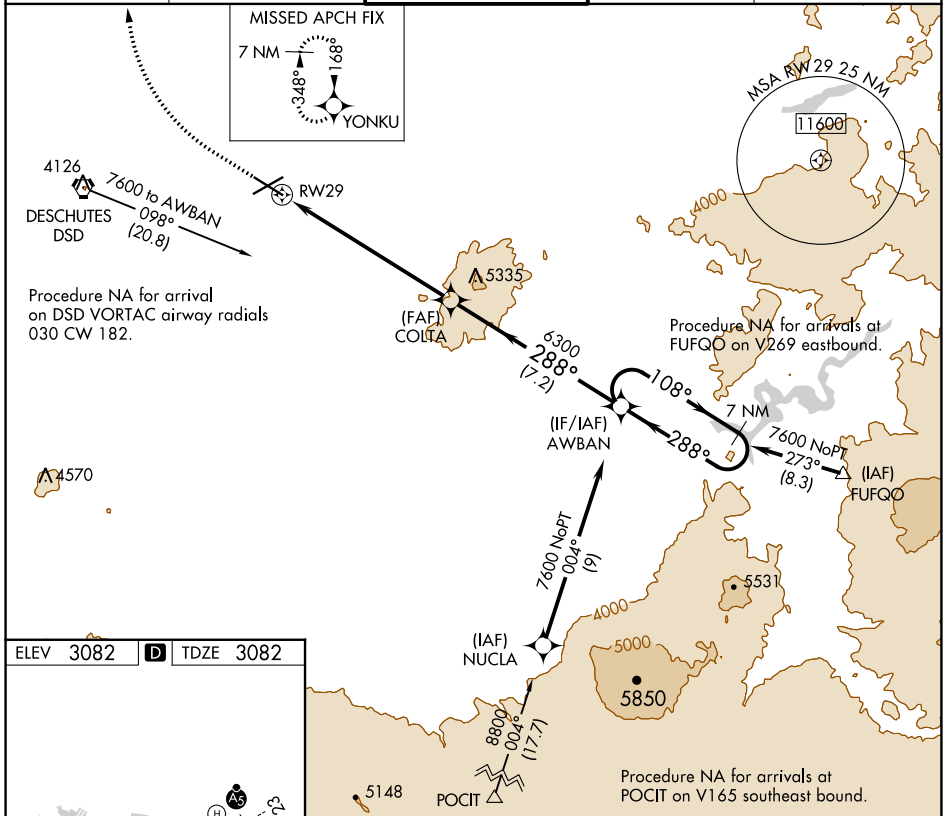
ROBERTS FLD (RDM)

RNP APCH-GPS.

**▲** For uncompensated Baro-VNAV systems, LNAV/VNAV NA below -18°C or above 43°C.  
**❄** -17°C

MISSED APPROACH: Climb to 4000 then climbing right turn to 7000 direct YONKU and hold, continue climb-in-hold to 7000.

ATIS <b>119.025</b>	SEATTLE CENTER <b>126.15 269.475</b>	REDMOND TOWER★ <b>124.5 (CTAF) 256.8</b>	GND CON <b>121.8</b>	UNICOM <b>122.95</b>
------------------------	---	---	-------------------------	-------------------------



CATEGORY	A	B	C	D
LPV DA	3368-1	286 (300-1)		NA
LNAV/VNAV DA	3368-1	286 (300-1)		NA

REIL Rwy 5, 11, and 29 **Ⓛ**  
HIRL Rwy 5-23 **Ⓛ**  
MIRL Rwy 11-29 **Ⓛ**

NW-1, 22 FEB 2024 to 21 MAR 2024

NW-1, 22 FEB 2024 to 21 MAR 2024

VORTAC DSD <b>117.6</b> Chan <b>123</b>	APP CRS <b>071°</b>	Rwy Idg TDZE Apt Elev <b>N/A</b> <b>N/A</b> <b>3080</b>
---	------------------------	--

# VOR-A

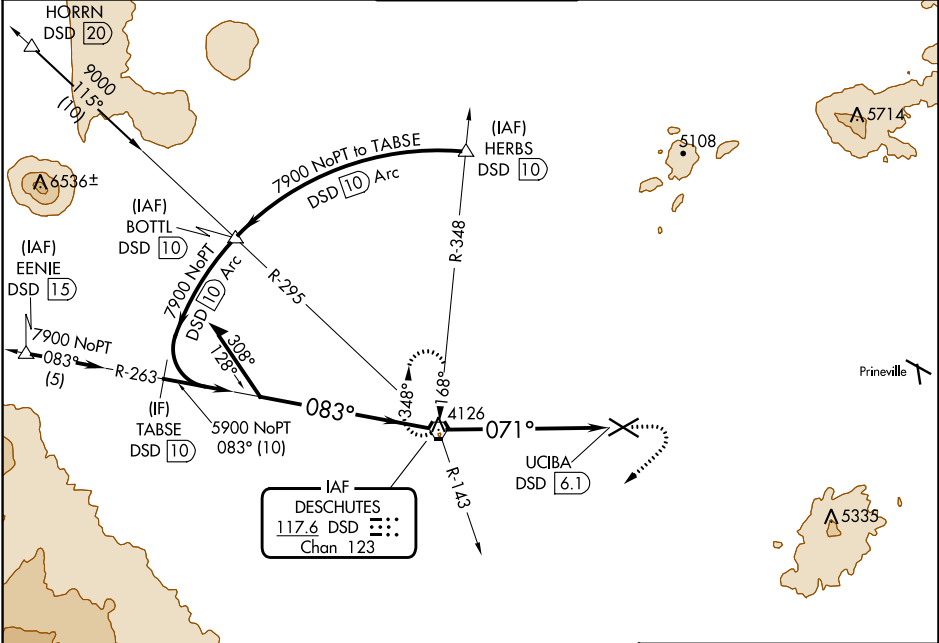
ROBERTS FLD (RDM)

When local altimeter setting not received, use Bend altimeter setting and increase all MDA 80 feet and visibility Cats C and D ¼ mile.

☁ -17°C

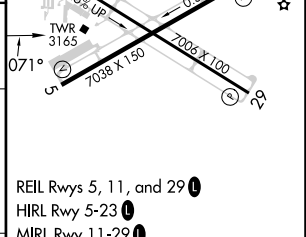
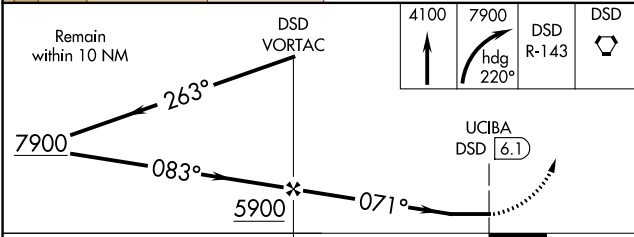
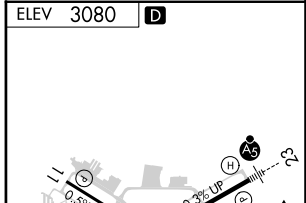
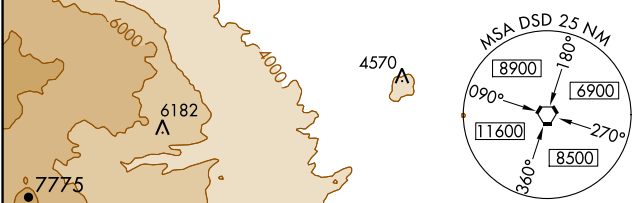
MISSED APPROACH: Climb to 4100 then climbing right turn to 7900 on heading 220° and on DSD VORTAC R-143 to DSD VORTAC and hold.

ATIS <b>119.025</b>	SEATTLE CENTER <b>126.15 269.475</b>	REDMOND TOWER* <b>124.5 (CTAF) 0 256.8</b>	GND CON <b>121.8</b>	UNICOM <b>122.95</b>
------------------------	---	---	-------------------------	-------------------------



NW-1, 22 FEB 2024 to 21 MAR 2024

NW-1, 22 FEB 2024 to 21 MAR 2024



CATEGORY	A	B	C	D	FAF to MAP 6.1 NM					
CIRCLING	3660-1	580 (600-1)	3660-1½ 580 (600-1½)	3760-2¼ 680 (700-2¼)	Knots	60	90	120	150	180
					Min:Sec	6:06	4:04	3:03	2:26	2:02