

WAAS CH 97735 W18A	APP CRS 182°	Rwy Idg TDZE Apt Elev	4000 936 936
--	------------------------	-----------------------------	---

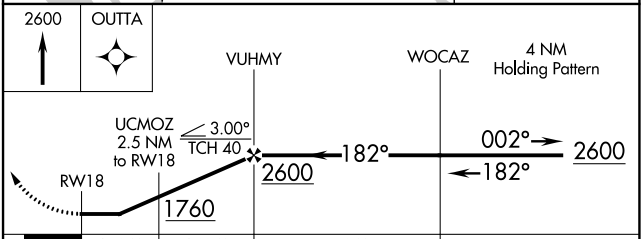
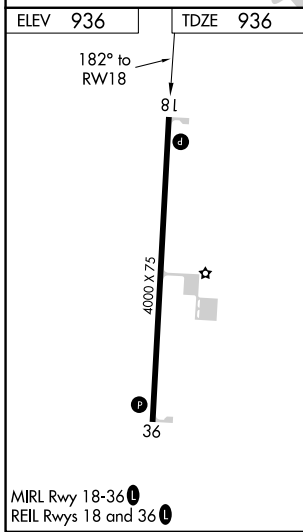
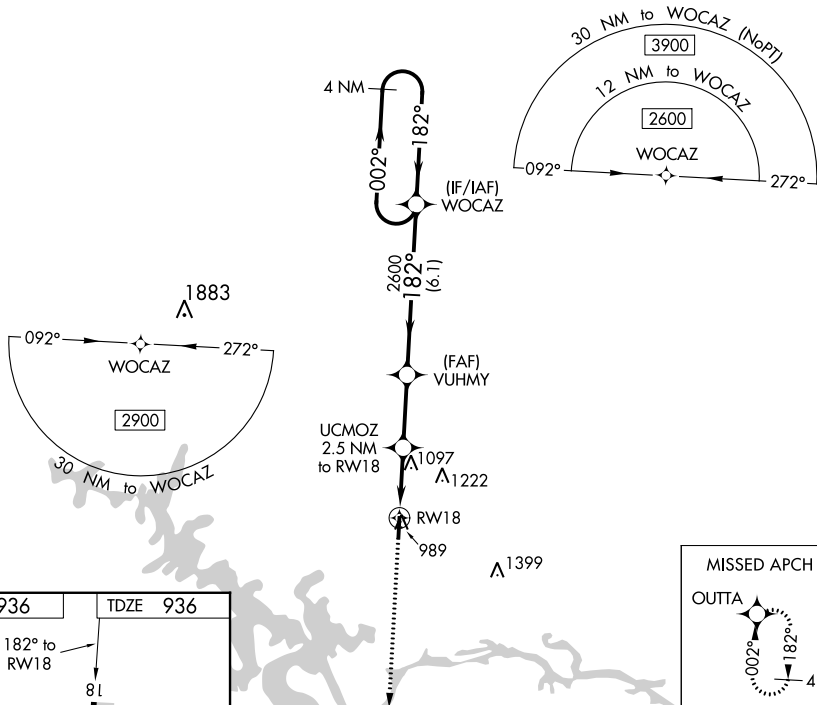
RNAV (GPS) RWY 18

WARSAW MUNI (R.A.W)

NA DME/DME RNP-0.3 NA. Helicopter visibility reduction below 1 SM NA. When local altimeter setting not received, use Clinton altimeter setting and increase all MDA 60 feet. Increase LP/LNAV Cat C/D visibility to 1 $\frac{3}{8}$ mile, and Circling Cat C/D visibility $\frac{1}{4}$ mile.

MISSED APPROACH: Climb to 2600 direct OUTTA and hold.

AWOS-3PT 118.325	WHITEMAN APP CON * 127.45 284.0	CTAF 122.9
----------------------------	---	----------------------



CATEGORY		A	B	C	D
LP	MDA	1320-1	384 (400-1)	1320-1 $\frac{1}{8}$	384 (400-1 $\frac{1}{8}$)
	LNAV MDA	1360-1	424 (500-1)	1360-1 $\frac{1}{4}$	424 (500-1 $\frac{1}{4}$)
C	CIRCLING	1360-1 424 (500-1)	1400-1 464 (500-1)	1580-1 $\frac{3}{4}$ 644 (700-1 $\frac{3}{4}$)	1580-2 644 (700-2)

NC-3, 22 FEB 2024 to 21 MAR 2024

NC-3, 22 FEB 2024 to 21 MAR 2024

WAAS CH 56635 W36A	APP CRS 002°	Rwy Idg TDZE Apt Elev	4000 936 936
--	------------------------	-----------------------------	---

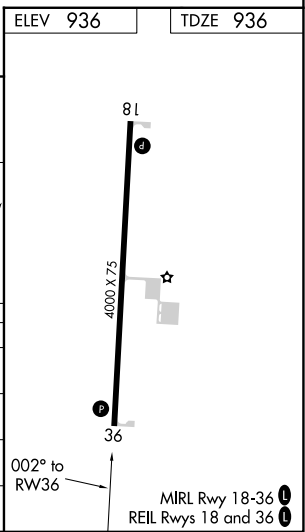
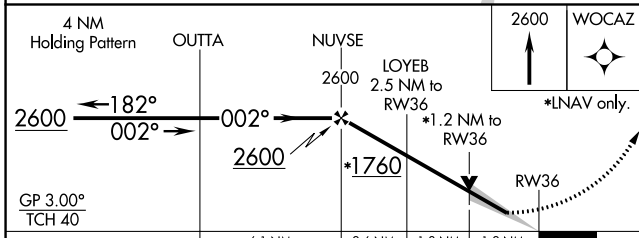
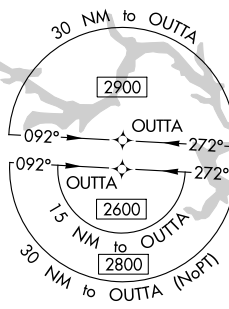
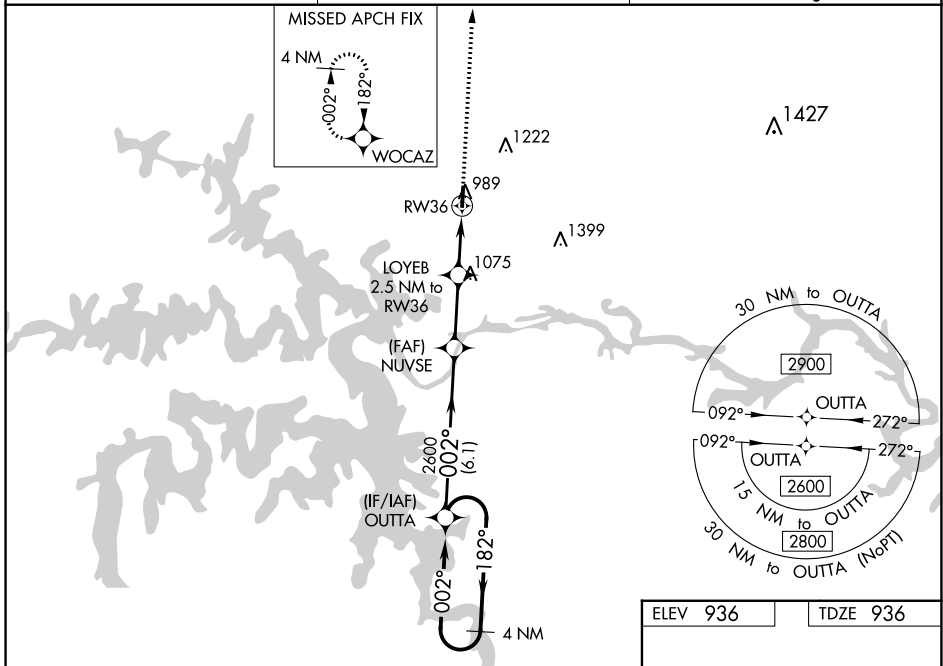
RNAV (GPS) RWY 36

WARSAW MUNI (R.A.W)

NA Baro-VNAV and VDP NA when using Clinton altimeter setting. For uncompensated Baro-VNAV systems, LNAV/VNAV NA below -1.6°C (4°F) or above 54°C (130°F). DME/DME RNP-0.3 NA. Helicopter visibility reduction below 1 SM NA. When local altimeter not received, use Clinton altimeter setting and increase all DA 53 feet and all MDA 60 feet. Increase LNAV/VNAV all Cats visibility to 1½ mile, LNAV Cats C/D visibility to 1¾ mile and Circling Cat C visibility to 2 and Cat D visibility to 2¼ mile.

MISSED APPROACH:
Climb to 2600 direct WOCAZ and hold.

AWOS-3PT 118.325	WHITEMAN APP CON * 127.45 284.0	CTAF 122.9
----------------------------	---	----------------------



CATEGORY	A	B	C	D
LPV DA		1136-1	200 (200-1)	
LNAV/VNAV DA		1215-1	279 (300-1)	
LNAV MDA	1340-1	404 (500-1)	1340-1½	404 (500-1½)
C CIRCLING	1340-1 404 (500-1)	1400-1 464 (500-1)	1580-1¾ 644 (700-1¾)	1580-2 644 (700-2)

NC-3, 22 FEB 2024 to 21 MAR 2024

NC-3, 22 FEB 2024 to 21 MAR 2024