

LOC I-PWK 109.75	APP CRS 161°	Rwy Idg 5001
		TDZE 643
		Apt Elev 647

ILS or LOC RWY 16

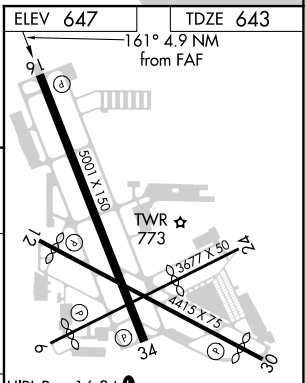
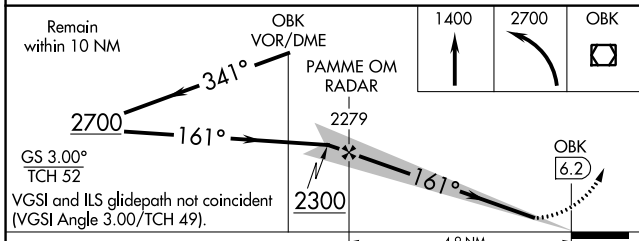
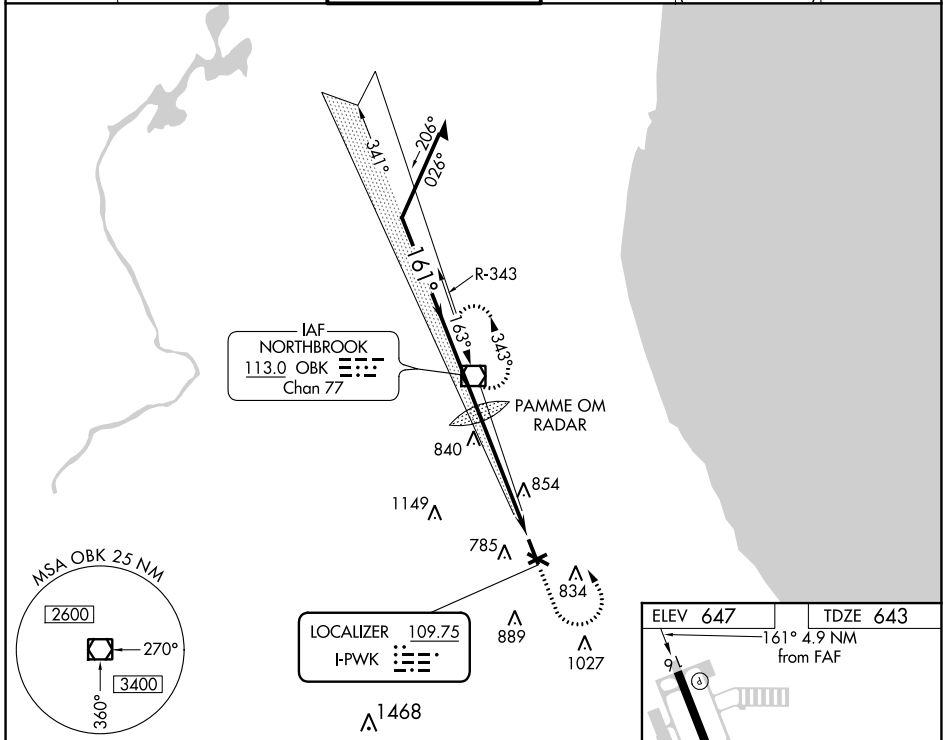
CHICAGO EXEC (PWK)

RADAR required for procedure entry.

▼ When local altimeter setting not received, use Chicago-O'Hare Intl altimeter setting: increase DA to 949 feet and all visibilities ¼ SM; increase all MDAs 40 feet and visibility S-LOC 16 Cats C and D ¼ SM. Rwy 16 helicopter visibility reduction below ¼ SM NA. Circling Rwy 6, 12, 24, 30, 34 NA at night. Autopilot coupled approach NA below 1125.

▲ MISSED APPROACH: Climb to 1400 then climbing left turn to 2700 direct OBK VOR/DME and hold.

ATIS 124.2	CHICAGO APP CON 120.55 306.925	EXECUTIVE TOWER ★ 119.9 (CTAF) 0	GND CON 121.7	CLNC DEL 124.7 (when tower closed)	UNICOM 122.95
----------------------	--	--	-------------------------	---	-------------------------



CATEGORY	A	B	C	D
S-ILS 16	927-1 284 (300-1)			
S-LOC 16	1140-1	497 (500-1)	1140-1½ 497 (500-1½)	1140-1½ 497 (500-1½)
CIRCLING	1140-1 493 (500-1)	1160-1 513 (600-1)	1200-1½ 553 (600-1½)	1460-2¾ 813 (900-2¾)

HIRL Rwy 16-34
MIRL Rwys 6-24 and 12-30
REIL Rwys 12 and 30
REIL Rwys 16 and 34
RLLS Rwy 16

FAF to MAP 4.9 NM

Knots	60	90	120	150	180
Min:Sec	4:54	3:16	2:27	1:58	1:38

EC-3, 20 MAY 2021 to 17 JUN 2021

EC-3, 20 MAY 2021 to 17 JUN 2021

VOR/DME OBK 113.0 Chan 77	APP CRS 164°	Rwy Idg TDZE 5001 643	Apt Elev 647
--	------------------------	---	------------------------

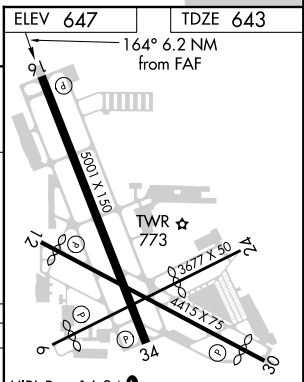
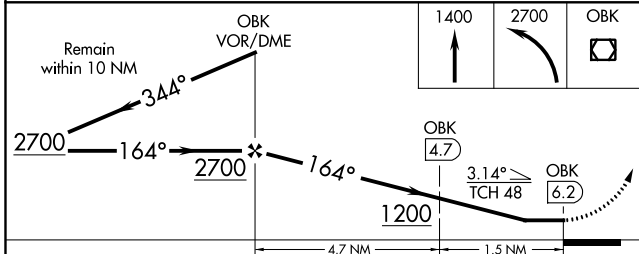
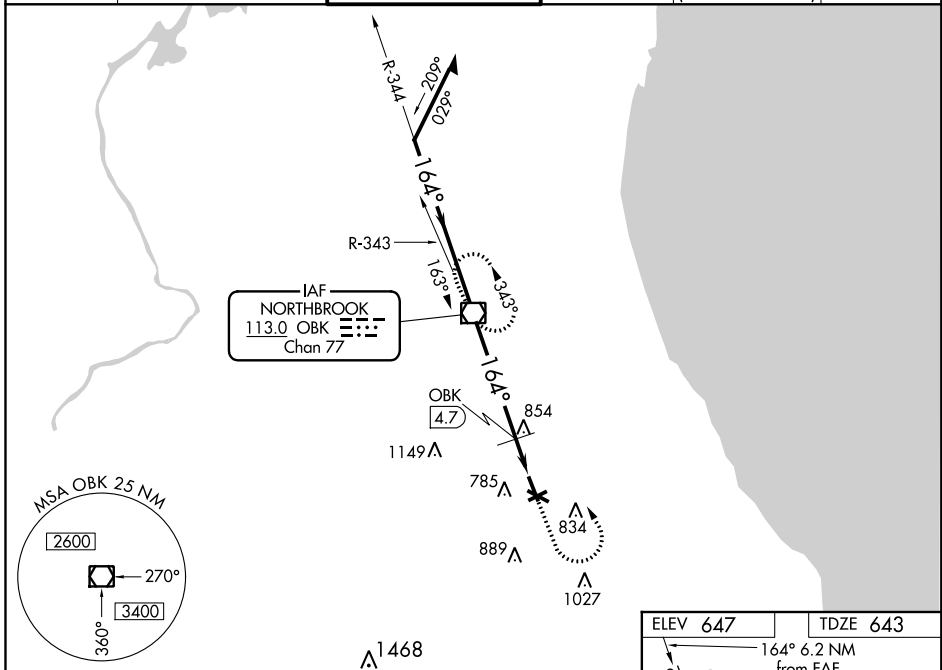
VOR RWY 16

CHICAGO EXEC (PWK)

⚠ Rwy 16 helicopter visibility reduction below 3/4 SM NA. When local altimeter setting not received, use Chicago-O'Hare Intl altimeter setting: increase all MDAs 40 feet and visibility DME minimums S-16 Cats C and D 1/4 SM. Circling Rwy 6, 12, 24, 30 NA at night.

⚠ MISSED APPROACH: Climb to 1400, then climbing left turn to 2700 direct OBK VOR/DME and hold.

ATIS 124.2	CHICAGO APP CON 120.55 306.925	EXECUTIVE TOWER ★ 119.9 (CTAF) 0	GND CON 121.7	CLNC DEL 124.7 (when tower closed)	UNICOM 122.95
----------------------	--	--	-------------------------	---	-------------------------



CATEGORY	A		B		C		D	
	1200-1	557 (600-1)	1200-1	557 (600-1)	1200-1 1/2	557 (600-1 1/2)	1200-1 3/4	557 (600-1 3/4)
S-16	1200-1	557 (600-1)	1200-1	557 (600-1)	1200-1 1/2	557 (600-1 1/2)	1200-1 3/4	557 (600-1 3/4)
CIRCLING	1200-1	553 (600-1)	1200-1	553 (600-1)	1200-1 1/2	553 (600-1 1/2)	1460-2 3/4	813 (900-2 3/4)
DME MINIMUMS								
S-16	1120-1	477 (500-1)	1120-1 1/4	477 (500-1 1/4)	1120-1 1/2	477 (500-1 1/2)		
CIRCLING	1140-1	513 (600-1)	1200-1 1/2	553 (600-1 1/2)	1460-2 3/4	813 (900-2 3/4)		

ELEV 647	TDZE 643
164° 6.2 NM from FAF	
HIRL Rwy 16-34 MRL Rws 6-24 and 12-30 REL Rws 12 and 30 REL Rws 16 and 34 RLLS Rwy 16	
FAF to MAP 6.2 NM	
Knots	60 90 120 150 180
Min:Sec	6:12 4:08 3:06 2:29 2:04

EC-3, 20 MAY 2021 to 17 JUN 2021

EC-3, 20 MAY 2021 to 17 JUN 2021