

WAAS CH 97729 W12A	APP CRS 122°	Rwy Idg TDZE Apt Elev	3900 2252 2264
--	------------------------	-----------------------------	---

RNAV (GPS) RWY 12

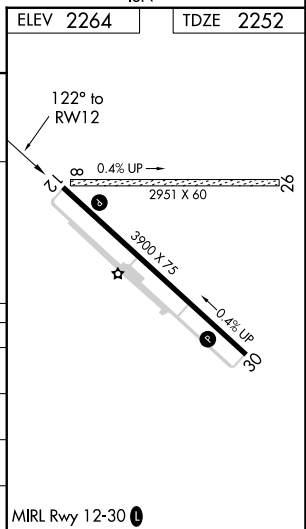
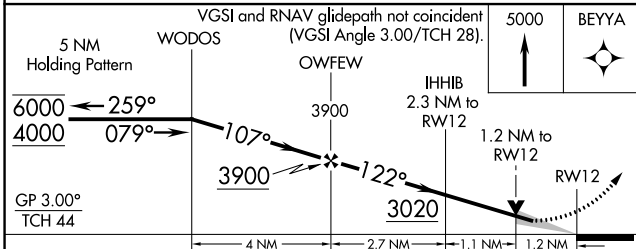
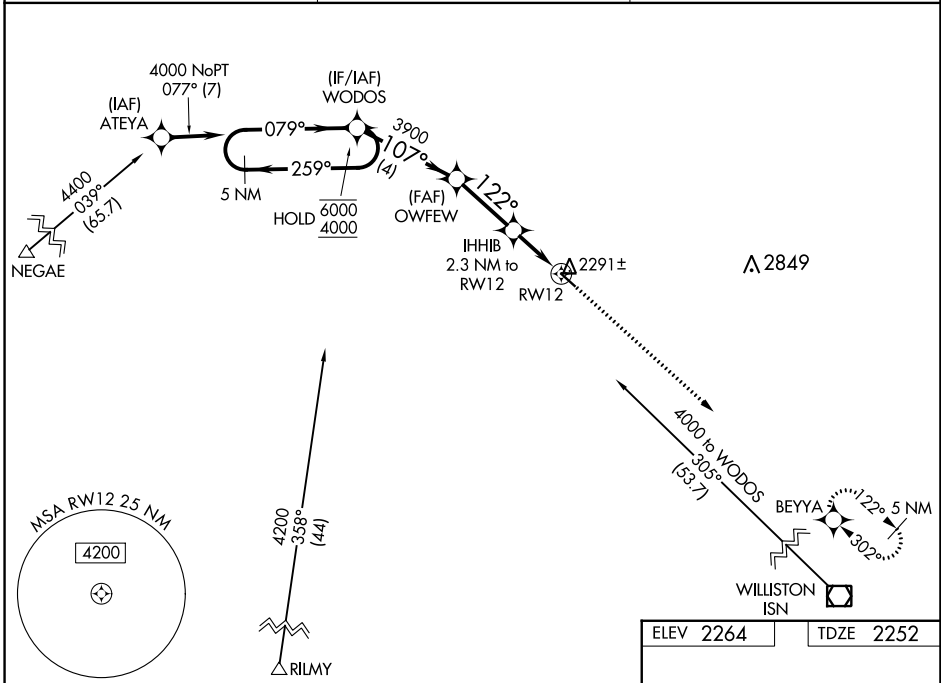
SHER-WOOD (PWD)

RNP APCH-GPS.

⚠ Circling Rwy 8, 26 NA at night. For uncompensated Baro-VNAV systems, LNAV/VNAV NA below -19°C or above 54°C. When local altimeter setting not received, use Williston altimeter setting.

MISSED APPROACH: Climb to 5000 direct BEYYA and hold.

AWOS-3 135.025	SALT LAKE CENTER 126.85 305.2	UNICOM 122.8 (CTAF) 0
--------------------------	---	---------------------------------



CATEGORY	A	B	C	D
LPV DA	2567-7/8		315 (400-7/8)	
LNAV/VNAV DA	2617-1		365 (400-1)	
LNAV MDA	2660-1	408 (400-1)	2660-1 1/8	408 (400-1 1/8)
C CIRCLING	2780-1	516 (600-1)	2880-1 3/4 616 (700-1 3/4)	3100-2 3/4 836 (900-2 3/4)

NW-1, 22 FEB 2024 to 21 MAR 2024

NW-1, 22 FEB 2024 to 21 MAR 2024

WAAS CH 50529 W30A	APP CRS 302°	Rwy Idg TDZE Apt Elev	3900 2247 2264
--	------------------------	-----------------------------	---

RNAV (GPS) RWY 30

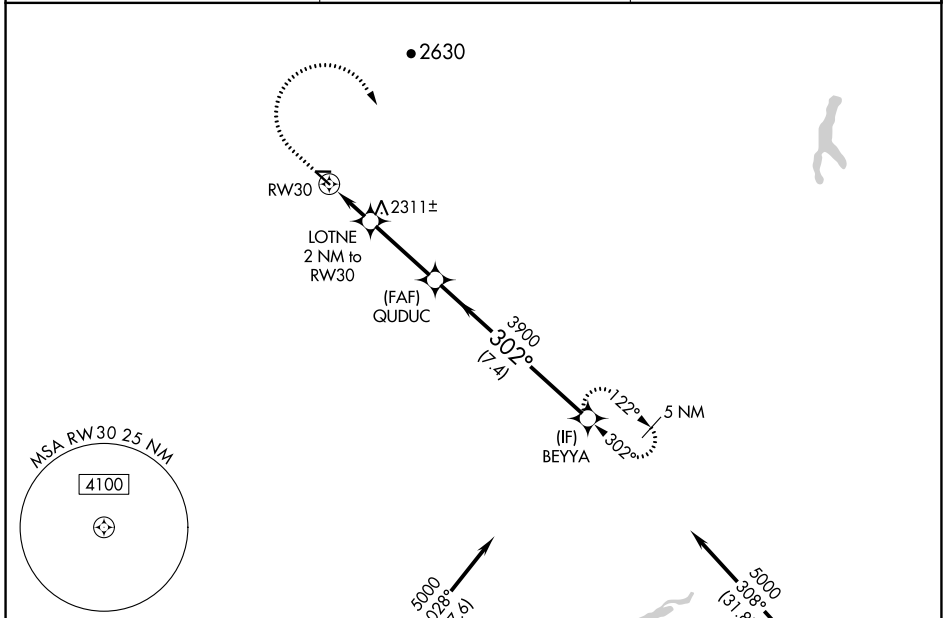
SHER-WOOD (PWD)

RNP APCH-GPS.

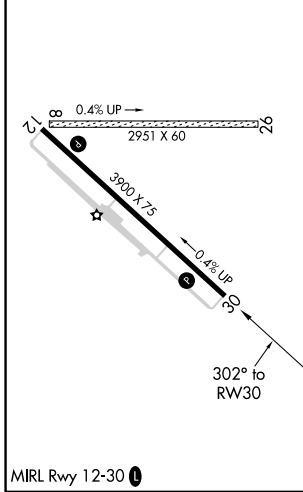
⚠ Circling Rwy 8, 26 NA at night. For uncompensated Baro-VNAV systems, LNAV/VNAV NA below -19°C or above 54°C. When local altimeter setting not received, use Williston altimeter setting.

MISSED APPROACH: Climb to 2900 then climbing right turn to 5000 direct BEYYA and hold.

AWOS-3 135.025	SALT LAKE CENTER 126.85 305.2	UNICOM 122.8 (CTAF) 0
--------------------------	---	---------------------------------



ELEV 2264	TDZE 2247
-----------	-----------



2900	5000	BEYYA	VGSI and RNAV glidepath not coincident (VGSI Angle 3.00/TCH 28).		BEYYA
(IAF) RILMY	(IAF) WILLISTON ISN	LOTNE 2 NM to RW30	GUDUC	3900	5000
		1.3 NM to RW30	3900	302°	GP 3.00° TCH 34
		1.3 NM	0.7 NM	3.1 NM	7.4 NM
CATEGORY	A	B	C	D	
LPV DA		2562-3/4	315 (300-3/4)		
LNAV/VNAV DA		2612-1	365 (400-1)		
LNAV MDA	2680-1	433 (500-1)	2680-1 1/4	433 (500-1 1/4)	
C CIRCLING	2780-1	516 (600-1)	2880-1 3/4 616 (700-1 3/4)	3100-2 3/4 836 (900-2 3/4)	

NW-1, 22 FEB 2024 to 21 MAR 2024

NW-1, 22 FEB 2024 to 21 MAR 2024