

LOC I-PWA 110.15	APP CRS 175°	Rwy Idg 6844
		TDZE 1291
		Apt Elev 1300

ILS or LOC RWY 17L

WILEY POST (PWA)

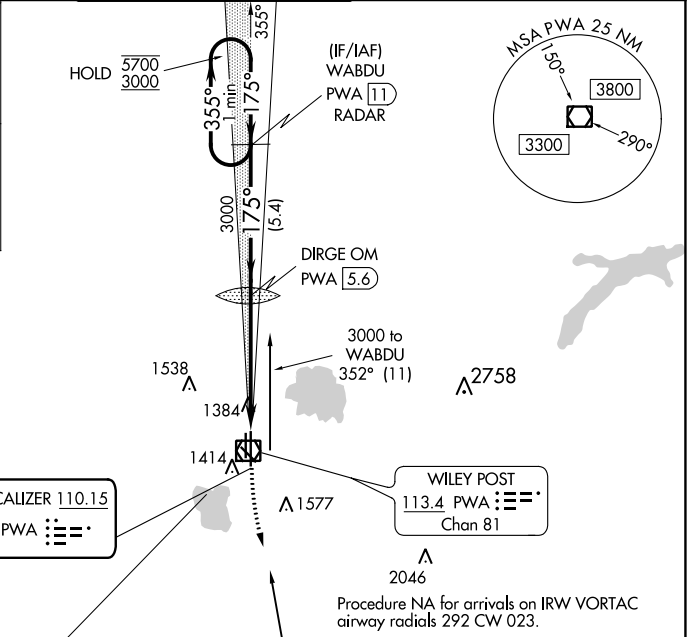
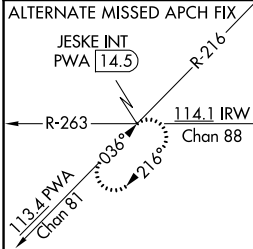
DME or RADAR required.

ASR

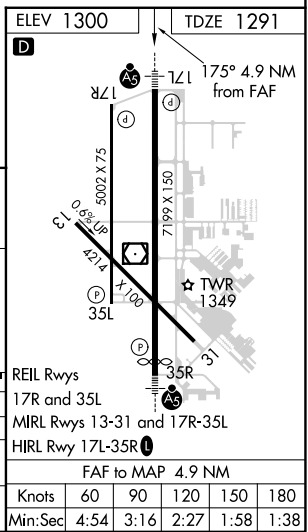
MALSR

MISSED APPROACH: Climb to 1800 then climbing left turn to 3000 direct IRW VORTAC and hold.

ATIS 128.725	OKC CITY APP CON 124.6 266.8	WILEY POST TOWER * 126.9 (CTAF) 0 306.9	GND CON 121.7	UNICOM 122.95
------------------------	--	---	-------------------------	-------------------------



One Minute Holding Pattern	WABDU PWA 11 RADAR	DIRGE OM PWA 5.6	1800	3000	IRW
5700 ← 355°	175° →	2904	PWA 1.6	PWA 0.7	
3000		3000			
GS 3.00° TCH 54					
	5.4 NM	4 NM	0.9 NM		
CATEGORY	A	B	C	D	
S-ILS 17L		1491-1/2	200 (200-1/2)		
S-LOC 17L	1640-1/2	349 (400-1/2)	1640-5/8	349 (400-5/8)	
CIRCLING	1780-1	480 (500-1)	1880-1/2 580 (600-1/2)	1880-2 580 (600-2)	



SC-1, 22 FEB 2024 to 21 MAR 2024

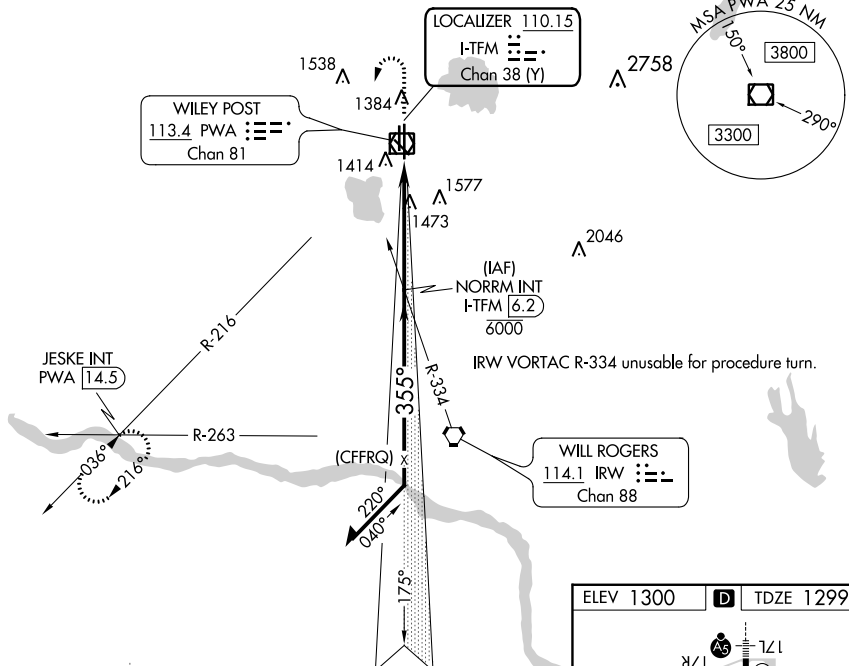
SC-1, 22 FEB 2024 to 21 MAR 2024

LOC/DME I-TFM 110.15 Chan 38 (Y)	APP CRS 355°	Rwy Idg 6844 TDZE 1299 Apt Elev 1300
--	------------------------	---

ILS or LOC RWY 35R

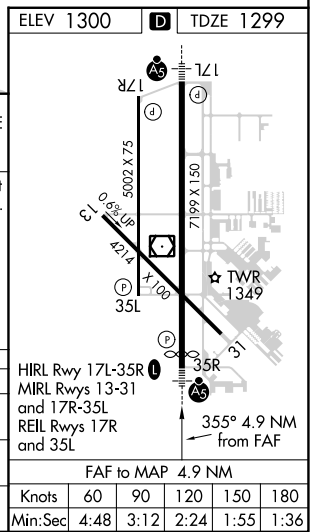
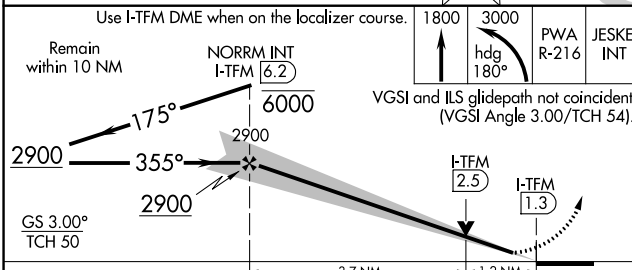
WILEY POST (PWA)

DME and RADAR required.		MALSR	MISSED APPROACH: Climb to 1800 then climbing left turn to 3000 on heading 180° and PWA VOR/DME R-216 to JESKE INT/PWA 14.5 DME and hold.	
ATIS 128.725	OKE CITY APP CON 124.6 266.8	WILEY POST TOWER ★ 126.9 (CTAF) 306.9	GND CON 121.7	UNICOM 122.95



SC-1, 22 FEB 2024 to 21 MAR 2024

SC-1, 22 FEB 2024 to 21 MAR 2024



CATEGORY	A	B	C	D
S-ILS 35R	1499-1/2		200 (200-1/2)	
S-LOC 35R	1740-1/2	441 (500-1/2)	1740-7/8	441 (500-7/8)
CIRCLING	1780-1	480 (500-1)	1880-1 1/2 580 (600-1 1/2)	1880-2 580 (600-2)

FAF to MAP 4.9 NM					
Knots	60	90	120	150	180
Min:Sec	4:48	3:12	2:24	1:55	1:36

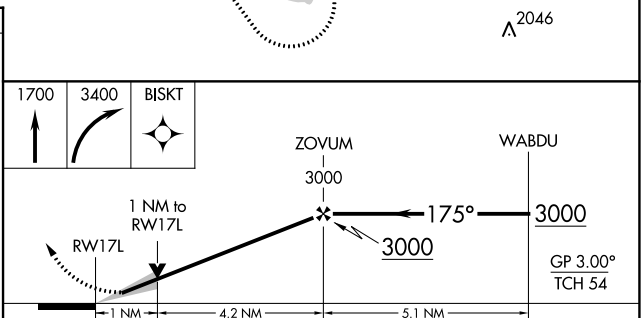
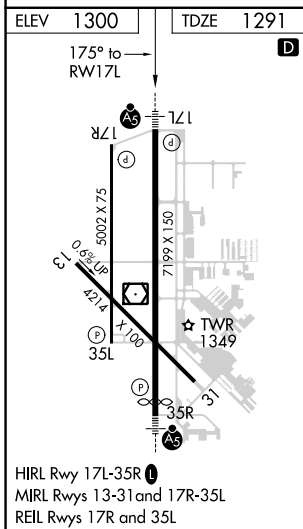
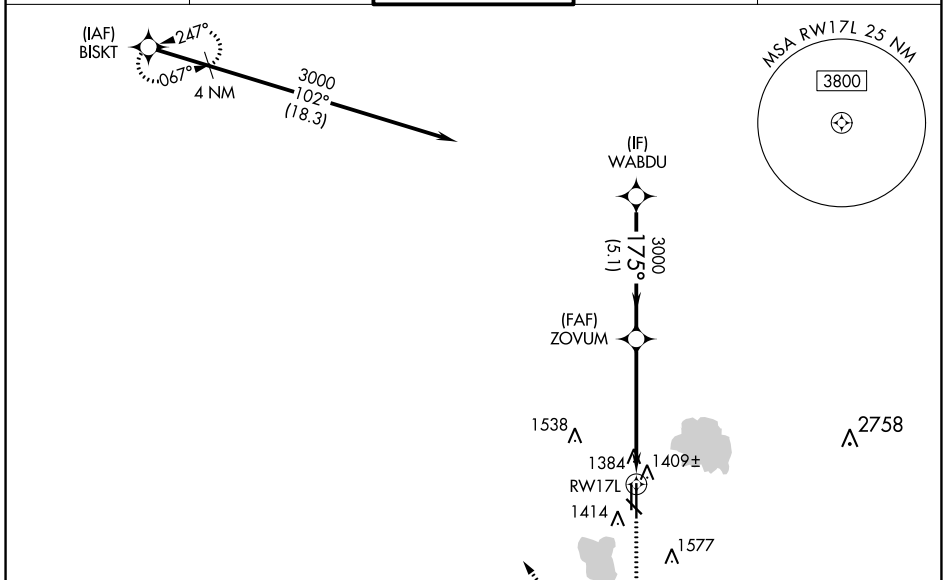
WAAS CH 72737 W17A	APP CRS 175°	Rwy ldg TDZE Apt Elev	6844 1291 1300
--	------------------------	-----------------------------	---

RNAV (GPS) RWY 17L

WILEY POST (PWA)

RNP APCH-GPS.		MALSR	MISSED APPROACH: Climb to 1700 then climbing right turn to 3400 direct BISKT and hold.	
<p>For uncompensated Baro-VNAV systems, LNAV/VNAV NA below -13°C or above 54°C. For inop ALS, increase LNAV/VNAV all Cats visibility to 7/8 SM and LNAV Cat C/D visibility to 1 SM.</p>				

ATIS 128.725	OKE CITY APP CON 124.6 266.8	WILEY POST TOWER ★ 126.9 (CTAF) 306.9	GND CON 121.7	UNICOM 122.95
------------------------	--	---	-------------------------	-------------------------



CATEGORY	A	B	C	D
LPV DA		1491-1/2	200 (200-1/2)	
LNAV/VNAV DA		1590-1/2	299 (300-1/2)	
LNAV MDA	1660-1/2	369 (400-1/2)	1660-5/8	369 (400-5/8)
CIRCLING	1780-1	480 (500-1)	1880-1 1/2	1880-2
			580 (600-1 1/2)	580 (600-2)

SC-1, 22 FEB 2024 to 21 MAR 2024

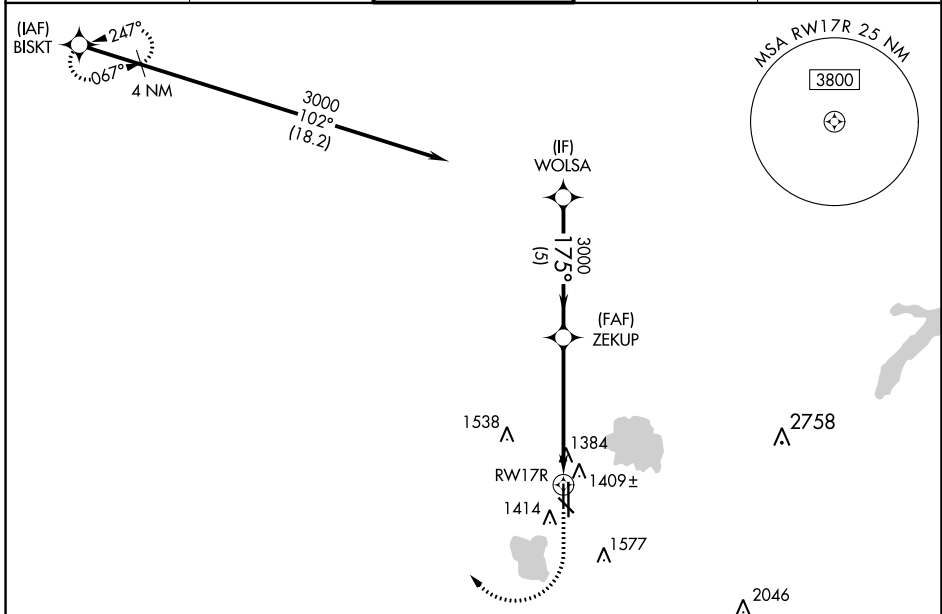
SC-1, 22 FEB 2024 to 21 MAR 2024

APP CRS	Rwy Idg	5002
175°	TDZE	1283
	Apt Elev	1300

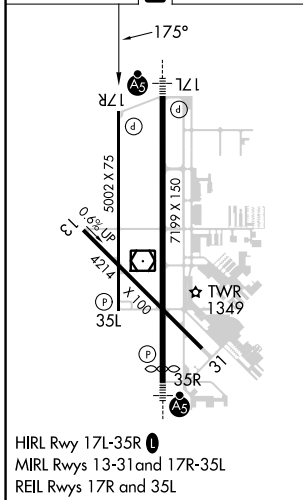
RNAV (GPS) RWY 17R

WILEY POST (PWA)

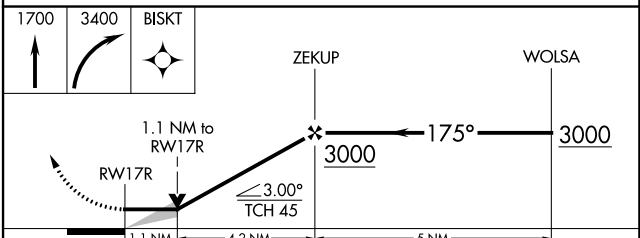
RNP APCH-GPS.		MISSED APPROACH: Climb to 1700 then climbing right turn to 3400 direct BISKT and hold.		
ATIS	OKE CITY APP CON	WILEY POST TOWER ★	GND CON	UNICOM
128.725	124.6 266.8	126.9 (CTAF) 306.9	121.7	122.95



ELEV	1300	D	TDZE	1283
------	------	----------	------	------



HIRL Rwy 17L-35R
 MIRL Rwy 13-31 and 17R-35L
 REIL Rwy 17R and 35L



CATEGORY	A	B	C	D
LNNAV MDA	1660-1 377 (400-1)			
C CIRCLING	1780-1	480 (500-1)	1880-1½ 580 (600-1½)	1880-2 580 (600-2)

SC-1, 22 FEB 2024 to 21 MAR 2024

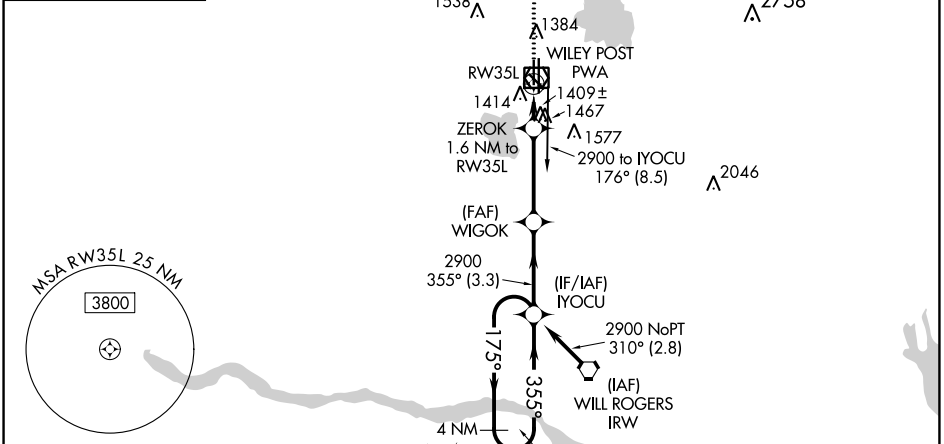
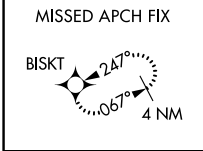
SC-1, 22 FEB 2024 to 21 MAR 2024

WAAS CH 78437 W35B	APP CRS 355°	Rwy ldg TDZE Apt Elev	5001 1277 1300
--	------------------------	-----------------------------	---

RNAV (GPS) RWY 35L

WILEY POST (PWA)

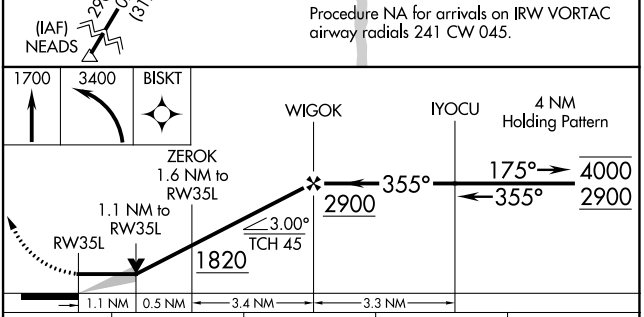
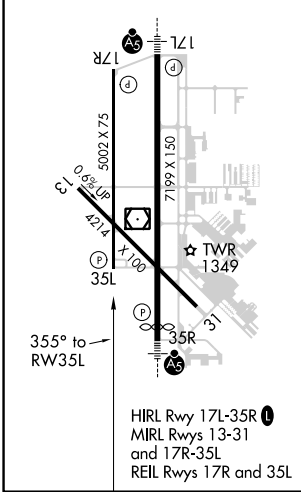
RNP APCH-GPS.		MISSED APPROACH: Climb to 1700 then climbing left turn to 3400 direct BISKT and hold.		
ATIS 128.725	OKE CITY APP CON 124.6 266.8	WILEY POST TOWER ★ 126.9(CTAF) 306.9	GND CON 121.7	UNICOM 122.95



SC-1, 22 FEB 2024 to 21 MAR 2024

SC-1, 22 FEB 2024 to 21 MAR 2024

ELEV 1300	D	TDZE 1277
-----------	----------	-----------



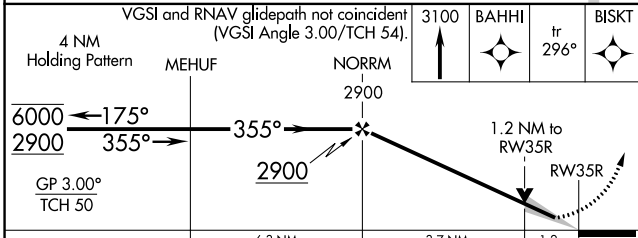
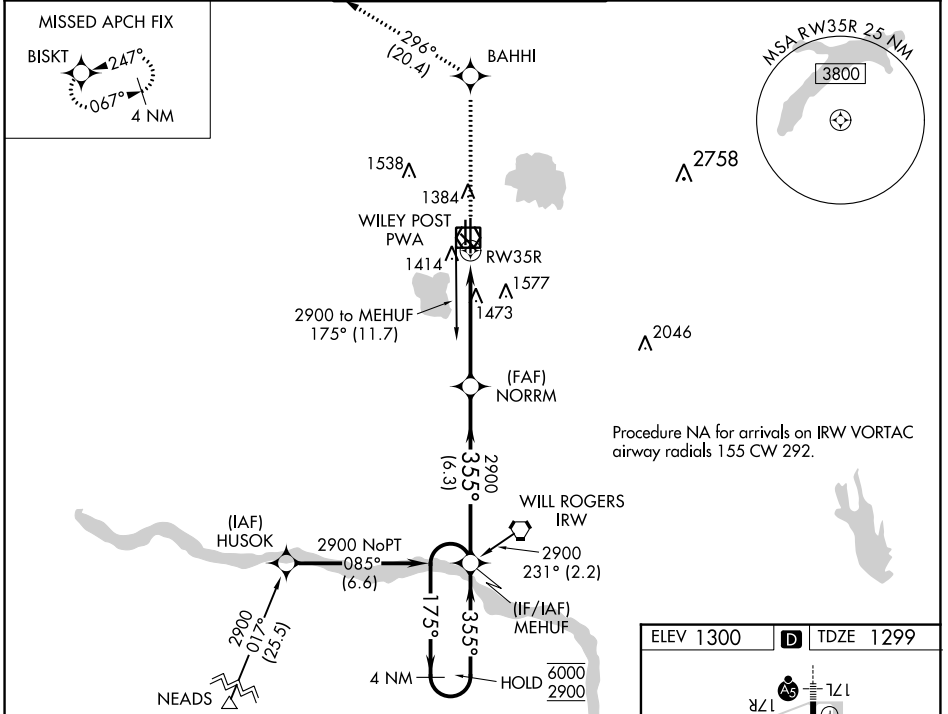
CATEGORY	A	B	C	D
LP MDA	1660-1	383 (400-1)	1660-1½	383 (400-1½)
LNAV MDA	1720-1	443 (500-1)	1720-1¾	443 (500-1¾)
C CIRCLING	1780-1	480 (500-1)	1880-1½ 580 (600-1½)	1880-2 580 (600-2)

WAAS CH 42716 W35A	APP CRS 355°	Rwy Idg 6844 TDZE 1299 Apt Elev 1300
--	------------------------	---

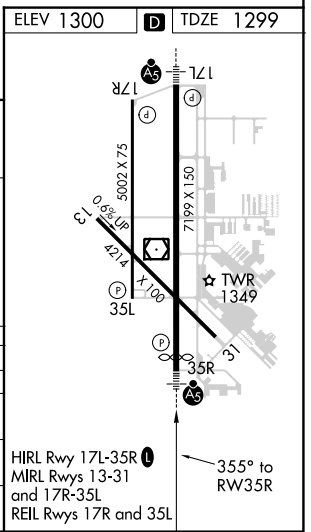
RNAV (GPS) RWY 35R

WILEY POST (PWA)

RNP APCH-GPS.		WILEY POST TOWER ★		GND CON		UNICOM	
MISSED APCH FIX BISKT \nearrow 247° \searrow 067° 4 NM		ATIS 128.725		OKE CITY APP CON 124.6 266.8		WILEY POST TOWER ★ 126.9 (CTAF) 306.9	
MALSR 		MISSED APPROACH: Climb to 3100 direct BAHHI and on track 296° to BISKI and hold.					
For uncompensated Baro-VNAV systems, LNAV/VNAV NA below -13°C or above 54°C. ASR							



CATEGORY		A	B	C	D
LPV	DA	1499-1/2		200 (200-1/2)	
LNAV/VNAV	DA	1755-7/8		456 (500-7/8)	
LNAV	MDA	1740-1/2 441 (500-1/2)		1740-7/8 441 (500-7/8)	
CIRCLING		1780-1 480 (500-1)	1880-1 580 (600-1 1/2)	1880-2 580 (600-2)	



SC-1, 22 FEB 2024 to 21 MAR 2024

SC-1, 22 FEB 2024 to 21 MAR 2024

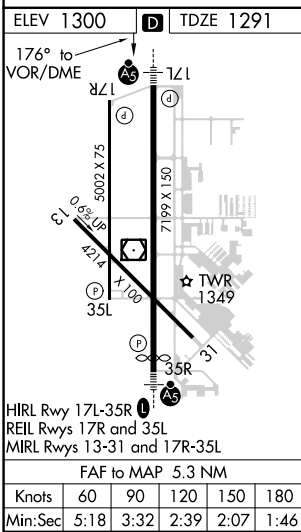
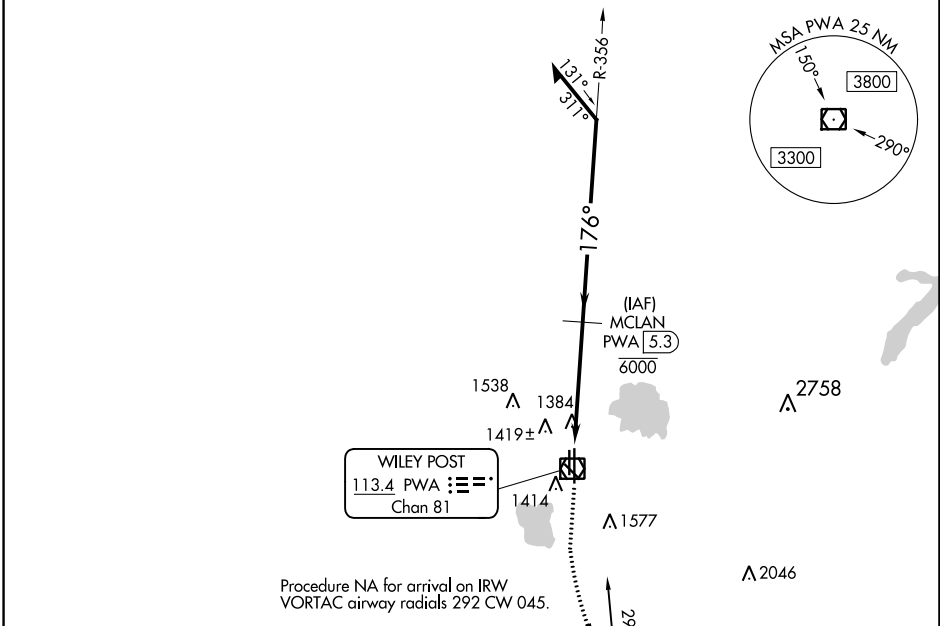
VOR/DME PWA 113.4 Chan 81	APP CRS 176°	Rwy Idg TDZE Apt Elev	6844 1291 1300
---	------------------------	-----------------------------	---

VOR RWY 17L

WILEY POST (PWA)

DME required.		MALSR	MISSED APPROACH: Climb to 1700 then climbing left turn to 3000 direct IRW VORTAC and hold.
ASR			

ATIS 128.725	OKE CITY APP CON 124.6 266.8	WILEY POST TOWER★ 126.9(CTAF) 306.9	GND CON 121.7	UNICOM 122.95
------------------------	--	---	-------------------------	-------------------------



1700	3000	IRW	MCLAN PWA 5.3	Remain within 10 NM
			6000	356°
				2800
				176°
				2800
				176°
				3.00°
				TCH 54
				0.7 1.1 3.5 NM
CATEGORY	A	B	C	D
S-17L	1680-1/2	389 (400-1/2)	1680-5/8	389 (400-5/8)

SC-1, 22 FEB 2024 to 21 MAR 2024

SC-1, 22 FEB 2024 to 21 MAR 2024

OKLAHOMA CITY, OKLAHOMA

AL-739 (FAA)

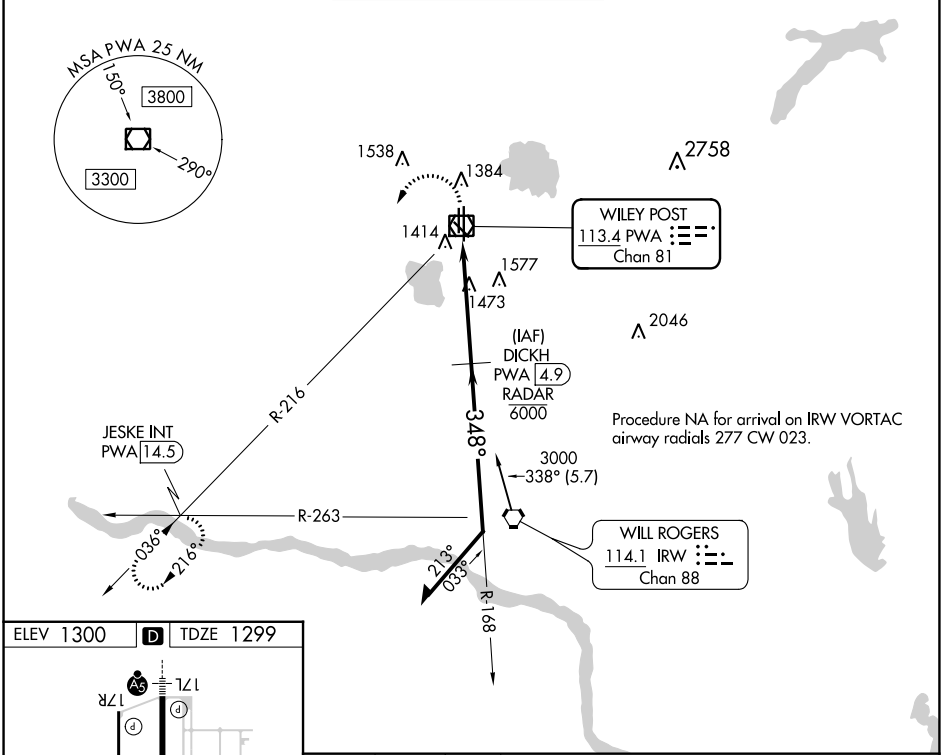
22251

VOR/DME PWA 113.4 Chan 81	APP CRS 348°	Rwy Idg TDZE Apt Elev 6843 1299 1300
---	------------------------	--

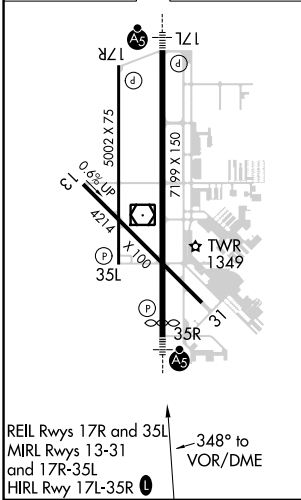
VOR RWY 35R

WILEY POST (PWA)

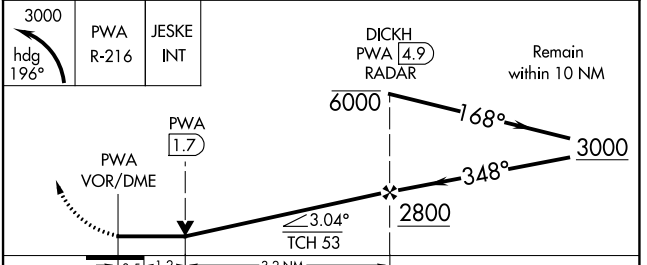
DME or RADAR required.		MALSR 	MISSED APPROACH: Climbing left turn to 3000 on heading 196° and PWA R-216 to JESKE INT/PWA 14.5 DME and hold.		
ATIS 128.725	OKE CITY APP CON 124.6 266.8	WILEY POST TOWER ★ 126.9 (CTAF) 306.9	GND CON 121.7	UNICOM 122.95	



ELEV 1300 TDZE 1299



REIL Rwy 17R and 35L
MIRL Rwy 13-31
and 17R-35L
HIRL Rwy 17L-35R
348° to VOR/DME



CATEGORY	A	B	C	D
S-35R	1740-1/2	441 (500-1/2)	1740-7/8	441 (500-7/8)
C CIRCLING	1780-1	480 (500-1)	1880-1 1/2 580 (600-1 1/2)	1880-2 580 (600-2)

OKLAHOMA CITY, OKLAHOMA
Amdt 4 24MAR22

35°32'N-97°39'W

WILEY POST (PWA)

VOR RWY 35R

SC-1, 22 FEB 2024 to 21 MAR 2024

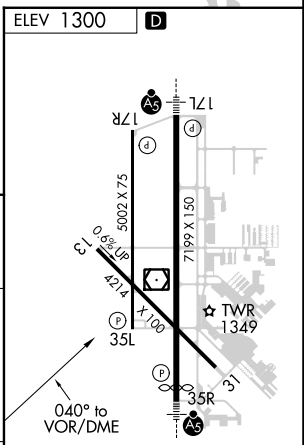
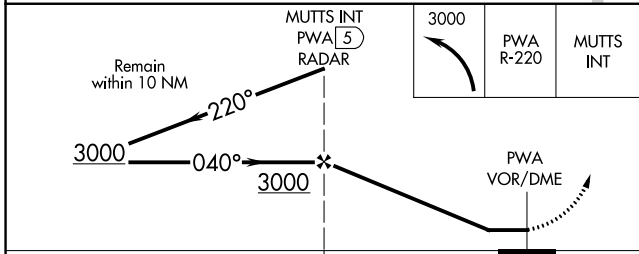
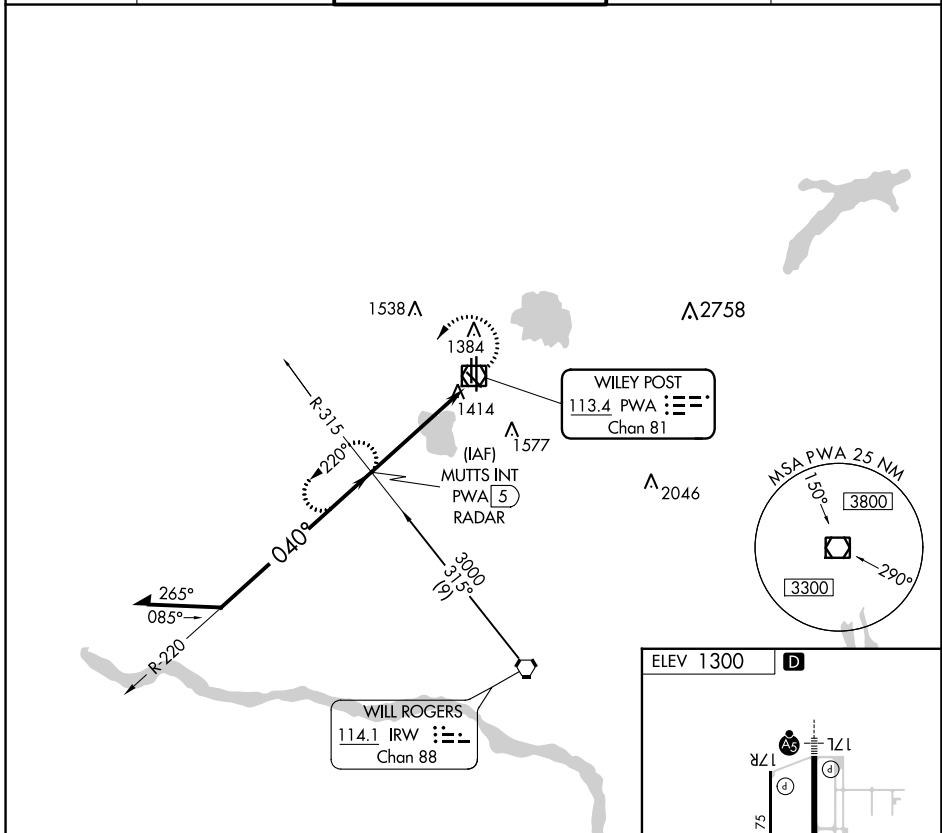
SC-1, 22 FEB 2024 to 21 MAR 2024

VOR/DME PWA 113.4 Chan 81	APP CRS 040°	Rwy Idg TDZE Apt Elev N/A N/A 1300
---	------------------------	--

VOR-A
WILEY POST (PWA)

ASR	MISSED APPROACH: Climbing left turn to 3000 via PWA VOR/DME R-220 to MUTTS Int and hold.			
------------	--	--	--	--

ATIS 128.725	OKE CITY APP CON 124.6 266.8	WILEY POST TOWER ★ 126.9 (CTAF) 306.9	GND CON 121.7	UNICOM 122.95
------------------------	--	---	-------------------------	-------------------------



CATEGORY	A	B	C	D
C CIRCLING	1780-1	480 (500-1)	1880-1½ 580 (600-1½)	1880-2 580 (600-2)

REIL Rwy 17R and 35L
MRL Rwy 13-31 and 17R-35L
HIRL Rwy 17L-35R

SC-1, 22 FEB 2024 to 21 MAR 2024

SC-1, 22 FEB 2024 to 21 MAR 2024