

WAAS CH 97521 W16A	APP CRS 167°	Rwy Idg TDZE 1948 Apt Elev 1948
--	------------------------	---

RNAV (GPS) RWY 16

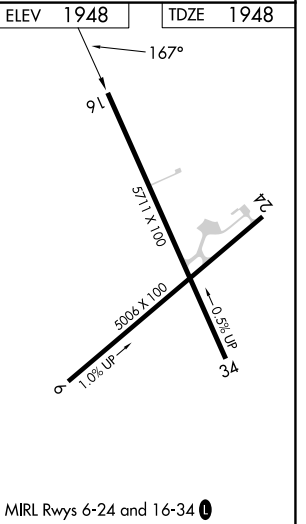
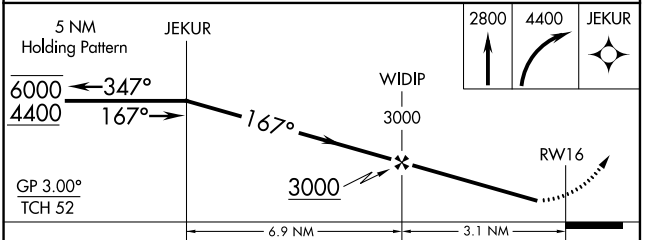
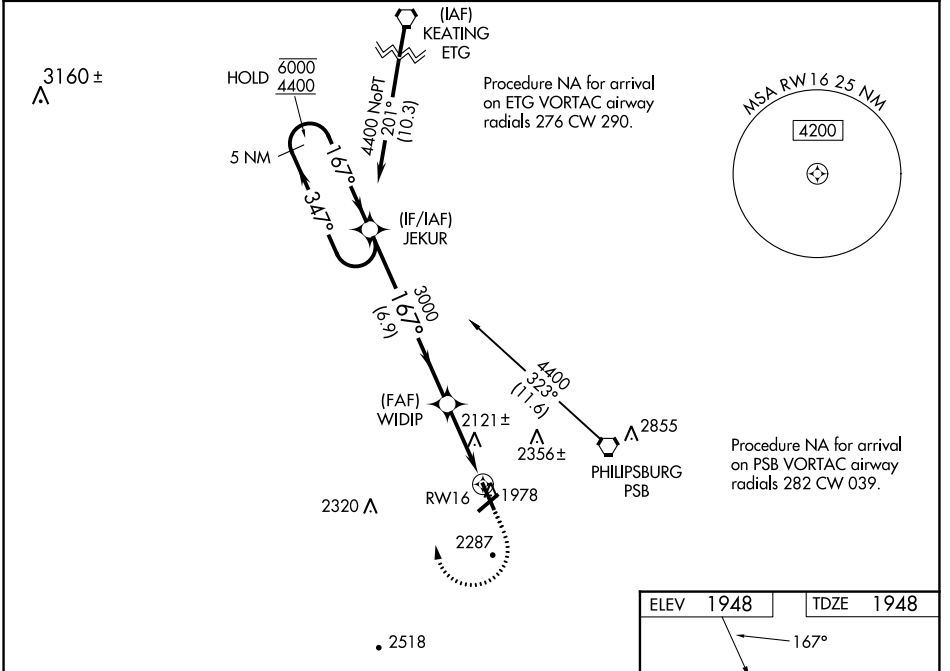
MID-STATE (PSB)

RNP APCH.

⚠ Rwy 16 helicopter visibility reduction below 1 SM NA. Baro-VNAV NA.
⚠ NA Straight-in Rwy 16 NA at night, Circling Rwy 16, 24, NA at night.
 Use State College altimeter setting, when not received use Clearfield altimeter setting. Circling NA for Cat D east of Rwy 16-34.

MISSED APPROACH: Climb to 2800 then climbing right turn to 4400 direct JEKUR and hold.

AWOS-3 127.525	UNV AWOS-3 127.65	NEW YORK CENTER 134.8 338.3	CTAF 122.9
--------------------------	-----------------------------	---------------------------------------	----------------------



CATEGORY	A	B	C	D
LPV DA	2323-1 375 (400-1)			
LNAV/VNAV DA	2332-1½ 384 (400-1½)			
LNAV MDA	2520-1	572 (600-1)	2520-1½	572 (600-1½)
CIRCLING	2680-1 732 (800-1)	2840-1¼ 892 (900-1¼)	2880-2¾ 932 (1000-2¾)	3000-3 1052 (1100-3)

NE-4, 22 FEB 2024 to 21 MAR 2024

NE-4, 22 FEB 2024 to 21 MAR 2024

VORTAC PSB 115.5 Chan 102	APP CRS 256°	Rwy Idg TDZE Apt Elev	5006 1917 1948
---	------------------------	-----------------------------	---

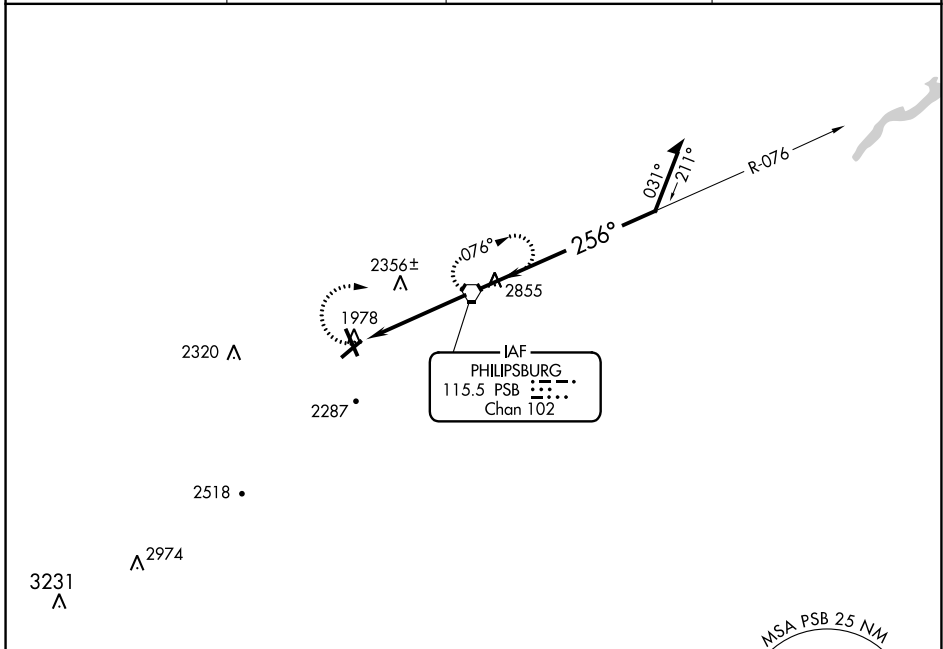
VOR RWY 24

MID-STATE (PSB)

⚠ NA When University Park altimeter setting not received use Clearfield altimeter.
⚠ NA Procedure NA at night.
 Rwy 24 helicopter visibility reduction below 1 SM NA.

MISSED APPROACH: Climbing right turn to 4000 direct PSB VORTAC and hold.

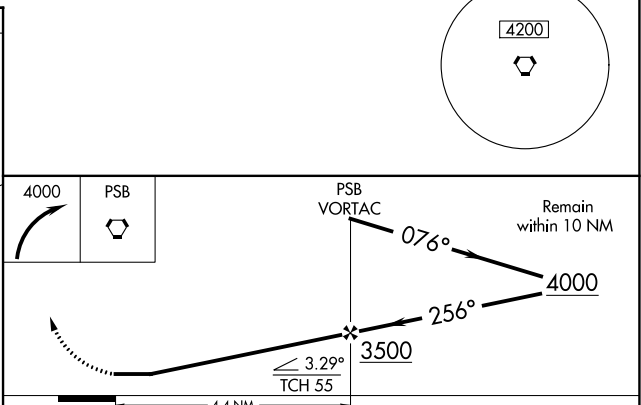
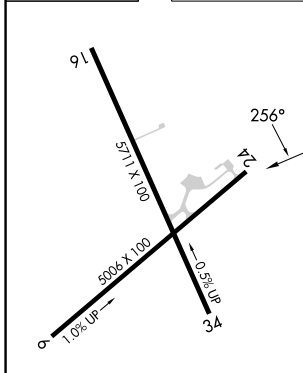
AWOS-3 127.525	UNV AWOS-3 127.65	NEW YORK CENTER 134.8 338.3	CTAF 122.9
--------------------------	-----------------------------	---------------------------------------	----------------------



NE-4, 22 FEB 2024 to 21 MAR 2024

NE-4, 22 FEB 2024 to 21 MAR 2024

ELEV 1948	TDZE 1917
-----------	-----------



MIRL Rwys 6-24 and 16-34

FAF to MAP 4.4 NM

Knots	60	90	120	150	180
Min:Sec	4:24	2:56	2:12	1:46	1:28

CATEGORY	A	B	C	D
S-24	3040-1¼ 1123 (1100-1¼)	3040-1½ 1123 (1100-1½)	3040-3	1123 (1100-3)
<input checked="" type="checkbox"/> CIRCLING	3040-1¼ 1092 (1100-1¼)	3040-1½ 1092 (1100-1½)	3040-3	1092 (1100-3)