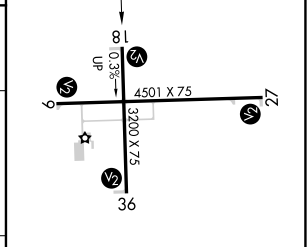
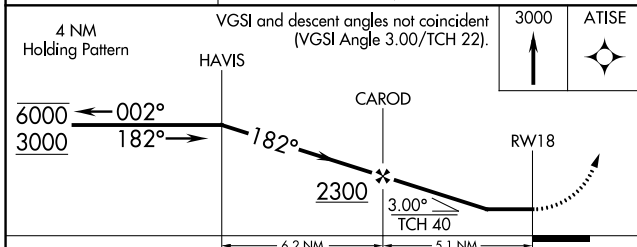
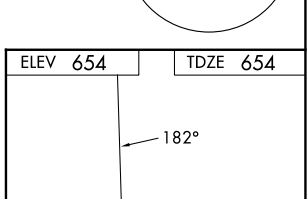
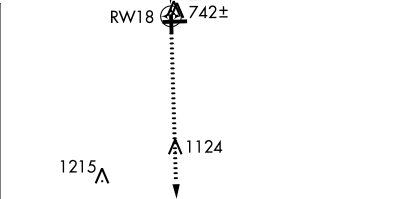
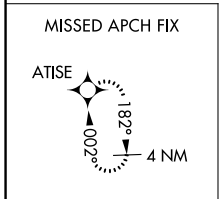
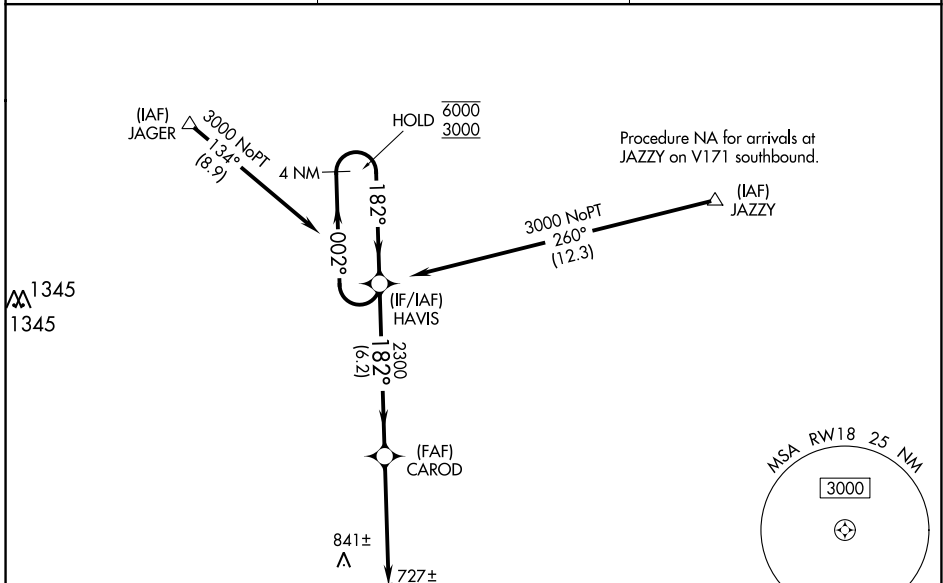


WAAS CH <b>82639</b> <b>W18A</b>	APP CRS <b>182°</b>	Rwy Idg TDZE Apt Elev	<b>3200</b> <b>654</b> <b>654</b>
--	------------------------	-----------------------------	---

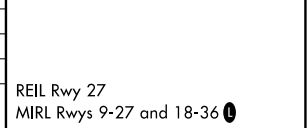
# RNAV (GPS) RWY 18

EDGAR COUNTY (PRG)

RNP APCH.		MISSED APPROACH: Climb to 3000 direct ATISE and hold.
	Rwy 18 helicopter visibility reduction below 1 SM NA. Straight-in Rwy 18 NA at night.	
AWOS-3 <b>124.175</b>	HULMAN APP CON <b>125.45 339.8</b>	UNICOM <b>123.0 (CTAF) 1</b>



CATEGORY	A	B	C	D
LP MDA		980-1	326 (400-1)	
LNAV MDA		1000-1	346 (400-1)	
CIRCLING	1080-1 426 (500-1)	1120-1 466 (500-1)	1200-1½ 546 (600-1½)	1320-2 666 (700-2)



EC-3, 22 FEB 2024 to 21 MAR 2024

EC-3, 22 FEB 2024 to 21 MAR 2024

REIL Rwy 27  
MIRL Rwy 9-27 and 18-36 1

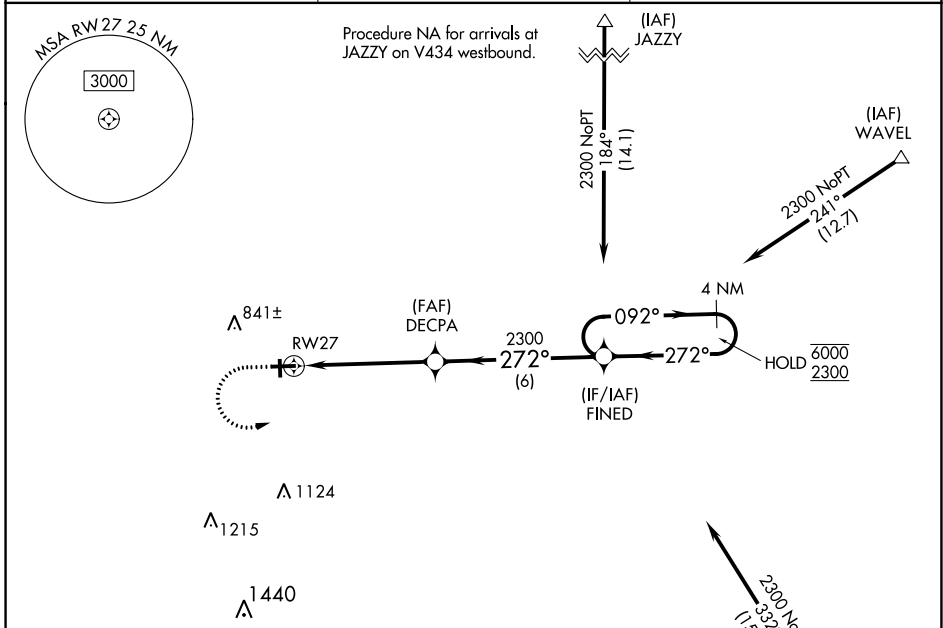
WAAS CH <b>61239</b> <b>W27A</b>	APP CRS <b>272°</b>	Rwy Idg TDZE Apt Elev	<b>4501</b> <b>651</b> <b>654</b>
--	------------------------	-----------------------------	---

# RNAV (GPS) RWY 27

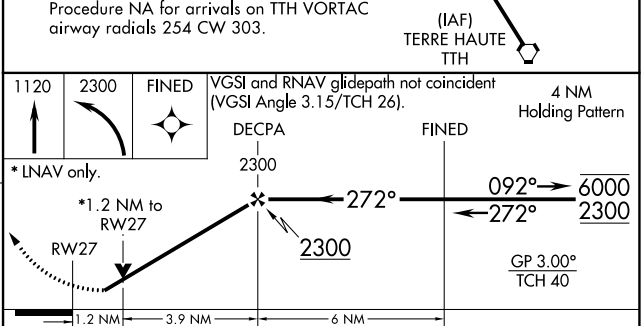
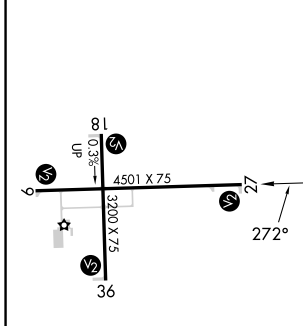
EDGAR COUNTY (PRG)

RNP APCH.	MISSED APPROACH: Climb to 1120 then climbing left turn to 2300 direct FINED and hold.
<b>⚠</b> Circling Rwy 18 NA at night. Rwy 27 helicopter visibility reduction below 3/4 SM NA. For uncompensated Baro-VNAV systems, LNAV/VNAV NA below -16°C or above 54°C.	

AWOS-3 <b>124.175</b>	HULMAN APP CON <b>125.45 339.8</b>	UNICOM <b>123.0 (CTAF) 0</b>
--------------------------	---------------------------------------	---------------------------------



ELEV <b>654</b>	TDZE <b>651</b>
-----------------	-----------------



REIL Rwy 27 MIRL Rwy 9-27 and 18-36	<table border="1"> <tr> <td>CATEGORY</td> <td>A</td> <td>B</td> <td>C</td> <td>D</td> </tr> <tr> <td>LPV DA</td> <td colspan="4">901-1 250 (300-1)</td> </tr> <tr> <td>LNAV/VNAV DA</td> <td colspan="4">925-1 274 (300-1)</td> </tr> <tr> <td>LNAV MDA</td> <td>1080-1 429 (500-1)</td> <td colspan="2">1080-1¼ 429 (500-1¼)</td> <td></td> </tr> <tr> <td><b>C</b> CIRCLING</td> <td>1080-1 426 (500-1)</td> <td>1120-1 466 (500-1)</td> <td>1200-1½ 546 (600-1½)</td> <td>1320-2 666 (700-2)</td> </tr> </table>				CATEGORY	A	B	C	D	LPV DA	901-1 250 (300-1)				LNAV/VNAV DA	925-1 274 (300-1)				LNAV MDA	1080-1 429 (500-1)	1080-1¼ 429 (500-1¼)			<b>C</b> CIRCLING	1080-1 426 (500-1)	1120-1 466 (500-1)	1200-1½ 546 (600-1½)	1320-2 666 (700-2)
CATEGORY	A	B	C	D																									
LPV DA	901-1 250 (300-1)																												
LNAV/VNAV DA	925-1 274 (300-1)																												
LNAV MDA	1080-1 429 (500-1)	1080-1¼ 429 (500-1¼)																											
<b>C</b> CIRCLING	1080-1 426 (500-1)	1120-1 466 (500-1)	1200-1½ 546 (600-1½)	1320-2 666 (700-2)																									

EC-3, 22 FEB 2024 to 21 MAR 2024

EC-3, 22 FEB 2024 to 21 MAR 2024

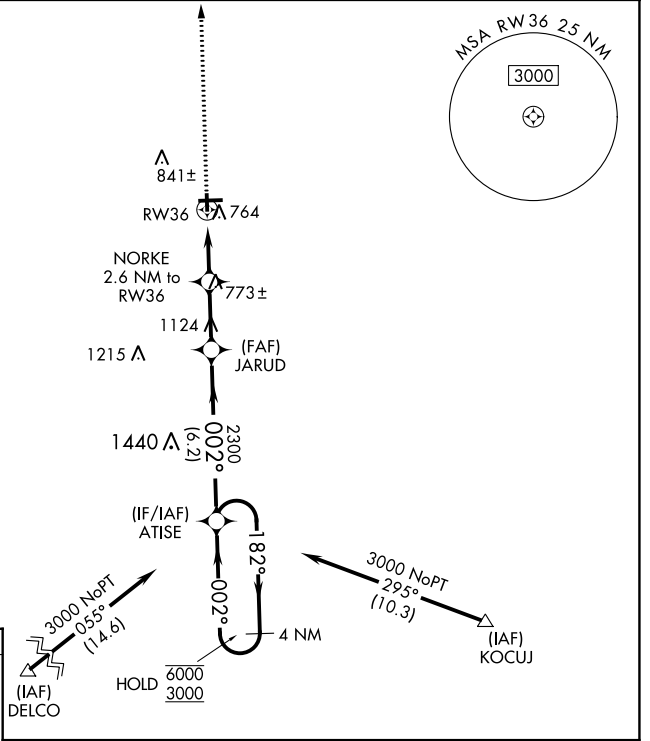
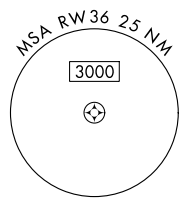
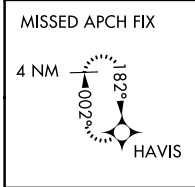
WAAS CH <b>78339</b> <b>W36A</b>	APP CRS <b>002°</b>	Rwy Idg TDZE <b>3200</b> <b>654</b> Apt Elev <b>654</b>
--	------------------------	--

# RNAV (GPS) RWY 36

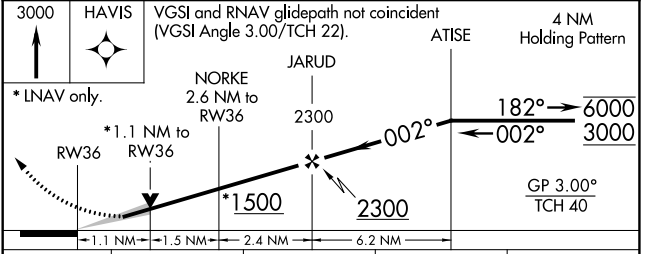
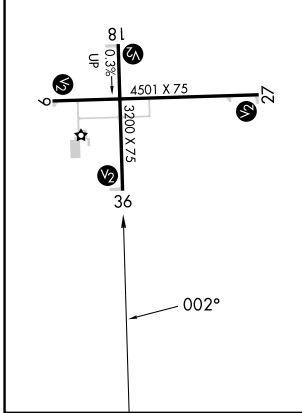
EDGAR COUNTY (PRG)

RNP APCH.	MISSED APPROACH: Climb to 3000 direct HAVIS and hold.
<p><b>⚠</b> For uncompensated Baro-VNAV systems, procedure NA below -16°C or above 54°C.  <b>⚠</b> Circling Rwy 18 NA at night.</p>	

AWOS-3 <b>124.175</b>	HULMAN APP CON <b>125.45 339.8</b>	UNICOM <b>123.0 (CTAF)</b>
--------------------------	---------------------------------------	-------------------------------



ELEV 654	TDZE 654
REIL Rwy 27 MIRL Rwys 9-27 and 18-36	



CATEGORY	A	B	C	D
LPV DA	904-1 250 (300-1)			
LNAV/VNAV DA	925-1 271 (300-1)			
LNAV MDA	1020-1 366 (400-1)			
CIRCLING	1080-1	1120-1	1200-1½	1320-2
	426 (500-1)	466 (500-1)	546 (600-1½)	666 (700-2)

EC-3, 22 FEB 2024 to 21 MAR 2024

EC-3, 22 FEB 2024 to 21 MAR 2024

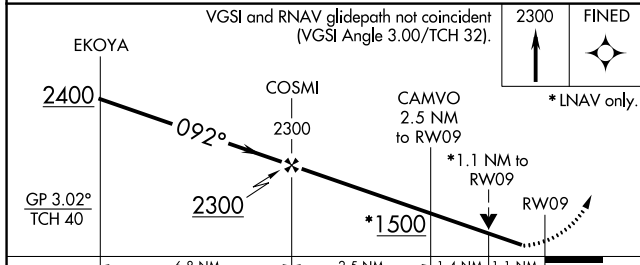
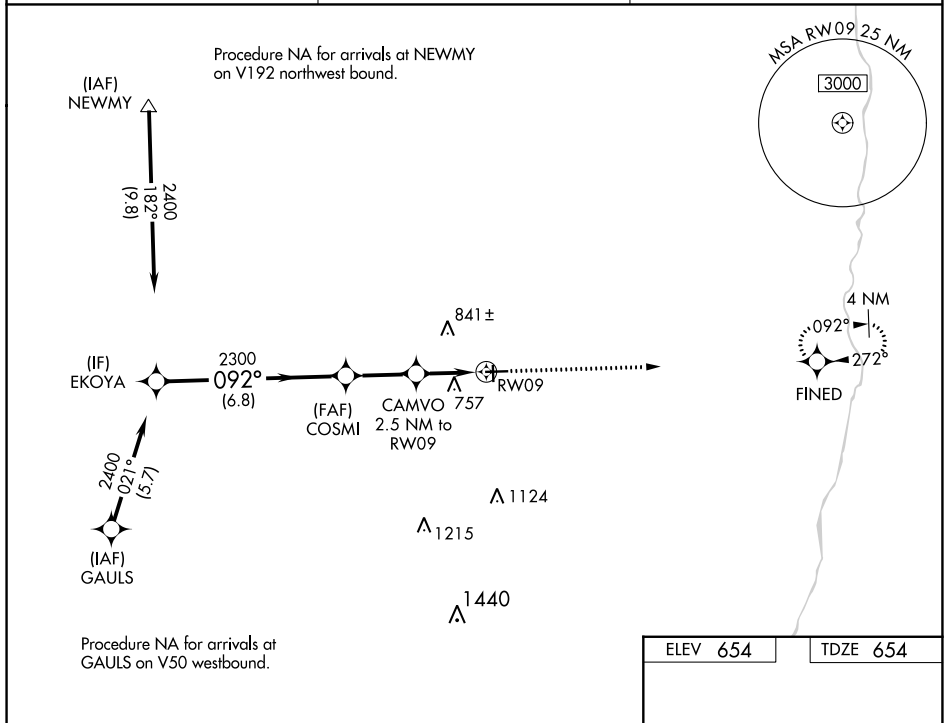
WAAS CH <b>50439</b> <b>W09A</b>	APP CRS <b>092°</b>	Rwy Idg TDZE <b>654</b> Apt Elev <b>654</b>
--	------------------------	---

# RNAV (GPS) RWY 9

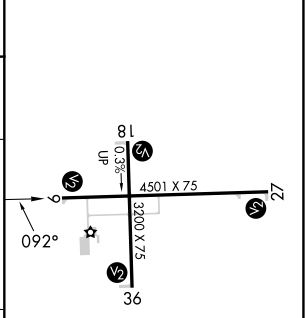
EDGAR COUNTY (PRG)

RNP APCH.	MISSED APPROACH: Climb to 2300 direct FINED and hold.
-----------	---

AWOS-3 <b>124.175</b>	HULMAN APP CON <b>125.45 339.8</b>	UNICOM <b>123.0 (CTAF) 0</b>
--------------------------	---------------------------------------	---------------------------------



ELEV 654	TDZE 654
----------	----------



CATEGORY	A	B	C	D
LPV DA	904-1 250 (300-1)			
LNAV/VNAV DA	908-1 254 (300-1)			
LNAV MDA	1020-1 366 (400-1)			
<b>C</b> CIRCLING	1080-1 426 (500-1)	1120-1 466 (500-1)	1200-1½ 546 (600-1½)	1320-2 666 (700-2)

REIL Rwy 27

MIRL Rwy 9-27 and 18-36  $\bullet$

EC-3, 22 FEB 2024 to 21 MAR 2024

EC-3, 22 FEB 2024 to 21 MAR 2024