

WAAS CH <b>49035</b> <b>W27A</b>	APP CRS <b>273°</b>	Rwy Idg TDZE <b>1198</b> Apt Elev <b>1198</b>	<b>3499</b>
--	------------------------	---	-------------

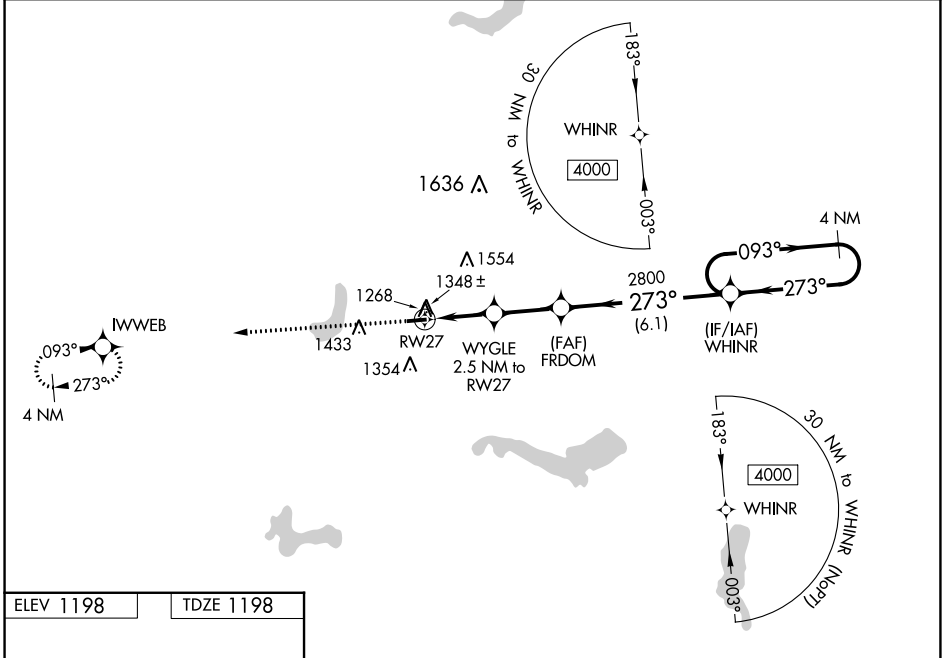
# RNAV (GPS) RWY 27

PORTAGE COUNTY (POV)

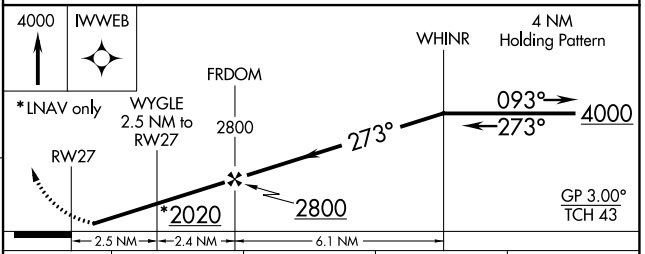
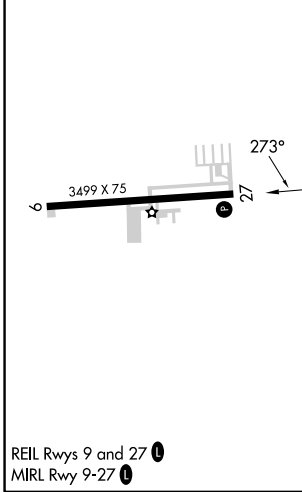
**⚠** Baro-VNAV NA when using Akron-Canton Rgnl altimeter setting. For uncompensated Baro-VNAV systems, LNAV/VNAV NA below -17°C (2°F) or above 54°C (130°F). DME/DME RNP-0.3 NA.  
**⚠** When local altimeter setting not received, use Akron-Canton Rgnl altimeter setting and increase all DA 50 feet and all MDA 60 feet; increase LPV all Cats visibility 1/8 mile, LNAV/VNAV all Cats visibility 1/4 mile and Circling Cat C visibility 1/4 mile. Helicopter visibility reduction below 1 SM NA. Night landing Cat C: Procedure NA.

**MISSED APPROACH:**  
Climb to 4000 direct IWWEB and hold.

AWOS-3 <b>118.675</b>	CLEVELAND APP CON* <b>125.5 371.875</b>	CLNC DEL <b>125.65</b>	UNICOM <b>123.05 (CTAF) 1</b>
--------------------------	--	---------------------------	----------------------------------



ELEV 1198	TDZE 1198
-----------	-----------



CATEGORY	A	B	C	D
LPV DA	1471-1 273 (300-1)			NA
LNAV/VNAV DA	1546-1 1/8 348 (400-1 1/8)			NA
LNAV MDA	1640-1 442 (500-1)	1640-1 3/8 442 (500-1 3/8)		NA
<b>C</b> CIRCLING	1740-1 542 (600-1)	1800-1 602 (700-1)	1920-2 722 (800-2)	NA

REIL Rwy 9 and 27 **1**  
MIRL Rwy 9-27 **1**

EC-2, 22 FEB 2024 to 21 MAR 2024

EC-2, 22 FEB 2024 to 21 MAR 2024

WAAS CH <b>77735</b> <b>W09A</b>	APP CRS <b>093°</b>	Rwy Idg TDZE Apt Elev	<b>3499</b> <b>1198</b> <b>1198</b>
--	------------------------	-----------------------------	---

# RNAV (GPS) RWY 9

PORTAGE COUNTY (POV)

**▽** For uncompensated Baro-VNAV systems, LNAV/VNAV NA below -17°C (2°F) or above 54°C (130°F). DME/DME RNP-0.3 NA. When local altimeter setting not received, use Akron-Canton Rgnl altimeter setting and increase all DA 50 feet and all MDA 60 feet, increase LNAV Cat C visibility 1/8 mile, LNAV/VNAV all Cats and Circling Cat C visibility 1/4 mile. Baro-VNAV NA with Akron-Canton Rgnl altimeter setting. Helicopter visibility reduction below 1 SM NA. Night landing Cat C: Procedure NA.

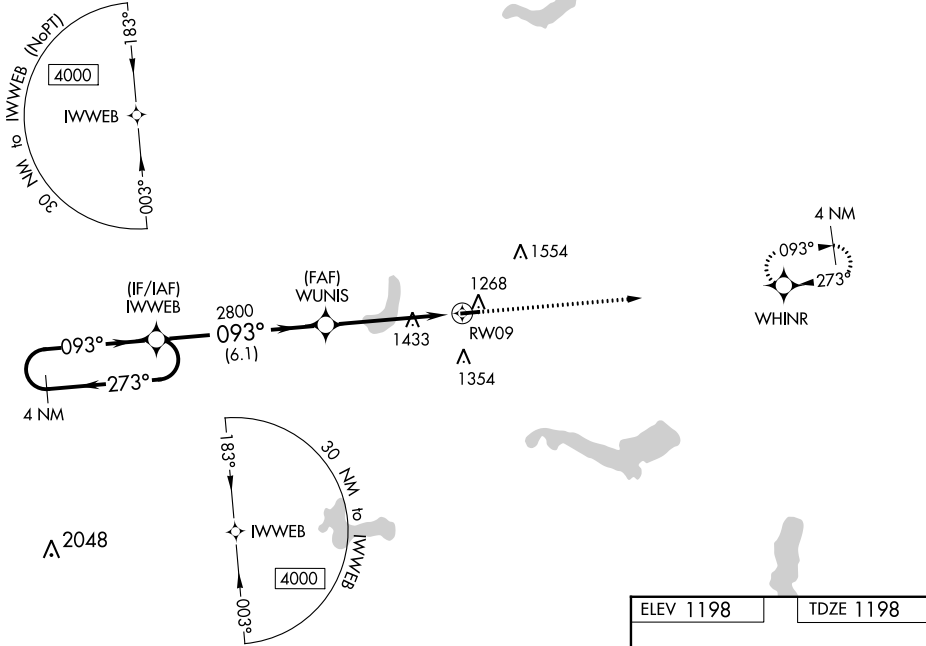
MISSED APPROACH: Climb to 4000 direct WHINR and hold.

AWOS-3  
**118.675**

CLEVELAND APP CON\*  
**125.5 371.875**

CLNC DEL  
**125.65**

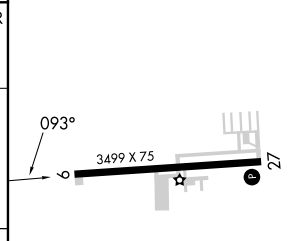
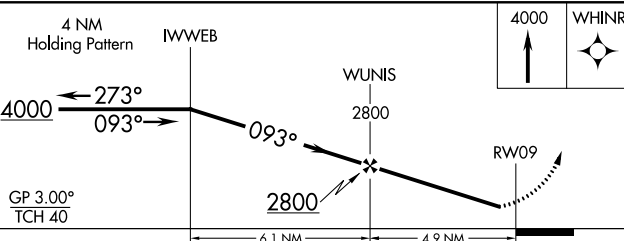
UNICOM  
**123.05** (CTAF) **0**



EC-2, 22 FEB 2024 to 21 MAR 2024

EC-2, 22 FEB 2024 to 21 MAR 2024

ELEV 1198	TDZE 1198
-----------	-----------



CATEGORY	A	B	C	D
LPV DA	1448-1	250 (300-1)		NA
LNAV/VNAV DA	1507-1	309 (400-1)		NA
LNAV MDA	1760-1	562 (600-1)	1760-1 5/8 562 (600-1 5/8)	NA
<b>C</b> CIRCLING	1760-1 562 (600-1)	1800-1 602 (700-1)	1920-2 722 (800-2)	NA

REIL Rwys 9 and 27 **0**  
MRL Rwy 9-27 **0**

RAVENNA, OHIO

AL-5844 (FAA)

24025

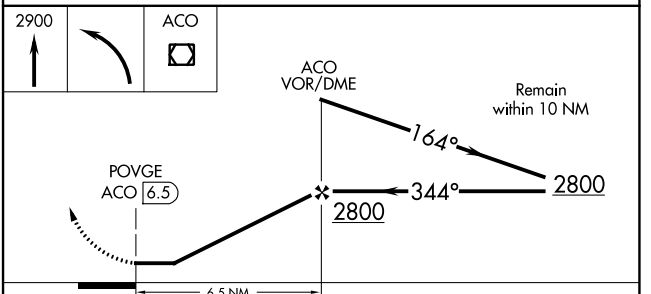
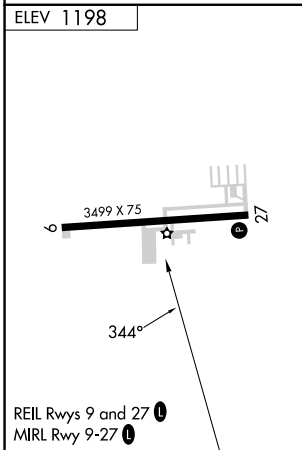
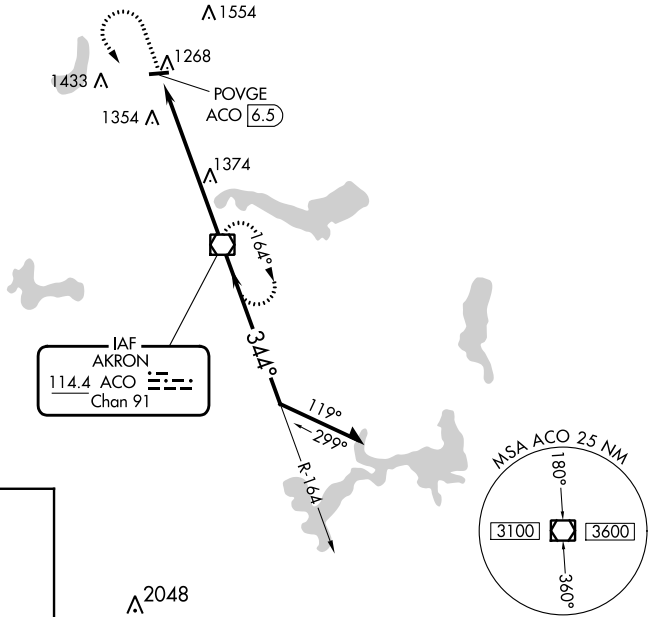
VOR/DME ACO <b>114.4</b> Chan <b>91</b>	APP CRS <b>344°</b>	Rwy Idg TDZE Apt Elev	<b>N/A</b> <b>N/A</b> <b>1198</b>
---	------------------------	-----------------------------	---

**VOR-A**  
PORTAGE COUNTY (POV)

**⚠** When local altimeter setting not received, use Akron-Canton Rgnl altimeter setting and increase all MDA 60 feet.  
**⚠** Circling Cat C NA at night.

**MISSED APPROACH:** Climb to 2900 then left turn direct ACO VOR/DME and hold.

AWOS-3 <b>118.675</b>	CLEVELAND APP CON★ <b>125.5 371.875</b>	CLNC DEL <b>125.65</b>	UNICOM <b>123.05</b> (CTAF) <b>📞</b>
--------------------------	--	---------------------------	---



FAF to MAP 6.5 NM					CATEGORY	A	B	C	D
Knots	60	90	120	150	180	1740-1	1800-1	1920-2	NA
Min:Sec	6:30	4:20	3:15	2:36	2:10	542 (600-1)	602 (700-1)	722 (800-2)	

RAVENNA, OHIO  
Amdt 6B 30JAN20

41°13'N - 81°15'W

PORTAGE COUNTY (POV)  
**VOR-A**

EC-2, 22 FEB 2024 to 21 MAR 2024

EC-2, 22 FEB 2024 to 21 MAR 2024