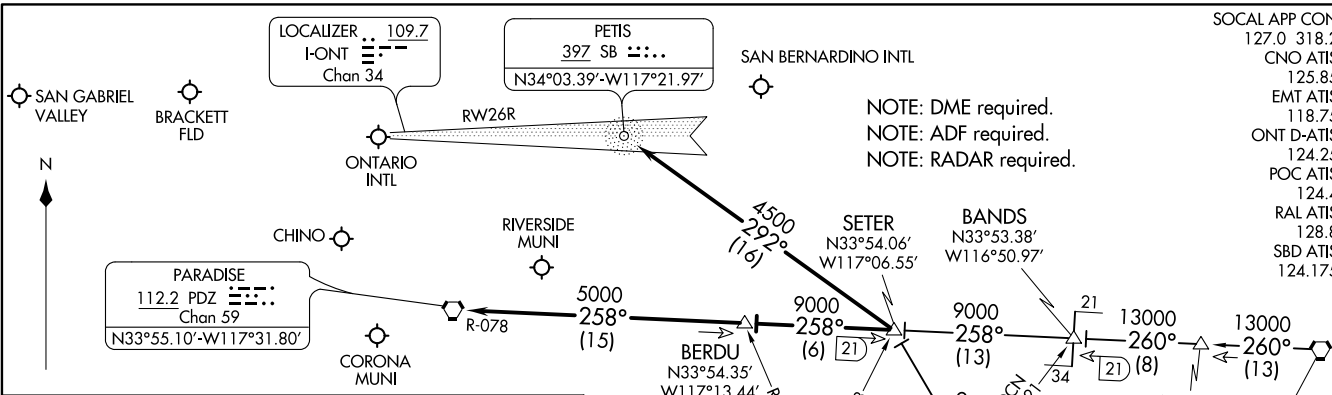


SETER FIVE ARRIVAL  
(SETER:SETER5) 17AUG17

SETER FIVE ARRIVAL  
(SETER:SETER5) 21112



**ARRIVAL ROUTE DESCRIPTION**

**JULIAN TRANSITION (JLI:SETER5):** From over JLI VORTAC on JLI R-315 to SETER. Thence. . . .

**PALM SPRINGS TRANSITION (PSP:SETER5):** From over PSP VORTAC on PSP R-260 to BANDS, then on PDZ R-078 to SETER. Thence. . . .

**LANDING ONTARIO INTL**

**RUNWAYS 26L/R:** From over SETER on SB NDB 292° course to SB NDB; expect ILS approach.

**RUNWAYS 8L/R:** From over SETER on PDZ R-078 to BERDU, then on PDZ R-078 to PDZ VORTAC; expect vectors to final approach course.

**ALL OTHER AIRPORTS**

From over SETER via PDZ R-078 to BERDU, then on PDZ R-078 to PDZ VORTAC; expect vectors to final approach course.

**VERTICAL NAVIGATION PLANNING INFORMATION**  
Expect 12000

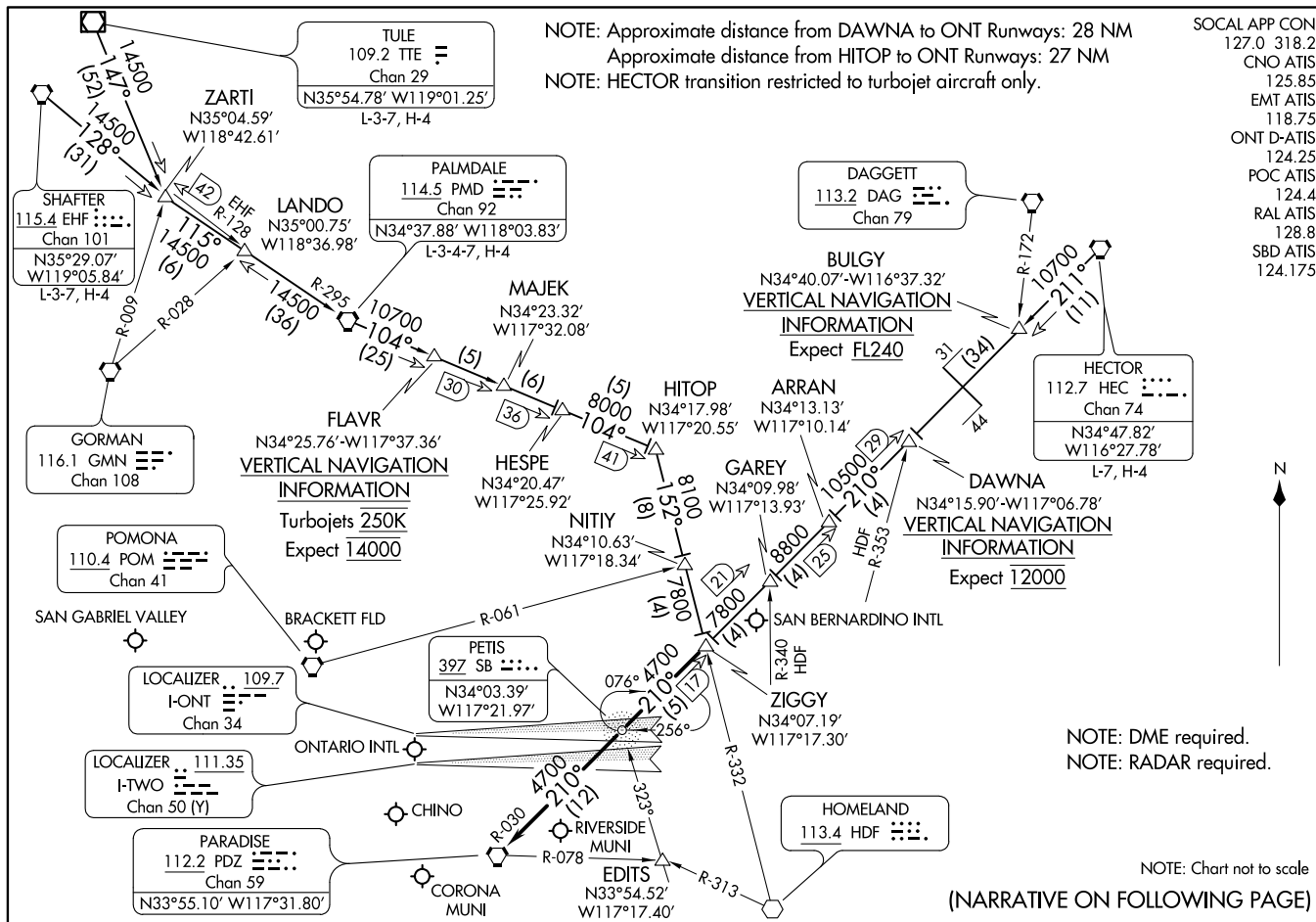
**VERTICAL NAVIGATION PLANNING INFORMATION**  
Expect 16000

**VERTICAL NAVIGATION PLANNING INFORMATION**  
Expect FL240

NOTE: Chart not to scale.

ONTARIO, CALIFORNIA

AL-965 (FAA) ONTARIO, CALIFORNIA



NOTE: Approximate distance from DAWNA to ONT Runways: 28 NM  
 Approximate distance from HITOP to ONT Runways: 27 NM  
 NOTE: HECTOR transition restricted to turbojet aircraft only.

SOCAL APP CON  
 127.0 318.2  
 CNO ATIS  
 125.85  
 EMT ATIS  
 118.75  
 ONT D-ATIS  
 124.25  
 POC ATIS  
 124.4  
 RAL ATIS  
 128.8  
 SBD ATIS  
 124.175

NOTE: DME required.  
 NOTE: RADAR required.

NOTE: Chart not to scale

(NARRATIVE ON FOLLOWING PAGE)

ARRIVAL ROUTE DESCRIPTION

HECTOR TRANSITION (HEC.ZIGGY7): From over HEC VORTAC on HEC R-211 and PDZ R-030 to ZIGGY. Thence . . . .

PALMDALE TRANSITION (PMD.ZIGGY7): From over PMD VORTAC on PMD R-104 to HITOP, then on HDF R-332 to ZIGGY. Thence . . . .

SHAFTER TRANSITION (EHF.ZIGGY7): From over EHF VORTAC on EHF R-128 and PMD R-295 to PMD VORTAC, then on PMD R-104 to HITOP, then on HDF R-332 to ZIGGY. Thence . . . .

TULE TRANSITION (TTE.ZIGGY7): From over TTE VOR/DME on TTE R-147 and PMD R-295 to PMD VORTAC, then on PMD R-104 to HITOP, then on HDF R-332 to ZIGGY. Thence . . . .

LANDING ONTARIO INTL

RUNWAYS 8L/R: From over ZIGGY on PDZ R-030 to PDZ VORTAC; expect RADAR vectors to final approach course.

RUNWAYS 26 L/R: From over ZIGGY direct PETIS NDB or on PDZ R-030 to PETIS; expect RADAR vectors for ILS approach.

ALL OTHER AIRPORTS

From over ZIGGY on PDZ R-030 to PDZ VORTAC; expect RADAR vectors to final approach course.

SW-3, 27 JAN 2022 to 24 FEB 2022

SW-3, 27 JAN 2022 to 24 FEB 2022