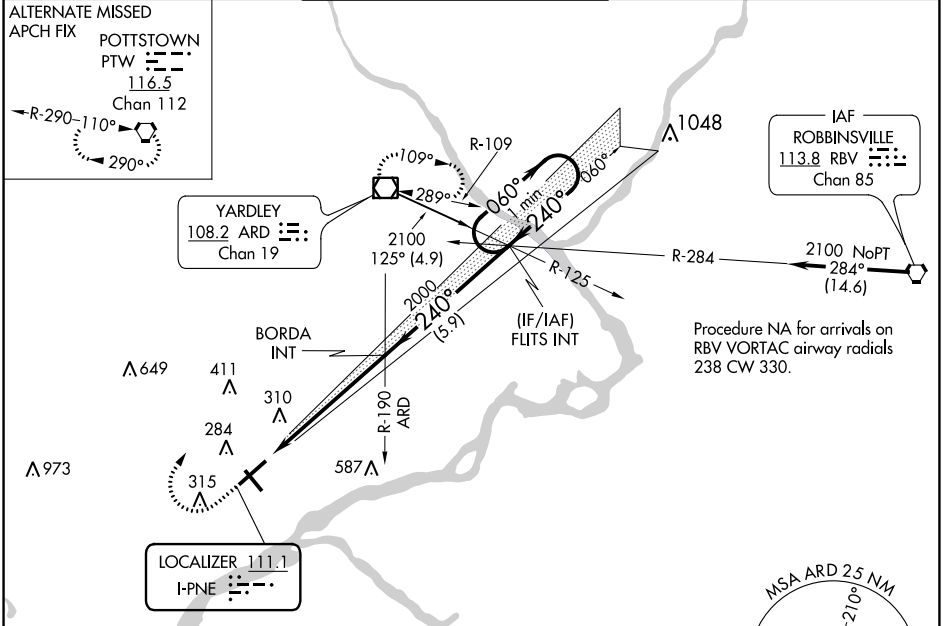


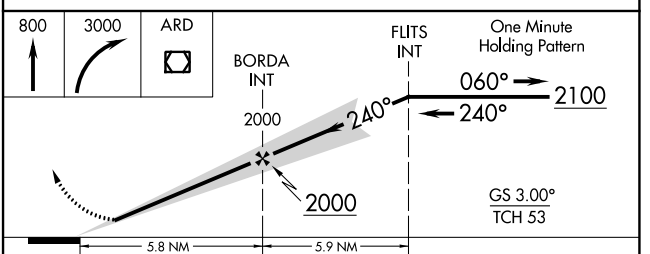
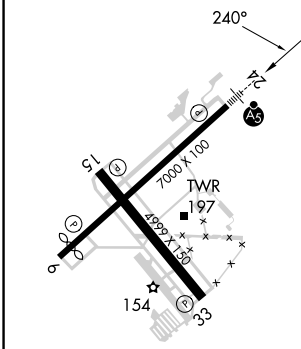
LOC I-PNE 111.1	APP CRS 240°	Rwy Idg TDZE Apt Elev	6102 115 120
---------------------------	------------------------	-----------------------------	-----------------------------------------

ILS or LOC RWY 24
NORtheast PHILADELPHIA (PNE)

		MISSED APPROACH: Climb to 800 then climbing right turn to 3000 direct ARD VOR/DME and hold.			
ATIS 121.15	PHILADELPHIA APP CON 123.8 291.7	NORtheast PHILADELPHIA TOWER * 126.9 (CTAF) 0 278.8	GND CON 121.7	CLNC DEL 127.25	UNICOM 122.95



ELEV 120	D	TDZE 115
----------	----------	----------



CATEGORY	A	B	C	D
S-ILS 24	315-½		200 (200-½)	
S-LOC 24	640-½	525 (600-½)	640-1	525 (600-1)
<input checked="" type="checkbox"/> CIRCLING	700-1 580 (600-1)		720-1½ 600 (600-1½)	780-2 660 (700-2)

NE-4, 22 FEB 2024 to 21 MAR 2024

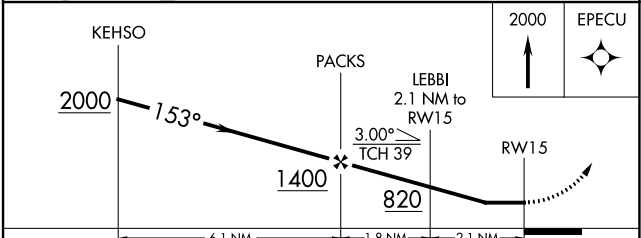
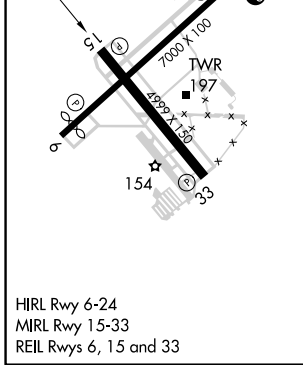
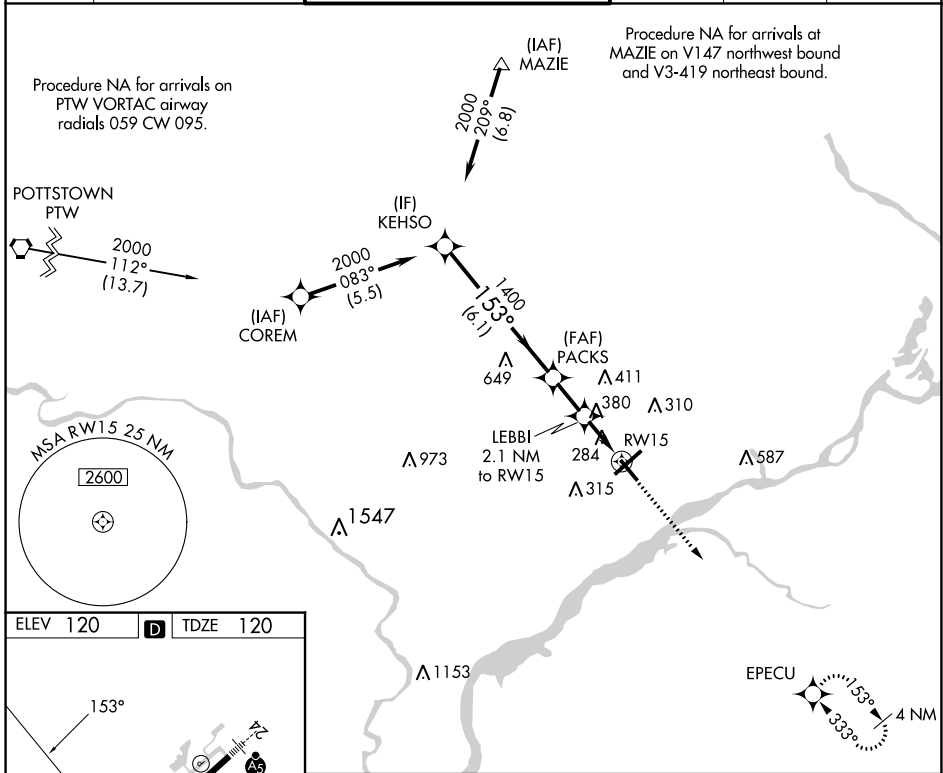
NE-4, 22 FEB 2024 to 21 MAR 2024

APP CRS	Rwy Idg	4999
153°	TDZE	120
	Apt Elev	120

RNAV (GPS) RWY 15

NORtheast PHILADELPHIA (PNE)

<p>⚠ When local altimeter setting not received, use Philadelphia Intl altimeter setting: increase all MDAs 60 feet and LNAV visibility Cat C/D ¼ SM and Circling visibility Cat C/D ¼ SM. DME/DME RNP-0.3 NA.</p>		<p>MISSED APPROACH: Climb to 2000 direct EPECU and hold.</p>			
<p>ATIS 121.15</p>	<p>PHILADELPHIA APP CON 123.8 291.7</p>	<p>NORtheast PHILADELPHIA TOWER * 126.9 (CTAF) 278.8</p>	<p>GND CON 121.7</p>	<p>CLNC DEL 127.25</p>	<p>UNICOM 122.95</p>



CATEGORY	A	B	C	D
LNAV MDA	660-1	540 (600-1)	660-1½	540 (600-1½)
CIRCLING	700-1	580 (600-1)	720-1½ 600 (600-1½)	780-2 660 (700-2)

NE-4, 22 FEB 2024 to 21 MAR 2024

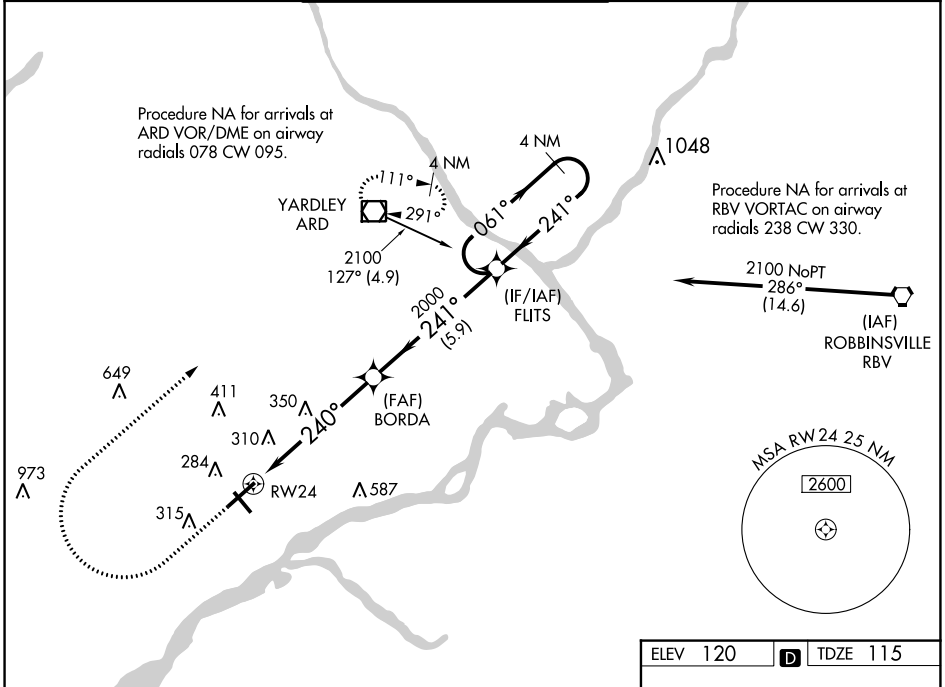
NE-4, 22 FEB 2024 to 21 MAR 2024

WAAS CH 45504 W24A	APP CRS 240°	Rwy Idg TDZE Apt Elev	6102 115 120
----------------------------------------	------------------------	-----------------------------	-----------------------------------------

RNAV (GPS) RWY 24

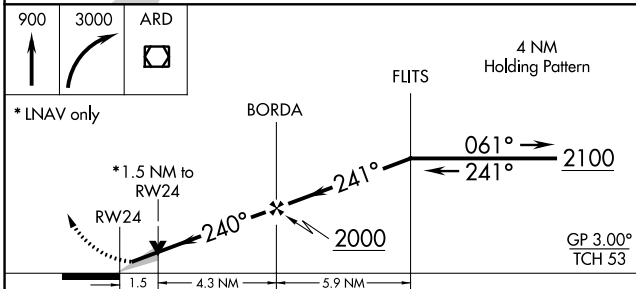
NORtheast PHILADELPHIA (PNE)

<p>For uncompensated Baro-VNAV systems, LNAV/VNAV NA below -12°C (11°F) or above 54°C (130°F). DME/DME RNP-0.3 NA.</p>	<p>MALS R</p>	<p>MISSED APPROACH: Climb to 900 then climbing right turn to 3000 direct ARD VOR/DME and hold.</p>			
		<p>ATIS 121.15</p>	<p>PHILADELPHIA APP CON 123.8 291.7</p>	<p>NORtheast PHILADELPHIA TOWER ★ 126.9 (CTAF) 278.8</p>	<p>GND CON 121.7</p>

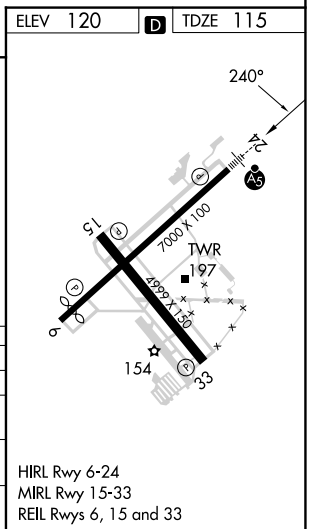


NE-4, 22 FEB 2024 to 21 MAR 2024

NE-4, 22 FEB 2024 to 21 MAR 2024



CATEGORY	A	B	C	D
LPV DA		315-½	200 (200-½)	
LNAV/VNAV DA		560-⅞	445 (500-⅞)	
LNAV MDA	640-½	525 (600-½)	640-1	525 (600-1)
CIRCLING	700-1	580 (600-1)	720-1½ 600 (600-1½)	780-2 660 (700-2)



WAAS CH 69327 W33A	APP CRS 333°	Rwy Idg TDZE Apt Elev	4999 108 120
----------------------------------------	------------------------	-----------------------------	-----------------------------------------

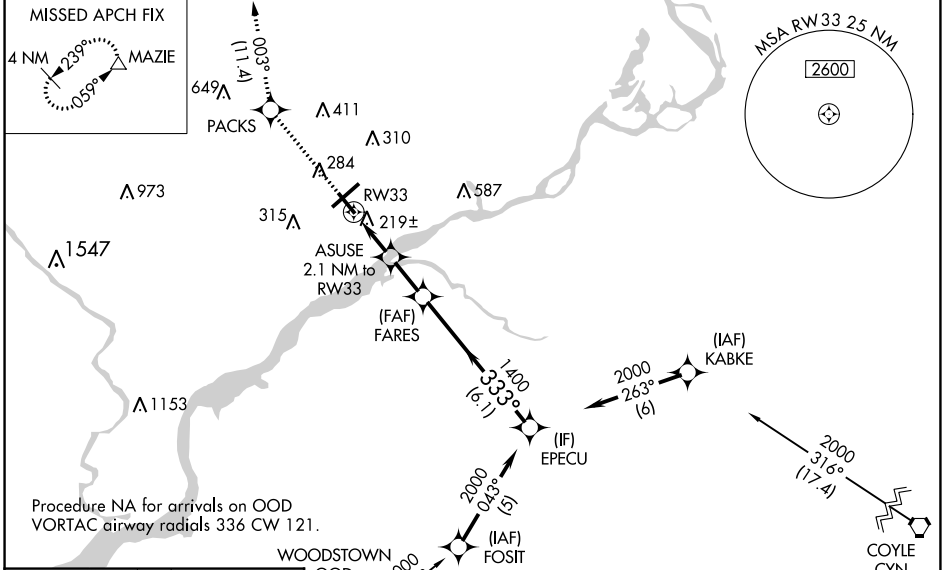
RNAV (GPS) RWY 33

NORtheast PHILADELPHIA (PNE)

⚠ Baro-VNAV NA when using Philadelphia Intl altimeter setting. For uncompensated Baro-VNAV systems, LNAV/VNAV NA below -15°C (5°F) or above 43°C (109°F). When local altimeter setting not received, use Philadelphia Intl altimeter setting: increase LPV DA to 430 feet and LNAV/VNAV DA to 450 feet and all LPV and LNAV/VNAV visibilities ½ SM; increase all MDAs 60 feet and LNAV visibility Cat C/D ¼ SM and Circling visibility Cat C/D ¼ SM. DME/DME RNP-0.3 NA.

MISSED APPROACH:
Climb to 2500 direct
PACKS and on track
003° to MAZIE and hold.

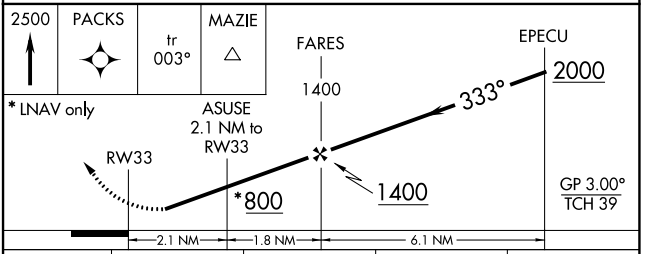
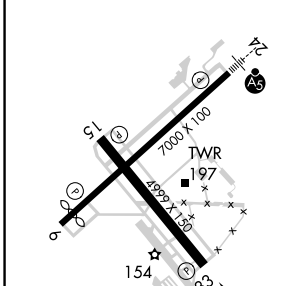
ATIS 121.15	PHILADELPHIA APP CON 123.8 291.7	NORtheast PHILADELPHIA TOWER * 126.9 (CTAF) 0 278.8	GND CON 121.7	CLNC DEL 127.25	UNICOM 122.95
-----------------------	--------------------------------------------	---------------------------------------------------------------	-------------------------	---------------------------	-------------------------



NE-4, 22 FEB 2024 to 21 MAR 2024

NE-4, 22 FEB 2024 to 21 MAR 2024

ELEV 120	D	TDZE 108
----------	----------	----------



CATEGORY	A	B	C	D
LPV DA	380-1 272 (300-1)			
LNAV/VNAV DA	400-1 292 (300-1)			
LNAV MDA	480-1 372 (400-1)			
CIRCLING	700-1	580 (600-1)	720-1½ 600 (600-1½)	780-2 660 (700-2)

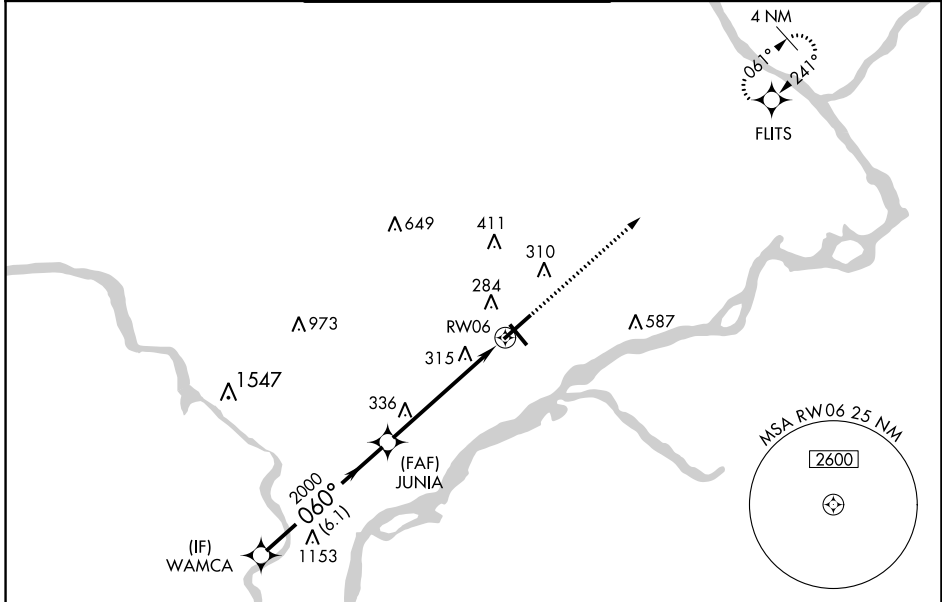
WAAS CH 65622 W06A	APP CRS 060°	Rwy Idg TDZE Apt Elev	6502 116 120
----------------------------------------	------------------------	-----------------------------	-----------------------------------------

RNAV (GPS) RWY 6

NORtheast PHILADELPHIA (PNE)

RNP APCH - GPS.			MISSED APPROACH: Climb to 2900 direct FLITS and hold.		
⚠ Rwy 6 helicopter visibility reduction below 3/4 SM NA. For uncompensated Baro-VNAV systems, LNAV/VNAV NA below -12°C or above 54°C.					

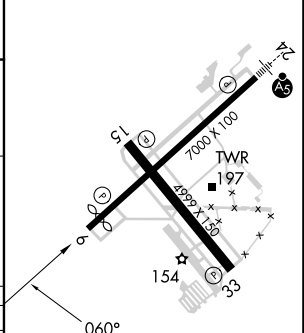
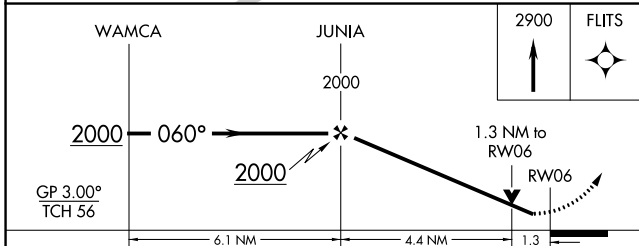
ATIS 121.15	PHILADELPHIA APP CON 123.8 291.7	NORtheast PHILADELPHIA TOWER ★ 126.9 (CTAF) 0 278.8	GND CON 121.7	CLNC DEL 127.25	UNICOM 122.95
-----------------------	--------------------------------------------	---------------------------------------------------------------	-------------------------	---------------------------	-------------------------



NE-4, 22 FEB 2024 to 21 MAR 2024

NE-4, 22 FEB 2024 to 21 MAR 2024

ELEV 120	D TDZE 116
----------	-------------------



CATEGORY	A	B	C	D
LPV DA		366-3/4	250 (300-3/4)	
LNAV/VNAV DA		530-1 1/8	414 (500-1 1/8)	
LNAV MDA	600-1	484 (500-1)	600-1 3/8	484 (500-1 3/8)
C CIRCLING	700-1	580 (600-1)	720-1 1/2	780-2
			600 (600-1 1/2)	660 (700-2)

HIRL Rwy 6-24
MIRL Rwy 15-33
REIL Rwy 6, 15 and 33